

Sustainable Community Strategy for South Bucks District 2009–2026



The South Bucks Partnership draws together the work of all the key public sector, business and voluntary partners in the area to deliver the agreed priorities for the District. It is responsible for directing resources and coordinating the work of partners to deliver improved outcomes for residents.

South Bucks Partnership includes representatives from:

- o All Parish/Town Councils
- o County Council
- o District Council
- o Business and learning sector
- o Voluntary and community sector
- o Faith community
- o Thames Valley Police
- o Bucks Fire and Rescue
- o Bucks Primary Care Trust



Contents:

Foreword	3
South Bucks in 2009	4-7
Our vision for South Bucks in 2026	8-9
Summary of key challenges	10
Delivering the vision for 2026	11
Themes, outcomes and cross-cutting themes	12-13
o Thriving Economy	14-15
o Sustainable Environment	16-17
o Safe Communities	18-19
o Health and Wellbeing	20-21
o Cohesive and Strong Communities	22-23
What each one of us can do to make our area a better place	24
Partnership working in South Bucks	26

Foreword



This Sustainable Community Strategy sets out a positive vision for South Bucks District to 2026. It was commissioned by the South Bucks Partnership in September 2008 and is based on comprehensive consultation with local

stakeholders, residents, the community and the voluntary sector. Its aim is to set a framework for developing a sustainable community in South Bucks where people want to live and work now and in the future. We have considered residents' views as well as those of business and community representatives, local parish councils and other interested parties on what makes South Bucks a good place to live and how to retain a high quality of life. These views have been included in this strategy, which

we believe is both deliverable and achievable to shape the District into what residents want it to be by 2026. In creating this strategy, we have worked closely with partners who will be responsible for delivery, so that all stakeholders have agreed and are committed to achieving the vision.

By the year 2026, many things will have changed and there will have been many opportunities to improve the quality of life for local people. To sustain the very high quality of life for people living and working in the District we will need to ensure economic competitiveness, environmental sustainability and a safe, healthy and cohesive community. The population of South Bucks will change significantly between now and 2026. This will have an impact for the services that public, private and voluntary sector organisations provide, as the number of service users and their needs will change. Requirements for services such as healthcare, housing and leisure

services are likely to change during this period, particularly for our older residents.

The previous Community Strategy, *The Shape of Things to Come – South Bucks 2006 – 2016*, has been replaced by this new Sustainable Community Strategy. This is the over-arching plan for South Bucks and sets out the key priorities for the area. We will consult with you on a regular basis to ensure that we continue to work towards what you, the residents, want South Bucks to be by 2026. This strategy is part of a family of community strategies at County and District level which clearly sets out a joint, collaborative approach to community planning across Buckinghamshire.

Adrian Busby,
Chairman of South Bucks Partnership

South Bucks in 2009

South Bucks is an attractive and popular District in which to live and work. It is relatively small at 141 square kilometres, and lies within the Metropolitan Green Belt area, with 87 per cent of the land designated as green belt. There are many small towns and villages, the largest being Burnham, Beaconsfield and Gerrards Cross. These three towns have the best infrastructure and facilities. Most of the towns and villages have historic roots which are preserved through the use of conservation areas and listed buildings. The larger towns of Maidenhead, Slough, High Wycombe and London (Hillingdon) border the District. These centres provide shopping facilities and services not available within the District, and some jobs for residents. In return, South Bucks provides the open spaces which help meet the recreational needs of these larger centres.

A large majority of 84 per cent of our residents believe that South Bucks is a good place to live and put a high priority on conserving the attractive qualities of the District, including its natural and cultural heritage and the character of towns and villages. South Bucks residents said that the most important things that make somewhere good to live are: a good quality environment; low crime levels; good health services. Residents said the following needed improving: road and pavement repairs; traffic congestion; activities for teenagers.



Thriving Economy

We have a strong economy with just under 5,000 businesses. Many of these are small companies employing fewer than 25 people. South Bucks is home to a number of large employers including the nationally important Pinewood Studios, Martin Baker Aircraft (aircraft ejector seat manufacturers), Wyeth Laboratories, Servier and Robert Bosch. There are about 35,000 jobs in South Bucks across a number of different sectors including: film and media or related sectors; pharmaceuticals; the professions including accountants and lawyers; hotels and restaurants. With no major town in the District, business locations are scattered.

Buckinghamshire prides itself on being the entrepreneurial heart of Britain. In South Bucks there is a high level of new business start-ups. It has one of the highest number of new VAT registrations and the highest outside Greater London. Eighteen per cent of the working age population is self-employed.

Residents are highly skilled with over 35 per cent holding a degree level qualification. Many residents have higher paid occupations as managers or professionals and earnings are significantly higher than average. However, over ten per cent of residents have no qualifications. Unemployment is low and is currently half the national average.

Our District competes with surrounding larger towns for both employees and employers and this has resulted in complex commuting patterns with 19,000 people commuting in and out of the District. Enabling a better match between local jobs and the resident workforce and encouraging more residents to work locally, will help to reduce traffic congestion and provide wider environmental benefits.

South Bucks' location and popularity means there are significant development pressures on the area. The limited availability of development land has led to house prices being double the national average and

increasingly beyond the means of local people. Demand for affordable housing is high, and recent surveys show that demand is more than can be delivered.

Sustainable Environment

A 2007 Halifax survey found that South Bucks has the second highest quality of life of any local authority in Britain. Between 2006 and 2026, 1880 new homes must be built. The Local Development Framework will set out the best way to achieve this whilst protecting the green belt, our open green spaces and the character of the local area which residents value so highly. The larger towns have the widest range of facilities and jobs, as well as more redevelopment opportunities. It is important to ensure that the needs of these towns are met in a way which also safeguards their character.

Our District is home to areas of outstanding natural beauty, including part of the Chilterns, Cliveden, the River Thames, Colne Valley Park

South Bucks in 2009 continued

and Burnham Beeches which is designated a European Special Area of Conservation. It is important to protect the distinctiveness of these landscapes including our wildlife corridors (areas of land that connect wildlife populations across, for example, roads or other manmade obstacles). The District has many registered parks and gardens, nature reserves, sites of special scientific interest, conservation areas and over 700 listed buildings.

Our carbon footprint is high, with large homes, high levels of car ownership and road congestion at busy times. The Energy Savings Trust Green Barometer Report III 2007 found that South Bucks had the highest carbon footprint per person in the whole of the UK. Helping and encouraging our residents to minimise their impact on the environment is particularly important for South Bucks. There is strong support for recycling and environmental initiatives. However, we need to reduce further the amount of waste sent to landfill. Air quality is monitored via three

Air Quality Management Areas. Parts of the District are prone to flooding, particularly around the River Thames and River Colne.

It is important to focus new development in sustainable locations to reduce reliance on cars. It is equally important to reduce the environmental impact of other types of transportation, particularly freight movement. Climate change is already affecting the weather and the likely impact on our District will include greater flood risk as well as periods of drought.

Safe Communities

South Bucks is a safe place to live, but the fear of crime is a very real issue for many residents. The 2008 Place Survey found that a low level of crime is important to residents in making somewhere a good place to live and one of the top five issues most in need of improvement. However, over the past five years the number of residents who think levels of crime are too high has been steadily reducing. Burglaries and

theft from vehicles are comparatively high and are often drug related crimes that spill over from nearby towns. Our approach to crime will increasingly depend on developing wider partnerships and co-operation across police forces.

South Bucks works with each of the eight Neighbourhood Action Groups in the area to identify local priorities and solve issues in partnership with local communities, businesses and partner agencies. The most common priority from the Neighbourhood Action Groups is antisocial behaviour including parking and speeding.

Health and Wellbeing

The District's population is healthy by most measures and life expectancy is significantly above the national average. However, good health is not shared equally across the population. Life expectancy in South Bucks in the most deprived 20 per cent of the population is 11 years fewer than the most

affluent 20 per cent and there is a huge burden of preventable disease. Rates of deaths from heart disease, strokes, cancer and hospital stays caused by alcohol are lower than average. However, there are nearly 100 smoking-related deaths a year, one in six adults is obese, one in seven adults binge drinks and there are 1,200 children living in low income families.

It is essential that all residents are able to access the services and support they need. This can be difficult in rural areas, particularly as many of the services are placed outside the District and public transport links are poor. Consistent feedback from vulnerable groups emphasises access to services and support being a real issue. Addressing health and deprivation requires a multi agency approach to promote healthy lifestyles generally and to target areas of deprivation and vulnerable groups. We know that the proportion of older people is increasing and we need to provide support and services to enable people to live independently as long as they can.

Cohesive and Strong Communities

Community Cohesion lies at the heart of what makes a safe and strong community. It includes tackling problems such as access to employment, education and housing and the lack of daily interaction and communication with people from different backgrounds. Our communities here in South Bucks are diverse and we need to make sure that all their needs are considered including the elderly, those without transport, teenagers, Gypsies and Travellers, those who live in rural areas and those with learning disabilities and mental health problems. A high number, 82 per cent of residents, agree that South Bucks is a place where people from different backgrounds get on well together.

A socially inclusive community is one which has good access to services, good social networks, decent housing, and adequate information and support. There is a strong voluntary and community sector within Buckinghamshire and it is important that

all generations have opportunities to be involved in their local communities, through engagement and volunteering. The area faces challenges in maintaining cohesive communities as the District becomes more diverse and demographics change.



Our vision for South Bucks in 2026

South Bucks in 2026 will be an attractive District in which to live and work with high living standards. It will provide an environment which meets the needs of its local communities in a sustainable manner, balancing environmental, social and economic needs. The population will be roughly the same as in 2008 but there will be more older people with a quarter of residents aged over 65 and fewer young people. The communities will be more diverse with more people from black and minority ethnic communities including a higher percentage of young people from these communities.

The green belt will continue to be conserved and accessible green space such as Burnham Beeches, the River Thames and the Chilterns will be a source of pride to residents, inspiring them to live low carbon lives. New, high quality development and conservation will make a positive contribution to enhancing the character of the towns and villages with

rural areas safeguarded enabling them to flourish. Thriving towns and village centres will provide a range of retail and community facilities that meet local needs. New housing will be built in the most sustainable locations, such as Beaconsfield and Gerrard's Cross and will meet the demand for smaller family units and there will be more affordable homes, including social rented housing. Infrastructure will be provided to address local gaps and improved management of the transport networks will ease congestion, roads will be safer and public transport will be well used.

A prosperous and diverse economy will provide employment which many residents will choose to take

advantage of, living and working locally and so reducing commuting. There will be an entrepreneurial spirit in the business world, with a steady stream of new small and medium sized businesses providing job opportunities that match the skills of the available workforce. With fewer residents of working age, the workforce will be balanced by a change in working patterns, with more people working for longer and an increase in flexible and part-time working and more home working.

Residents will continue to live long and healthy lives. A concentrated effort by both local agencies and individuals has reduced the gap between the most and least disadvantaged. Residents take responsibility for leading healthy lifestyles



and take advantage of the green space and leisure opportunities the District has to offer. Local people are involved in their communities, actively shaping local decisions, volunteering and supporting the elderly and vulnerable to live full and independent lives. Isolation in older people and those whose circumstances make them vulnerable is minimised.

The police are an active part of the community and residents enjoy a safe environment with lower levels of crime and anti-social behaviour and a reduced fear of crime. There will be improved support and activities for young people, enabling them to contribute to community life. Public, private and voluntary sectors will work closely together to provide a range of accessible services which meet the needs of the local communities, particularly the elderly and vulnerable members of society.



Summary of Vision

South Bucks to be a place with:

- o A prosperous and diverse economy, with more people choosing to live and work locally;
- o Green space, thriving and attractive towns and villages, where our heritage is protected and more affordable homes are available to help meet community needs;
- o A sustainable environment where people take pride in their community and live low carbon lives;
- o Lower levels of crime and anti-social behaviour, where the police are an active part of the community and people are knowledgeable about how to prevent crime;
- o Good health which is enjoyed by all including those in deprived groups and where people take responsibility for their own well-being;
- o Active communities involved in shaping decisions locally and who support the elderly and vulnerable to live full and independent lives.

Summary of key challenges

There are a number of challenges to address if partners are to collectively deliver the vision set out in this strategy. These are:

- Conserving and enhancing the green space and natural environment of the District
- Meeting the needs of a demographically changing and ageing population
- Sustainable delivery of at least 1,880 new homes between 2006 and 2026, of the right type, and with the necessary supporting infrastructure
- Protecting and enhancing the quality and character of our towns and villages while enabling further development
- Where and how to provide affordable housing, including for older people and vulnerable people
- Supporting the local economy to continue to thrive and provide local jobs for local people
- Encouraging the development of workforce skills for tomorrow's economy
- Increasing the feeling of belonging to the community
- Improving support and activities for teenagers and young people
- Addressing disadvantage and health inequality in parts of the District
- Addressing the causes of crime and the related fear of crime
- Reducing the District's impact on the environment and addressing the challenges and opportunities posed by climate change
- Improving road safety and the adverse impacts of traffic.



Delivering the Vision for 2026

This Sustainable Community Strategy is the over-arching long-term plan for South Bucks. It is not a detailed action plan, but a framework to help partner organisations to take collective responsibility, work together and make the best use of resources to deliver the outcomes set out here.

Delivering the vision to 2026 will require determined action by a range of public, private and voluntary sector bodies working in partnership at the neighbourhood, District and County level.

We will review this strategy every year to make sure that it continues to reflect local people's views and addresses new challenges as they emerge. As the area's priorities develop and change, the action plans of the partnership and individual partners will change to reflect this.

These action plans are set out in a variety of documents including: the Local Development Framework; Community Cohesion and Inequalities Strategy; Housing and Homelessness Strategies; the Community Safety Strategy; the Healthy Communities Strategy. In addition, a number of specific projects and activities will target geographic areas and/or groups. These projects and activities will be monitored to ensure they are making a positive difference to people's lives.

The outcomes are widely supported by National Indicators and local measures, including those already agreed in the Buckinghamshire Local Area Agreement. This will help us compare our performance against other areas in the country. For more information about the delivery of the vision visit our website at www.southbucks.gov.uk

Links to spatial planning

Spatial planning goes beyond traditional planning and takes a fresh approach to delivering sustainable development that reflects the views of local people and the distinctive character of individual locations. The ambitions in this strategy cannot be achieved without a direct link to the spatial plans for the area. This is done through Local Development Frameworks at County and District level. Local Development Frameworks are a new kind of planning framework and set out planning policy for each District and for the County overall to 2026. They are closely aligned to the family of Sustainable Community Strategies and these will work together to achieve our vision.

Buckinghamshire Local Area Agreement

The Buckinghamshire Local Area Agreement is central to the delivery of the family of Sustainable Community Strategies. The Local Area Agreement is led and co-ordinated by the Bucks Strategic Partnership. It is a contract between partners in Buckinghamshire and the

government to deliver measurable improvements to the quality of life and services for residents over a three year period. The agreement consists of an agreed framework of improvement targets which reflect the priorities in the Sustainable Community Strategies.

Themes, Outcomes and Cross-cutting Themes:

This Sustainable Community Strategy has five broad themes. These reflect the issues that you have told us matter most:

Thriving Economy

Sustainable Environment

Safe Communities

Health and Wellbeing

Cohesive and Strong Communities

For each theme we have identified key outcomes that will improve the quality of life in our District. Outcomes that are shown in **bold type** are shared aspirations across Buckinghamshire and will be found in the Sustainable Community Strategy for each District area and the County – making a ‘family’ of plans. The outcomes in normal text show where the South Bucks Partnership needs to focus locally. Each of our areas is different and the District strategies reflect this.

The five themes link and overlap. Therefore, taking action in relation to one theme will often have a positive effect on another theme. For example, tackling crime and anti-social behaviour (Safer Communities) makes the area safer and more attractive for business to invest in (Thriving Economy). This is illustrated through the ‘wheel’ showing links between the themes.



Cross-Cutting Themes

There are also three cross-cutting themes which are central to the Sustainable Community Strategy. These are:

- Responding to demographic change
- Addressing inequalities
- Personal responsibility.

To meet the vision for 2026, these cross-cutting themes must be fully considered when developing action plans.

Responding to demographic change

The population of Buckinghamshire will increase due to the substantial growth in the north of the County and, at the same time, the demographics of the county will also alter significantly. The number of people in South Bucks’ population will remain roughly the same but the demographic make-up of our population will change considerably by 2026. Compared to the national average, our population is currently older with more residents over 40 and fewer in their 20s and 30s. By 2026, there is expected to be a 39 per cent increase in those over 65, a 38 per

cent increase in those over 80 and an 18 per cent decrease in those under 20. To achieve the outcomes set out in this strategy, we must recognise and plan for the needs of our changing population.

Communities are expected to become more diverse with a larger black and minority ethnic community. This is currently estimated to be 11.76 per cent and has risen steadily from 6.63 per cent in 2001 and 3.30 per cent in 1991. The black and minority ethnic community is a much younger community and in 2001 made up 10 per cent of residents under 20. There is some evidence that this community suffers from a slightly higher risk of housing overcrowding. In South Bucks there is no evidence to show they suffer a higher degree of income deprivation and many live in our more affluent communities.

Addressing inequalities

Tackling disadvantage is crucial if we are to achieve the outcomes set out in the strategy. Our approach must include targeted actions and ways of working which best address the

inequalities experienced by different groups and communities.

Hidden within the general affluence of South Bucks there are communities who face disadvantage and this can be overlooked. Over half the areas within the District fall within the least deprived 25 per cent nationally and some within the least deprived 1 per cent, however two areas within Burnham have above average deprivation. These areas have higher unemployment and along with two areas in Iver have more people with low income levels including some older residents. Many of our older residents are affluent, but those who live in poverty are more likely to experience poorer health. They are less able to spend money heating their homes and therefore have an increased risk of developing heart attacks, strokes and chest infections. There are 1,200 children living in low income families many of these live in Burnham, Wexham and Iver. This can have long-term implications for health, education, employment opportunities and the chances of being involved in crime.

Personal responsibility

This is a strategy for the community and cannot be effectively delivered without the support and active involvement of residents. Important examples include improved health through active lifestyles, and creating a sustainable environment through reduced waste and carbon emissions. Please look at the section “What each one of us can do to make our area a better place” to see how you can help.



Thriving Economy

*“Lifelong
enterprise”*



This theme addresses how to support the local economy including physical planning for the future, such as infrastructure, affordable housing, employment land (land used by business and industry for offices, warehousing and technology parks etc) and town centres. The planning aspects will be set out in the Local Development Framework and the economic aspects in the Bucks Economic Development Strategy.

A key challenge for a thriving economy is to ensure a diverse economy with employment opportunities that meet the skills and needs of local workers. The economy is currently made up of a large number of small and medium sized businesses and they need the support and infrastructure to help them flourish and survive recessions. The Olympics 2012 will provide opportunities for local people and businesses which we should aim to sustain into the long term.

Changing demographics mean we will have fewer young people in the workforce and businesses will need to become more flexible to adapt to changing working patterns and the

needs of an older workforce. It is important to encourage more people to live and work locally and create employment opportunities to match the skills of the local people and thus reduce the need to commute. We must also address the need of those on lower pay which is likely to increase demand for affordable housing – a particular challenge for South Bucks due to the high property prices. Ten per cent of our working age residents have no qualifications and this could lead to deprivation unless their training needs are addressed. Those in education and employment need to develop the skills that employers will require in the future.

What you have told us:

- Improve the identity of the District as a place to do business with more support for smaller businesses and entrepreneurs including wireless connectivity, internet cafes, drop-in centres and small business printing and admin support stations
- Ensure new developments are sensitive to the local area and include affordable homes for local people, green spaces, quiet spaces and supportive infrastructure
- Sustain the rural economy by keeping local shops and services to avoid the creation of dormitory villages





"..the entrepreneurial heart of Britain"

- Reduce commuting by reducing the need to travel, improving public transport and encouraging businesses to introduce flexible working patterns to reduce peak flow traffic
- Improve links between businesses and the local communities and encourage all employers to be greener and more socially responsible
- Make schools more responsive to the needs of all younger people
- Capitalise on the opportunities of the 2012 Olympics before, during and afterwards
- Support existing media and creative industries such as Pinewood Studios, the centre of a major creative industries cluster.

We aim to:

Build business, enterprise and innovation and promote global competitiveness

- Ensure local businesses and families know where to find support during times of growth and in difficult times
- Support a dynamic economy and encourage enterprise
- Advise local businesses on environmental, safety and health issues

Develop skills and employment for the future

- Encourage greater understanding between educational institutions and employers on the skills required both now and in the future
- Raise the qualifications and skills levels within education and employment including the basic literacy and numeracy skills of those entering the workforce for the first time

Increase affordable housing

- Support the delivery of more affordable homes for local people entering the housing market, families and our ageing population

Support strategic infrastructure requirements

- Retain employment land
- Encourage appropriate development to support the community
- Carefully plan infrastructure to meet community needs while being sensitive to the environment
- Seek contributions from developers towards new infrastructure
- Maintain essential services in our high streets and town and village centres

Promote investment in South Bucks

- Enable local people and businesses to maximise opportunities generated by the Olympics 2012
- Attract appropriate inward investment and support new business start-ups

Sustainable Environment



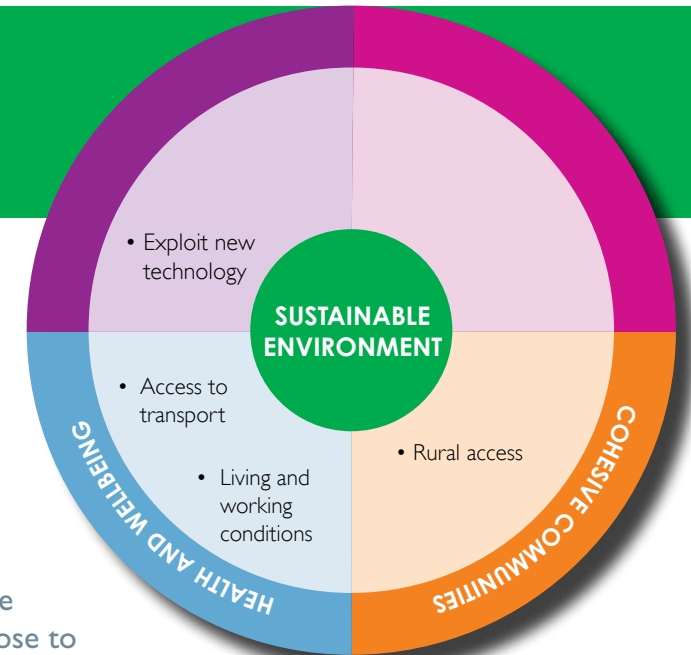
This theme addresses sustainable development alongside the conservation and enhancement of open spaces. It includes: tackling climate change; flood risk; biodiversity; traffic congestion; pollution; energy and waste management. The Local Development Framework will tackle this theme from a planning perspective.

A key challenge for a sustainable environment is to maintain the high quality landscapes which cover much of our area and make a large contribution to its character and the good quality of life enjoyed by residents. Inappropriate development could adversely affect both the enjoyment of these areas and the species of plants, animals and systems supported by them.

Because it is so important to protect our green belt, there is limited land available for employment or housing and much development will be achieved through redevelopment and refurbishment of existing brown-field sites. New development must meet local needs in a way that makes a positive contribution to the local

area's character and sense of place. It will need to be in the most sustainable locations, close to local services and employment. This will help to reduce the need to travel, enable more environmentally friendly ways to travel and reduce carbon emissions.

South Bucks is one of the UK's highest energy consumers. It is particularly important for us to ensure that new and existing development is energy efficient and to help and encourage residents to be more energy efficient and minimise their impact on the environment. There is strong support for recycling but we need to further reduce domestic and commercial waste, maintain a clean environment



and reduce fly-tipping. The risk of flooding tends to be limited to areas close to the Rivers Thames and Colne and their tributaries, but include Burnham, one of the largest settlements, as well as Taplow, Dorney and New Denham.

“Protecting our heritage, protecting our future”

What you have told us:

- Retain the character and heritage of local towns
- Safeguard the green belt and areas of outstanding natural beauty while developing opportunities for leisure and employment
- Improve community pride with the local area
- Develop more opportunities for conservation and biodiversity
- Convince individuals to reduce their environmental impact and carbon footprint
- Reduce waste to landfill and further increase recycling opportunities, for individuals and businesses
- Maintain a clean environment with low levels of pollution and reduce the environmental impact of transport
- Improve road and pavement repairs and reduce traffic congestion.

We aim to::

Tackle climate change

- Reduce carbon emissions in the District and adapt to the impacts of climate change
- Promote energy saving including the use of alternative fuels and forms of transport
- Reduce our consumption of resources through purchasing decisions, improved monitoring and reduced energy use

Enhance and protect local environment

- Keep public places clean and tidy
- Minimise air pollution, including enabling home working through improved technology
- Safeguard our green belt and avoid inappropriate development

- Shape development in the built environment to conserve and enhance the character of the local area while meeting changing local needs
- Protect and enhance the historic environment, natural environment and open spaces, promoting biodiversity
- Manage flood risk

Reduce waste, reuse resources and increase recycling and energy recovery

- Minimise waste by reducing, reusing and recycling as much as possible

Efficiently manage and maintain the transport network

- Encourage more sustainable forms of transport and increase travel choices to help reduce congestion
- Reduce the environmental impact of transport, particularly freight movement

Safe Communities



This theme addresses crime and safety issues, including tackling the harms caused by drugs and alcohol. Priorities to make South Bucks safer are identified by the South Bucks Community Safety Partnership and outlined in the South Bucks Community Safety Strategy.

A key challenge for a safe communities is to reduce the level of crime. Residents tell us that this is one of the most important factors in making somewhere a good place to live and one of the issues most in need of improving. Recently, however, the number of residents who think it needs improving has reduced significantly. Burglaries and theft from vehicles are comparatively high. The challenge is to tackle the root causes of crime. Most offenders travel in from nearby areas and 55 per cent of offenders are linked to drugs. Close partnership working with neighbouring authorities, especially Slough, is important to offer support to offenders and reduce re-offending.

Addressing anti-social behaviour, including speeding and parking, is a top priority for all the Neighbourhood Action Groups. Complaints include noise, fly-tipping, graffiti, abandoned vehicles and criminal damage. The challenge is to establish high local standards to tackle anti-social behaviour including in schools. We also need more youth facilities and community projects that develop closer links between residents of different age groups. To reduce the fear of crime, we need to encourage more positive reporting on crime issues in the local media, particularly in relation to young people. More people than average are killed or seriously injured on our roads each year and residents say road safety must be improved.

What you have told us:

- Continue to reduce acquisitive crime and keep “home grown” offenders to a minimum
- Develop integrated offender management with neighbouring areas
- Focus on preventative activities including understanding why people resort to crime, tackling inequalities, improving the way people look after their property and possessions and developing supportive neighbours, particularly for the elderly and vulnerable
- Target specific areas of anti-social behaviour. Provide more activities for younger people



“Being safe, feeling safe”

- Continue to closely engage with communities and strengthen local Neighbourhood Action Groups and Neighbourhood Watch
- Provide a stronger police and local community support officer presence with better understanding of local communities
- Reduce the fear of crime and encourage the media to report a positive view of young people
- Improve road safety and reduce the number of serious and fatal casualties.

We aim to:

Reduce crime, including anti-social behaviour

- Reduce the impact of anti-social behaviour in our community
- Reduce serious acquisitive crime
- Continue to tackle the root causes of crime including working across borders to reduce offenders travelling into South Bucks from other areas
- Increase police resources to match provision in the rest of Buckinghamshire

Reduce fear of crime

- Help local people to feel safe by encouraging responsible and positive reporting of crime in the local media
- Support victims of crime
- In partnership with local residents and businesses, clean up the environmental impacts of crime, such as graffiti
- Empower local people to reduce their risk of becoming a victim and encourage community involvement, for example, via Neighbourhood Watch / Neighbourhood Action Groups

- Increase public confidence by ensuring residents know what is being done to reduce crime and disorder

Reduce the harms caused by alcohol and drugs

Improve the safety of local people

- Improve road safety
- Ensure the safety of young people and vulnerable adults
- Develop a Home Safety Check initiative in the District
- Reduce the risk of death or injury from domestic fires and promote fire safety

Safe development

- Design developments to minimise opportunities for crime

Sustain local resilience to violent extremism

- Build strong community links

Health and Wellbeing



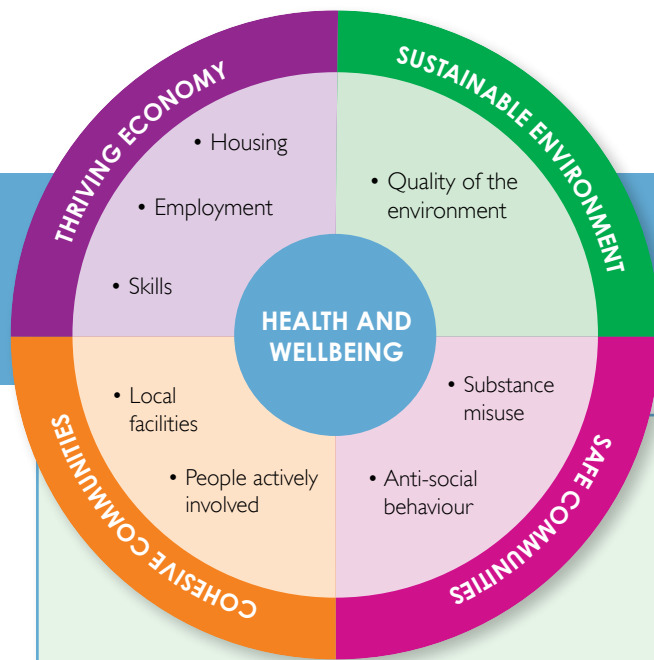
This theme addresses the general health of the community, in particular: health inequalities; healthy lifestyles including leisure and recreational activities; social care; transport and accommodation needs. The Primary Care Trust Strategy and Bucks Healthy Community Strategy help deliver this theme.

A key challenge for health and wellbeing in South Bucks is to ensure that the benefits of good health are shared equally. We must address health inequalities to improve people's health and reduce the gap in life-expectancy between our most and least disadvantaged communities. It is essential all residents are able to access the support and healthcare services they need. This includes community transport for those who are less mobile or without access to a car. A key question for the future is how best to care for vulnerable people in our society and how best to help older residents maintain their independence and live full and active lives. There are no hospitals

in the District, and many GP surgeries are small and so unable to take on the wider role of a health centre. Gerrards Cross has no GP surgeries; the closest is in Chalfont St Peter in the Chiltern District. We must improve health information with a focus on self-help and prevention and educate residents to live healthier lives. Our aim is to reduce obesity particularly among the young, reduce binge drinking, improve diets and encourage active lifestyles. The limited amount of open space to the east and centre of the area may affect access to recreational activities and some green spaces are inaccessible or of poor quality.

What you have told us:

- Maintain the good health of the District and reduce health inequalities
- Keep local health facilities that are accessible and available to everyone, including Burnham Health Centre
- Focus on health promotion, self-help, prevention and early intervention and look for different ways to get the message across
- Improve access to mental health help
- Reduce isolation for the elderly and vulnerable by increasing warden supported accommodation, expanding clubs and day centres, voluntary home visits and enhanced volunteer transport schemes
- Provide more accessible health facilities for older people and better dementia services
- Make “Every Child Matters” (the Government programme to improve outcomes for children and young people) really work and promote healthy lifestyles to young people including reducing obesity through better nutritional awareness, sensible drinking, active lifestyles and sexual health
- Provide appropriate infrastructure (housing, employment etc) to enable vulnerable people, including those who have issues relating to substance abuse, to take their place in our society.



“Healthier, happier and longer lives”

We aim to:

Promote healthy lifestyles

- Improve mental health
- Reduce obesity, particularly in young people
- Protect and enhance areas of recreational open space
- Increase participation in cultural and sporting activities through businesses, schools, leisure and community organisations
- Maintain health and safety standards in workplaces and food outlets
- Reduce the number of smokers and enforce the law that bans smoking in public buildings
- Reduce the number of high risk and increasing risk drinkers

Reduce health inequalities

- Reduce health inequalities and ensure comprehensive information on support and services is available to everyone

Improve quality of life for an ageing population

- Help older people stay in their homes for longer
- Improve the health of the elderly in sheltered accommodation through exercise
- Secure the provision of more specialist accommodation for the elderly
- Improve affordable warmth

Improve quality of life for children and young people

- Secure the provision of more positive activities for young people
- Close the gap between the most advantaged and disadvantaged young people

Reduce homelessness

- Work more closely with relevant agencies to improve help for those at risk of homelessness
- Find the right accommodation for those with special needs

Provide well connected communities

- Improve accessibility of services and support for all residents
- Target services tailored to meet the needs of individuals and look for opportunities to bring services together and reduce social isolation particularly in rural areas
- Improve rural transport and access to services
- Improve access to recreational opportunities, particularly for hard to reach groups

Cohesive and Strong Communities



This theme addresses the “glue” which holds the community together – the sense of belonging, community involvement and active citizenship. This theme is led by the Cohesion and Inequalities Forum which has developed the Community Cohesion and Inequalities Strategy.

A key challenge for cohesive communities in South Bucks is to develop a sense of community so that everyone feels part of their community. A strong community spirit enhances the quality of life in an area, giving the opportunity for all ages and backgrounds to be involved in their community through engagement and volunteering. The communities in South Bucks will change considerably by 2026. We expect an older population with a 39 per cent increase in the over 65s, fewer young people, and more diverse communities with a larger black and minority ethnic community and more migrant workers. It is important that we plan for these

changes to promote inclusion for all and avoid tensions developing within our communities.

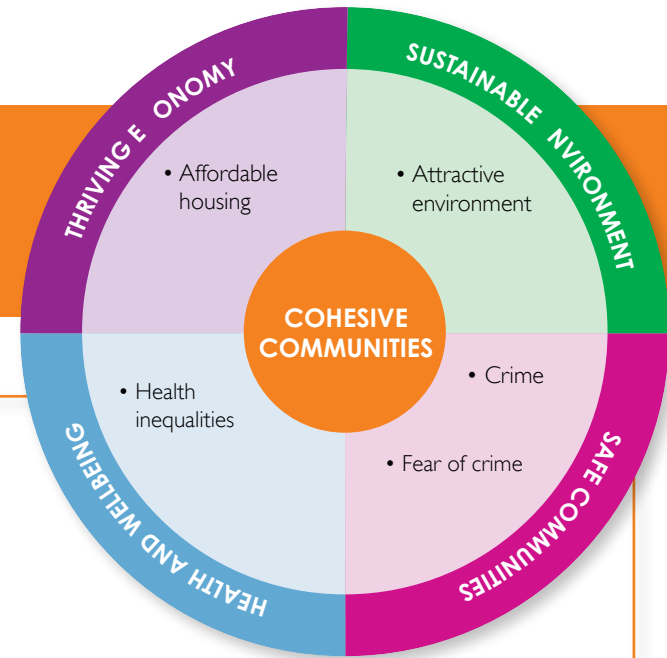
Another challenge will be to work closely with all sections of the community, to find out what their different needs are and to support vulnerable people and those with special needs to live full and inclusive lives. Keeping shops and community services in towns and villages such as post offices, halls and libraries will provide a focus for community life and essential services, particularly for those with limited mobility.

What you have told us:

- Provide good access to information at a local level, including new resident packs, publicity and local information
- Provide a pleasant environment with green and open spaces helps people to identify with their surroundings and feel proud of where they live
- Encourage active citizenship so all members of communities feel supported at each stage of their lives including enabling older people to live full lives within their communities
- Encourage a thriving community and voluntary sector and help support community events by helping with Criminal Records Bureau checks and risk assessments
- Provide activities for people who can feel isolated, for example, parents at home with young children, carers and older people



“Strong, confident and active communities”



- Promote friendly, multi-cultural mixing and reduce concerns and misconceptions about immigration
- Show that we listen to local views and encourage everyone to get involved in their community and provide feedback
- Fully exploit the 2012 Olympics to create a sense of pride for the area
- Improve the public and voluntary transport that is crucial to enable people to get involved.

We aim to:

Sustain and grow a thriving voluntary and community sector

Support a thriving community and voluntary sector to enable active and cohesive communities through:

- Increasing community participation and volunteering
- Encourage employees of local businesses to volunteer

Increase confidence of communities

- Recognise and support good community leaders (including elected representatives)
- Encourage people, including the young, to have a say in decision-making and find local solutions to community issues

Help all communities get on well together

- Improve community spirit (for example increased contact and understanding between people from different parts of the community)

- Promote and support community and local events, and community information with focal points such as post offices, village halls, libraries

Reduce levels of disadvantage

- Reduce social isolation particularly for older people and in rural areas
- Whole life-cycle support to enable people to be supported at different stages of their lives
- Tackle inequalities through better engagement with vulnerable and ethnic groups, including disabled people
- Ensure information about all services (statutory, community and voluntary) is well publicised and residents know what support is available

What each one of us can do to make South Bucks a better place

We all have a part to play in making South Bucks and Buckinghamshire a place we identify with and feel proud of.

We recognise that people have rights and responsibilities. Our Partnerships will respect and promote these rights, while at the same time encouraging personal responsibility. It is essential for individuals and communities to take positive action if our shared vision is to become a reality, as many improvements will require a combination of partnership work and individual lifestyle changes.

All the Buckinghamshire Local Strategic Partnerships are actively encouraging everyone in their areas to do something to help themselves and their local community, as this will directly help to achieve the outcomes in this Sustainable Community Strategy.

The following examples of individual actions would, if carried out by many people, make a significant contribution. Could you do at least one new activity from the list to help?

- Take simple crime and fire prevention measures by locking doors and windows, fitting alarms, removing valuables from cars and security marking property
- Join Neighbourhood Watch or other local watch schemes
- Fit smoke alarms and regularly check the batteries to make sure the alarms are working
- Adopt a healthy lifestyle by eating healthily, reducing smoking and drinking sensibly to improve physical and mental wellbeing
- Try to get at least half an hour of moderate exercise five times a week
- Recycle as much household waste as possible and try to save energy around your home

- Look out for neighbours, especially if they are elderly or frail
- Join a local group or charity as a volunteer (ask a local volunteer centre for information)
- Vote in elections and take part in local democracy
- Support local shops, producers and businesses
- Learn a new skill for work or pleasure
- Walk, cycle or take public transport wherever possible
- Help to keep your community clean and tidy.

This list is not comprehensive and we encourage individuals and communities to add their own ideas to suit their particular needs.



Partnership working in South Bucks

For more information on the South Bucks Partnership:

Please see the South Bucks District Council website, www.southbucks.gov.uk and from the menu on the left hand side of the page click on 'council and democracy', and then 'partnerships'. Here you will find regular updates on our progress and be able to track the difference we are making to the lives of all who live and work here.

For regular news on issues affecting the County-level Bucks Strategic Partnership, visit their website www.bucksisp.org.uk or subscribe to their electronic magazine, 'Buckinghamshire Together' on www.buckinghamshiretogether.org.uk

The South Bucks Partnership includes representatives from:

- All Parish/Town Councils
- County Council
- District Council
- Business and learning sector
- Voluntary and community sector
- Faith community
- Thames Valley Police
- Bucks Fire and Rescue
- Bucks Primary Care Trust

If you would like this document in another format, larger print, or if you require the services of an interpreter, please contact us.

یہ دستاویز اگر آپ کو کسی دیگر زبان یا دیگر شکل میں درکار ہو، یا اگر آپ کو ترجمان کی خدمات چاہئیں تو برائے مہربانی ہم سے رابطہ کیجئے۔

本文件可以翻译为另一语文版本，或制作成另一格式，如有此需要，或需要传译员的协助，请与我们联系。

Jeżeli chcieliby Państwo otrzymać ten dokument w innym języku lub w innym formacie albo jeżeli potrzebna jest pomoc tłumacza, to prosimy o kontakt z nami.

For general queries:

email improving.services@southbucks.gov.uk

website www.southbucks.gov.uk
(council and democracy / partnerships)

telephone **01895 837 200**

minicom **01895 837251** (The minicom is a telephone typewriter device for communication between deaf, hard of hearing and speech-impaired and/or hearing persons.)

or write to us at:

South Bucks Partnership,
South Bucks District Council,
Policy and Performance Team,
Capswood,
Oxford Road,
Denham,
Buckinghamshire,
UB9 4LH.

**BUCKS STRATEGIC
PARTNERSHIP**



promoting prosperity, tackling inequalities

South Bucks Partnership

