

CD 11/23

1/11/07  
Sage

# RIVERSIDE DEVELOPMENT OPPORTUNITY

## Taplow, Nr Maidenhead, Buckinghamshire



For illustration purposes only

A 19.4 Ha (48 acre) development opportunity with a range of existing accommodation including a former hotel, paper mill and the historic Dunloe House which are all set within an attractive riverside environment

The property benefits from significant water frontage to the River Thames and Jubilee River

The footprint of the existing buildings extends to 15,802 sq.m (170,057 sq.ft) with scope for extended development incorporating residential, commercial, hotel and leisure, health care facilities, care homes and retirement village developments (subject to the necessary consents)

Adjacent to Maidenhead and Taplow, which both have direct rail services to London Paddington (30 minutes) and is in close proximity to the M4 and Heathrow Airport



 King Sturge

020 7493 4933  
www.kingsturge.com

### Contacts

Simon Roddie  
Direct 0207 987 5581  
simon.rodie@kingsturge.com

Michael Hardy  
Direct 0207 987 5581  
michael.hardy@kingsturge.com

For further information please email [taplow@kingsturge.com](mailto:taplow@kingsturge.com)

Any additional offers are invited for the freehold interest by Friday 29th June 2007

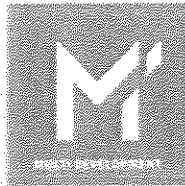
The site is offered for sale by private treaty

1 (Nov 2007)

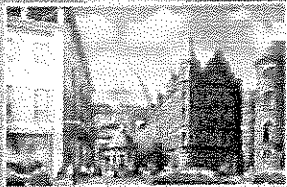
# Estates Gazette

Focus: North Wales & Cheshire  
Republic of Ireland

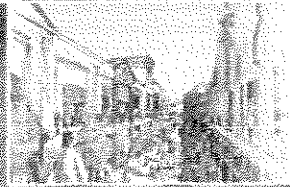
ESTATES GAZETTE 1453



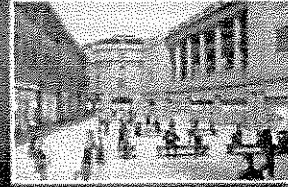
## THE POWER OF IMAGINATION



NOTTING HILL - LONDON



CANAL SQUARE - BIRMINGHAM



OLIVEGATE - SAN

[WWW.MDLTD.UK](http://WWW.MDLTD.UK)

DEVELOPMENT & INVESTMENT IN RETAIL

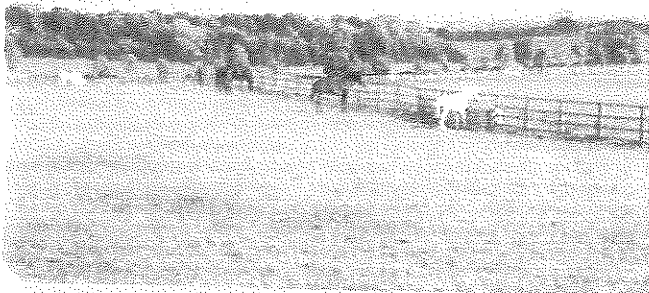
**MULTI DEVELOPMENT • MULTI INVESTMENT • MULTI ASSET MANAGEMENT • MULTI MALL MANAGEMENT**

IRE | IBERIA | ISRAEL | ITALY | JAPAN | KOREA | MALAYSIA | MEXICO | NETHERLANDS | NEW ZEALAND | POLAND | PORTUGAL | ROMANIA | SLOVAKIA | SLOVENIA | SPAIN | SWITZERLAND | UNITED KINGDOM

LANGLANDS

NR BEDALE, NORTH YORKSHIRE

COMPREHENSIVE FARM DEVELOPMENT OPPORTUNITY WITH A RANGE OF ACCOMMODATION



LOT 1 - LANGLANDS HOLIDAY

1000 sq m (2471 sq ft) of holiday accommodation with 10 bedrooms and 5 bathrooms

LOT 2 - LANGLANDS BUNGALOW

1000 sq m (2471 sq ft) of bungalow with 3 bedrooms and 2 bathrooms

LOT 3 - TENANTIED FARMS

1000 sq m (2471 sq ft) of tenantied farms with 1000 sq m (2471 sq ft) of housing and 1000 sq m (2471 sq ft) of storage

1000 sq m (2471 sq ft) of housing

Harrrogate  
Yorkshire  
YO17 5AP

For further information or to arrange a viewing, please contact us on 0207 493 4933 or visit our website at www.carterjonas.co.uk



Offices in London and throughout the UK



REMINDER

RIVERSIDE DEVELOPMENT OPPORTUNITY  
Taplow, Nr Maidenhead, Buckinghamshire

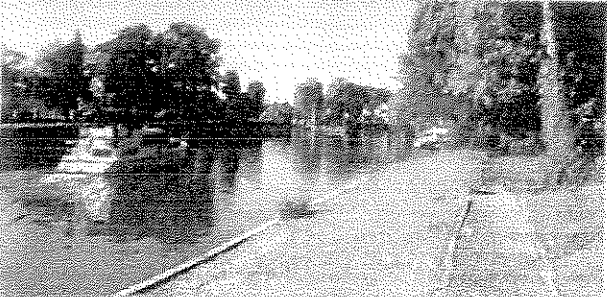


A 19.4 Ha (48 acre) development opportunity with a range of existing accommodation including a former hotel, paper mill and the historic Diplos House which are all set within an attractive riverside environment

The property benefits from significant water frontage to the River Thames and Jubilee River

The footprint of the existing buildings extends to 19,802 sq m (170,097 sq ft) with scope for extended development incorporating residential, commercial, hotel and leisure, health care facilities, care homes and retirement village developments (Subject to the necessary consents)

Adjacent to Maidenhead and Taplow, which both have direct rail services to London Paddington (30 minutes) and is in close proximity to the M4 and Heathrow Airport



**King Sturge**  
020 7493 4933  
www.kingsturge.com

**Contacts**  
Michael Manly  
Direct 0207 087 5931  
Mixed Use Development & Land, Transport & Energy  
Philip Papenfus  
Direct 0207 087 5670  
Office Agency - South East

\* To register for further information email: [taplow@kingsturge.com](mailto:taplow@kingsturge.com)

Unconditional offers are invited for the freehold interest by Friday 29th June 2007

This site is offered for sale by private treaty