

CSI:



South Bucks
District Council



THAMES VALLEY
POLICE

COMMUNITY SAFETY INFORMATION Issue 3 2011

South Bucks Burglary victims to receive forensic property marking kits

From May 2011, burglary victims in South Bucks will receive a free Selecta DNA forensic property marking kit and accompanying signage for their road as part of a crackdown on repeatedly targeted roads in the District.

SELECTADNA is one of the most advanced forensic crime reduction system on the market. Items such as TVs, computers, SatNavs, MP3 players, bicycles and antiques can be instantly secured by applying SELECTADNA. Once dry SELECTADNA is completely invisible to the naked eye, but each kit contains a unique DNA code glows under UV light. The Police search for traces of SelectaDNA as it allows them to quickly link stolen goods with a crime scene and with an offender.



On entry to custody suites in both Buckinghamshire and Berkshire, offenders and their clothing are also scanned for any traces of the product which can come from businesses when their SelectaDNA intruder Sprays are triggered above doors and windows.

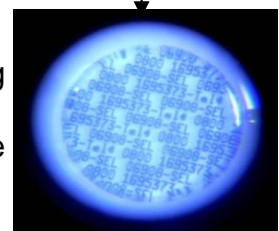


This property marking project will also look to promote the use of Selecta DNA forensic marking kits across the District, particularly in the areas of New Denham and Stoke Poges. Between January and June 2010 residents living in repeatedly targeted roads received a SelectaDNA kit. There was an 87 per cent decrease in burglary in these location during this period compared to the twelve months prior to distribution.



South Bucks District Councillor Anita Cranmer, Portfolio Holder for Community, says, "It is evident that this joint initiative with Thames Valley Police is producing positive results and is credit to the hard work of the Neighbourhood Policing teams and Community Safety team at the Council."

Chief Inspector Kate Ford, LPA Commander for South Bucks says, "We are aiming to reduce burglary by a further 5% this year. Our warning signs, posters and labels, telling criminals to stay away, are hugely effective because of the 'DNA Fear Factor'. Our DNA evidence deters criminals and provides the evidential chain Police Officers require to be more effective in their jobs."



KEEP YOUR EYE ON CRIME IN BUCKS

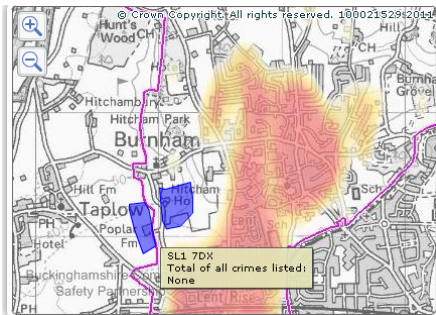
WANT local crime hotspots and up-to-date rolling information at the touch of a button? www.ionbucks.info provides the most detailed break-down of crime figures currently available to the residents of Buckinghamshire.



i: on Bucks allows people to check crime levels in their area. People can search by postcode, view local maps, and see changes over time. The website, www.ionbucks.info, is run by Buckinghamshire Community Safety Partnership, and gives residents access to locally relevant crime figures.

Launched in June 2009, i: on Bucks displays crime as patterns (hotspots) with the ability for users to "zoom" in to street level maps and see how many crimes occurred in their postcode. Information is also available under the 'news' tab about offenders who have been brought to justice. The i: on Bucks approach to displaying crime as hotspots and at postcode level was developed in conjunction with the Information Commissioner's Office (ICO) and Spencer Chainey who is a leading expert in the field of crime mapping and provides guidance to the Home Office.

The requirement for police forces to publish crime statistics at "street level" has led to the recent revamp of the national crime mapping site by the National Policing Improvement Agency (NPIA). The national crime mapping site uses crime displayed as points on a map. In comparison i: on Bucks displays crime as patterns on a rolling 12 month basis which reduces the likelihood of individuals being identified and provides users with the ability to see trend information to identify if a problem is increasing, reducing or staying the same.



By displaying information both in charts and tables; and on a map, i: on Bucks is easy to access and understand. Updated monthly, the statistics show the total number of a group of crimes which can then be broken down into street crime, domestic burglary, vehicle crime and less serious assaults. Users can compare figures against the same period the

previous year to see the changes in the crime trends. It's a locally-run site displaying crime in an easy-to-interpret format. Why not have a look for yourself! www.ionbucks.info

ASB performance 05/04/2010 to 06/04/2011

Full report is available from Thames Valley Police

Issue	Incidents	% change
Abandoned vehicles	Down by 74	-27.2%
Hoax calls to emergency services	Down by 136	-63%
Rowdy or inconsiderate behaviour	Down by 481	-29.2%
Vehicle nuisance	Down by 216	-32.5%
Criminal damage to a vehicle	Down by 94	-24.9%
Criminal damage to a dwelling	Down by 52	-34.2%
Malicious communications	Down by 149	-85.1%

Tea Party

in support of Wycombe Women's Aid

Sunday 26th June 2011 from 3 – 5 pm
 Longburrow Hall, Park Lane,
 Stokenchurch, HP14 3TQ
 £12.50 per person
 Tickets from: 01494 525216

Entertainment
 from the Galliard Band

Community Service Volunteers needed

Volunteers are needed to help identify and to overcome the impact of being victim of crime by providing free and confidential emotional and practical support, which is tailored to meet individual's needs. They are based in the local community and usually have contact with people over the phone, in the person's home, VS offices or community places. Volunteers develop knowledge of the effects of crime, and how Victim Support can help. They are able to provide information about the criminal justice process and liaise with other agencies. Tel: **0845 4 503 883**

Warmer Weather Brings out the Burglars

Residents in South Bucks are being warned by South Bucks District Council's Community Safety Team *not* to create a window of opportunity for burglars as the warmer weather approaches.

Burglars are known to cash in on the warm weather, leaving home owners who are out sun-worshipping or catching up on DIY to count the cost. Windows and doors left open or unlocked while residents are out or even in the back garden, are an invitation to criminals.

South Bucks District Council's Community Safety Team is warning the public to be more aware of securing their property during warmer weather.

South Bucks District Councillor Anita Cranmer, Portfolio Holder for Community, says "As the warmer weather is upon us, the need to open windows and let fresh air in becomes a necessity. Unfortunately, open windows and doors can become an open invitation to burglars and that is why we are urging residents to be vigilant".

Neighbourhood Inspector Bhupinder Rai says, "The temptation to leave windows open is greater than ever with warmer days and lighter evenings. However, burglars will see an open window and seize their opportunity – an open window is an open invitation. It only takes a moment for them to gain entry and steal small items such as car keys, laptops and cameras. Keep these out of sight of windows and the letterbox too".

"Close and lock your windows and doors, even if you only leave home for a short time, or even if you're just in the garden. Burglars sometimes like to work undercover, therefore I would advise residents to trim hedges back this spring. Where possible, they should also keep garden tools locked away."

If you would like more advice on how to protect yourself from crime, telephone a Thames Valley Police crime reduction adviser on **0845 8 505 505**. Or you can contact South Bucks District Council's Community Safety Team on 01895 837200 or email communitysafety@southbucks.gov.uk.



Who to turn to in South Bucks for support, help and advice?

Thames Valley Police (Domestic Violence Unit)

0845 8 505 505

24hr National Domestic Violence helpline

08082 00 247

Wycombe Womens Aid

01494 421367



Mobile CCTV update

Mobile CCTV cameras are currently deployed in 3 locations across South Bucks.

- Lent Rise Road, Burnham
- Thornbridge Road, Iver
- High Street, Burnham



Man jailed after £600,000 of drugs found in car at Beaconsfield Services:

A 28-year-old man has been jailed after cocaine with a street value of £600,000 was found in his car when he was stopped on the M40 in Buckinghamshire. Chapman was followed by officers in an armed response vehicle after being seen driving a silver Saab erratically and at speed along the M40 on 19 November 2010.

He was stopped at Beaconsfield Services at about 12.51pm and as officers approached his car, Chapman became agitated and was acting strangely, giving officers cause for concern. On carrying out a search of the vehicle, officers found three large blocks of white powder, which after being submitted for testing was confirmed as three kilos of cocaine which was more than two-thirds pure. David Chapman, of Rissington Road, Bourton-on-the-Water, Gloucestershire, **was sentenced to eight years in prison** (less 75 days for an early guilty plea), after admitting a charge of possession of a class A drug with intent to supply. He was sentenced at Aylesbury Crown Court on 20/4/11.

A little Sheducation to keep thieves locked out

'Keep thieves locked out', is the message to residents from South Bucks District Council.

Allotment and shed owners in South Bucks are being warned by South Bucks District Council's Community Safety team that their garden shed has increasingly become a happy hunting ground for thieves. With the majority of houses being equipped with burglar alarms and other security measures, traditional burglars are opting for easy pickings at the end of the garden.



Neighbourhood Inspector Bhupinder Rai says, "Valuable equipment such as bicycles, lawnmowers, garden and power tools, are stored in sheds and garages, unlocked and often without adequate security measures in place. The shed, garage or out building is often situated well away from the house and is often easier to break into, and less likely to be alarmed. South Bucks District Councillor Anita Cranmer, Portfolio Holder for Community, says, "Sheds are notoriously easy to break into. Any padlock, no matter how expensive, fitted on a flimsy clasp, held by a couple of screws in a soft timber doorframe, offers no real protection. Once in, the tools and other valuables are ready-to-hand and often not security marked. So think about your shed and the equipment in it.'

How could you adopt some of these ideas to make your shed more secure?

Some simple crime prevention tips to follow include:

- **Make sure that you lock your shed.**
Use strong padlocks and other locks. Fix padlock protectors to all padlocks. Replace exposed screws on hinges/locks with coach bolts.
- **Fit an alarm to your shed.**
These are cheap and easy to install and can be very effective.
- **Security mark the contents of your shed.**
Make a note of the serial numbers of any equipment. You may want to consider photographing valuable items.
- **Check that your insurance covers thefts from your shed or garden.**
- **Fit an external security light that is activated by movement.**
- **Make sure that you put tools and ladders away after use**
- a burglar could use YOUR tools to break into YOUR HOME.
- **Secure any windows and prevent anyone from seeing into your shed by covering windows.**
- **Try to secure items such as bicycles to the structure of the building**

If you have any questions, please do not hesitate to contact the South Bucks Community Safety Team on 01895 837200 or the South Bucks Crime Reduction Advisor at Thames Valley Police on 0845 8 505 505.

Gerrards Cross Community Parking Watch

In March, 64 letters were sent to vehicle owners who had parked illegally or inconsiderately in Gerrards Cross

Thames Valley Police Ringmaster

Would you like to know what crime trends are occurring in your area?

Sign up to community messaging:

www.tvpcommunitymessaging.org

Register your valuables

www.immobilise.com

Rape Crisis

Women Supporting Women Survivors of Rape, Sexual Assault & Childhood Sexual Abuse in South Buckinghamshire.

We are an organisation of women supporting female survivors of any form of sexual violence - rape, assault or child sexual abuse - whether historical, recent or current. We offer befriending, counselling face-to-face or on the phone, telephone support, support when going to the police/court/health appointments/form filling, weekly self-help groups, support to non-abusing friends and family of survivor, talks/training, support to other organisations, a part-time youth out-reach worker and a part-time Asian out-reach worker.

For urgent help, advice and support call our Helpline on:

01494 46 22 22

together we can together we can