

# South Bucks Partnership Strategy 2011 - 2014



## Community Safety Strategy 2011-2014.

1. Introduction
  - 1.1 South Bucks Community Safety Partnership Vision Statement:
  - 1.2 Who we are
  - 1.3 Our role
  - 1.4 Linking with other plans
  - 1.5 Links to community safety issues with partners in other districts & county-wide
  - 1.6 South Bucks Reporting Structure
  - 1.7 How we operate
  - 1.8 Big Society
  - 1.9 Communities helping us to reduce crime
  - 1.10 Focus on the most vulnerable
  
2. South Bucks Community Safety Partnership Priorities
  - 2.1 Evidence for South Bucks priorities
  - 2.2 Seasonality
  - 2.3 Criminality and understanding the causes of crime
  
3. Priority One: Reduce burglary
4. Priority Two: Reduce the impact of anti social behaviour in our community
5. Priority Three: Reduce vehicle crime
6. Priority Four: Protect vulnerable Individuals and Communities
7. Priority Five: Reduce the harm caused by drug & alcohol misuse
8. Priority Six: Reduce the number of casualties occurring on our roads

9. How we will keep you involved
10. Partnership Risk Log
11. Resources
  - 11.1 Resourcing the Partnership Plan
  - 11.2 Reviewing Resources
12. Contact Details
13. Glossary of Acronyms

## 1. Introduction

### 1.1 Introduction:

The Community Safety Strategy sets out the work that will be achieved throughout the next 3 years. Each year the strategy will be supported by an annual plan which will set out work which is additional to the normal business of the Community Safety Partnership detailed within this strategy. Some of the projects that established since 1998 have worked so well that they are now considered the way of doing business. With this in mind this new 3 year strategy will highlight this work but it will not appear in the annual plans which will concentrate on developing projects and new work.

### 1.2 South Bucks Community Safety Partnership Vision Statement:

“To work together to reduce crime, disorder and the fear of crime within South Bucks District”

### 1.3 Who we are:

South Bucks Community Safety Partnership is a statutory partnership formed as a result of the Crime & Disorder Act 1998, and includes senior officers from the following organisations:

- South Bucks District Council
- Buckinghamshire County Council
- Thames Valley Police (South Bucks Local Policing Area)
- Thames Valley Police Authority
- NHS Buckinghamshire
- Thames Valley Probation
- Buckinghamshire Fire & Rescue Service
- Buckinghamshire Youth Offending Service
- Buckinghamshire Drug & Alcohol Action Team
- L&Q Housing Association

- Voluntary Organisations including, CrimeStoppers & Victim Support

#### 1.4 Our role:

Community Safety is about action to tackle crime and disorder. It is also about fear of crime, as people's perception can be worse than the reality. Community Safety involves us all, it affects everyone who lives, works or visits South Bucks District.

The South Bucks Community Safety Partnership facilitates the co-ordination of local activities to reduce crime, disorder and the fear of crime by selecting the most appropriate course of action, ensuring agencies are not working in isolation and that resources are targeted.

#### 1.5 Linking with other Plans:

The South Bucks Community Safety Partnership has identified cross cutting issues where we can work with other Partnerships or agencies on areas of common interest which include:

- Links with Regional Reducing Re-offending Action Plan & Youth Offending Service (Offender Management & Youth Justice)
- Working with the Local Strategic Partnership on priorities that impact crime and disorder
- Links with the Local Policing Plan through Thames Valley Police Authority
- Links with the Drug & Alcohol Action Team's Annual Treatment Plan, Drugs Availability Plan & Communities Plan
- Links with the Countywide Domestic Abuse Strategy

#### 1.6 Links to Community Safety Issues with Partners in other Districts & County-wide

In Two-Tier Areas there is now a strategic requirement for the 'County Strategy Group' (Safer and Stronger Bucks Partnership Board) to prepare an annual 'Community Safety Agreement'. This agreement shall identify:

- (a) The ways in which the responsible authorities and partners in the county area might more effectively implement the priorities set out in the strategic assessment through coordinated or joint working; and
- (b) How the responsible authorities and partners in the county might otherwise reduce crime and disorder or combat substance misuse through coordinated or joint working.

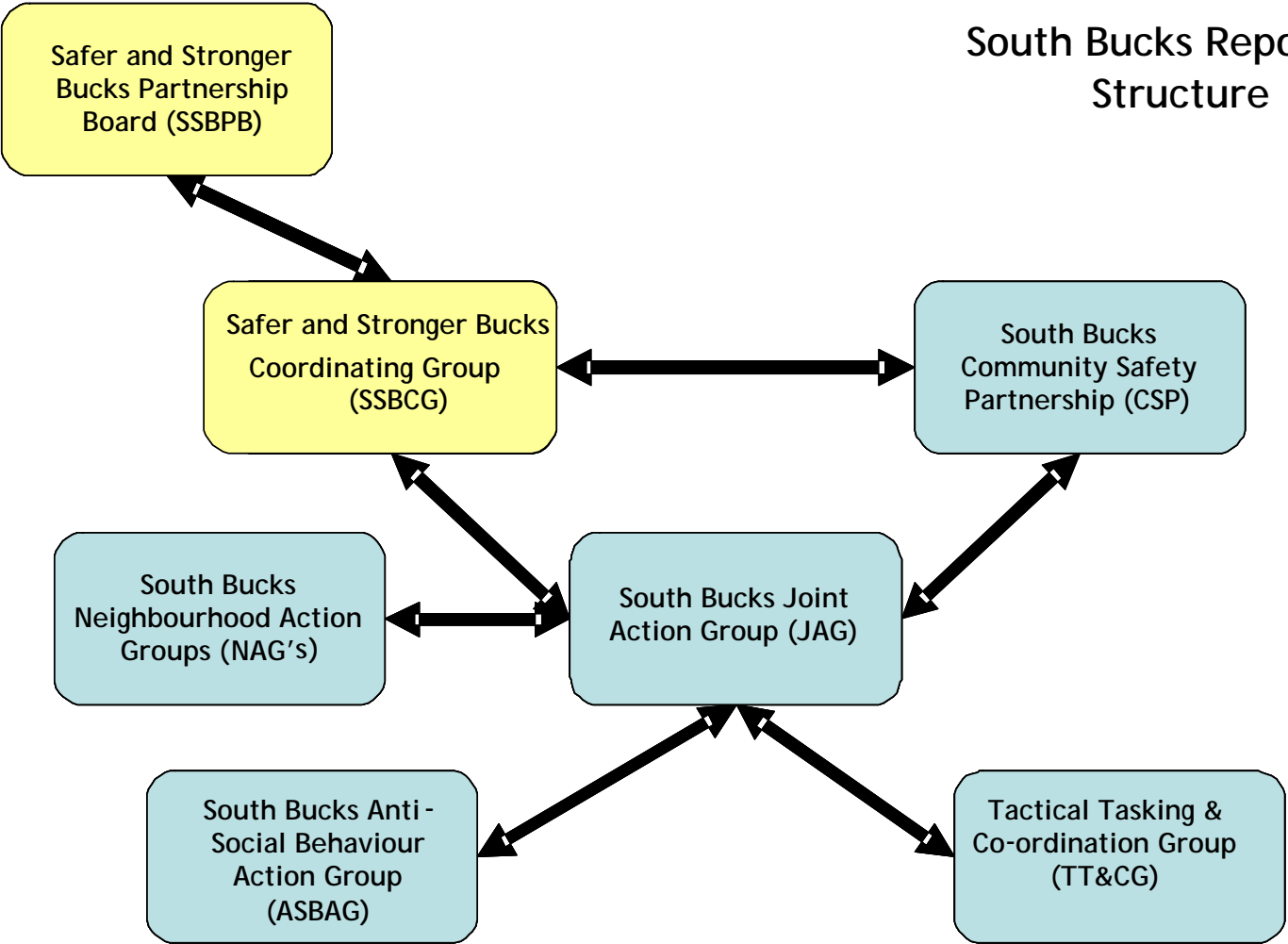
In Buckinghamshire this is called the, 'Safer Bucks Plan' and it sets out how we will work together in partnership with community safety colleagues across districts and county wide to ensure that we maximise the opportunities to share best practice, and achieve economies of scale. For some issues it is appropriate to work in a local area and for others it may be more sensible to work with colleagues to address an

issue at a county wide level. We are committed to working in Partnership to deliver the most sensible approach to responding to the local need.

In implementing the new statutory requirements in Buckinghamshire, the Safer and Stronger Bucks Partnership Board has agreed:

- To adopt a countywide framework which brings together the Local Area Agreement, countywide priorities and opportunities for economies of scale, sharing of expertise and consistency of approach where this makes sense
- To ensure that a countywide approach and decision making is only used where it can add value to local delivery.

# South Bucks Reporting Structure



All County-wide groups are highlighted in yellow.  
Those groups specific to South Bucks are highlighted in blue.

## 1.7 How we operate:

A Strategic Assessment is produced annually and is an analysis of crime and disorder trends, patterns, series and hotspots in Bucks for a 12 month period. In order to provide as full and accurate a picture as possible a wide range of data from many partner agencies and open sources has been used. The purpose of this process is to provide retrospective inferences about trends occurring in the past year, but also to make predictions about how emerging issues may affect the county in the coming year. The intention is that specific recommendations generated through this process will help to inform partner agencies so that they can direct resources to best target the priority issues identified.

Although the partnership utilises the Strategic Assessment to formulate the priorities for the forthcoming 3 years, we also review emerging and current crime activities in the following ways:

- Joint Action Group (JAG) meets regularly and reviews crime data pertinent to the priority themes identified in the plan.
- Tactical Tasking and co-ordinating group (Tasking) - monthly meeting reviewing crime data at an LPA level.

## 1.8 Big Society

The coalition government which came into power in 2010 has prioritised a move towards localism and the Big Society, and is looking to the public sector to achieve similar levels of success but with much tighter budgets.

For Community Safety, this will require continued efforts to involve the community as a key partner when dealing with issues of crime, disorder and other community safety matters. We have for a long time sought the help of the community and in the next three years this will need to be developed further. Neighbourhood Watches, Neighbourhood Action Groups and public meetings are some of the existing community focused initiatives that South Bucks has invested in. However, the existing community groups and consultation still needs to be developed further where possible to increase real levels of community involvement in solving the problems which they identify, which is a core element of big society.

## 1.9 Communities helping us to prevent crime.

Communities, in the widest sense of the term, are working together on either common interest or localised issues to help prevent crime. Examples of these include:

- Neighbourhood Watch
- Pub Watch
- Community Messaging
- Neighbourhood Action groups

## 1.10 Focus on the most vulnerable

To make the most of the resources that will be available to the partnership, it will need to focus its' work and resources on supporting the most vulnerable in the community. The partnership will also work to support members of the community who are less vulnerable, and wish to actively support those who are such as their neighbours or the wider community.

## 2. South Bucks Community Safety Partnership Priorities

### 2.1 Key priorities:

Following the latest Strategic Assessment the following priorities have been identified:

|                 |   |
|-----------------|---|
| Priority One:   | Reduce burglary   |
| Priority Two:   | Reduce the impact of anti social behaviour in our community |
| Priority Three: | Reduce vehicle crime  |
| Priority Four:  | Protect vulnerable Individuals and Communities              |
| Priority Five:  | Reduce the harm caused by drug & alcohol misuse             |
| Priority Six:   | Reduce the number of casualties occurring on our roads      |

As the Strategic Assessment is completed annually but this strategy covers 3 years these priorities will remain flexible so that changes in crime trends and other community safety issues can be incorporated.

### 2.2 Evidence for Priorities:

#### Seasonality

We know from reviewing data in this way that we have fluctuations in crime levels throughout the year. Some of these are due to seasonal aspects which can inadvertently help criminal activity, for example:

- Clocks going backwards - *allows a longer period of darkness for criminals to identify properties where no one is home*
- Summer months - *provide late evening light and warmth which encourages more people to remain in the public realm longer which can contribute to ASB, particularly during the school holiday periods.*
- Summer - warmer days can also lead to more property being left unsecured, such as buildings and vehicles with windows left open.
- Christmas - is a time when more people are out socialising and when more alcohol is consumed. Alcohol is a factor in many offences of sexual violence and domestic abuse, so it is common that these offences are seen to rise at these times.

## Criminality and understanding the cause of crime.

By reviewing our processes and data annually we are also able to recognise patterns of offending behaviour. In South Bucks many offences are committed by criminals from outside the district, including some from neighbouring authorities of Slough and Hillingdon. We also know that many of our offences are committed by a small number of offenders who offend regularly. Understanding how key offenders operate enables us to predict where they will offend, increasing the likelihood that they will be caught. Integrated Offender Management is key to achieve this as it ensures that priority offenders are managed by both support and enforcement action.

Knowing that our offenders come from outside of our district allows us to be more targeted with our resources. Some of our IOM work is conducted in Slough, and this reduces the level of crime in South Bucks.

Community safety now has access to more research and data which shows how local policy and particular circumstances in people's lives might make them more vulnerable to committing crimes. Better understanding of the effects of drink and drugs on someone's offending are now well documented in research.

### Priority 1: Reduce burglary

**Burglary Dwelling** - This is any burglary to a property that is lived in. These have decreased for the last 3 years and this year shows a 10% decrease from last year. The Community Safety Partnership has been working hard to reduce burglary levels and has been successful in doing so for a number of years. However, when compared to our Most Similar Community safety Partnership Family Group, defined by the Home Office, South Bucks experiences a higher than average proportion of this crime type when calculated as a rate per 1,000 population.

**Distraction Burglaries** - Where offenders lie to, or mislead residents to keep them talking at their front door to obtain property from their homes, usually with an accomplice there were 11 this year compared to 26 last year.

**Car Key Burglaries** - This is where offenders break into a property with the intention of stealing car keys, so that they can steal a car owned by the occupier. There have been 63 this year in South Bucks compared to 73 last year.

**Burglary Non Dwelling** - This includes burglary of any business property or building that is not lived in such as sheds and detached garages. This has reduced by 8% this year which is in line with national figures.

## Priority 2: Reduce the impact of antisocial behaviour in our community

Anti social behaviour (ASB) is phrase used for a wide range of issues from crime and serious nuisance to less severe but frequent and annoying behaviour. Most types of anti-social behaviour fit into one of three broad categories: street problems, nuisance neighbours or environmental crime (Home Office Website.) An Anti Social Behaviour Strategy for Buckinghamshire is in place to cover 2010-2013.

ASB has been highlighted as one of the three priorities in 7 of the 9 Neighbourhood Action Groups (NAG) across South Bucks. The anti-social behaviour priorities that have been identified by each of the NAG's in South Bucks have been further defined as; anti-social behaviour involving young people, and factors that adversely effect the environment, such as graffiti.

The Best Value General User Survey 2006/07 conducted for South Bucks District Council (sample of 1,344 residents) found that 55% of respondents identified that 'Teenagers hanging around the streets' was a key issues for South Bucks followed by 54% of respondents identifying 'Parents not taking responsibility for the behaviour of their children' as a key issue.

In terms of public perception, the community of South Bucks appear more fearful of ASB than crime itself, particularly if incidents of ASB have already been experienced in a location. Witnessing youths congregating, especially in the evenings, elicits feelings of intimidation within the community and a sense that crime and ASB must be occurring there. Residents are often unwilling to identify perpetrators or report incidents for fear of reprisals. The public have varying levels of what they believe to be acceptable/unacceptable behaviour. As is the case for many crime types, we understand that a lot of anti-social behaviour is not reported to Thames Valley Police. Both South Bucks District Council and L&Q Beacon Housing, record incidents of anti-social behaviour reported to them and by collating this data the Partnership can establish a better understanding of where anti-social behaviour is occurring in the District and target resources effectively.

According to the Strategic Assessment, which covered the period July 2009 to June 2010, reports fly tipping increased by 10% compared to the previous strategic assessment, this means that 75 additional offences took place in the district. However, there has been an 80% reduction in reports of graffiti. This is partly due to the quick removal of offensive and abusive graffiti which is removed at a cost to South Bucks District Council. Other graffiti has been removed by offenders as part of their sentencing for offences. There have only been 5 abandoned vehicles which were required to be dealt with in South Bucks in the period covered by the strategic assessment. This may be partly due to the increased value of old vehicles for scrap metal and parts.

There has been a substantial reduction in the number of deliberate fires across the whole of South Bucks in the past year. Police and Fire Service figures do not always correlate however improvements are currently being made to analysis and tasking processes.

### Priority 3: Reduce acquisitive vehicle crime

There are 2 types of offence which form this priority, theft of motor vehicle - where a vehicle is unlawfully taken by an offender, and theft from motor vehicle - when property is taken from a vehicle. Laptops and SatNavs have been the most commonly stolen property. Whilst theft of vehicles is much less frequent, the partnership recognises that the impact of this is greater for the victim.

There have been 915 Thefts from Vehicles in South Bucks this year compared to 971 last year; a 6% decrease. Theft of Vehicle offences have continued to decrease in South Bucks over the last 4 years. However, it is still most common acquisitive crime (crime where property is stolen by an offender) committed in South Bucks. There have been 163 thefts of vehicles this year compared to 206 last year (a 21% decrease), this reflects changes to national figures. The Community Safety Partnership has been working hard to reduce vehicle crime levels and has been successful in doing so for a number of years. However, when compared to our 'Most Similar Community Safety Partnership Family Group', defined by the Home Office, South Bucks experiences a higher than average proportion of this crime type when calculated as a rate per 1,000 population.

### Priority 4: Protect vulnerable individuals and communities

Whilst our work in relation to the other priorities in this strategy will often support and protect the vulnerable, and we will prioritise these members of our community because of their vulnerability, some offences did not fit under the other priorities, and this is why this priority has been included.

Vulnerable sectors of the community include the elderly and those with disabilities who can be targeted by offenders of crimes such as distraction burglary. Certain groups within our community may be at a greater risk of sexual violence, and our BME (black and minority ethnic) population may be targeted because of their ethnicity. Communities and individuals who may be at risk of exposure or involvement with extremist views and activities are also considered under this priority.

Offences that can cause great harm to individuals are also included, such as any form of domestic abuse and sexual violence. Examples of sexual violence are offences such as indecent exposure and rape.

Domestic related offences have remained relatively low whilst domestic incidents have massively increased over the last 2 years. The victim profile for domestic abuse suggests that the proportion of female victims has increased slightly from 70% last year to 74% this year (this correlates with the national theory that men are increasingly under-reporting).

In South Bucks serious sexual offences have remained at the same level as last year (despite a 6% national increase) and detection rates are above target. During the reporting period 44% of offences could be described as unsupported in nature, where the victim refuses to support the complaint, has mental health issues or where there is credible evidence to the contrary. This is a consistent trend in the reporting period. The offences most affected, with more than 50% of offences in nature, are Rape of a Female aged 16 and over (mental health issues or consensual sex), Rape of a Female Child under 16 (mental health issues), Sexual Assault on a Female aged 13 and over - Penetration (credible evidence to the contrary) and Sexual Assault on a Male aged 13 and over - Penetration (two offences). Nationally, a third of victims withdraw their complaint about rape because they are afraid to go to court and there have been reports of women pressured into withdrawing complaints. In relation to victims, 69% of those for rape of a female aged 16 and over and 72% of those for sexual assault on a Female aged 13 and over - non penetration are under 30 years old. Whilst in all offences 30% of the offenders are unknown to the victim, the proportion increases to 38% for rape of a female aged 16 and over and 44% for sexual assault on a female aged 13 and over.

#### Priority 5: Reduce the harm caused by drug & alcohol misuse

Poisoning/substance misuse figures show 57 individuals were admitted to hospital between April '09 and March '10, accounting for 16% of the county's admissions.

Little intelligence regarding drug dealing and drug use is received that relates to South Bucks Local Policing Area. However, the intelligence that has been received suggests that the drug most frequently dealt in South Bucks Local Policing Area is cocaine followed by crack.

The Strategic Assessment showed that the most frequent offences committed by those shown as alleged offender for drugs offences on the Thames Valley Police crime recording system (CEDAR) in South Bucks Local Policing Area were Criminal Damage to Vehicles and Public Order Act offences.

Particular attention also needs to be given to the harm caused by alcohol misuse. Alcohol related offending has decreased over the past three years on a countywide basis but South Bucks, according to local Alcohol profiles (NWPFO), has higher than average alcohol related offending including alcohol related violence. Alcohol related disorder is a focus via the night time economy with incidents occurring around the one nightclub in South Bucks, based in Beaconsfield.

The Community Safety Partnership will also focus attention on under-age alcohol related harm as local intelligence suggests this plays a part in anti-social behaviour in the District. There is concern that if there is an increase in under-age sales, it is expected that South Bucks will experience an increase in school truancy, sexually transmitted diseases and unplanned pregnancies.

#### Priority 6: Reduce the number of casualties occurring on our roads

The Strategic Assessment highlighted that although there have been good reductions (21%) in the number of serious casualties of road traffic accidents; the number of fatalities has continued to remain constant. Although the reductions for South Bucks are more positive than the county as a whole, which has seen fairly constant levels of serious injury, South Bucks does have 2 of the 5 roads with the highest number of incidents. Young drivers aged between 17 and 24, motorcyclists and people driving to work have been identified as the most vulnerable group of road users. A third of all crashes involve drivers on business. A new data analysis tool has become available to the Road Safety Team that enables analysis of postcodes and socio-economic data. This will be used to effectively target educational and publicity campaigns at the relevant road users in due course. Another emerging trend, identified by roadside checks with TVSRP Road Safety Constable, has shown high numbers of seatbelt and speeding offences.

Speeding has a very high public profile and is at the top of the majority of Neighbourhood Action Group priorities. Generally, satisfaction around road safety in Buckinghamshire is low. According to the Transportation Survey, satisfaction rates were at 38% in 2009 and 33% in 2010. The annual benchmarking club regional survey also indicated low levels of satisfaction with motorcycle training and driver education. Driver training is offered to all vulnerable groups and initiatives include; 'Be a Better Biker' which is run across the county throughout the summer for motorcyclists and a winter driving workshop for vehicle owners in the autumn, and 'Get in Gear', a new initiative for young drivers supported by Department for Transport. Local companies are also offered business driver assessments. Older drivers can take assessments with a driving instructor in their local area after a period of ill health which has taken them off the road, Finally, a new campaign called 'Copycat' which aims to encourage parents to set a good example to their children whilst driving, is to launch in September. Speed limit reviews are in progress and are due to be completed in all areas by 2012.

### 3. Mainstreamed Community Safety Activity

The actions which are listed below under each of the priorities are work that is considered to be core to what we do as a partnership. As long as funding and resources are maintained we aim to continue to do this work unless it ceases to be effective.

#### Priority 1 - Reduce Burglary

| Project                        | Activity  | Lead Agency                                      | Date    | Resources   | Target   |
|--------------------------------|---|--|---------|---|--|
| Advice and publicity           | Press releases for the district as a whole  | Thames Valley Police and SBDC                    | Ongoing | Communications Teams  | To raise awareness and educate. Help reduce the Fear of Crime.                   |
|                                | Advice to victims of burglary   |  |         |   |  |
|                                | Face to face contact with the community   |  |         |   |  |
| Integrated Offender Management | Holistic approach to deal with individuals who commit the most crime                      | Thames Valley Police and Thames Valley Probation | Ongoing | Any required resources that can be obtained through partnership in each case. | To reduce the level of offending by offenders targeted                           |
| Maintain Good ANPR coverage    | Ensure the district continues to be covered by ANPR                                       | Thames Valley Police, SBDC and BTC               | Ongoing | Financed by SBDC/BTC and TVP  | To be able to record movement of vehicles used by criminals.                     |
| Property Marking campaign      | Roll out Property marking kits and signs to all burglary hotspot streets in the District. | SBDC and Thames Valley Police                    | Ongoing | Funding to be identified as and when needed.                                  | To help communities protect their property and provide opportunities to educate. |
| Communications                 | Promote seasonal messages in  | SBDC and Thames Valley Police                    | Ongoing | Communications teams  | To raise awareness and educate   |

|                           |  |                                |                   |  |   |
|---------------------------|--|--------------------------------|-------------------|--|---|
|                           | priority months for domestic burglary.   |                                |                   |  |   |
| Tasking (TT&CG)           | TT&CG to address local acquisitive crime in priority areas. Focus on Offenders and shorter term changes in crime and disorder levels | Police (TT&CG) and SBDC (JAG)  | Ongoing - Monthly |  | To ensure resources (particularly police resources) are used effectively in response to recent crime and disorder |
| JAG                       | JAG to address local acquisitive crime in priority areas.  | SBDC                           | Ongoing - Monthly |  | To manage medium and long term projects to deliver the Partnership Plan   |
| No Doorstep Selling Zones | Establish No Doorstep selling zones in areas where residents are vulnerable to rogue traders and distraction burglaries              | BCC Trading Standards and SBDC | Ongoing           | Signs and stickers provided by Trading Standards | To educate communities in dealing with doorstep callers to help prevent rogue traders and distraction Burglaries. |

Priority 2 - Reduce the impact of anti social behaviour in our community

| Project   | Activity   | Lead Agency               | Date                | Resources  | Target  |
|---|--|---------------------------|---------------------|--|---|
| Youth Communications  | Partnership to co-ordinate the advertising of youth activities during school holidays. | SBDC                      | All School holidays | Identified as and when needed. Existing activities, unless funding is identified for additional programmes | Ensure young people are aware of activities that are available. Reduce calls to the partnership about youths hanging around.  |
| ASBAG (Anti-Social Behaviour Action Group) to provide multi-agency approach to tackling perpetrators of ASB | Partnership meeting to share information and agree actions                             | SBDC/Thames Valley Police | Ongoing - Monthly   |  | Ensure joined up ASB activity across the district   |
| ASB Communications  | ASB campaign to encourage residents to report ASB to appropriate agency/officer.       | SBDC                      | Ongoing             | Communications Teams   | Increase awareness of the importance of reporting ASB and who to report it to. Increase the proportion of ASB being reported. |
| Mobile CCTV camera  | Use mobile CCTV in key areas as identified by analysis                                 | Thames Valley Police      | Ongoing             | Existing mobile CCTV units. Funding for installation identified when required                              | Protect vulnerable individuals and communities by preventing offences or increasing evidence in key                           |

|                                     |  |                                 |         |  |  |
|-------------------------------------|--|---------------------------------|---------|--|--|
|                                     |  |                                 |         |  | locations  |
| Perception of ASB                   | Bring perception of ASB closer to reality.   | SBDC/Thames Valley Police       | Ongoing | Communications Teams                             | Lower fear of ASB  |
| Sports and Arts Projects            | Use sports and arts projects in locations identified as areas where ASB from young people is a concern | SBDC                            | Ongoing | SBDC Leisure Team                                | Get more young people from areas where ASB has been reported involved in sports and arts |
| Mediation                           | Offer mediation to all victims of ASB contacting ASB Team  | SBDC/Mediation Bucks            | Ongoing | Mediation services, Materials to promote service | More complaints resolved through mediation   |
| Reparation work offenders           | Reparation work within South Bucks<br><br>Painting over/removal of Graffiti<br><br>Litter Picking      | Thames Valley Probation and YOS | Ongoing | Equipment  | More visible reparation. Reduced graffiti and litter in district                         |
| Derelict Building Reporting         | Ensure 2 day response to all reports of derelict buildings in District.                                | BFRS                            | Ongoing |  | Arson prevented on identified properties   |
| The Fire Setter Intervention Scheme | Target young people who have deliberately set  | BFRS                            | Ongoing |  | Individuals referred do not commit fire related offences                                 |

|                             |  |      |         |  |  |
|-----------------------------|--|------|---------|--|--|
|                             | fires to educate about dangers of fire                         |      |         |  |  |
| Support 'Arson About' Plays | Plays to educate groups about the dangers of playing with fire | BFRS | Ongoing |  | Positive evaluation of plays showing that audience has benefited |

### Priority 3 - Reduce vehicle crime

| Project                     | Activity  | Lead Agency                       | Date    | Resources                    | Target   |
|-----------------------------|---|-----------------------------------|---------|------------------------------|--|
| Maintain good ANPR Coverage | Promote benefits within partnership and also to community.                            | Thames Valley Police/SBDC and BTC | Ongoing | Financed by SBDC/BTC and TVP | Maintain support for ANPR to protect funding so that it can continue. To be able to record movement of vehicles used by criminals. |
| Communications              | Promote seasonal messages in priority months for domestic burglary and vehicle crime. | SBDC/Thames Valley Police         | Ongoing | Communication Teams          | To raise awareness and educate   |
| Park Mark Scheme            | Encourage local businesses not yet signed up to the Park Mark Scheme to join.         | SBDC                              | Ongoing |                              | Ensure that car parks across the district are meeting standards which can reduce the level of crime in those areas.                |

|                 |  |                               |                   |                      |   |
|-----------------|--|-------------------------------|-------------------|----------------------|---|
| Tasking (TT&CG) | TT&CG to address local acquisitive crime in priority areas. Focus on Offenders and shorter term changes in crime and disorder levels | Police (TT&CG) and SBDC (JAG) | Ongoing - Monthly |                      | To ensure resources (particularly police resources) are used effectively in response to recent crime and disorder |
| JAG             | JAG to address local acquisitive crime in priority areas.  | SBDC                          | Ongoing - Monthly |                      | To manage medium and long term projects to deliver Partnership Plan   |
| Communications  | Promote seasonal messages in priority months for domestic burglary and vehicle crime.  | SBDC/Thames Valley Police     | Ongoing           | Communications Teams | To raise awareness and educate community with regards to vehicle crime.   |

Priority 4 - Protect vulnerable Individuals and Communities

| Project  | Activity   | Lead Agency                   | Date   | Resources   | Target   |
|--|--|-------------------------------|--|---|--|
| Work in areas of South Bucks that are identified as hotspots for hate crime      | <p>Provide high levels of support to identified victims</p> <p>Encourage the community to report all incidents of hate crime</p> <p>Support work that will lead to long term solutions</p> | SBDC and Thames Valley Police | Ongoing  | Existing staff.   | Prevent vulnerable individuals in our district from becoming involved in extremist behaviour/activity                        |
| Community Outreach   | Improve engagement with BME communities in South Bucks   | SBDC and Thames Valley Police | Ongoing  | Existing Staff  | To ensure that services are available to our community and that BME communities have confidence to report issues or concerns |
| Support work around Supporting Vulnerable Individuals (SVI) related to extremism | Ensure vulnerable individuals are identified so that they can be referred and the appropriate support can be   | Thames Valley Police          | Ongoing, when individuals are identified in our district | Thames Valley Police SVI Officer and Bucks Partnership shared resources | To prevent vulnerable individuals from becoming involved in extremist activity   |

|                 |  |                                    |         |  |  |
|-----------------|--|------------------------------------|---------|--|--|
|                 | given to them  |                                    |         |  |  |
| MARAC/MAPPA/IOM | Focus on high risk cases to protect individuals and reduce reoffending by sharing information held by partners and completing relevant actions | Thames Valley Police and Probation | Ongoing | Nominated staff with partnership agencies and other identified resources | Prevent deaths from DV<br><br>Prevent known sexual offenders from further offences<br><br>Reduce level of offending of key individuals |

Priority 5 - Reduce the harm caused by drug & alcohol misuse

| Project               | Activity  | Lead Agency          | Date    | Resources              | Target   |
|-----------------------|---|----------------------|---------|------------------------|--|
| Operation Falcon      | Operations to catch offenders engaged in Drugs offences   | Thames Valley Police | Ongoing | Itemiser<br>Drugs dogs | Reduce supply of Class A drugs.  |
| Drug Litter Reporting | Encourage local communities (including NAGs, NHW and Parish Councils) and relevant officers moving around the District for work to complete and return Drug Litter Report form. | DAAT and SBDC        | Ongoing |                        | Identify areas in the district where drug use is taking place so that further intervention activity can be planned in those areas. |
| Itemiser (Drug        | Utilise in  | Thames Valley Police | Ongoing | Itemiser               | Identify drug  |

|                 |   |                               |         |            |  |
|-----------------|---|-------------------------------|---------|------------|--|
| Detector)       | Beaconsfield Night-Club and public houses   |                               |         | Drugs dogs | offenders and provide reassurance to other citizens  |
| PubWatch Scheme | Support Pubwatch<br>Share information<br>Distribution of community safety materials | SBDC and Thames Valley Police | Ongoing |            | Support licensed premises involved with Pubwatch to prevent alcohol related offences and behaviour |

#### Priority 6 - Reduce the number of casualties occurring on our roads

| Project                         | Activity   | Lead Agency | Date   | Resources   | Target  |
|---------------------------------|--|-------------|--|-------------|---|
| Hazard Alley                    | Support school attendance to Hazard Alley for education on dangers of fires.             | SBDC        | School term time                             | SBDC funded | Positive evaluation of visits showing that audience has benefited |
| 'Safe Drive - Stay Alive' event | Event held   | BFRS/TVP    | Ongoing                                      |             | Positive evaluation of plays showing that audience has benefited  |
| 'Learn & Live'                  | Key Stage 4 presentations to school children<br>Encourage all schools to become involved | BFRS        | Ongoing                                      |             | Positive evaluation of plays showing that audience has benefited  |
| Local Safety Schemes (LSS)      | Identify areas of concern and  | BCC         | A list of locations will be identified using | BCC         | Reduce casualties in areas identified as                          |

|  |                                       |  |                                    |  |                         |
|--|---------------------------------------|--|------------------------------------|--|-------------------------|
|  | make physical changes across district |  | collision data on an ongoing basis |  | hotspots for collisions |
|--|---------------------------------------|--|------------------------------------|--|-------------------------|

#### 4. How we will keep you involved

How we will keep you involved.

We will further develop those lines of communication that already exist with our local communities for example, Neighbourhood Actions Groups, and continue to establish new mechanisms to engage with those residents we have yet to reach.

We will provide reports on the work of the Partnership and become more visible in the local community by continuing to regularly attend community events:

- Regular and Useful messages to Neighbourhood Watch and Community Messenger members
- Nag meetings
- Local Area Forums
- Local Press
- Newsletters
- Public Meetings

## 5. Partnership Risk Log

| Ref | Risk Description   | Risk Likelihood  | Risk Impact  | Risk Mitigation  | Owner of Risk  |
|-----|--|--|--|--|--|
|     | <p><i>A risk is any event to adversely affect the ability of the project to achieve the defined objectives.</i></p> <p><i>Describe risk identified &amp; its likely impact on the project.</i></p> | <p><i>Rate the likelihood of the risk eventuating (i.e. low/ medium/ high)</i></p> | <p><i>Rate the impact on the project if the risk eventuates (i.e. low/ medium/ high)</i></p> | <p><i>Recommended Preventative Actions: Actions that should be taken to prevent the identified risk occurring.</i></p> <p><i>Recommended Contingent Actions: Actions that should be taken, in the event that the risk happens, to minimise its impact on the</i></p> | <p><i>Which partner will have responsibility for managing &amp; monitoring the risk?</i></p> |

|    |   |      |        | <i>project.</i>   |                              |
|----|---|------|--------|---|------------------------------|
| 1. | Staffing/ Resources - relevant officers could change. | High | Medium | Preventative Actions: Ensure all information is available to the Manager and that progress on project is logged.<br>Contingent Actions: Ensure handover between staff takes place.      | Manager of relevant officer. |
| 2. | Funding reduced by Home Office                        | High | High   | Preventative Actions: Actively seek alternative funding.<br>Contingent Actions: review funding arrangements and ensure each project has exit strategy proposal if no funding available. | BCC & Each CSP               |
| 3. | Changes to Government Legislation.                    | High | Low    | Contingent Actions: Inform CSP of any changes as they occur, to agree forward   | Community Safety Manager     |

|    |   |        |             |   |                          |
|----|---|--------|-------------|---|--------------------------|
|    |   |        |             | plan.   |                          |
| 4. | Change of political leadership at District Level or change of Government. This may change the Community Safety agenda.                  | Low    | Medium/High | Contingent Actions: Inform CSP of any changes as they occur, to agree forward plan.   | Community Safety Manager |
| 5. | Partners Targets and priorities - changes may be made to organisational plans and/or targets following publication of Partnership Plan. | Medium | High        | Preventative Actions: Partners to commit to targets set at time of publication<br><br>Contingent Actions: Partners to advise CSP when organisational plans are likely to change | All CSP Partners         |
| 6. | Changes to structure of Community Safety  | High   | High        | Preventative Actions: Partners to ensure structures are sustainable as far as possible<br><br>Contingent Actions: partners to advise CSP when changes to their organisation are | All Partners             |

|  |  |  |  |          |  |
|--|--|--|--|----------|--|
|  |  |  |  | required |  |
|--|--|--|--|----------|--|

## 6. Resources

### 6.1 Resourcing the Partnership Plan:

- Appropriate financial resources identified to deliver objectives outlined in Partnership Plan
- Mechanisms or measures to be put into place to ensure financial resources are being used effectively
- Partnership to ensure that Partners tasked with ensuring either strategic or operational delivery are appropriately skilled to meet objectives outlined in Partnership Plan

### 6.2 Reviewing Resources:

- Regular Cost/ benefit analysis of all partnership work
- Future planning is required (secure significant gains in efficiency, effectiveness or economy)
- Performance management to ensure best use of resources (including finances allocated to projects)

## 7. Contact Details

For more information about the South Bucks Community Safety Partnership, please contact the South Bucks Community Safety Team at the following address:

South Bucks District Council  
Capswood  
Oxford Road  
Denham  
Bucks  
UB9 4LH

Email: [CommunitySafety@southbucks.gov.uk](mailto:CommunitySafety@southbucks.gov.uk)

Telephone Number: (01895) 837 365

Fax: (01895) 837 399

Website: [www.southbucks.gov.uk](http://www.southbucks.gov.uk)

## 8. Glossary of Acronyms

|              |                                       |
|--------------|---------------------------------------|
| <b>ABC</b>   | Acceptable Behaviour Contract         |
| <b>OASIS</b> | Open Access Social Inclusion Support  |
| <b>ANPR</b>  | Automatic Number Plate Recognition    |
| <b>ASB</b>   | Anti Social Behaviour                 |
| <b>ASBAG</b> | Anti Social Behaviour Action Group    |
| <b>ASBO</b>  | Anti Social Behaviour Order           |
| <b>BCC</b>   | Buckinghamshire County Council        |
| <b>BFRS</b>  | Buckinghamshire Fire & Rescue Service |
| <b>BTC</b>   | Beaconsfield Town Council             |
| <b>CADO</b>  | Community and Diversity Officer       |
| <b>CCTV</b>  | Closed Circuit Television Camera      |
| <b>CDC</b>   | Chiltern District Council             |
| <b>CSP</b>   | Community Safety Partnership          |
| <b>DA</b>    | Domestic Abuse                        |
| <b>DAAT</b>  | Drug & Alcohol Action Team            |
| <b>IOM</b>   | Integrated Offender Management        |
| <b>JAG</b>   | Joint Action Group                    |

|             |                                  |
|-------------|----------------------------------|
| <b>LSP</b>  | Local Strategic partnership      |
| <b>NAG</b>  | Neighbourhood Action Group       |
| <b>PCSO</b> | Police Community Support Officer |
| <b>PSA</b>  | Public Service Agreement         |
| <b>SBDC</b> | South Bucks District Council     |
| <b>TVP</b>  | Thames valley Police             |
| <b>YOS</b>  | Youth Offending Service          |