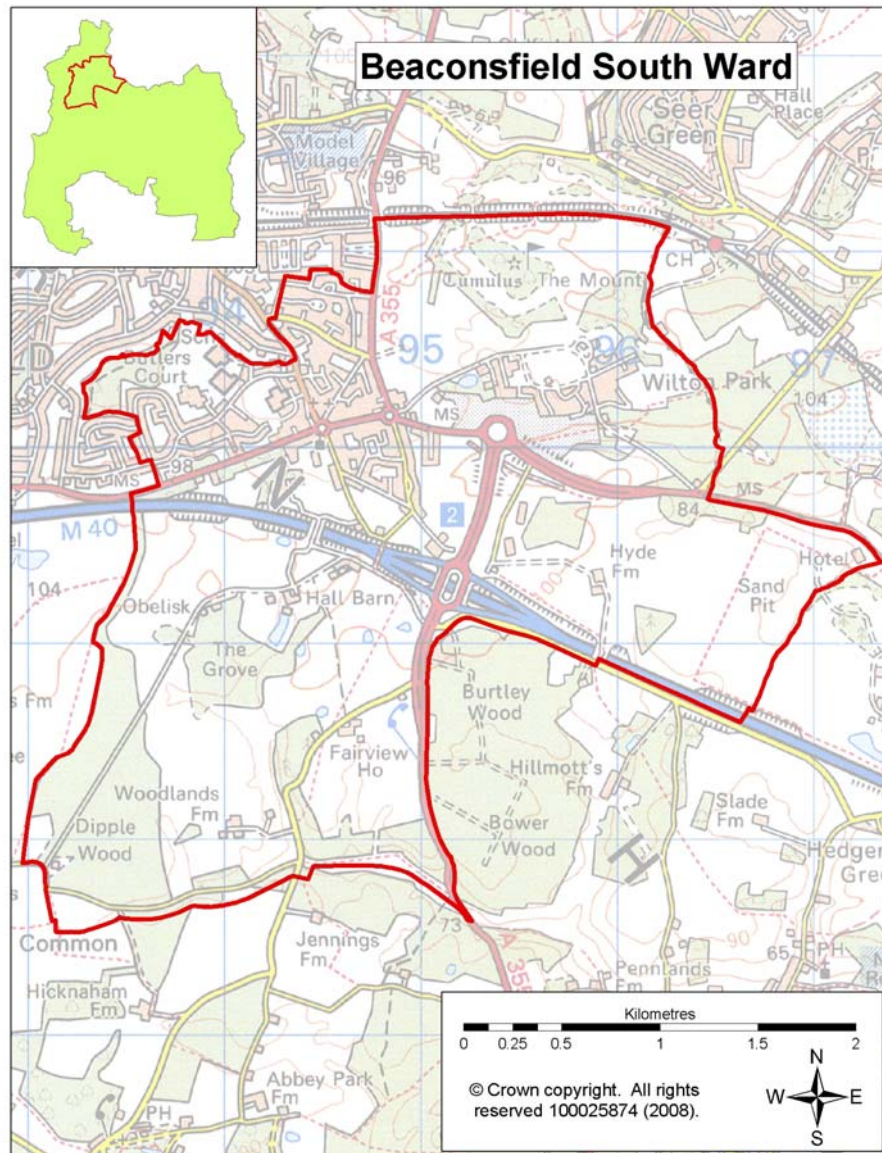


This ward profile aims to provide an overview of information about the Beaconsfield South Ward. The majority of this information is at ward level for Beaconsfield South, except for a small number of statistics which are only available at parish or district level.



## Summary of key points:

- 15.5% of the population are aged 65 and over (District average 18.3%). Based on population projections for the District this age group is predicted to increase by 20.1% by 2031 which may require changes to service provision;
- 84.2% of the Ward is greenspace higher than the District average of 77.5%;
- there is a higher percentage of rented housing in the Ward than the District average and less owner-occupied housing, 15.9% is social rented housing (District average 12.6%) and 11.4% is private rented housing (District average 6.1%);
- 22.7% of accommodation within the Ward is terrace housing, 14% higher than the District average;
- based on Acorn Categories 44.5% of the population are within the 'Wealthy Achiever' (District average 60.3%) and 22.7% fall within the 'Urban Professional's group higher than the District average of 10.9%.
- 22.1% of the population aged 16 to 74 in employment travel less than 2km to work, higher than the District average of 12.2%. There is a higher percentage of people travelling to work on foot (14.3% for the Ward), compared to the District average (5.9%);
- based on the 2010 Indices of Deprivation there is a variation between levels of deprivation between the 2 Lower Super Output Areas (LSOAs) within the Ward, with one LSOA having higher levels of deprivation for all domains except the Living Environment domain;
- the rate of burglary within Beaconsfield Police Neighbourhood area (10.59 per 1000 population) has seen a significant decrease from the previous year from 106 burglaries in 2009/10 to 50 burglaries in 2010/11 and is lower than the District average (16.41 per 1000 population).

## Population

### Age structure

Source: Office of National Statistics—mid year population estimates 2009 ward & district level

In 2009 the population of Beaconsfield South Ward was 3,619 with males making up 49.0% of the population and females making up 51.0%. The age breakdown of the Ward's population is shown in the table below.

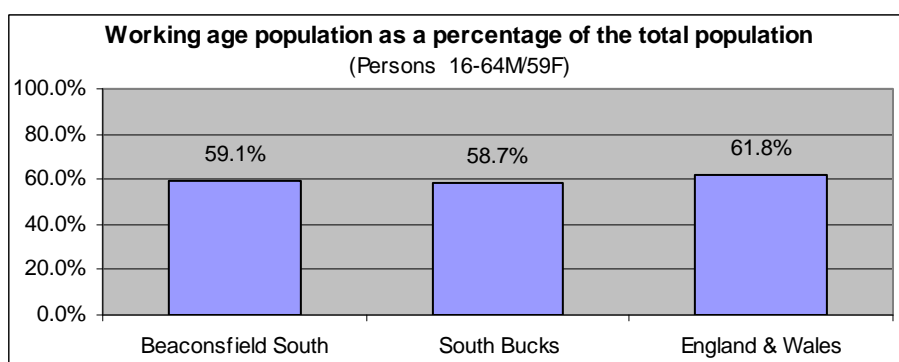
	Total	0-4	5-14	15-19	20-44	45-64	65+
Beaconsfield South	3,619	8.8%	12.8%	4.3%	36.3%	22.2%	15.5%
South Bucks	66,600	5.7%	12.5%	5.7%	29.7%	27.9%	18.3%
England & Wales	-	6.1%	11.3%	6.4%	34.5%	25.3%	16.4%

- There were 939 people within the 0-19 age group living within the Ward which contributes 25.9% to the population of Beaconsfield South; this is 2% higher than the average of 23.9% for South Bucks.
- The 65 and over age group make up 15.5% of the Ward this is lower than the average of 18.3% for South Bucks and 0.9% lower than the England & Wales average.
- There was a 7.2% increase in population in the ward from 2005-2009 based on mid year estimates, 2.5% higher than the average increase for South Bucks of 4.7%.

### Working Age Population

Source: Office of National Statistics—2010 Ward Population Estimates, mid-2009 (experimental statistics) - working age

Based on mid-2009 estimates the working age population makes up 59.1% of the population of Beaconsfield South, this is slightly higher than the average for South Bucks but 2.7% lower than the average for England & Wales.



### Population Projections

Source: 2008-based sub national population projections, Office for National Statistics/Bucks Strategic Partnership (BSP) population projections October 2010

National population projections are not available at ward level but based on the latest national population projections South Bucks District is predicted to have a population increase of 25.9% over the next 25 years from 65,700 to 82,700 in 2033. The projections are trend based which means assumptions for future levels of births, deaths and migration are based on observed levels (they do not take into account any future policy changes that have not yet occurred). Within these figures based on projections for the district from 2008 to 2033:

- the 0-19 age group is predicted to rise by 20.1% (England 10.4%);
- the 20-64 age group by 15.5% (England 8.3%); and
- the 65+ age group by 63.9% (England 65.3%).

Local population projections at district and ward level (commissioned by Bucks CC) have been produced which take account of additional datasets including housing provision in the area and other local inputs. These put the population at 67,550 in 2026 (a difference of over 11,000 from the national projections for 2026). The projections cover a different time period and the age group breakdown is different. The significant variances between the projections means caution needs to be applied when using these figures as a realistic figure is more likely to fall somewhere between the two predictions (further information about both sets of projections can be found on KnowledgeSource).

Based on the BSP projections for Beaconsfield South the estimated population is forecasted to rise from 3,550 in 2009 to 4,450 in 2026 an increase of 25.4%. Looking at a split down by age group based on projections for the ward from 2009 to 2026:

- the 0-17 age group is predicted to rise from 900 to 1,100 (22.2%)
- 18—retired\* age group is predicted to rise from 2,000 to 2,450 (22.5%)
- retired\* + age group is predicted to rise from 650 to 850 (30.8%)

(\*retired is 60 for females and 65 for males)

## Population Density

Source: Table UV02, ONS, Census 2001

The number of persons per hectare in Beaconsfield South based on the 2001 Census information was 3.6, this is lower than the average of 4.38 for South Bucks but slightly higher than the average of 3.45 for England and Wales.

## Ethnicity

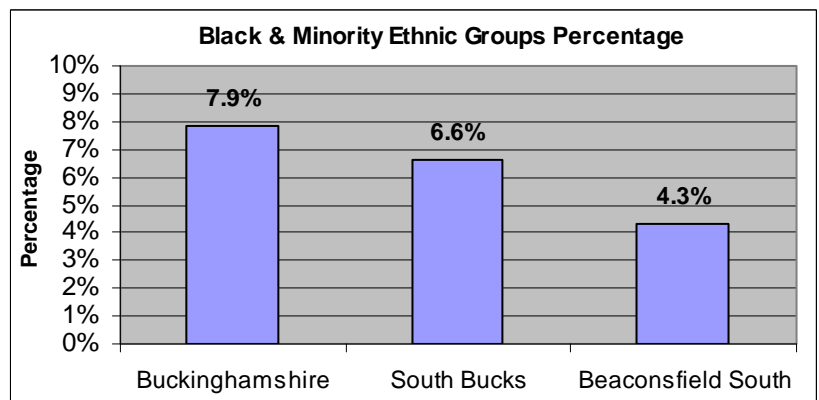
Source: Table KS06 & UV08, Census 2001/ Nomisweb standard tables, ONS.

Resident Population Estimates by Ethnic Group (experimental), 2009, Office for National Statistics.

Based on 2001 Census information 88.4% of the population of Beaconsfield South Ward stated their ethnicity as White British; this is higher than the 86.5% average for South Bucks. 5.8% of the population of the Ward declare their ethnicity as Other-White, slightly higher than the 5.1% average for South Bucks.

There are 4.3% of the population who are from Black & Minority Ethnic (BME) Groups this is lower than the 6.6% average for South Bucks. This is split down into the following BME Groups.

BME mix	Percentage
Mixed	0.9%
Asian or Asian British	2.1%
Black or Black British	0.4%
Chinese or other ethnic group	0.9%



The BME groups tend to be higher in the younger age group as the split below shows:

- For the 0-19 age group 7.3% of the population are from BME Groups (10.2% South Bucks average)
- For the 20-64 age group 3.6% of the population are from BME groups (6.7% South Bucks average)
- For the 65 and over age group 0.0% of the population are from BME groups (1.5% South Bucks average)

Looking at the change from the 1991 to 2001 Census for South Bucks District, 3.3% identified with one of the non-white ethnic categories in 1991 compared to 6.6% in 2001, an increase of 3.3%. Based on experimental population estimates for 2009 13.1% of the population in South Bucks were from a non-white ethnic group.

12.1% of the population of Beaconsfield South were born outside of the UK which is close to the District average of 12.2%. The Ward population born outside the UK are predominantly from other Western European countries (3.8%), Asia (2.3%), Africa (1.8%) and North America (1.8%).

## Religion

Source: Table KS07, ONS, Census 2001

Based on 2001 Census information 77.5% of the population of Beaconsfield South Ward stated their religion as Christianity; this is higher than the 75.6% average for South Bucks. 13.9% stated that they had no religion which is 1.4% higher than the South Bucks average.

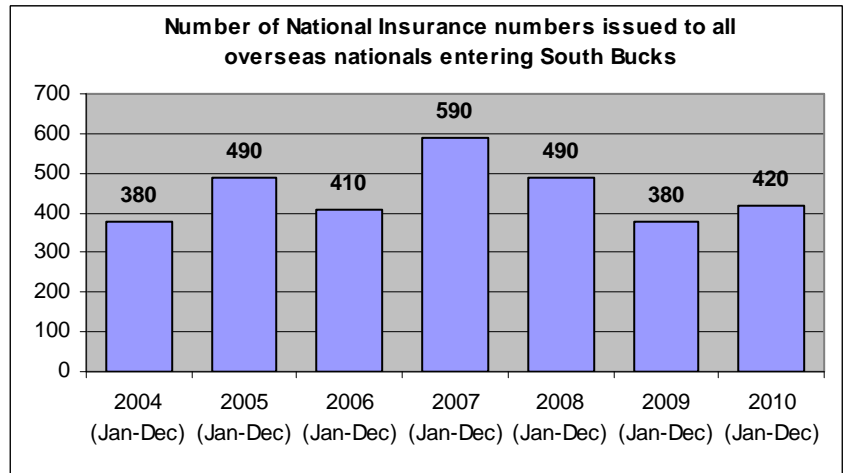
People stating religion as:	Beaconsfield South	South Bucks	England and Wales
Christian	77.5%	75.6%	71.8%
Buddhist	0.2%	0.3%	0.3%
Hindu	1.0%	1.2%	1.1%
Jewish	0.3%	0.5%	0.5%
Muslim	0.5%	1.1%	3.0%
Sikh	0.6%	1.6%	0.6%
Other religions	0.3%	0.3%	0.3%
No religion	13.9%	12.5%	14.8%
Religion not stated	5.8%	6.9%	7.7%

## Migrant Workers

Source: DWP 2010, Local Area Migration Indicators table from Office of National Statistics

Overseas nationals obtain a National Insurance (NI) Number before they enter into employment or upon starting work, so registrations data can be a good indication of new arrivals who are economically active. (Some foreign nationals do obtain a NI number but do not take up employment e.g. refugees will need an NI number but will not all be economically active.)

These figures are only available at district level and do not go down to ward level.



The top 6 nationalities for overseas nationals who are issued a National Insurance number entering South Bucks in 2010 were Poland, India, Australia, Germany, Italy and Spain.

## **Environment**

### Land Use Statistics

Source: Generalised Land Use Database Statistics 2005, Communities and Local Government (last updated Jan-07)

The following data is taken from experimental statistics from January 2005 from the generalised land use database. The total area of all land types for Beaconsfield South is 846.3 hectares which makes up 6.0% of the land in the District. The main type of land use is greenspace and makes up 84.2% of the land use for the Ward. Communities and Local Government consider the 2005 figures to be the definitive land use statistics. No further work is planned on the Generalised Land Use Database.

Type of land use	Hectares	% of ward area that land use type makes up	% of district that land use type makes up
Area of Domestic Buildings	12.6	1.5%	1.7%
Area of Non Domestic Buildings	6.6	0.8%	0.8%
Area of Road	40.1	4.7%	4.2%
Area of Path	1.4	0.2%	0.2%
Area of Rail	1.3	0.2%	0.2%
Area of Domestic Gardens	59.8	7.1%	11.2%
Area of Greenspace	712.7	84.2%	77.5%
Area of Water	3.5	0.4%	2.0%
Area of Other Land Uses	8.3	1.0%	2.2%
Area of Unclassified Land	0.0	0.0%	0.0%

Based on figures from the Council's 2009/10 Annual Monitoring Report for Beaconsfield Parish there were:

- 402.8 hectares of land designated as Areas of Outstanding Beauty (Statutory designation by Natural England)
- 352.8 hectares of land designated as Area of Attractive Landscape (designation by Bucks CC)
- 2 conservation areas within Beaconsfield Parish and 177 listed buildings

## Housing

### Household Tenure

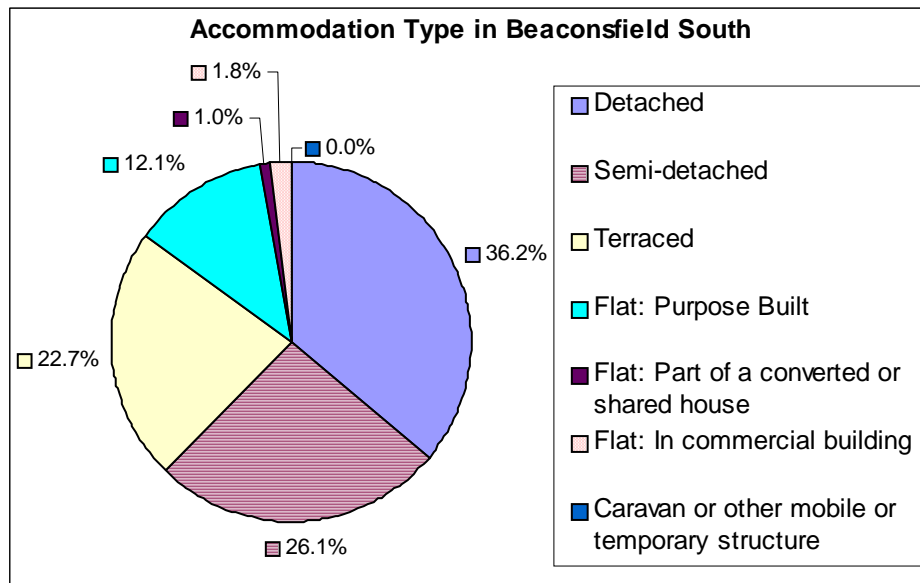
Source: Table KS18, ONS, Census 2001

Within Beaconsfield South owner occupied housing makes up 64.0% of the household tenure within the Ward, this is 14% lower than the average for South Bucks and 4.9% lower than the England average. There is a higher percentage of social rented and private rented housing than the District average.

Household Tenure	Beaconsfield South	South Bucks	England & Wales
Owner Occupied	64.0%	78.0%	68.9%
Social Rented: Council/ Housing Association/ Registered Social Landlord	15.9%	12.6%	19.2%
Private Rented: Private landlord or letting agency	11.4%	6.1%	8.7%
Other	8.8%	3.3%	3.2%

### Accommodation Type

Source: Table KS16, ONS, Census 2001



Based on the 2001 Census there were 1369 households in Beaconsfield South, 95% of these were lived in and 5% were either vacant or used as a second residence or holiday accommodation.

36% of the accommodation within Beaconsfield South is detached housing which is 6.7% lower than the District average of 42.9% but is over 13% higher than the England and Wales average of 22.8%. Within the Ward there is 22.7% of terraced housing which is higher than the District average of 14%.

### Household Composition

Source: Table KS20, ONS, Census 2001

The table below shows the household composition in 2001 for Beaconsfield South compared to the average for the District. The main difference to the District average is there is a higher percentage of single non-pensionable households (3.4% higher) and a lower percentage of married couple households with children (2.2% lower).

⇒ There were 42 lone parent households with dependent children.

Household Composition	Beaconsfield South (Number)	Beaconsfield South (%)	South Bucks District average (%)	Difference
Single non-pensionable households	198	15.2%	11.7%	3.4%
Single pensioner	222	17.0%	14.3%	2.7%
All other pensioner households	137	10.5%	11.9%	-1.4%
Married couple households: No children	167	12.8%	14.9%	-2.1%
Married couple households: With children	345	26.4%	28.6%	-2.2%
Cohabiting couple households: No children	62	4.8%	4.1%	0.6%
Cohabiting couple households: With children	37	2.8%	2.6%	0.2%
Lone parent households: With dependent children	42	3.2%	3.3%	-0.1%
Lone parent households: All children non-dependent	41	3.1%	2.8%	0.3%
Student households	3	0.2%	0.0%	0.2%
Other households: With dependent children	15	1.1%	2.3%	-1.1%
Other households: Other	36	2.8%	3.3%	-0.6%

## Council Tax Banding

Source: Valuation list for the authority on 4th Oct 2010

Council tax information can provide an overview of house value within an area, however whilst they provide an overview it should be noted that these bandings were created several years ago. This information is only available at a parish level rather than by ward. The percentage of houses falling in the G-H bands (the higher council tax bands) for Beaconsfield Parish is 10.9% higher than the District average.

Parish	Dwelling Count	Bands A-C	Bands D-F	Bands G-H
Beaconsfield	4,917	13.9%	43.6%	42.5%
South Bucks District	27,628	17.6%	50.8%	31.6%

## House prices

Source: DCLG tables from Land Registry data—2010

The average house price in 2010 in South Bucks based on house sales was £536k over 47% higher than the average for Buckinghamshire. The average for Chiltern was £457,202, Wycombe was £338,294 and Aylesbury Vale was £273,022.

## Acorn Data

Source: Acorn Data 2010, produced by CACI.

Acorn Data provides useful data about the characteristics of people based on the postcode in which they live. Using data from a range of sources, every postcode is classified into one of 5 categories, which split down into further groups. This data provides useful information to start to understand the feelings, behaviours and expectations of each group. N.B All category names are already defined on the database.

Area	Wealthy Achievers	Urban Prosperity	Comfortably Off	Moderate Means	Hard Pressed	No Classification
Beaconsfield South	44.5%	22.7%	24.5%	0.9%	2.7%	4.5%
South Bucks	60.3%	10.9%	21.6%	2.1%	3.8%	1.3%

Looking at the five main categories it shows that Beaconsfield South has a higher percentage of households falling into the Urban Prosperity category than the District average by 11.8%. The tables below provide a detailed split down into smaller groupings which provide an idea of the type of households within each category.

Category 1 - Wealthy Achievers	Ward %	District %
Wealthy Mature Professionals	17.2%	24.2%
Villages with Wealthy Commuters	9.1%	14.4%
Well Off Managers	0.9%	4.8%
Affluent Greys	3.6%	6.7%
Flourishing Families	13.6%	10.3%

Category 2 - Urban Prosperity	Ward %	District %
Urban Professionals	22.7%	10.9%

Category 3 - Comfortably Off	Ward %	District %
Secure Families	8.2%	13.3%
Settled Suburbia//Prudent Pensioners	16.4%	8.4%

Category 4 - Moderate Means	Ward %	District %
Moderate Means	0.9%	2.1%

Category 5 - Urban Prosperity	Ward %	District %
Hard Pressed	2.7%	3.8%

Unclassified	Ward %	District %
Unclassified	4.5%	1.3%

The classification of urban professionals has the following characteristics. These people are more likely to be young single adults that have completed their education. They live in areas of average income, but can experience some forms of deprivation, particularly relating to crime. Their predominately urban dwellings mean that they are more likely to live close to work, or to travel by public transport. This group are interested in leisure activities and are more likely to make some lifestyle choices that affect their health.

## Employment & Education

### Economically active

Source: CAS028, ONS, Census 2001

Based on information from the 2001 Census 80.1% of the working age population within the Ward are economically active, this is 2.2% higher than the District average. The female and male breakdown shows that there is 90.4% of the male working age population who are economically active within Beaconsfield South which is 2.7% higher than the District average of 87.7%.

	Beaconsfield South	South Bucks	Great Britain
<b>Economically active (% of working age population)</b>			
All People	80.1%	77.9%	74.0%
Males	90.4%	87.7%	81.4%
Females	69.9%	68.6%	66.8%
<b>Unemployed (% of economically active)</b>			
All People	3.6%	3.0%	5.7%

3.6% of the economically active population are unemployed in Beaconsfield South which is higher than the District average.

Based on latest estimates the economically active rate for South Bucks is 76.5% and the rate for Great Britain is 76.2% (source: Annual Population Survey Jan - Dec 2010).

### Hours worked

Source: CAS029, ONS, Census 2001

The table opposite shows that 78.8% of the people in employment within the Ward work full-time hours and 21.2% work part-time hours. Looking at the split down by sex, 92.2% of males worked full time and 7.8% worked part time and 61.7% of females worked full time and 38.3% worked part time.

	Beaconsfield South	South Bucks	Great Britain
<b>Hours worked - for all people in employment</b>			
Full time	78.8%	77.4%	75.9%
Part time	21.2%	22.6%	24.1%

### Employment by Occupation

Source: CAS033, ONS, Census 2001

For the population of Beaconsfield South the top 3 occupation groups are:

- Managers and Senior Officials who make up 30.5% (South Bucks Average 25.8%)
- Associate Professional and Technical who make up 15.8% (South Bucks Average 15.4%)
- Professional who make up 14.0% (South Bucks Average 13.4%)

These 3 occupation groups contribute just over 60% of occupations for the Ward.

### Jobseeker's Allowance (JSA) Claimants

Source: ONS claimant count with rates and proportions, Nomisweb (June 2011)

Within Beaconsfield South Ward there were 36 people claiming Job Seekers Allowance based on a quarterly snapshot from June 2011. This accounts for 1.6% of the working age population which is slightly higher than the South Bucks average of 1.3% but lower than the Great Britain average of 3.7%.

### Education

Source: CAS032, ONS, Census 2001

Within Beaconsfield South 33.7% of people aged 16 to 74 have higher level qualifications which is 5.1% higher than the average for South Bucks. 24.0% have no qualifications which is slightly lower than the South Bucks average and 11.8% lower than the Great Britain average.

	Beaconsfield South (numbers)	Beaconsfield South %	South Bucks %	Great Britain %
No qualifications or level unknown <sup>1</sup>	527	24.0%	26.7%	35.8%
Lower level qualifications <sup>2</sup>	928	42.3%	44.6%	43.9%
Higher level qualifications <sup>3</sup>	739	33.7%	28.6%	20.4%

<sup>1</sup> People without any academic, vocational or professional qualification or level unknown

<sup>2</sup> Qualifications equivalent to Level 1 to 3 of the National Key Learning Targets (i.e. GCSE's, O-Levels, A-Levels, NVQ Level 1-3)

<sup>3</sup> Qualifications of Level 4 & above (i.e. first/higher degrees, NVQ Level 4 & 5, HND, HNC & other professional qualifications)

## Travel

### Distance Travelled to Work

Source: Table UV35, ONS, Census 2001

The table below shows the distance travelled to work for all people aged 16 to 74 who were in employment based on information collected in the 2001 Census.

	Beaconsfield South	South Bucks	South East	England & Wales
Works mainly at or from home	11.1%	13.1%	9.9%	9.2%
Less than 2km	22.1%	12.2%	20.4%	20.0%
2km to less than 5km	5.0%	15.3%	17.6%	20.0%
5km to less than 10km	17.2%	19.5%	15.2%	18.2%
10km to less than 20km	17.2%	16.4%	13.7%	15.2%
20km to less than 40km	18.0%	14.9%	10.3%	7.7%
40km and over	4.1%	3.3%	7.5%	4.9%
No fixed place of work	4.8%	4.9%	5.1%	4.4%
Other	0.5%	0.4%	0.3%	0.3%

Within Beaconsfield South there is a high percentage of people who work less than 2km from home which is almost 10% higher than the average for the District. The amount of people who travel between 20km to 40km to work accounts for 18.0% with a further 4.1% travelling more than 40km to work. This means that 22.1% of the Ward are travelling over 20km to work which is higher than the District and England & Wales average.

### Method of Travel to Work

Source: Table UV39, ONS, Census 2001

The table below shows the method of travel to work for the usual resident population aged 16 to 74 who were in work based on information collected in the 2001 Census.

	Beaconsfield South	South Bucks	South East	England & Wales
Driving a car or van	57.2%	65.0%	59.2%	55.2%
On foot	14.3%	5.9%	9.9%	10.0%
Works mainly at or from home	11.2%	13.1%	9.9%	9.2%
Bus, minibus or coach	1.4%	1.5%	4.4%	7.4%
Passenger in a car or van	3.4%	4.3%	5.7%	6.3%
Train	7.1%	5.8%	5.6%	4.1%
Underground, metro, light rail or tram	0.7%	1.3%	0.2%	3.0%
Bicycle	2.2%	1.5%	3.1%	2.8%
Motorcycle, scooter or moped	1.0%	0.8%	1.1%	1.1%
Other	1.6%	0.8%	0.9%	1.0%

Within Beaconsfield South Ward there is a lower percentage of people driving a car or van compared to the District average. There is a high percentage of people who travel on foot which is 8.4% higher than the District average and the highest amount compared to the other Wards in the District.

### Car and Van Ownership

Source: Table UV62, ONS, Census 2001

The table below shows that in 2001 that 15.0% of households in Beaconsfield South did not own a car or van which was a lot lower than the average for England and Wales although higher than the District average.

	Beaconsfield South	South Bucks	South East	England & Wales
No car or van	15.0%	11.1%	19.4%	26.8%
1 car or van	42.5%	36.0%	42.6%	43.8%
2 cars or vans	33.0%	38.9%	29.6%	23.5%
3 or more cars or vans	9.5%	14.0%	8.4%	5.9%

## Health

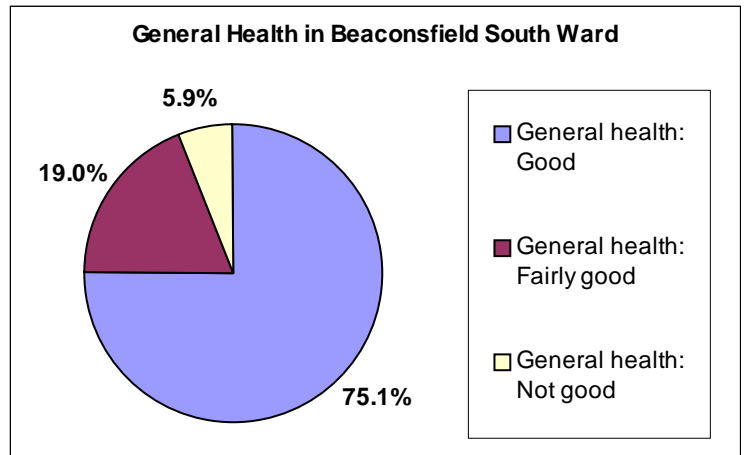
### General Health & Limiting Long-term Illness

Source: Table KS08, ONS, Census 2001

75.1% of people within Beaconsfield South declare themselves as having good health, this is similar to the average for South Bucks. The Ward percentage is 6.5% higher than the England and Wales average of 68.6% who declared they had good health.

People declaring themselves as having not good general health in the Ward is slightly higher than the average for the District but lower than the England and Wales average.

In 2001 there was an estimated 14.4% of the population of Beaconsfield South who had a limiting long-term illness which equates to 450 people, this percentage is slightly higher than the average for South Bucks of 13.1% and lower than the average for England and Wales which is 18.2%.



### Provision of Unpaid Care

Source: Table KS08, ONS, Census 2001

Within the Beaconsfield South Ward 9.3% of the population provide some form of unpaid care, this equates to 292 people. The split down of this is as follows:

- 78.1% (228 people) were providing 1-19 hours unpaid care a week
- 8.2% (24 people) were providing 20-49 hours unpaid care a week
- 13.7% (40 people) were providing 50 or more hours unpaid care a week

### Disability Living Allowance Claimants

Source: Department of Work and Pensions, August 2010

Disability Living Allowance is payable to people who are disabled and who have personal care needs, mobility needs or both. It consists of two components, the care component for people who need help with personal care and the mobility component for people who need help with getting around.

Within Beaconsfield South Ward there were 95 people claiming Disability Living Allowance based on figures from August 2010 which accounted for about 5.7% of the total claimants for South Bucks. The age breakdown of claimants is shown in the table opposite. 45 of the claimants were male and 50 were female.

Of the people claiming disability living allowance:

- 5 had a claim duration for less than 12 months,
- 5 had a claim duration for between 1 & 2 years,
- 20 had a claim duration which was between 2 & 5 years
- 65 had a claim duration which was 5 years and over

Claimants Age	Count of Claimants
Claimants Aged Under 16	15
Claimants Aged 16-24	5
Claimants Aged 25-49	20
Claimants Aged 50-59	25
Claimants Aged 60-69	20
Claimants Aged 70 and Over	10

Incapacity Benefit/Severe Disablement Allowance is a benefit provided to people due to them being incapable of work through illness or disability. This includes Sickness/Invalidity Benefit and Severe Disablement and Incapacity Benefit. Within the Beaconsfield South Ward there were 60 people claiming this type of benefit, 55 of which were Incapacity Benefit Claimants and 5 of which were severe Disablement Allowance Claimants.

Data has been rounded to base 5 for all figures in order to protect small counts.

## Deprivation

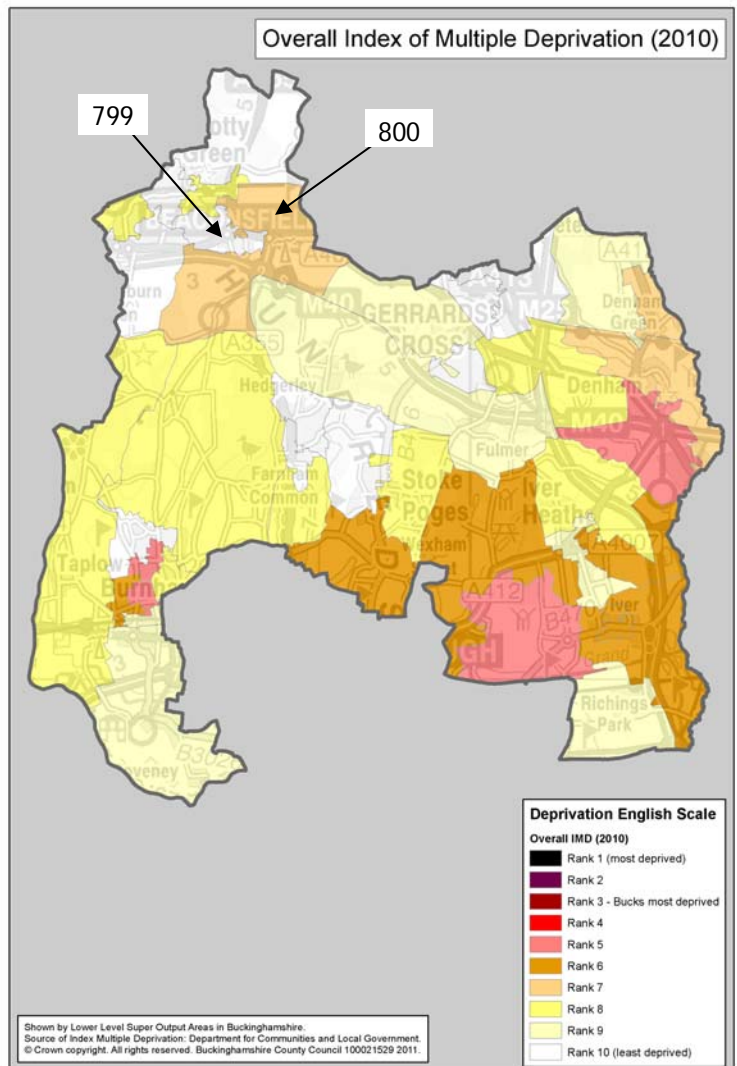
Source: *Indices of Multiple Deprivation 2007, CLG.*

The Indices of Multiple Deprivation 2010 (IMD 2010) is a measure of deprivation at the small area level—Lower Super Output Area (LSOA). England is split into 32,482 LSOAs, LSOAs have a minimum population of 1000, and overall average population of 1500, and were ranked to create the IMD. All of the LSOAs in England are ranked, the LSOA ranked 1 by the IMD 2010 is the most deprived and the LSOA ranked 32,482 is the least deprived.

- Beaconsfield South Ward is made up of 2 LSOAs (799 & 800 —locations shown on the map).

The IMD model is based on 7 distinct dimensions of deprivation which are then given a weighting to work out an overall ranking for deprivation as the table below shows.

Domain	Weighting
Income Deprivation	22.5%
Employment Deprivation	22.5%
Health Deprivation & Disability	13.5%
Education, Skills & Training Deprivation	13.5%
Barriers to Housing and Services	9.3%
Crime & Disorder	9.3%
Living Environment Deprivation	9.3%



### The different domains

- Income Deprivation covers a range of indicators including adults and children in Income Support/ Income-Based JSA/ Pension Credit/ certain child tax credit families and Asylum seekers receiving subsistence/accommodation support.
- Employment Deprivation measures involuntary exclusion of working age population from the labour market. This includes indicators on recipients of Jobseekers Allowance, Incapacity Benefits, Severe Disablement Allowance, claimants of employment and support allowance, participants in the New Deal for under 25s, over 25s and new parents.
- Health Deprivation and Disability domain measures rates of poor health, early mortality and disability in an area and covers the entire age range, it includes indicators on years of potential life lost, comparative illness and disability ratio, proportion of adults under 60 suffering from mood or anxiety disorders and measures of acute morbidity.
- Education Skills and Training Deprivation covers two sub-domains: one relating to education deprivation for children/young people in the area, and one relating to lack of skills and qualifications among a sub-set of the working age population.
- Barriers to Housing and Services domain splits into two sub-domains: geographical barriers which looks at road distance to a GP surgery/general stores or supermarket/primary school and to a Post office; wider barriers includes issues relating to access to housing such as affordability and household overcrowding.
- Crime domain measures the rate of recorded crime for four major crime types, representing the risk of personal and material victimisation at a small area level. These include Burglary, Theft, Criminal Damage and Violence.
- Living environment deprivation comprises two sub-domains: the 'indoors' which measures the quality of housing (housing in poor condition and without central heating), and the 'outdoors' which contains two measures about air quality and road traffic accidents.

For the overall level of deprivation one of the LSOAs in Beaconsfield South (799) falls within the least deprived 7% in England, with the other LSOA (800) falling within the least deprived 35% so the level of overall deprivation experienced in the Ward is relatively low.

For each LSOA within Beaconsfield South the table below shows the rank out all the LSOAs in England, the deprivation percentage and the rank compared to the other LSOAs in the District for each domain.

Domain	LSOA	Rank out of 32,482 LSOAs in England 1 most deprived / 32,482 least deprived	Deprivation % 0 = most deprived 100 = least deprived	Rank out of LSOAs in District 1 = lowest rank 40= highest rank
Overall IMD Rank	799	30,306	93.30%	33/40
	800	21,130	65.05%	12/40
Income Deprivation	799	28,235	86.93%	25/40
	800	14,982	46.12%	3/40
Employment Deprivation	799	30,610	94.24%	24/40
	800	23,439	75.16%	8/40
Health Deprivation & Disability	799	31,434	96.77%	22/40
	800	27,281	83.99%	12/40
Education, Skills & Training Deprivation	799	31,983	98.46%	33/40
	800	26,113	80.39%	20/40
Barriers to Housing & Services	799	27,409	84.38%	39/40
	800	23,649	72.81%	32/40
Crime & Disorder	799	10,349	31.86%	26/40
	800	4,381	13.49%	8/40
Living Environment Deprivation	799	21,792	67.09%	20/40
	800	22,636	69.69%	22/40

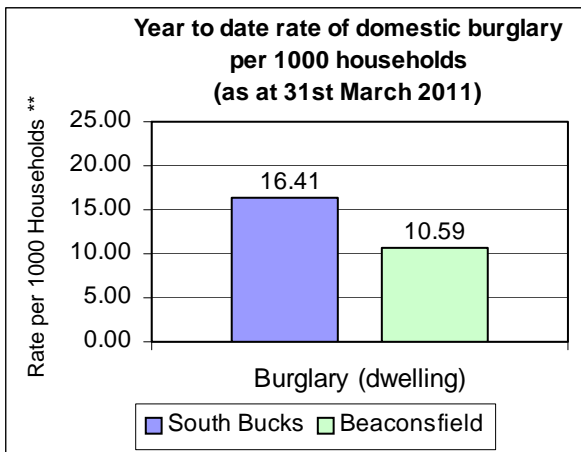
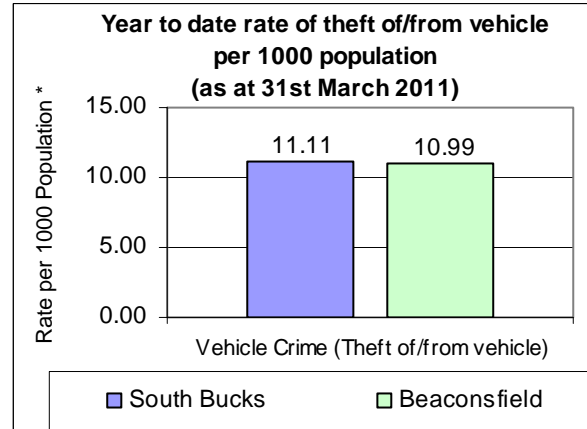
- For Income Deprivation there is clearly a difference between the LSOAs in Beaconsfield South with one of the LSOAs (799) falling within the least deprived 14% in England for Income Deprivation, the other LSOA (800) falls within the most deprived 47% for England and ranks 3/40 when compared to the other LSOAs in the District. Based on the scoring used to work out this ranking we can say that 12% of people are income deprived in LSOA 800, and looking at a further breakdown for children aged 0-15 there are 19% living in income deprived households and for older people aged 60 and over there are 17% living in income deprived households.
- For Employment Deprivation LSOA 799 falls in the least deprived 6% in England, however LSOA 800 falls in the least deprived 25% in England and ranks 8/40 when compared to the other LSOAs in the District so employment deprivation is relatively high compared to other areas in the District.
- For Health Deprivation & Disability LSOA 799 falls in the least deprived 4% in England and LSOA 800 falls within the least deprived 17% in England. For Education, Skills & Training Deprivation LSOA 799 falls in the least deprived 2% in England and LSOA 800 falls in the least deprived 20% in England.
- Barriers to Housing & Services is slightly higher for LSOA 800 which falls within the least deprived 28% in England, LSOA 799 falls within the least deprived 16% in England and for this type of deprivation is one of the least deprived LSOAs in the District ranking 39 out of 40.
- Both areas have relatively high levels of Crime and Disorder Deprivation falling in the lower half ranking of all LSOAs in the District, LSOA 799 falls in the most deprived 32% in England and LSOA 800 falls in the most deprived 14% in England.
- For Living Environment Deprivation both LSOAs in Beaconsfield South fall within the least deprived 33%.

## Crime

Source: Thames Valley Police Crime Summary for South Bucks District as at 31st March 2011

Information on crime levels is produced at the Police Neighbourhood level rather than by Ward. The information is based on year to date crime summaries produced by Thames Valley Police for the District.

The graph opposite shows that for the Beaconsfield police neighbourhood area the rate of theft of or from a vehicle per 1,000 population is just slightly lower than the average for the District. Based on the previous years reporting, vehicle crime decreased by 5.8% for Beaconsfield police neighbourhood area from 138 incidents in 2009/10 to 130 incidents in 2010/11.



The rate of domestic burglary per 1,000 households for Beaconsfield police neighbourhood area is lower than the District average. The number of domestic burglaries for the Beaconsfield police neighbourhood area has decreased from 106 in 2009/10 to 50 in 2010/11.

\* Population figures to work out the rates per 1000 population are based on the Civil Parish population estimates in South Bucks, mid-2009.

\*\* Household figures to work out the rates per 1000 households are based on the 2001 census data for Parishes and includes new housing completions per parish from 2001-2011. Data inaccuracy may occur due to boundary variations.

The table below shows the number of offences over the last three years for the Beaconsfield police neighbourhood area and the District:

Number of offences	Beaconsfield					South Bucks				
	2008/2009	2009/2010	% change	2010/2011	% change	2008/2009	2009/2010	% change	2010/2011	% change
Vehicle Crime Theft of/from vehicle)	159	138	-13.2%	130	-5.8%	1125	1003	-10.8%	740	-26.2%
Burglary (Dwelling)	76	106	39.5%	50	-52.8%	601	511	-15.0%	432	-15.5%
All Crime	1161	1035	-10.9%	881	-14.9%	6323	5809	-8.1%	4843	-16.6%

Crime statistics for the District are produced by Thames Valley Police on a monthly basis and should be used for up to date trend information. There are some differences between the neighbourhood police area figures and the overall South Bucks figures due to different timelines in producing the report and crimes that are reclassified over the reporting period.

When using this Ward Profile please note that information is taken from a variety of sources and SBDC can not vouch for its accuracy & reliability. Many statistics come from the 2001 Census so this should be taken into account when utilising these figures as these are now 10 years old.

Some of the data contained in this profile is protected by various copyrights and cannot be re-used elsewhere without permission of the relevant copyright holder (please refer to source data for more information).