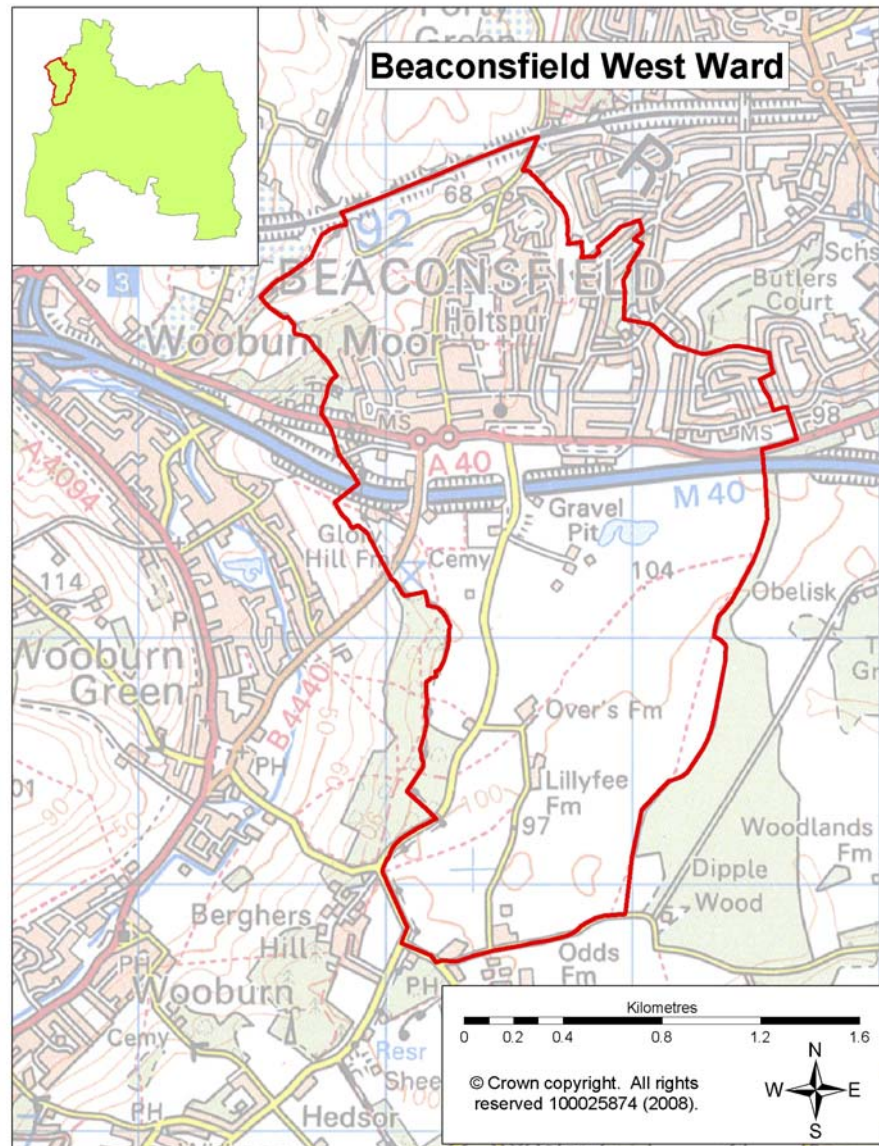


This ward profile aims to provide an overview of information about the Beaconsfield West Ward. The majority of this information is at ward level for Beaconsfield West, except for a small number of statistics which are only available at parish or district level.



## Summary of key points:

- 17.6% of the population are aged 65 and over (District average 18.3%). Based on population projections for the District this age group is predicted to increase by 20.1% by 2031 which may require changes to service provision;
- the number of persons per hectare in Beaconsfield West based on the 2001 Census information was 7.49, this is higher than the average of 4.38 for South Bucks;
- 32.9% of households within the Ward are married couple households with children (District average 28.6%);
- based on Acorn Categories 75.3% are termed 'Wealthy Achievers', 15% higher than the District average, however within the same ward there is also 7.1% of the population in the 'Hard Pressed' group, 3.3% higher than the District average and the 5th highest percentage compared to the other 19 wards in the District;
- 31% of people aged 16 to 74 have higher level qualifications, 2.4% higher than the District average and over 10% higher than the average for England and Wales;
- 22.9% travel over 20km to work which 4.7% higher than the District average;
- based on the 2010 Indices of Deprivation there is a variance between levels of deprivation across the Ward. For the Income Deprivation domain one Super Output Area (SOA) falls within the least deprived 46% in England for this type of deprivation while the other SOA within the Ward falls within the least deprived 1%.
- the rate of burglary within Beaconsfield Police Neighbourhood area (10.59 per 1000 population) has seen a significant decrease from the previous year from 106 burglaries in 2009/10 to 50 burglaries in 2010/11 and is lower than the District average (16.41 per 1000 population).

## Population

### Age structure

Source: Office of National Statistics—mid year population estimates 2009 ward & district level

In 2009 the population of Beaconsfield West Ward was 3,125 with males making up 49.2% of the population and females making up 50.8%. The age breakdown of the Ward's population is shown in the table below.

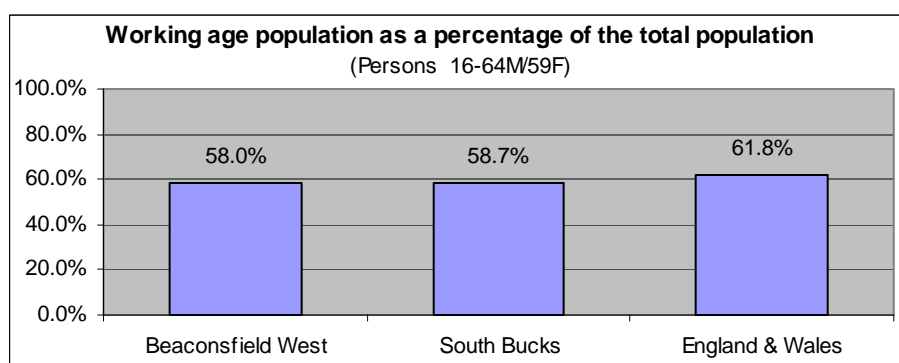
	Total	0-4	5-14	15-19	20-44	45-64	65+
Beaconsfield West	3,125	5.7%	14.4%	4.9%	28.7%	28.6%	17.6%
South Bucks	66,600	5.7%	12.5%	5.7%	29.7%	27.9%	18.3%
England & Wales	-	6.1%	11.3%	6.4%	34.5%	25.3%	16.4%

- There were 782 people within the 0-19 age group living within the Ward which contributes 25% to the population of Beaconsfield West; this is higher than the average of 23.9% for South Bucks.
- The 65 and over age group make up 17.6% of the Ward this is lower than the average of 18.3% for South Bucks but 1.2% higher than the England & Wales average.
- There was a 4.4% increase in population in the ward from 2005-2009 based on mid year estimates, slightly lower than the average increase for South Bucks of 4.7%.

### Working Age Population

Source: Office of National Statistics—2010 Ward Population Estimates, mid-2009 (experimental statistics) - working age

Based on mid-2009 estimates the working age population makes up 58.0% of the population of Beaconsfield West, this is slightly lower than the average for South Bucks and 3.8% lower than the average for England & Wales.



### Population Projections

Source: 2008-based sub national population projections, Office for National Statistics/Bucks Strategic Partnership (BSP) population projections October 2010

National population projections are not available at ward level but based on the latest national population projections South Bucks District is predicted to have a population increase of 25.9% over the next 25 years from 65,700 to 82,700 in 2033. The projections are trend based which means assumptions for future levels of births, deaths and migration are based on observed levels (they do not take into account any future policy changes that have not yet occurred). Within these figures based on projections for the district from 2008 to 2033:

- the 0-19 age group is predicted to rise by 20.1% (England 10.4%);
- the 20-64 age group by 15.5% (England 8.3%); and
- the 65+ age group by 63.9% (England 65.3%).

Local population projections at district and ward level (commissioned by Bucks CC) have been produced which take account of additional datasets including housing provision in the area and other local inputs. These put the population at 67,550 in 2026 (a difference of over 11,000 from the national projections for 2026). The projections cover a different time period and the age group breakdown is different. The significant variances between the projections means caution needs to be applied when using these figures as a realistic figure is more likely to fall somewhere between the two predictions (further information about both sets of projections can be found on KnowledgeSource).

Based on the BSP projections for Beaconsfield West the estimated population is forecasted to rise from 3,100 in 2009 to 3,200 in 2026 an increase of 3.2%. Looking at a split down by age group based on projections for the ward from 2009 to 2026:

- the 0-17 age group is predicted to stay at 700 (no change)
- 18—retired\* age group is predicted to rise from 1,700 to 1,800 (5.9%)
- retired\* + age group is predicted to rise from 600 to 650 (8.3%)

(\*retired is 60 for females and 65 for males)

## Population Density

Source: Table UV02, ONS, Census 2001

The number of persons per hectare in Beaconsfield West based on the 2001 Census information was 7.49, this is higher than the average of 4.38 for South Bucks and 3.45 for England and Wales.

## Ethnicity

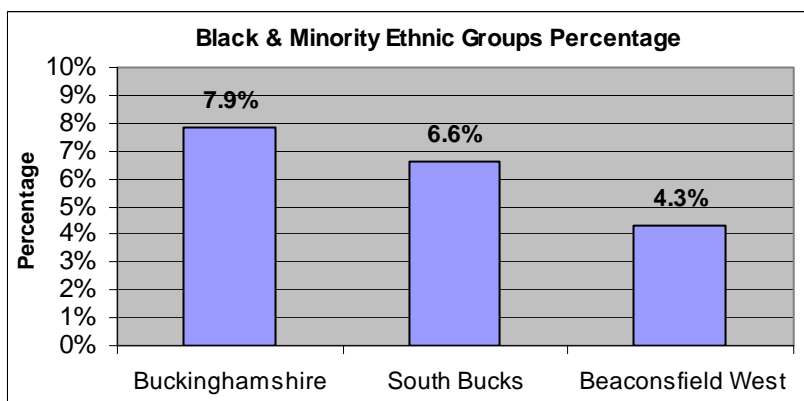
Source: Table KS06 & UV08, Census 2001/ Nomisweb standard tables, ONS.

Resident Population Estimates by Ethnic Group (experimental), 2009, Office for National Statistics.

Based on 2001 Census information 90.2% of the population of Beaconsfield West Ward stated their ethnicity as White British; this is higher than the 86.5% average for South Bucks. 3.9% of the population of the Ward declare their ethnicity as Other-White, lower than the 5.1% average for South Bucks.

There are 4.3% of the population who are from Black & Minority Ethnic (BME) Groups this is lower than the 6.6% average for South Bucks. This is split down into the following BME Groups.

BME mix	Percentage
Mixed	1.4%
Asian or Asian British	1.7%
Black or Black British	0.3%
Chinese or other ethnic group	0.9%



The BME groups tend to be higher in the younger age group as the split below shows:

- For the 0-19 age group 6.8% of the population are from BME Groups (10.2% South Bucks average)
- For the 20-64 age group 4.1% of the population are from BME groups (6.7% South Bucks average)
- For the 65 and over age group 2.7% of the population are from BME groups (1.5% South Bucks average)

Looking at the change from the 1991 to 2001 Census for South Bucks District, 3.3% identified with one of the non-white ethnic categories in 1991 compared to 6.6% in 2001, an increase of 3.3%. Based on experimental population estimates for 2009 13.1% of the population in South Bucks were from a non-white ethnic group.

9.7% of the population of Beaconsfield West were born outside of the UK which is lower than the District average of 12.2%. The Ward population born outside the UK are predominantly from other Western European countries (2.3%), Asia (2.1%) and North America (1.6%).

## Religion

Source: Table KS07, ONS, Census 2001

Based on 2001 Census information 76.3% of the population of Beaconsfield West Ward stated their religion as Christianity; this is slightly higher than the 75.6% average for South Bucks. 14% stated that they had no religion which is higher than the District average.

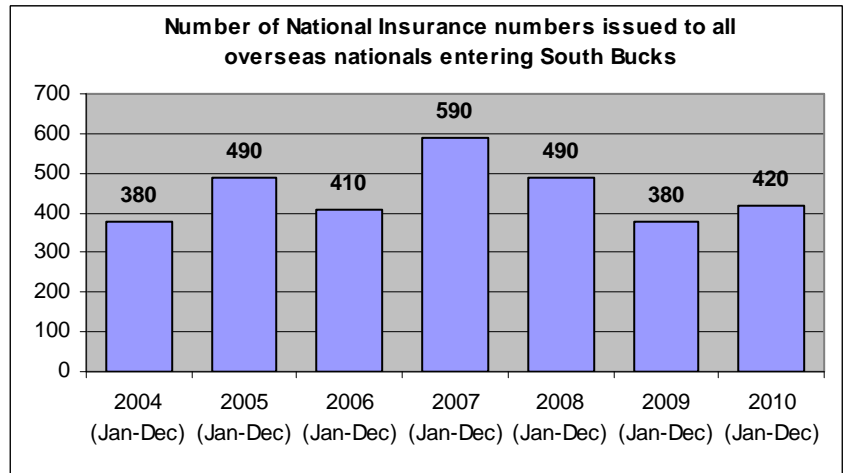
People stating religion as:	Beaconsfield West	South Bucks	England and Wales
Christian	76.3%	75.6%	71.8%
Buddhist	0.2%	0.3%	0.3%
Hindu	0.4%	1.2%	1.1%
Jewish	0.2%	0.5%	0.5%
Muslim	0.7%	1.1%	3.0%
Sikh	0.3%	1.6%	0.6%
Other religions	0.4%	0.3%	0.3%
No religion	14.0%	12.5%	14.8%
Religion not stated	7.5%	6.9%	7.7%

## Migrant Workers

Source: DWP 2010, Local Area Migration Indicators table from Office of National Statistics

Overseas nationals obtain a National Insurance (NI) Number before they enter into employment or upon starting work, so registrations data can be a good indication of new arrivals who are economically active. (Some foreign nationals do obtain a NI number but do not take up employment e.g. refugees will need an NI number but will not all be economically active.)

These figures are only available at district level and do not go down to ward level.



The top 6 nationalities for overseas nationals who are issued a National Insurance number entering South Bucks in 2010 were Poland, India, Australia, Germany, Italy and Spain.

## Environment

### Land Use Statistics

Source: Generalised Land Use Database Statistics 2005, Communities and Local Government (last updated Jan-07)

The following data is taken from experimental statistics from January 2005 from the generalised land use database. The total area of all land types for Beaconsfield West is 397 hectares which makes up 2.8% of the land in the District. The main type of land use is greenspace and makes up 70.4% of the land use for the Ward. Communities and Local Government consider the 2005 figures to be the definitive land use statistics. No further work is planned on the Generalised Land Use Database.

Type of land use	Hectares	% of ward area that land use type makes up	% of district that land use type makes up
Area of Domestic Buildings	10.5	2.7%	1.7%
Area of Non Domestic Buildings	1.1	0.3%	0.8%
Area of Road	23.4	5.9%	4.2%
Area of Path	0.7	0.2%	0.2%
Area of Rail	1.9	0.5%	0.2%
Area of Domestic Gardens	73.6	18.6%	11.2%
Area of Greenspace	279.1	70.4%	77.5%
Area of Water	3.7	0.9%	2.0%
Area of Other Land Uses	2.7	0.7%	2.2%
Area of Unclassified Land	0	0.0%	0.0%

Based on figures from the Council's 2009/10 Annual Monitoring Report for Beaconsfield Parish there were:

- 402.8 hectares of land designated as Areas of Outstanding Beauty (Statutory designation by Natural England)
- 352.8 hectares of land designated as Area of Attractive Landscape (designation by Bucks CC)
- 2 conservation areas within Beaconsfield Parish and 177 listed buildings

## Housing

### Household Tenure

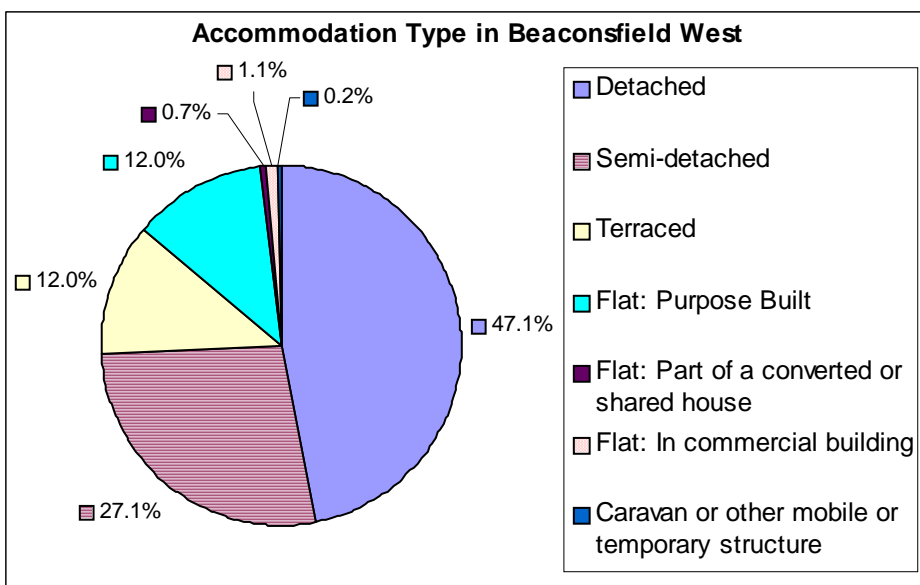
Source: Table KS18, ONS, Census 2001

Within Beaconsfield West there is a high percentage of owner occupied housing which makes up 77% of the household tenure within the Ward, this is 8.1% higher than the England average. Almost 38% of this owner occupied housing is owned outright.

Household Tenure	Beaconsfield West	South Bucks	England & Wales
Owner Occupied	77.0%	78.0%	68.9%
Social Rented: Council/Housing Association/Registered Social Landlord	16.2%	12.6%	19.2%
Private Rented: Private landlord or letting agency	4.0%	6.1%	8.7%
Other	2.8%	3.3%	3.2%

### Accommodation Type

Source: Table KS16, ONS, Census 2001



Based on the 2001 Census there were 1205 households in Beaconsfield West, 97.6% of these were lived in and 2.4% were either vacant or used as a second residence or holiday accommodation.

47.1% of the accommodation within Beaconsfield West is detached housing which is 4.2% higher than the District average of 42.9% and 24.3% higher than the England and Wales average of 22.8%. Within the Ward there is 12% of terrace housing.

### Household Composition

Source: Table KS20, ONS, Census 2001

The table below shows the household composition in 2001 for Beaconsfield West compared to the average for the District. The main difference to the District average is there is a higher percentage of married couple households with children (4.2% higher) and a lower percentage of single non-pensionable households (3.2% lower).

⇒ There were 38 lone parent households with dependent children.

Household Composition	Beaconsfield West (Number)	Beaconsfield West (%)	South Bucks District average (%)	Difference
Single non-pensionable households	101	8.6%	11.7%	-3.2%
Single pensioner	169	14.4%	14.3%	0.1%
All other pensioner households	169	14.4%	11.9%	2.5%
Married couple households: No children	162	13.8%	14.9%	-1.1%
Married couple households: With children	386	32.9%	28.6%	4.2%
Cohabiting couple households: No children	29	2.5%	4.1%	-1.6%
Cohabiting couple households: With children	26	2.2%	2.6%	-0.4%
Lone parent households: With dependent children	38	3.2%	3.3%	-0.1%
Lone parent households: All children non-dependent	40	3.4%	2.8%	0.6%
Student households	0	0.0%	0.0%	0.0%
Other households: With dependent children	30	2.6%	2.3%	0.3%
Other households: Other	25	2.1%	3.3%	-1.2%

## Council Tax Banding

Source: Valuation list for the authority on 4th Oct 2010

Council tax information can provide an overview of house value within an area, however whilst they provide an overview it should be noted that these bandings were created several years ago. This information is only available at a parish level rather than by ward. The percentage of houses falling in the G-H bands (the higher council tax bands) for Beaconsfield Parish is 10.9% higher than the District average.

Parish	Dwelling Count	Bands A-C	Bands D-F	Bands G-H
Beaconsfield	4,917	13.9%	43.6%	42.5%
South Bucks District	27,628	17.6%	50.8%	31.6%

## House prices

Source: DCLG tables from Land Registry data—2010

The average house price in 2010 in South Bucks based on house sales was £536k over 47% higher than the average for Buckinghamshire. The average for Chiltern was £457,202, Wycombe was £338,294 and Aylesbury Vale was £273,022.

## Acorn Data

Source: Acorn Data 2010, produced by CACI

Acorn Data provides useful data about the characteristics of people based on the postcode in which they live. Using data from a range of sources, every postcode is classified into one of 5 categories, which split down into further groups. This data provides useful information to start to understand the feelings, behaviours and expectations of each group. N.B All category names are already defined on the database.

Looking at the five main categories it shows that Beaconsfield West has a higher percentage of Wealthy

Area	Wealthy Achievers	Urban Prosperity	Comfortably Off	Moderate Means	Hard Pressed	No Classification
Beaconsfield West	75.3%	5.9%	10.6%	1.2%	7.1%	0.0%
South Bucks	60.3%	10.9%	21.6%	2.1%	3.8%	1.3%

Achiever households than the District average by 15%. However 7.1% of households fall within the Hard Pressed categories, 3.3% higher than the District average. The tables below provide a detailed split down into smaller groupings which provide an idea of the type of households within each category.

Category 1 - Wealthy Achievers	Ward %	District %
Wealthy Mature Professionals	30.6%	24.2%
Villages with Wealthy Commuters	14.1%	14.4%
Well Off Managers	5.9%	4.8%
Affluent Greys	1.2%	6.7%
Flourishing Families	23.5%	10.3%

Category 2 - Urban Prosperity	Ward %	District %
Urban Professionals	5.9%	10.9%

Category 3 - Comfortably Off	Ward %	District %
Secure Families	3.5%	13.3%
Settled Suburbia/Prudent Pensioners	7.1%	8.4%

Category 4 - Moderate Means	Ward %	District %
Moderate Means	1.2%	2.1%

Category 5 - Urban Prosperity	Ward %	District %
Hard Pressed	7.1%	3.8%

Unclassified	Ward %	District %
Unclassified	0.0%	1.3%

The highest percentage of people within the ward fall within the classification of Wealthy Mature Professionals which has the following characteristics. Their affluence and middle aged family profile may be linked to the importance they place on further education and secondary school education, where there is a strong engagement to attain qualifications. Public and private transport is important, with higher rates of car ownership and commuting by train/tube, but people are also more likely to work from home. People are less satisfied with transport issues than average. Interest in charity work is higher than average, as is their interest in health care, but lifestyle choices can be poor.

## Employment & Education

### Economically active

Source: CAS028, ONS, Census 2001

Based on information from the 2001 Census 78.2% of the working age population within the Ward are economically active, this is similar to the average for the District. The female breakdown shows that the Ward average is 1.4% higher than the average for the District.

	Beaconsfield West	South Bucks	Great Britain
<b>Economically active (% of working age population)</b>			
All People	78.2%	77.9%	74.0%
Males	86.4%	87.7%	81.4%
Females	70.0%	68.6%	66.8%
<b>Unemployed (% of economically active)</b>			
All People	2.5%	3.0%	5.7%

2.5% of the economically active population are unemployed in Beaconsfield West which is 0.5% lower than the District average.

Based on latest estimates the economically active rate for South Bucks is 76.5% and the rate for Great Britain is 76.2% (source: Annual Population Survey Jan - Dec 2010).

### Hours worked

Source: CAS029, ONS, Census 2001

The table opposite shows that 72.7% of the people in employment within the Ward work full-time hours and 27.3% work part-time hours. Looking at the split down by sex, 90.5% of males worked full time and 9.5% worked part time and 50.8% of females worked full time and 49.2% worked part time.

	Beaconsfield West	South Bucks	Great Britain
<b>Hours worked - for all people in employment</b>			
Full time	72.7%	77.4%	75.9%
Part time	27.3%	22.6%	24.1%

### Employment by Occupation

Source: CAS033, ONS, Census 2001

For the population of Beaconsfield West the top 3 occupation groups are:

- Managers and Senior Officials who make up 25.3% (South Bucks Average 25.8%)
- Associate Professional and Technical who make up 15.1% (South Bucks Average 15.4%)
- Professional who make up 14.3% (South Bucks Average 13.4%)

These 3 occupation groups contribute almost 55% of occupations for the Ward.

### Jobseeker's Allowance (JSA) Claimants

Source: ONS claimant count with rates and proportions, Nomisweb (June 2011)

Within Beaconsfield West Ward there were 20 people claiming Job Seekers Allowance based on a quarterly snapshot from June 2011. This accounts for 1.1% of the working age population which is slightly lower than the South Bucks average of 1.3% and lower than the Great Britain average of 3.7%.

### Education

Source: CAS032, ONS, Census 2001

Within Beaconsfield West 31% of people aged 16 to 74 have higher level qualifications which is 2.4% higher than the average for South Bucks. 25.8% have no qualifications which is slightly lower than the South Bucks average and 10% lower than the Great Britain average.

	Beaconsfield West (numbers)	Beaconsfield West %	South Bucks %	Great Britain %
No qualifications or level unknown <sup>1</sup>	551	25.8%	26.7%	35.8%
Lower level qualifications <sup>2</sup>	922	43.2%	44.6%	43.9%
Higher level qualifications <sup>3</sup>	663	31.0%	28.6%	20.4%

<sup>1</sup> People without any academic, vocational or professional qualification or level unknown

<sup>2</sup> Qualifications equivalent to Level 1 to 3 of the National Key Learning Targets (i.e. GCSE's, O-Levels, A-Levels, NVQ Level 1-3)

<sup>3</sup> Qualifications of Level 4 & above (i.e. first/higher degrees, NVQ Level 4 & 5, HND, HNC & other professional qualifications)

## Travel

### Distance Travelled to Work

Source: Table UV35, ONS, Census 2001

The table below shows the distance travelled to work for all people aged 16 to 74 who were in employment based on information collected in the 2001 Census.

	Beaconsfield West	South Bucks	South East	England & Wales
Works mainly at or from home	12.0%	13.1%	9.9%	9.2%
Less than 2km	14.6%	12.2%	20.4%	20.0%
2km to less than 5km	9.3%	15.3%	17.6%	20.0%
5km to less than 10km	21.9%	19.5%	15.2%	18.2%
10km to less than 20km	14.1%	16.4%	13.7%	15.2%
20km to less than 40km	18.1%	14.9%	10.3%	7.7%
40km and over	4.8%	3.3%	7.5%	4.9%
No fixed place of work	4.8%	4.9%	5.1%	4.4%
Other	0.4%	0.4%	0.3%	0.3%

Within Beaconsfield West 22.9% travel over 20km to work which is 4.7% higher than the average for the District.

### Method of Travel to Work

Source: Table UV39, ONS, Census 2001

The table below shows the method of travel to work for the usual resident population aged 16 to 74 who were in work based on information collected in the 2001 Census.

	Beaconsfield West	South Bucks	South East	England & Wales
Driving a car or van	67.1%	65.0%	59.2%	55.2%
On foot	4.5%	5.9%	9.9%	10.0%
Works mainly at or from home	12.0%	13.1%	9.9%	9.2%
Bus, minibus or coach	0.8%	1.5%	4.4%	7.4%
Passenger in a car or van	5.2%	4.3%	5.7%	6.3%
Train	6.4%	5.8%	5.6%	4.1%
Underground, metro, light rail or tram	0.8%	1.3%	0.2%	3.0%
Bicycle	1.3%	1.5%	3.1%	2.8%
Motorcycle, scooter or moped	0.8%	0.8%	1.1%	1.1%
Other	1.1%	0.8%	0.9%	1.0%

Within Beaconsfield West Ward there is a slightly higher percentage of people driving a car or van to work than the District average, and almost 12% higher than the average for England & Wales. The averages for the Ward are similar to the District for method of travel to work.

### Car and Van Ownership

Source: Table UV62, ONS, Census 2001

The table below shows that in 2001 that only 10% of households in Beaconsfield West did not own a car or van which was a lot lower than the average for England and Wales. The number of households who owned 2 cars or vans was 4% higher than the District average.

	Beaconsfield West	South Bucks	South East	England & Wales
No car or van	10.0%	11.1%	19.4%	26.8%
1 car or van	33.3%	36.0%	42.6%	43.8%
2 cars or vans	42.9%	38.9%	29.6%	23.5%
3 or more cars or vans	13.9%	14.0%	8.4%	5.9%

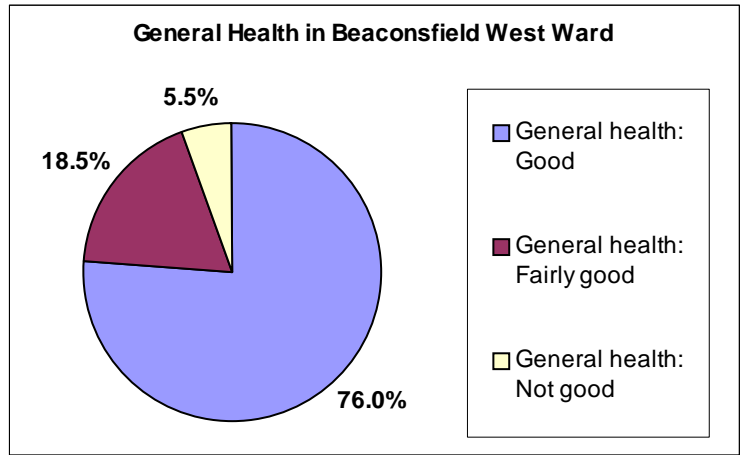
## Health

### General Health & Limiting Long-term Illness

Source: Table KS08, ONS, Census 2001

76.0% of people within Beaconsfield West declare themselves as having good health, this is slightly higher than the average for South Bucks. The Ward percentage is 7.5% higher than the England and Wales average of 68.6% who declared they had good health.

People declaring themselves as having not good general health in the Ward is lower than the average for the District and England and Wales.



In 2001 there was an estimated 12.3% of the population of Beaconsfield West who had a limiting long-term illness which equates to 368 people, this percentage is slightly lower than the average for South Bucks of 13.1% and lower than the average for England and Wales which is 18.2%.

### Provision of Unpaid Care

Source: Table KS08, ONS, Census 2001

Within the Beaconsfield West Ward 9.6% of the population provide some form of unpaid care, this equates to 287 people. The split down of this is as follows:

- 80.8% (232 people) were providing 1-19 hours unpaid care a week
- 6.6% (19 people) were providing 20-49 hours unpaid care a week
- 12.5% (36 people) were providing 50 or more hours unpaid care a week

### Disability Living Allowance Claimants

Source: Department of Work and Pensions, August 2010

Disability Living Allowance is payable to people who are disabled and who have personal care needs, mobility needs or both. It consists of two components, the care component for people who need help with personal care and the mobility component for people who need help with getting around.

Within Beaconsfield West Ward there were 65 people claiming Disability Living Allowance based on figures from August 2010 which accounted for about 3.9% of the total claimants for South Bucks. The age breakdown of claimants is shown in the table opposite. 35 of the claimants were male and 30 were female.

Claimants Age	Count of Claimants
Claimants Aged Under 16	15
Claimants Aged 16-24	5
Claimants Aged 25-49	15
Claimants Aged 50-59	5
Claimants Aged 60-69	10
Claimants Aged 70 and Over	15

Of the people claiming disability living allowance:

- 5 had a claim duration for less than 12 months,
- 5 had a claim duration for between 1 & 2 years,
- 10 had a claim duration which was between 2 & 5 years
- 45 had a claim duration which was 5 years and over

Incapacity Benefit/Severe Disablement Allowance is a benefit provided to people due to them being incapable of work through illness or disability. This includes Sickness/Invalidity Benefit and Severe Disablement and Incapacity Benefit. Within the Beaconsfield West Ward there were 20 people claiming this type of benefit, of which 20 were Incapacity Benefit Claimants and 0 severe disablement allowance claimants.

*Data has been rounded to base 5 for all figures in order to protect small counts.*

## Deprivation

Source: *Indices of Multiple Deprivation 2010, CLG.*

The Indices of Multiple Deprivation 2010 (IMD 2010) is a measure of deprivation at the small area level—Lower Super Output Area (LSOA). England is split into 32,482 LSOAs, LSOAs have a minimum population of 1000, and overall average population of 1500, and were ranked to create the IMD. All of the LSOAs in England are ranked, the LSOA ranked 1 by the IMD 2010 is the most deprived and the LSOA ranked 32,482 is the least deprived.

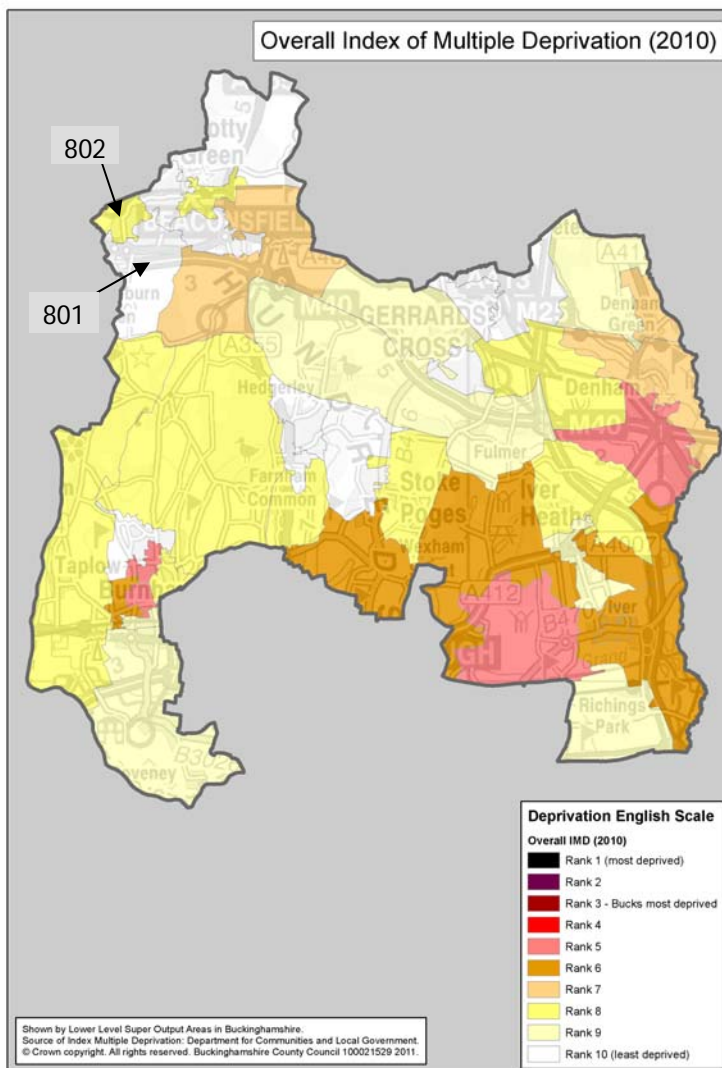
- Beaconsfield West Ward is made up of 2 LSOAs (801 & 802 —locations shown on the map).

The IMD model is based on 7 distinct dimensions of deprivation which are then given a weighting to work out an overall ranking for deprivation as the table below shows.

Domain	Weighting
Income Deprivation	22.5%
Employment Deprivation	22.5%
Health Deprivation & Disability	13.5%
Education, Skills & Training Deprivation	13.5%
Barriers to Housing and Services	9.3%
Crime & Disorder	9.3%
Living Environment Deprivation	9.3%

### The different domains

- Income Deprivation covers a range of indicators including adults and children in Income Support/ Income-Based JSA/ Pension Credit/ certain child tax credit families and Asylum seekers receiving subsistence/accommodation support.
- Employment Deprivation measures involuntary exclusion of working age population from the labour market. This includes indicators on recipients of Jobseekers Allowance, Incapacity Benefits, Severe Disablement Allowance, claimants of employment and support allowance, participants in the New Deal for under 25s, over 25s and new parents.
- Health Deprivation and Disability domain measures rates of poor health, early mortality and disability in an area and covers the entire age range, it includes indicators on years of potential life lost, comparative illness and disability ratio, proportion of adults under 60 suffering from mood or anxiety disorders and measures of acute morbidity.
- Education Skills and Training Deprivation covers two sub-domains: one relating to education deprivation for children/young people in the area, and one relating to lack of skills and qualifications among a sub-set of the working age population.
- Barriers to Housing and Services domain splits into two sub-domains: geographical barriers which looks at road distance to a GP surgery/general stores or supermarket/primary school and to a Post office; wider barriers includes issues relating to access to housing such as affordability and household overcrowding.
- Crime domain measures the rate of recorded crime for four major crime types, representing the risk of personal and material victimisation at a small area level. These include Burglary, Theft, Criminal Damage and Violence.
- Living environment deprivation comprises two sub-domains: the 'indoors' which measures the quality of housing (housing in poor condition and without central heating), and the 'outdoors' which contains two measures about air quality and road traffic accidents.



For the overall level of deprivation one of the LSOAs in Beaconsfield West (801) falls within the least deprived 6% in England, with the other LSOA (802) falling within the least deprived 17% so the level of overall deprivation experienced in the Ward is relatively low.

For each LSOA within Beaconsfield West the table below shows the rank out all the LSOAs in England, the deprivation percentage and the rank compared to the other LSOAs in the District for each domain.

Domain	SOA	Rank out of 32,482 LSOAs in England 1 most deprived / 32,482 least deprived	Deprivation % 0 = most deprived 100 = least deprived	Rank out of LSOAs in District 1 = lowest rank 40 = highest rank
Overall IMD Rank	801	30,591	94.18%	34/40
	802	23,986	73.84%	17/40
Income Deprivation	801	32,283	99.39%	38/40
	802	17,568	54.09%	9/40
Employment Deprivation	801	32,271	99.35%	39/40
	802	26,295	80.95%	13/40
Health Deprivation & Disability	801	32,082	98.77%	28/40
	802	26,221	80.72%	8/40
Education, Skills & Training Deprivation	801	31,678	97.52%	32/40
	802	18,482	56.90%	9/40
Barriers to Housing & Services	801	20,164	62.08%	27/40
	802	24,449	75.27%	34/40
Crime & Disorder	801	8,542	26.30%	22/40
	802	9,226	28.40%	24/40
Living Environment Deprivation	801	25,764	79.32%	28/40
	802	29,125	89.67%	34/40

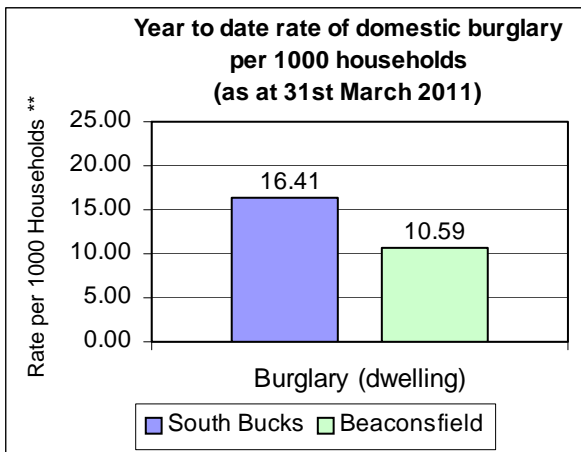
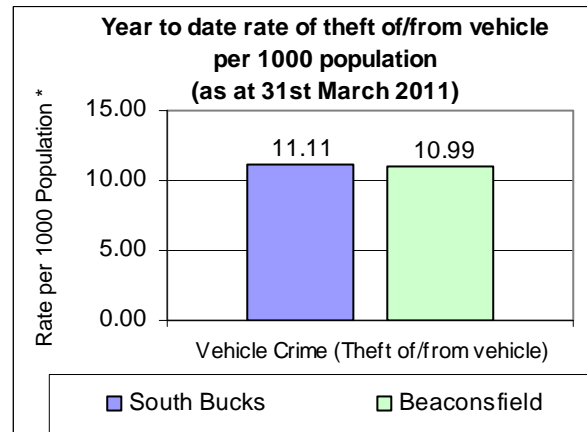
- For Income Deprivation there is clearly a difference between the LSOAs in Beaconsfield West with one of the LSOAs (801) falling within the least deprived 1% in England for Income Deprivation, the other LSOA (802) falls just outside of the lower half of all LSOAs in England within the least deprived 46% for England and ranks 9/40 when compared to the other LSOAs in the District. Based on the scoring used to work out this ranking we can say that 10% of people are income deprived in LSOA 802, and looking at a further breakdown for children aged 0-15 there is 15% living in income deprived households.
- For Employment Deprivation SOA 801 falls within the least deprived 1% in England and the other SOA 802 falls within the least deprived 20% in England. LSOA 801 in Beaconsfield West was in the least deprived 2% in England for Health Deprivation & Disability and LSOA 802 was in the least deprived 20%.
- For Education, Skills & Training Deprivation one LSOA falls within the least deprived 3% in England with the other SOA falling within the least deprived 44% in England. For Barriers to Housing & Services LSOA 801 falls within the least deprived 38% and LSOA 802 falls within the least deprived 25%.
- For Crime and Disorder SOA 801 falls within the most deprived 27% in England and SOA 802 falls in the most deprived 29% in England.
- For the Living Environment Deprivation SOA 801 falls within the least deprived 21% in England and SOA 802 falls within the least deprived 11% in England.

## Crime

Source: Thames Valley Police Crime Summary for South Bucks District as at 31st March 2011

Information on crime levels is produced at the Police Neighbourhood level rather than by Ward. The information is based on year to date crime summaries produced by Thames Valley Police for the District.

The graph opposite shows that for the Beaconsfield police neighbourhood area the rate of theft of or from a vehicle per 1,000 population is just slightly lower than the average for the District. Based on the previous years reporting, vehicle crime decreased by 5.8% for Beaconsfield police neighbourhood area from 138 incidents in 2009/10 to 130 incidents in 2010/11.



The rate of domestic burglary per 1,000 households for Beaconsfield police neighbourhood area is lower than the District average. The number of domestic burglaries for the Beaconsfield police neighbourhood area has decreased from 106 in 2009/10 to 50 in 2010/11.

\* Population figures to work out the rates per 1000 population are based on the Civil Parish population estimates in South Bucks, mid-2009.

\*\* Household figures to work out the rates per 1000 households are based on the 2001 census data for Parishes and includes new housing completions per parish from 2001-2011. Data inaccuracy may occur due to boundary variations.

The table below shows the number of offences over the last three years for the Beaconsfield police neighbourhood area and the District:

Number of offences	Beaconsfield					South Bucks				
	2008/2009	2009/2010	% change	2010/2011	% change	2008/2009	2009/2010	% change	2010/2011	% change
Vehicle Crime Theft of/from vehicle)	159	138	-13.2%	130	-5.8%	1125	1003	-10.8%	740	-26.2%
Burglary (Dwelling)	76	106	39.5%	50	-52.8%	601	511	-15.0%	432	-15.5%
All Crime	1161	1035	-10.9%	881	-14.9%	6323	5809	-8.1%	4843	-16.6%

Crime statistics for the District are produced by Thames Valley Police on a monthly basis and should be used for up to date trend information. There are some differences between the neighbourhood police area figures and the overall South Bucks figures due to different timelines in producing the report and crimes that are reclassified over the reporting period.

When using this Ward Profile please note that information is taken from a variety of sources and SBDC can not vouch for its accuracy & reliability. Many statistics come from the 2001 Census so this should be taken into account when utilising these figures as these are now 10 years old.

Some of the data contained in this profile is protected by various copyrights and cannot be re-used elsewhere without permission of the relevant copyright holder (please refer to source data for more information).