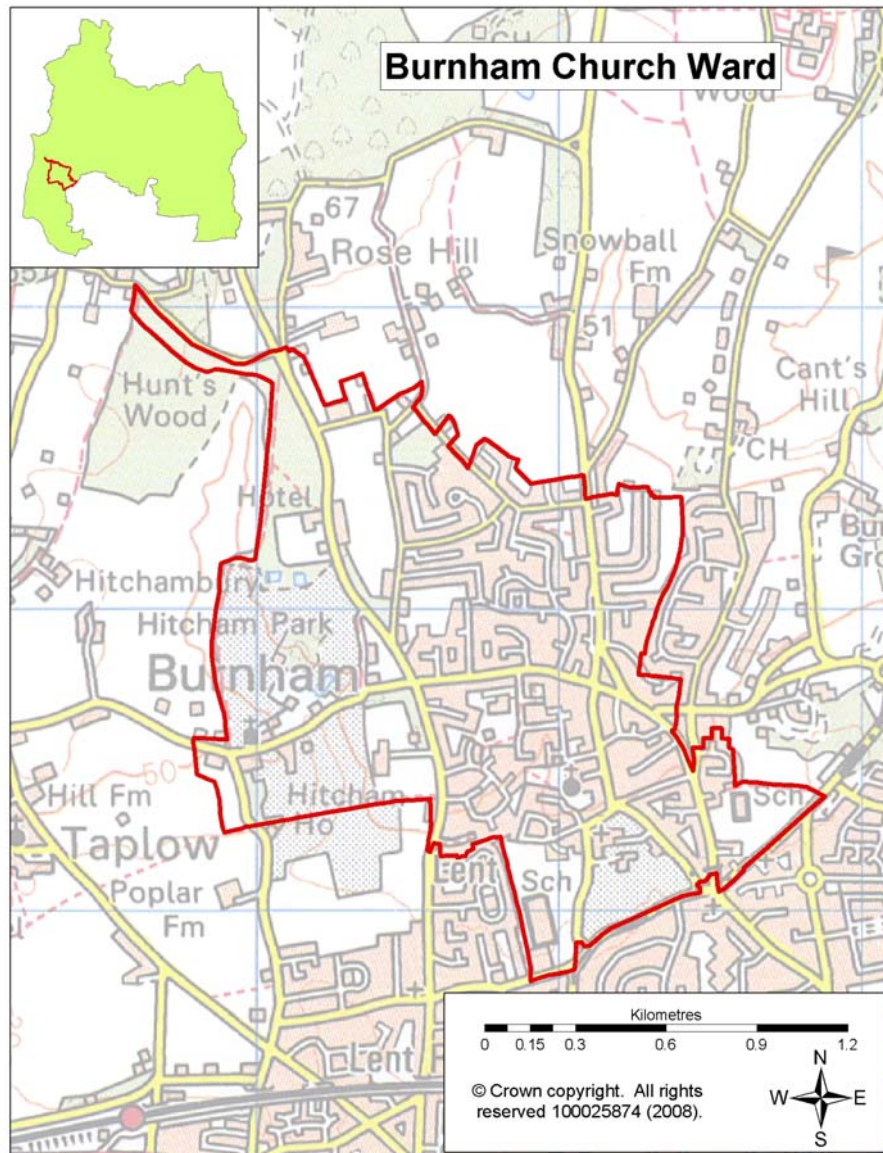


This ward profile aims to provide an overview of information about the Burnham Church Ward. The majority of this information is at ward level for Burnham Church, except for a small number of statistics which are only available at parish or district level.



Summary of key points:

- the number of persons per hectare in Burnham Church was 21.99, this is higher than the average of 4.38 for South Bucks and the second highest population density per ward compared to the other wards in the District;
- almost 19.1% of housing in the Ward was terraced housing which is 5% higher than the average for the District,
- there were 101 lone parent households with dependent children living in the Ward;
- based on Acorn categories Burnham Church has a slightly higher percentage of 'Moderate Means' and 'Hard Pressed' households than the District average by 8.3%.
- 3.4% of the economically active population are unemployed in Burnham Church which is higher than the District average of 3% and 31.2% of people aged 16 to 74 have no qualifications which is 4.5% higher than the South Bucks average;
- 32.4% of people travel less than 5km to work which is 4.9% higher than the average for the District, with fewer people travelling over 20km to work than the District average;
- in 2001 15.7% of households in Burnham Church did not own a car or van which is 4.6% higher than the District average;
- based on the 2010 Indices of Deprivation for the overall level of deprivation there are clear differences within the Ward with one of the Lower Super Output Areas (LSOAs) in Burnham Church falling within the lower half of all LSOAs in England for deprivation, whilst in the same Ward another LSOA falls within the least deprived 7% in England. One of the LSOAs in this Ward is also in the most deprived 10% in England for Crime and Disorder and is the 3rd lowest ranking compared to the 40 LSOAs in the District.
- the rate of domestic burglary per 1,000 households for the Burnham Police Neighbourhood area is slightly higher than the District average but the rate of theft of or from a vehicle is slightly lower.

Population

Age structure

Source: Office of National Statistics—mid year population estimates 2009 ward & district level

In 2009 the population of Burnham Church Ward was 5,279 with males making up 47.6% of the population and females making up 52.4%. The age breakdown of the Ward's population is shown in the table below.

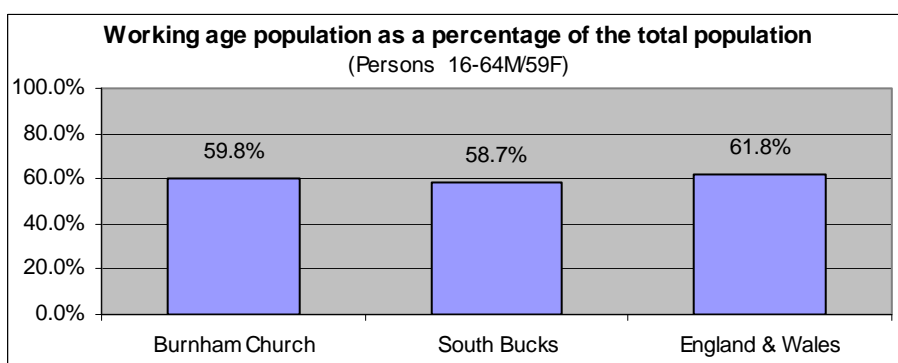
	Total	0-4	5-14	15-19	20-44	45-64	65+
Burnham Church	5,279	5.9%	12.5%	6.4%	30.4%	27.8%	17.1%
South Bucks	66,600	5.7%	12.5%	5.7%	29.7%	27.9%	18.3%
England & Wales	-	6.1%	11.3%	6.4%	34.5%	25.3%	16.4%

- There were 1305 people within the 0-19 age group living within the Ward which contributes 24.7% to the population of Burnham Church, this is higher than the average of 23.9% for South Bucks.
- The 65 and over age group make up 17.1% of the Ward, this is lower than the average of 18.3% for South Bucks but 0.7% higher than the average for England & Wales.
- There was a 3.6% increase in population in the ward from 2005-2009 based on mid year estimates, 1.1% lower than the average increase for South Bucks of 4.7%.

Working Age Population

Source: Office of National Statistics—2010
Ward Population Estimates, mid-2009
(experimental statistics) - working age

Based on mid-2009 figures the working age population makes up 59.8% of the population of Burnham Church, this is 1.1% higher than the average for South Bucks but 2.0% lower than the average for England & Wales.



Population Projections

Source: 2008-based sub national population projections, Office for National Statistics/Bucks Strategic Partnership (BSP)
population projections October 2010

National population projections are not available at ward level but based on the latest national population projections South Bucks District is predicted to have a population increase of 25.9% over the next 25 years from 65,700 to 82,700 in 2033. The projections are trend based which means assumptions for future levels of births, deaths and migration are based on observed levels (they do not take into account any future policy changes that have not yet occurred). Within these figures based on projections for the district from 2008 to 2033:

- the 0-19 age group is predicted to rise by 20.1% (England 10.4%);
- the 20-64 age group by 15.5% (England 8.3%); and
- the 65+ age group by 63.9% (England 65.3%).

Local population projections at district and ward level (commissioned by Bucks CC) have been produced which take account of additional datasets including housing provision in the area and other local inputs. These put the population at 67,550 in 2026 (a difference of over 11,000 from the national projections for 2026). The projections cover a different time period and the age group breakdown is different. The significant variances between the projections means caution needs to be applied when using these figures as a realistic figure is more likely to fall somewhere between the two predictions (further information about both sets of projections can be found on KnowledgeSource).

Based on the BSP projections for Burnham Church the estimated population is forecasted to rise from 5,150 in 2009 to 4,950 in 2026 a decrease of 3.9%. Looking at a split down by age group based on projections for the ward from 2009 to 2026:

- the 0-17 age group is predicted to decrease from 1,150 to 1,000 (-13%)
- 18—retired* age group is predicted to decrease from 2,950 to 2,550 (-13.6%)
- retired* + age group is predicted to rise from 1,050 to 1,400 (33.3%)

(*retired is 60 for females and 65 for males)

Population Density

Source: Table UV02, ONS, Census 2001

The number of persons per hectare in Burnham Church based on the 2001 Census information was 21.99, this is higher than the average of 4.38 for South Bucks and 3.45 for England and Wales and the second highest population density per ward compared to the other wards in the District.

Ethnicity

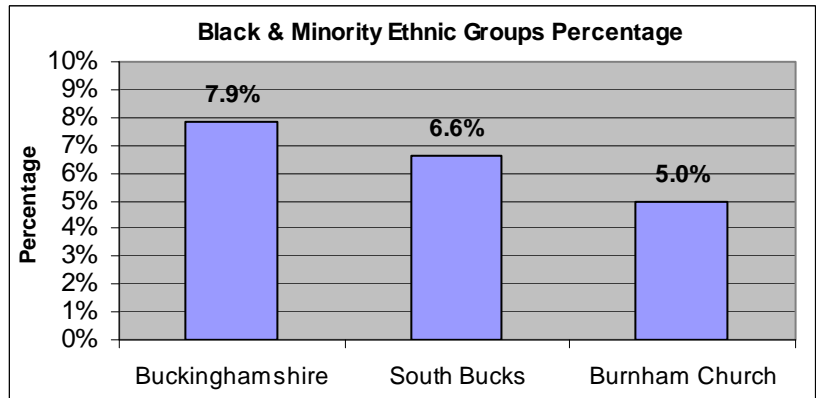
Source: Table KS06 & UV08, Census 2001/ Nomisweb standard tables, ONS.

Resident Population Estimates by Ethnic Group (experimental), 2009, Office for National Statistics.

Based on 2001 Census information 89.3% of the population of Burnham Church Ward stated their ethnicity as White British; this is higher than the 86.5% average for South Bucks. 3.8% of the population of the Ward declare their ethnicity as Other-White, lower than the 5.1% average for South Bucks.

There are 5.0% of the population who are from Black & Minority Ethnic (BME) Groups this is lower than the 6.6% average for South Bucks. This is split down into the following BME Groups.

BME mix	Percentage
Mixed	1.3%
Asian or Asian British	2.4%
Black or Black British	0.5%
Chinese or other ethnic group	0.8%



The BME groups tend to be higher in the younger age group as the split below shows:

- For the 0-19 age group 8.9% of the population are from BME Groups (10.2% South Bucks average)
- For the 20-64 age group 5.0% of the population are from BME groups (6.7% South Bucks average)
- For the 65 and over age group 0.7% of the population are from BME groups (1.5% South Bucks average)

Looking at the change from the 1991 to 2001 Census for South Bucks District, 3.3% identified with one of the non-white ethnic categories in 1991 compared to 6.6% in 2001, an increase of 3.3%. Based on experimental population estimates for 2009 13.1% of the population in South Bucks were from a non-white ethnic group.

9% of the population of Burnham Church were born outside of the UK which is lower than the District average of 12.2%. The Ward population born outside the UK are predominantly from other Western European countries (2.2%), Asia (1.9%) and North America (1.5%).

Religion

Source: Table KS07, ONS, Census 2001

Based on 2001 Census information 76.7% of the population of Burnham Church Ward stated their religion as Christianity; this is slightly higher than the 75.6% average for South Bucks. 13.3% stated that they had no religion which is 1.5% lower than the average for England & Wales.

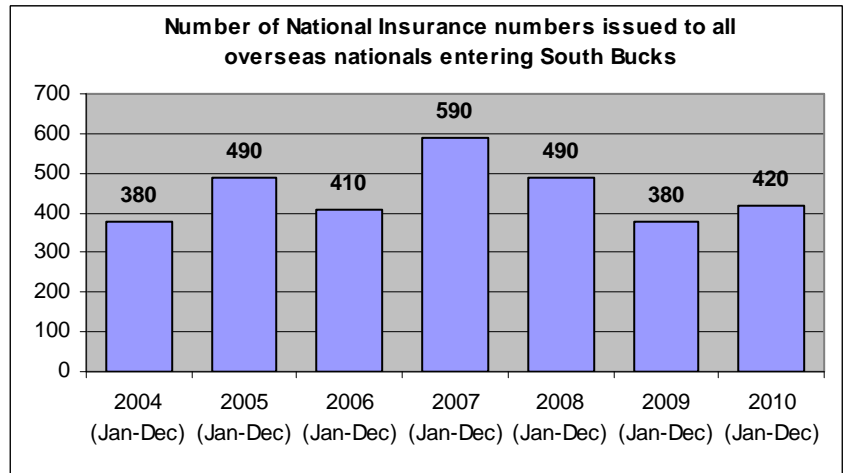
People stating religion as:	Burnham Church	South Bucks	England and Wales
Christian	76.7%	75.6%	71.8%
Buddhist	0.3%	0.3%	0.3%
Hindu	0.8%	1.2%	1.1%
Jewish	0.2%	0.5%	0.5%
Muslim	1.1%	1.1%	3.0%
Sikh	0.6%	1.6%	0.6%
Other religions	0.2%	0.3%	0.3%
No religion	13.3%	12.5%	14.8%
Religion not stated	6.9%	6.9%	7.7%

Migrant Workers

Source: DWP 2010, Local Area Migration Indicators table from Office of National Statistics

Overseas nationals obtain a National Insurance (NI) Number before they enter into employment or upon starting work, so registrations data can be a good indication of new arrivals who are economically active. (Some foreign nationals do obtain a NI number but do not take up employment e.g. refugees will need an NI number but will not all be economically active.)

These figures are only available at district level and do not go down to ward level.



The top 6 nationalities for overseas nationals who are issued a National Insurance number entering South Bucks in 2010 were Poland, India, Australia, Germany, Italy and Spain.

Environment

Land Use Statistics

Source: Generalised Land Use Database Statistics 2005, Communities and Local Government (last updated Jan-07)

The following data is taken from experimental statistics from January 2005 from the generalised land use database. The total area of all land types for Burnham Church is 223 hectares which makes up 1.6% of the land in the District. The main type of land use is greenspace and makes up 45.2% of the land use for the Ward, this is lower than the District average for this type of land use of 77.5%. Communities and Local Government consider the 2005 figures to be the definitive land use statistics. No further work is planned on the Generalised Land Use Database.

Type of land use	Hectares	% of ward area that land use type makes up	% of district that land use type makes up
Area of Domestic Buildings	14.9	6.7%	1.7%
Area of Non Domestic Buildings	4.7	2.1%	0.8%
Area of Road	19.5	8.7%	4.2%
Area of Path	1.5	0.7%	0.2%
Area of Rail	0.0	0.0%	0.2%
Area of Domestic Gardens	71.0	31.8%	11.2%
Area of Greenspace	100.9	45.2%	77.5%
Area of Water	1.1	0.5%	2.0%
Area of Other Land Uses	9.7	4.4%	2.2%
Area of Unclassified Land	0	0.0%	0.0%

Based on figures from the Council's 2009/10 Annual Monitoring Report for Burnham Parish there were:

- 1026.2 hectares of land designated as Area of Attractive Landscape (designation by Bucks CC)
- 2 conservation areas within Burnham Parish and 126 listed buildings

Housing

Household Tenure

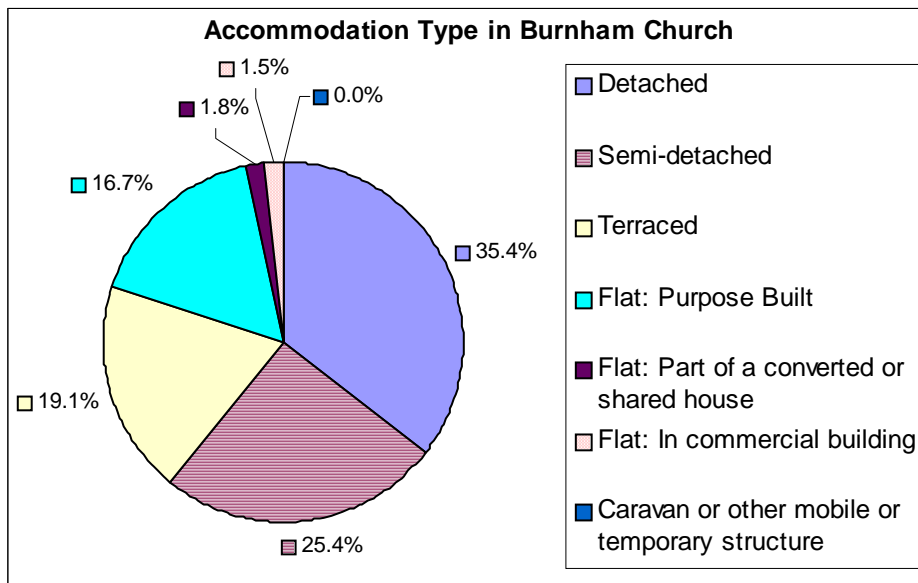
Source: Table KS18, ONS, Census 2001

Within Burnham Church Ward, owner occupied housing makes up 71.3% of the household tenure within the Ward, this is 6.7% lower than the average for South Bucks. 30.2% of this owner occupied housing is owned outright which is lower than the District average of 36.7%.

Household Tenure	Burnham Church	South Bucks	England & Wales
Owner Occupied	71.3%	78.0%	68.9%
Social Rented: Council/Housing Association/Registered Social Landlord	20.5%	12.6%	19.2%
Private Rented: Private landlord or letting agency	5.3%	6.1%	8.7%
Other	2.9%	3.3%	3.2%

Accommodation Type

Source: Table KS16, ONS, Census 2001



Based on the 2001 Census there were 2089 households in Burnham Church, 97% of these were lived in and 3% were either vacant or used as a second residence or holiday accommodation.

19.1% of housing in the Ward was terraced housing which is 5% higher than the average for the District. There was 35.4% of detached housing which is 7.5% lower than the District average.

Household Composition

Source: Table KS20, ONS, Census 2001

The table below shows the household composition in 2001 for Burnham Church compared to the average for the District. The main difference to the District average is there is a lower percentage of married couples households than the District Average and there is a higher amount of lone parent households with dependent children (1.7% higher).

⇒ There were 101 lone parent households with dependent children.

Household Composition	Burnham Church (Number)	Burnham Church (%)	South Bucks District average (%)	Difference
Single non-pensionable households	259	12.8%	11.7%	1.0%
Single pensioner	281	13.9%	14.3%	-0.4%
All other pensioner households	228	11.2%	11.9%	-0.7%
Married couple households: No children	276	13.6%	14.9%	-1.2%
Married couple households: With children	549	27.1%	28.6%	-1.6%
Cohabiting couple households: No children	100	4.9%	4.1%	0.8%
Cohabiting couple households: With children	61	3.0%	2.6%	0.4%
Lone parent households: With dependent children	101	5.0%	3.3%	1.7%
Lone parent households: All children non-dependent	66	3.3%	2.8%	0.4%
Student households	0	0.0%	0.0%	0.0%
Other households: With dependent children	33	1.6%	2.3%	-0.6%
Other households: Other	73	3.6%	3.3%	0.3%

Council Tax Banding

Source: Valuation list for the authority on 4th Oct 2010

Council tax information can provide an overview of house value within an area, however whilst they provide an overview it should be noted that these bandings were created several years ago. This information is only available at a parish level rather than by ward. The percentage of houses falling in the A-C bands (the lower council tax bands) for Burnham Parish is 6.3% higher than the District average.

Parish	Dwelling Count	Bands A-C	Bands D-F	Bands G-H
Burnham	4898	23.9%	61.6%	14.5%
South Bucks District	27,628	17.6%	50.8%	31.6%

House prices

Source: DCLG tables from Land Registry data—2010

The average house price in 2010 in South Bucks based on house sales was £536k over 47% higher than the average for Buckinghamshire. The average for Chiltern was £457,202, Wycombe was £338,294 and Aylesbury Vale was £273,022.

Acorn Data

Source: Acorn Data 2010, produced by CACI

Acorn Data provides useful data about the characteristics of people based on the postcode in which they live. Using data from a range of sources, every postcode is classified into one of 5 categories, which split down into further groups. This data provides useful information to start to understand the feelings, behaviours and expectations of each group. N.B All category names are already defined on the database.

Area	Wealthy Achievers	Urban Prosperity	Comfortably Off	Moderate Means	Hard Pressed	No Classification
Burnham Church	53.2%	14.3%	18.2%	5.8%	8.4%	0.0%
South Bucks	60.3%	10.9%	21.6%	2.1%	3.8%	1.3%

Looking at the five main categories it shows that Burnham Church has a higher percentage of 'Moderate Means' households and 'Hard Pressed' households compared to the District average by 8.3%. The tables below provide a detailed split down into smaller groupings which provide an idea of the type of households within each category.

Category 1 - Wealthy Achievers	Ward %	District %
Wealthy Mature Professionals	9.1%	24.2%
Villages with Wealthy Commuters	6.5%	14.4%
Well Off Managers	4.5%	4.8%
Affluent Greys	16.2%	6.7%
Flourishing Families	16.9%	10.3%

Category 2 - Urban Prosperity	Ward %	District %
Urban Professionals	14.3%	10.9%

Category 3 - Comfortably Off	Ward %	District %
Secure Families	9.1%	13.3%
Settled Suburbia/Prudent Pensioners	9.1%	8.4%

Category 4 - Moderate Means	Ward %	District %
Moderate Means	5.8%	2.1%

Category 5 - Urban Prosperity	Ward %	District %
Hard Pressed	8.4%	3.8%

Unclassified	Ward %	District %
Unclassified	0.0%	1.3%

The main type of grouping in the Ward is the 'Flourishing Families' group. The characteristics of this group suggest a slightly younger age profile, this group are more likely to need and choose to use education services. Their health, lifestyle choices and leisure activities tend to mirror the Buckinghamshire average. Income levels are slightly higher than average and overall deprivation is relatively low. Private transport and a variety of other modes of transport are important including car sharing.

Employment & Education

Economically active

Source: CAS028, ONS, Census 2001

Based on information from the 2001 Census 79.2% of the working age population within the Ward are economically active, this is 1.3% higher than the average of 77.9% for the District. The female and male breakdown shows that there is 71.6% of the female working age population who are economically active within Burnham Church which is 3% higher than the District average of 68.6%.

	Burnham Church	South Bucks	Great Britain
Economically active (% of working age population)			
All People	79.2%	77.9%	74.0%
Males	87.5%	87.7%	81.4%
Females	71.6%	68.6%	66.8%
Unemployed (% of economically active)			
All People	3.4%	3.0%	5.7%

3.4% of the economically active population are unemployed in Burnham Church which is higher than the District average.

Based on latest estimates the economically active rate for South Bucks is 76.5% and the rate for Great Britain is 76.2% (source: Annual Population Survey Jan - Dec 2010).

Hours worked

Source: CAS029, ONS, Census 2001

The table opposite shows that 77.9% of the people in employment within the Ward work full-time hours and 22.1% work part-time hours. Looking at the split down by sex, 92.5% of males worked full time and 7.5% worked part time and 61.4% of females worked full time and 38.6% worked part time.

	Burnham Church	South Bucks	Great Britain
Hours worked - for all people in employment			
Full time	77.9%	77.4%	75.9%
Part time	22.1%	22.6%	24.1%

Employment by Occupation

Source: CAS033, ONS, Census 2001

For the population of Burnham Church the top 3 occupation groups are:

- Managers and Senior Officials who make up 23.2% (South Bucks Average 25.8%)
- Administrative & Secretarial who make up 15.5% (South Bucks Average 14.0%)
- Associate Professional and Technical who make up 14.5% (South Bucks Average 15.4%)

These 3 occupation groups contribute just over 53% of occupations for the Ward.

Jobseeker's Allowance (JSA) Claimants

Source: ONS claimant count with rates and proportions, Nomisweb (June 2011)

Within Burnham Church Ward there were 36 people claiming Job Seekers Allowance based on a quarterly snapshot from June 2011. This accounts for 1.1% of the working age population which is slightly lower than the South Bucks average of 1.3% and lower than the Great Britain average of 3.7%.

Education

Source: CAS032, ONS, Census 2001

Within Burnham Church 31.2% of people aged 16 to 74 have no qualifications which is 4.5% higher than the South Bucks average but 4.6% lower than the Great Britain average. There is also a lower percentage with higher level qualifications compared to the South Bucks average.

	Burnham Church (numbers)	Burnham Church %	South Bucks %	Great Britain %
No qualifications or level unknown ¹	1090	31.2%	26.7%	35.8%
Lower level qualifications ²	1523	43.6%	44.6%	43.9%
Higher level qualifications ³	879	25.2%	28.6%	20.4%

¹ People without any academic, vocational or professional qualification or level unknown

² Qualifications equivalent to Level 1 to 3 of the National Key Learning Targets (i.e. GCSE's, O-Levels, A-Levels, NVQ Level 1-3)

³ Qualifications of Level 4 & above (i.e. first/higher degrees, NVQ Level 4 & 5, HND, HNC & other professional qualifications)

Travel

Distance Travelled to Work

Source: Table UV35, ONS, Census 2001

The table below shows the distance travelled to work for all people aged 16 to 74 who were in employment based on information collected in the 2001 Census.

	Burnham Church	South Bucks	South East	England & Wales
Works mainly at or from home	12.8%	13.1%	9.9%	9.2%
Less than 2km	13.5%	12.2%	20.4%	20.0%
2km to less than 5km	18.9%	15.3%	17.6%	20.0%
5km to less than 10km	20.8%	19.5%	15.2%	18.2%
10km to less than 20km	14.6%	16.4%	13.7%	15.2%
20km to less than 40km	11.4%	14.9%	10.3%	7.7%
40km and over	2.9%	3.3%	7.5%	4.9%
No fixed place of work	4.8%	4.9%	5.1%	4.4%
Other	0.2%	0.4%	0.3%	0.3%

Within Burnham Church 32.4% of people travel less than 5km to work which is 4.9% higher than the average for the District with fewer people travelling over 20km to work than the District average.

Method of Travel to Work

Source: Table UV39, ONS, Census 2001

The table below shows the method of travel to work for the usual resident population aged 16 to 74 who were in work based on information collected in the 2001 Census.

	Burnham Church	South Bucks	South East	England & Wales
Driving a car or van	65.6%	65.0%	59.2%	55.2%
On foot	6.5%	5.9%	9.9%	10.0%
Works mainly at or from home	12.8%	13.1%	9.9%	9.2%
Bus, minibus or coach	1.9%	1.5%	4.4%	7.4%
Passenger in a car or van	5.1%	4.3%	5.7%	6.3%
Train	4.6%	5.8%	5.6%	4.1%
Underground, metro, light rail or tram	0.2%	1.3%	0.2%	3.0%
Bicycle	2.0%	1.5%	3.1%	2.8%
Motorcycle, scooter or moped	0.7%	0.8%	1.1%	1.1%
Other	0.5%	0.8%	0.9%	1.0%

Within Burnham Church Ward there is a slightly higher percentage of people who travel to work on foot, by bicycle or by bus, minibus or coach than the District average. However there is not a significant difference between the Ward figures and the District average.

Car and Van Ownership

Source: Table UV62, ONS, Census 2001

The table below shows that in 2001 that 15.7% of households in Burnham Church did not own a car or van which is 4.6% higher than the District average.

	Burnham Church	South Bucks	South East	England & Wales
No car or van	15.7%	11.1%	19.4%	26.8%
1 car or van	38.9%	36.0%	42.6%	43.8%
2 cars or vans	35.8%	38.9%	29.6%	23.5%
3 or more cars or vans	9.5%	14.0%	8.4%	5.9%

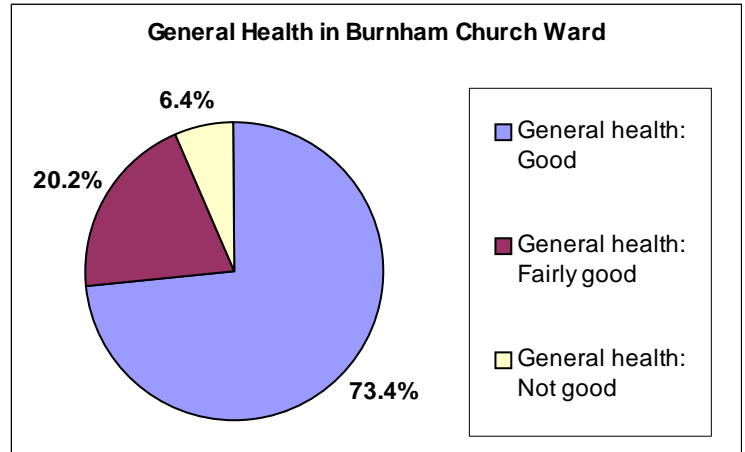
Health

General Health & Limiting Long-term Illness

Source: Table KS08, ONS, Census 2001

73.4% of people within Burnham Church declare themselves as having good health, this is 1.9% lower than the average for South Bucks. The Ward percentage is 4.8% higher than the England and Wales average of 68.6% who declared they had good health.

People declaring themselves as having not good general health in the Ward is higher than the average for the District but lower than the average for England and Wales.



In 2001 there was an estimated 14.1% of the population of Burnham Church who had a limiting long-term illness which equates to 692 people, this percentage is higher than the average for South Bucks of 13.1% but lower than the average for England and Wales which is 18.2%.

Provision of Unpaid Care

Source: Table KS08, ONS, Census 2001

Within the Burnham Church Ward 8.9% of the population provide some form of unpaid care, this equates to 439 people. The split down of this is as follows:

- 71.8% (315 people) were providing 1-19 hours unpaid care a week
- 12.5% (55 people) were providing 20-49 hours unpaid care a week
- 15.7% (69 people) were providing 50 or more hours unpaid care a week

Disability Living Allowance Claimants

Source: Department of Work and Pensions, August 2010

Disability Living Allowance is payable to people who are disabled and who have personal care needs, mobility needs or both. It consists of two components, the care component for people who need help with personal care and the mobility component for people who need help with getting around.

Within Burnham Church Ward there were 160 people claiming Disability Living Allowance based on figures from August 2010 which accounted for about 9.7% of the total claimants for South Bucks. The age breakdown of claimants is shown in the table opposite. 75 of the claimants were male and 85 were female.

Claimants Age	Count of Claimants
Claimants Aged Under 16	20
Claimants Aged 16-24	20
Claimants Aged 25-49	35
Claimants Aged 50-59	25
Claimants Aged 60-69	45
Claimants Aged 70 and Over	15

Of the people claiming disability living allowance:

- 10 had a claim duration for less than 12 months,
- 20 had a claim duration for between 1 & 2 years,
- 30 had a claim duration which was between 2 & 5 years
- 100 had a claim duration which was 5 years and over

Incapacity Benefit/Severe Disablement Allowance is a benefit provided to people due to them being incapable of work through illness or disability. This includes Sickness/Invalidity Benefit and Severe Disablement and Incapacity Benefit. Within the Burnham Church Ward there were 85 people claiming this type of benefit, 75 of which were Incapacity Benefit Claimants and 10 of which were severe Disablement Allowance Claimants.

Data has been rounded to base 5 for all figures in order to protect small counts.

Deprivation

Source: *Indices of Multiple Deprivation 2010, CLG.*

The Indices of Multiple Deprivation 2010 (IMD 2010) is a measure of deprivation at the small area level—Lower Super Output Area (LSOA). England is split into 32,482 LSOAs, LSOAs have a minimum population of 1000, and overall average population of 1500, and were ranked to create the IMD. All of the LSOAs in England are ranked, the LSOA ranked 1 by the IMD 2010 is the most deprived and the LSOA ranked 32,482 is the least deprived.

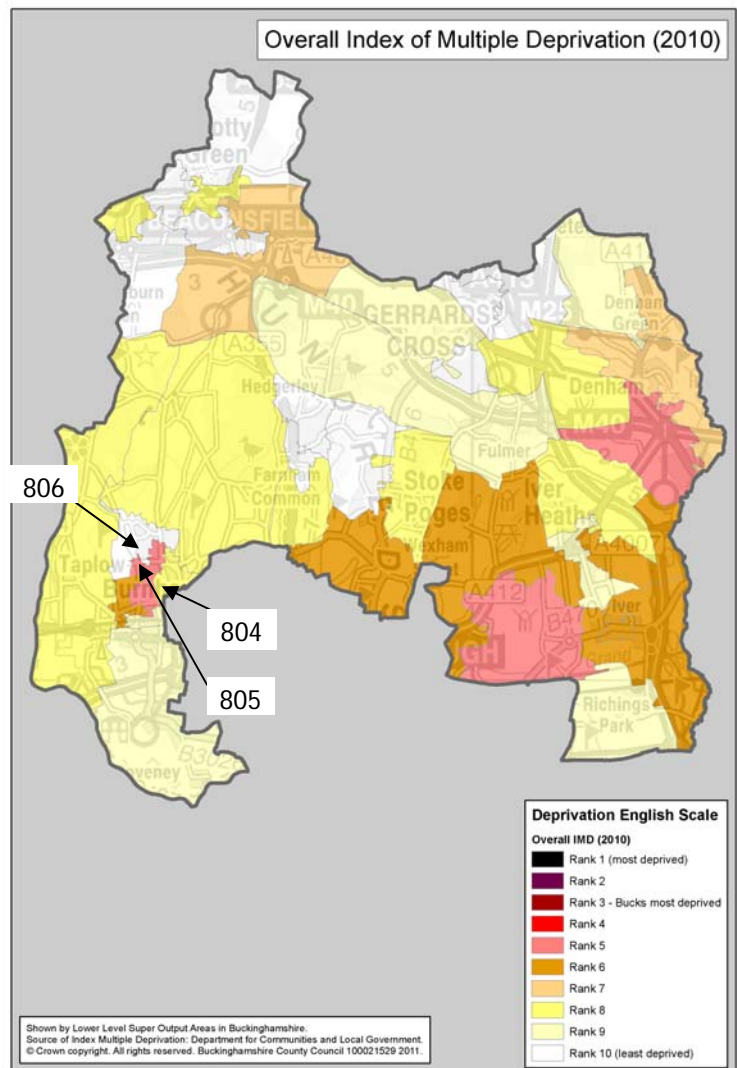
- Burnham Church Ward is made up of 3 LSOAs (804, 805 & 806 –locations shown on the map).

The IMD model is based on 7 distinct dimensions of deprivation which are then given a weighting to work out an overall ranking for deprivation as the table below shows.

Domain	Weighting
Income Deprivation	22.5%
Employment Deprivation	22.5%
Health Deprivation & Disability	13.5%
Education, Skills & Training Deprivation	13.5%
Barriers to Housing and Services	9.3%
Crime & Disorder	9.3%
Living Environment Deprivation	9.3%

The different domains

- Income Deprivation covers a range of indicators including adults and children in Income Support/ Income-Based JSA/ Pension Credit/ certain child tax credit families and Asylum seekers receiving subsistence/accommodation support.
- Employment Deprivation measures involuntary exclusion of working age population from the labour market. This includes indicators on recipients of Jobseekers Allowance, Incapacity Benefits, Severe Disablement Allowance, claimants of employment and support allowance, participants in the New Deal for under 25s, over 25s and new parents.
- Health Deprivation and Disability domain measures rates of poor health, early mortality and disability in an area and covers the entire age range, it includes indicators on years of potential life lost, comparative illness and disability ratio, proportion of adults under 60 suffering from mood or anxiety disorders and measures of acute morbidity.
- Education Skills and Training Deprivation covers two sub-domains: one relating to education deprivation for children/young people in the area, and one relating to lack of skills and qualifications among a sub-set of the working age population.
- Barriers to Housing and Services domain splits into two sub-domains: geographical barriers which looks at road distance to a GP surgery/general stores or supermarket/primary school and to a Post office; wider barriers includes issues relating to access to housing such as affordability and household overcrowding.
- Crime domain measures the rate of recorded crime for four major crime types, representing the risk of personal and material victimisation at a small area level. These include Burglary, Theft, Criminal Damage and Violence.
- Living environment deprivation comprises two sub-domains: the 'indoors' which measures the quality of housing (housing in poor condition and without central heating), and the 'outdoors' which contains two measures about air quality and road traffic accidents.



For the overall level of deprivation one of the LSOAs in Burnham Church (805) falls within the lower half of all LSOAs in England for deprivation, LSOA 804 falls in the least deprived 29% and LSOA 806 falls within the least deprived 7% in England so there are clear differences within the Ward.

For each SOA within Burnham Church the table below shows the rank out all the LSOAs in England, the deprivation percentage and the rank compared to the other LSOAs in the District for each domain.

Domain	LSOA	Rank out of 32,482 LSOAs in England 1 most deprived / 32,482 least deprived	Deprivation % 0 = most deprived 100 = least deprived	Rank out of LSOAs in District 1 = lowest rank 40= highest rank
Overall IMD Rank	804	23,260	71.61%	15/40
	805	15,966	49.15%	4/40
	806	30,324	93.36%	34/40
Income Deprivation	804	22,364	68.85%	17/40
	805	12,134	37.36%	1/40
	806	30,905	95.15%	32/40
Employment Deprivation	804	27,137	83.54%	14/40
	805	16,795	51.71%	2/40
	806	31,293	96.34%	29/40
Health Deprivation & Disability	804	27,504	84.67%	13/40
	805	20,316	62.55%	2/40
	806	32,388	99.71%	36/40
Education, Skills & Training Deprivation	804	28,490	87.71%	26/40
	805	15,857	48.82%	7/40
	806	30,185	92.93%	30/40
Barriers to Housing & Services	804	20,545	63.25%	28/40
	805	15,828	48.73%	20/40
	806	17,904	55.12%	22/40
Crime & Disorder	804	3,017	9.29%	3/40
	805	5,534	17.04%	13/40
	806	9,246	28.46%	25/40
Living Environment Deprivation	804	19,743	60.78%	14/40
	805	26,318	81.02%	29/40
	806	29,797	91.73%	38/40

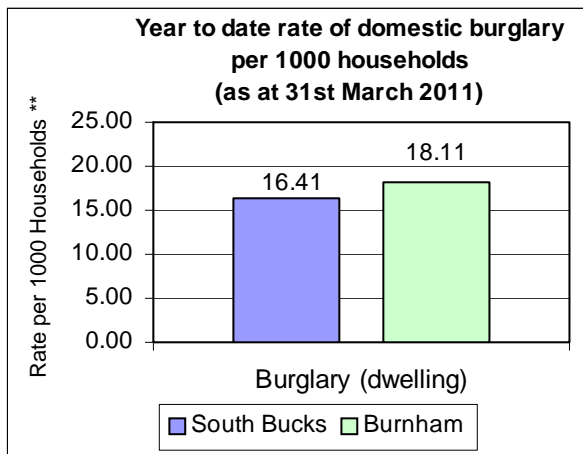
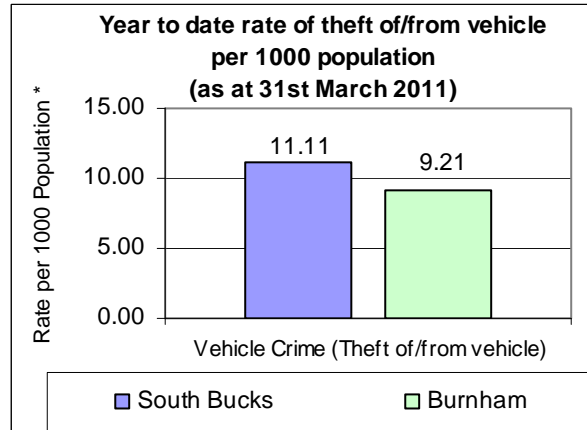
- For Income Deprivation there is clearly a difference between the LSOAs in Burnham Church with one of the LSOAs (805) falling in the most deprived 38% in England, LSOA 804 falls within the least deprived 32%, whilst LSOA 806 falls within the least deprived 5% in England. Based on the scoring used to work out this ranking we can say that 15% of people are income deprived in LSOA 805 and 7% are income deprived in LSOA 804. Looking at a further breakdown for children aged 0-15 there is 24% living in income deprived households for LSOA 805 and 6% for LSOA 804 and for older people aged 60 and over there is 19% living in income deprived households in LSOA 805 and 13% for LSOA 804.
- For Employment Deprivation LSOA 805 falls just outside of the lower half of all SOAs in England and ranks 2 out of 40 compared to the other LSOAs in the District, LSOA 804 falls within the least deprived 17% and SOA 806 falls within the least deprived 4%.
- For Health Deprivation & Disability LSOA 805 falls within the least deprived 38% in England but ranks 2 out of 40 compared to the other LSOAs in the District, LSOA 806 falls in the least deprived 1% in England which shows a real difference across the ward.
- Crime and Disorder is particularly high within Burnham Church with all LSOAs falling in the most deprived 29% in England. SOA 804 actually falls within the most deprived 10% in England and ranks 3 out of 40 compared to other LSOAs in the District and LSOA 805 falls in the most deprived 17%.

Crime

Source: Thames Valley Police Crime Summary for South Bucks District as at 31st March 2011

Information on crime levels is produced at the Police Neighbourhood level rather than by Ward. The information is based on year to date crime summaries produced by Thames Valley Police for the District.

The graph opposite shows that for the Burnham police neighbourhood area the rate of theft of or from a vehicle per 1,000 population is lower than the average for the District. Based on the previous years reporting, vehicle crime decreased by 29.8% for Burnham police neighbourhood area from 161 incidents in 2009/10 to 113 incidents in 2010/11.



The rate of domestic burglary per 1,000 households for Burnham police neighbourhood area is higher than the District average. The number of domestic burglaries for the Burnham police neighbourhood area has decreased from 96 in 2009/10 to 87 in 2010/11.

* Population figures to work out the rates per 1000 population are based on the Civil Parish population estimates in South Bucks, mid-2009.

** Household figures to work out the rates per 1000 households are based on the 2001 census data for Parishes and includes new housing completions per parish from 2001-2011. Data inaccuracy may occur due to boundary variations.

The table below shows the number of offences over the last three years for the Burnham police neighbourhood area and the District:

Number of offences	Burnham					South Bucks				
	2008/2009	2009/2010	% change	2010/2011	% change	2008/2009	2009/2010	% change	2010/2011	% change
Vehicle Crime Theft of/from vehicle)	162	161	-0.6%	113	-29.8%	1125	1003	-10.8%	740	-26.2%
Burglary (Dwelling)	102	96	-5.9%	87	-9.4%	601	511	-15.0%	432	-15.5%
All Crime	1155	1085	-6.1%	806	-25.7%	6323	5809	-8.1%	4843	-16.6%

Crime statistics for the District are produced by Thames Valley Police on a monthly basis and should be used for up to date trend information. There are some differences between the neighbourhood police area figures and the overall South Bucks figures due to different timelines in producing the report and crimes that are reclassified over the reporting period.

When using this Ward Profile please note that information is taken from a variety of sources and SBDC can not vouch for its accuracy & reliability. Many statistics come from the 2001 Census so this should be taken into account when utilising these figures as these are now 10 years old.

Some of the data contained in this profile is protected by various copyrights and cannot be re-used elsewhere without permission of the relevant copyright holder (please refer to source data for more information).