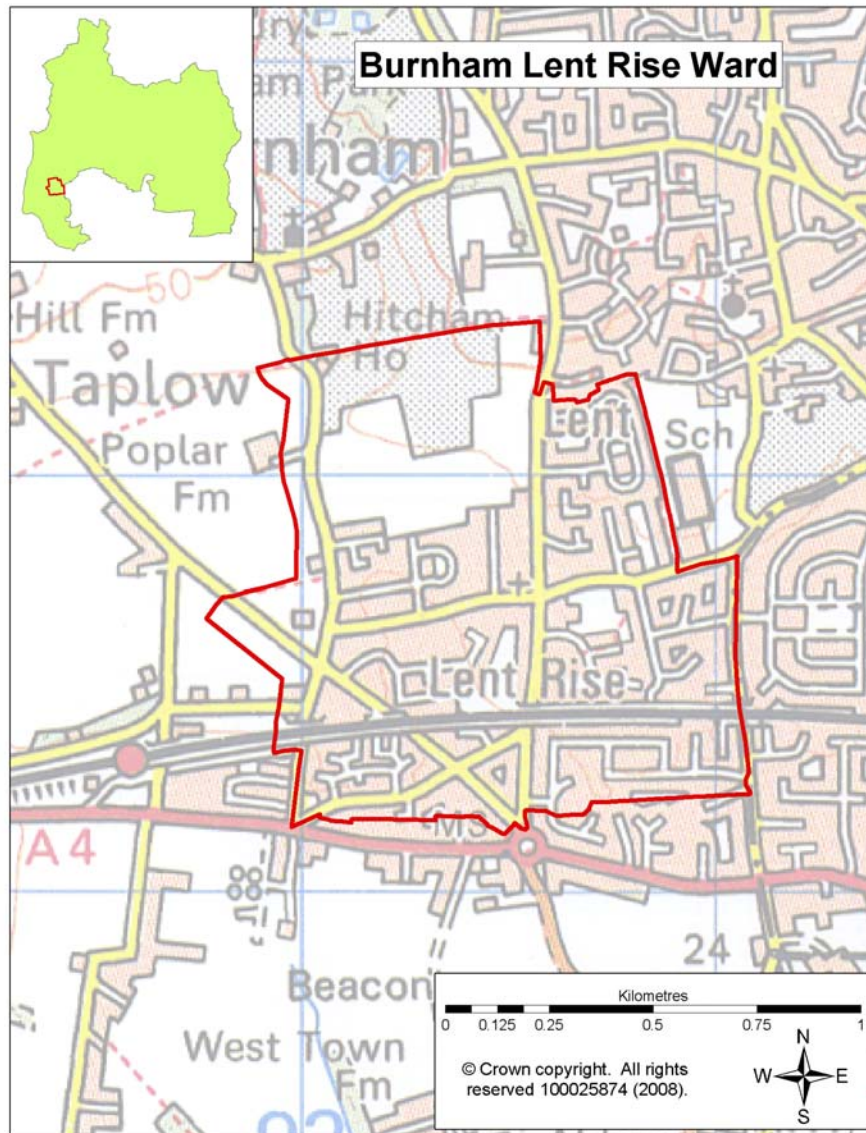


This ward profile aims to provide an overview of information about the Burnham Lent Rise Ward. The majority of this information is at ward level for Burnham Lent Rise, except for a small number of statistics which are only available at parish or district level.



## Summary of key points:

- the 65 and over age group make up 13.3% of the Ward this is lower than the average of 18.3% for South Bucks;
- the number of persons per hectare in Burnham Lent Rise was 39.8, this is higher than the average of 4.38 for South Bucks. This is the highest population density compared to the other wards within the District;
- the main type of land use is domestic gardens and makes up 37.1% of the land use for the Ward; this is the only Ward in the District where greenspace isn't the main type of land use;
- 18.5% of the housing in the Ward is purpose built flats which is almost 5% higher than the District average;
- there is a higher percentage of single non-pensionable households (4.8% higher) and a lower percentage of pensioner households (7%) than the District average;
- based on Acorn categories the main type of grouping within this Ward are 'Comfortably off' which makes up 56.4%, which is higher than the District average of 21.6%. There is a higher amount of households falling in the 'Moderate Means' and 'Hard Pressed' groupings at 14.9% higher than the District average of 5.9%.
- 82.4% of the working age population within the Ward are economically active, 4.5% higher than the average of 77.9% for the District; 3.6% of the economically active population are unemployed in Burnham Lent Rise which is higher than the District average;
- there is a higher percentage of people who travel less than 10km to work than the District average, and there are also fewer people who work mainly at or from home which is 5.3% lower than the District average;
- based on the 2010 Indices of Deprivation, for the overall level of deprivation there are clear differences within Burnham Lent Rise with one SOA falling in the lower half of all LSOAs in England for deprivation and another in the same Ward falling in the least deprived 15% in England.

## Population

### Age structure

Source: Office of National Statistics—mid year population estimates 2009 ward & district level

In 2009 the population of Burnham Lent Rise Ward was 4,811 with males making up 49.0% of the population and females making up 51.0%. The age breakdown of the Ward's population is shown in the table below.

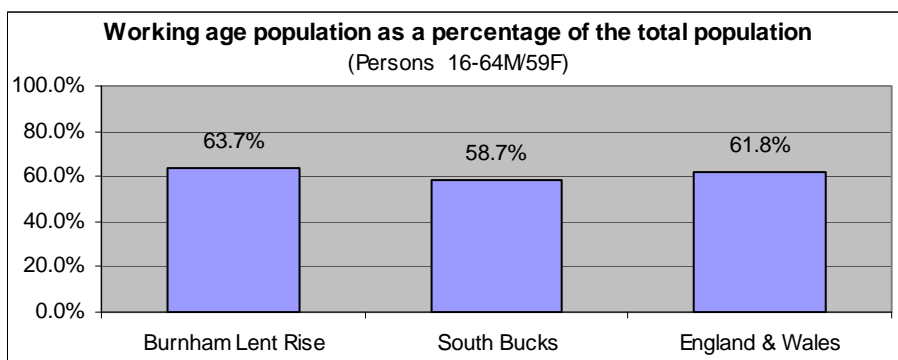
	Total	0-4	5-14	15-19	20-44	45-64	65+
Burnham Lent Rise	4,811	7.0%	12.5%	5.6%	35.0%	26.6%	13.3%
South Bucks	66,600	5.7%	12.5%	5.7%	29.7%	27.9%	18.3%
England & Wales	-	6.1%	11.3%	6.4%	34.5%	25.3%	16.4%

- There were 1,208 people within the 0-19 age group living within the Ward which contributes 25.1% to the population of Burnham Lent Rise; this is higher than the average of 23.9% for South Bucks.
- The 65 and over age group make up 13.3% of the Ward this is 5% lower than the average of 18.3% for South Bucks and the lowest percentage of this age group for any ward in the District.
- There was a 4.7% increase in population in the ward from 2005-2009 based on mid year estimates, the same as the increase for South Bucks of 4.7%.

### Working Age Population

Source: Office of National Statistics—2010 Ward Population Estimates, mid-2009 (experimental statistics) - working age

Based on mid-2009 figures the working age population makes up 63.7% of the population of Burnham Lent Rise, this is 5% higher than the average for South Bucks and 1.9% higher than the average for England & Wales.



### Population Projections

Source: 2008-based sub national population projections, Office for National Statistics/Bucks Strategic Partnership (BSP) population projections October 2010

National population projections are not available at ward level but based on the latest national population projections South Bucks District is predicted to have a population increase of 25.9% over the next 25 years from 65,700 to 82,700 in 2033. The projections are trend based which means assumptions for future levels of births, deaths and migration are based on observed levels (they do not take into account any future policy changes that have not yet occurred). Within these figures based on projections for the district from 2008 to 2033:

- the 0-19 age group is predicted to rise by 20.1% (England 10.4%);
- the 20-64 age group by 15.5% (England 8.3%); and
- the 65+ age group by 63.9% (England 65.3%).

Local population projections at district and ward level (commissioned by Bucks CC) have been produced which take account of additional datasets including housing provision in the area and other local inputs. These put the population at 67,550 in 2026 (a difference of over 11,000 from the national projections for 2026). The projections cover a different time period and the age group breakdown is different. The significant variances between the projections means caution needs to be applied when using these figures as a realistic figure is more likely to fall somewhere between the two predictions (further information about both sets of projections can be found on KnowledgeSource).

Based on the BSP projections for Burnham Lent Rise the estimated population is forecasted to rise from 4,650 in 2009 to 4,150 in 2026 a decrease of 10.8%. Looking at a split down by age group based on projections for the ward from 2009 to 2026:

- the 0-17 age group is predicted to decrease from 1,100 to 850 (-22.7%)
- 18—retired\* age group is predicted to decrease from 2,800 to 2,250 (-19.6%)
- retired\* + age group is predicted to rise from 750 to 1000 (33.3%)

(\*retired is 60 for females and 65 for males)

## Population Density

Source: Table UV02, ONS, Census 2001

The number of persons per hectare in Burnham Lent Rise based on the 2001 Census information was 39.8, this is higher than the average of 4.38 for South Bucks and 3.45 for England and Wales. This is the highest population density compared to the other wards within the District.

## Ethnicity

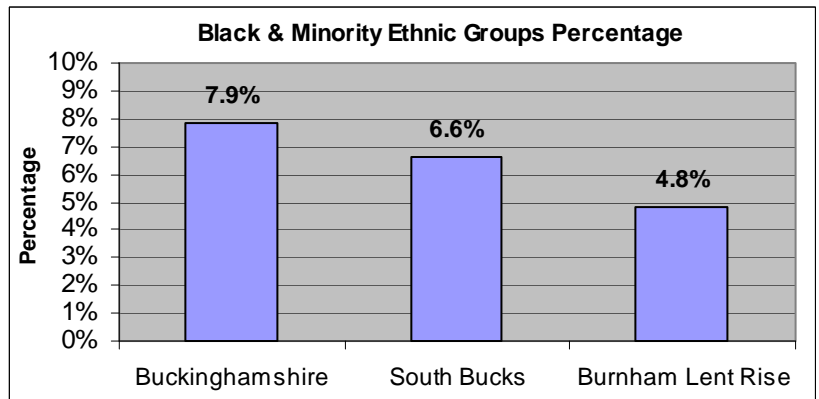
Source: Table KS06 & UV08, Census 2001/ Nomisweb standard tables, ONS.

Resident Population Estimates by Ethnic Group (experimental), 2009, Office for National Statistics.

Based on 2001 Census information 90.4% of the population of Burnham Lent Rise Ward stated their ethnicity as White British; this is higher than the 86.5% average for South Bucks. 2.7% of the population of the Ward declare their ethnicity as Other-White, lower than the 5.1% average for South Bucks.

There are 4.8% of the population who are from Black & Minority Ethnic (BME) Groups this is lower than the 6.6% average for South Bucks. This is split down into the following BME Groups.

BME mix	Percentage
Mixed	1.0%
Asian or Asian British	2.2%
Black or Black British	0.8%
Chinese or other ethnic group	0.8%



The split by age for BME groups is shown below :

- For the 0-19 age group 4.9% of the population are from BME Groups (10.2% South Bucks average)
- For the 20-64 age group 5.5% of the population are from BME groups (6.7% South Bucks average)
- For the 65 and over age group 2.0% of the population are from BME groups (1.5% South Bucks average)

Looking at the change from the 1991 to 2001 Census for South Bucks District, 3.3% identified with one of the non-white ethnic categories in 1991 compared to 6.6% in 2001, an increase of 3.3%. Based on experimental population estimates for 2009 13.1% of the population in South Bucks were from a non-white ethnic group.

7.3% of the population of Burnham Lent Rise were born outside of the UK which is lower than the District average of 12.2%. The Ward population born outside the UK are predominantly from Asia (2.0%) other Western European countries (1.6%) and Republic of Ireland (1.4%), this is lower than the District average for

## Religion

Source: Table KS07, ONS, Census 2001

Based on 2001 Census information 76.9% of the population of Burnham Lent Rise Ward stated their religion as Christianity; this is higher than the 75.6% average for South Bucks. 13.6% stated that they had no religion which is 1.1% higher than the District average.

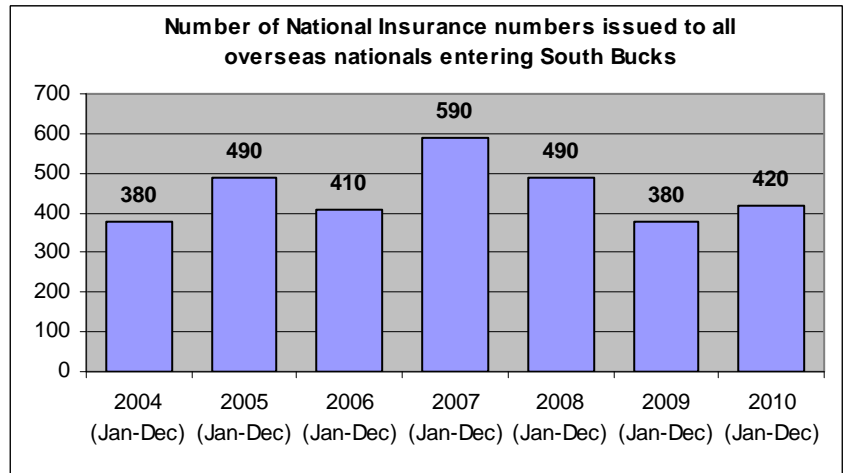
People stating religion as:	Burnham Lent Rise	South Bucks	England and Wales
Christian	76.9%	75.6%	71.8%
Buddhist	0.5%	0.3%	0.3%
Hindu	0.4%	1.2%	1.1%
Jewish	0.2%	0.5%	0.5%
Muslim	0.9%	1.1%	3.0%
Sikh	0.9%	1.6%	0.6%
Other religions	0.5%	0.3%	0.3%
No religion	13.6%	12.5%	14.8%
Religion not stated	6.2%	6.9%	7.7%

## Migrant Workers

Source: DWP 2010, Local Area Migration Indicators table from Office of National Statistics

Overseas nationals obtain a National Insurance (NI) Number before they enter into employment or upon starting work, so registrations data can be a good indication of new arrivals who are economically active. (Some foreign nationals do obtain a NI number but do not take up employment e.g. refugees will need an NI number but will not all be economically active.)

These figures are only available at district level and do not go down to ward level.



The top 6 nationalities for overseas nationals who are issued a National Insurance number entering South Bucks in 2010 were Poland, India, Australia, Germany, Italy and Spain.

## Environment

### Land Use Statistics

Source: Generalised Land Use Database Statistics 2005, Communities and Local Government (last updated Jan-07)

The following data is taken from experimental statistics from January 2005 from the generalised land use database. The total area of all land types for Burnham Lent Rise is 116 hectares which makes up 0.8% of the land in the District. The main type of land use is domestic gardens and makes up 37.1% of the land use for the Ward. Communities and Local Government consider the 2005 figures to be the definitive land use statistics. No further work is planned on the Generalised Land Use Database.

Type of land use	Hectares	% of ward area that land use type makes up	% of district that land use type makes up
Area of Domestic Buildings	10.3	8.9%	1.7%
Area of Non Domestic Buildings	1.6	1.4%	0.8%
Area of Road	10.9	9.4%	4.2%
Area of Path	0.6	0.5%	0.2%
Area of Rail	7.2	6.2%	0.2%
Area of Domestic Gardens	43.1	37.1%	11.2%
Area of Greenspace	39.4	33.9%	77.5%
Area of Water	0.0	0.0%	2.0%
Area of Other Land Uses	3.2	2.7%	2.2%
Area of Unclassified Land	0	0.0%	0.0%

Based on figures from the Council's 2009/10 Annual Monitoring Report for Burnham Parish there were:

- 1026.2 hectares of land designated as Area of Attractive Landscape (designation by Bucks CC)
- 2 conservation areas within Burnham Parish and 126 listed buildings

## Housing

### Household Tenure

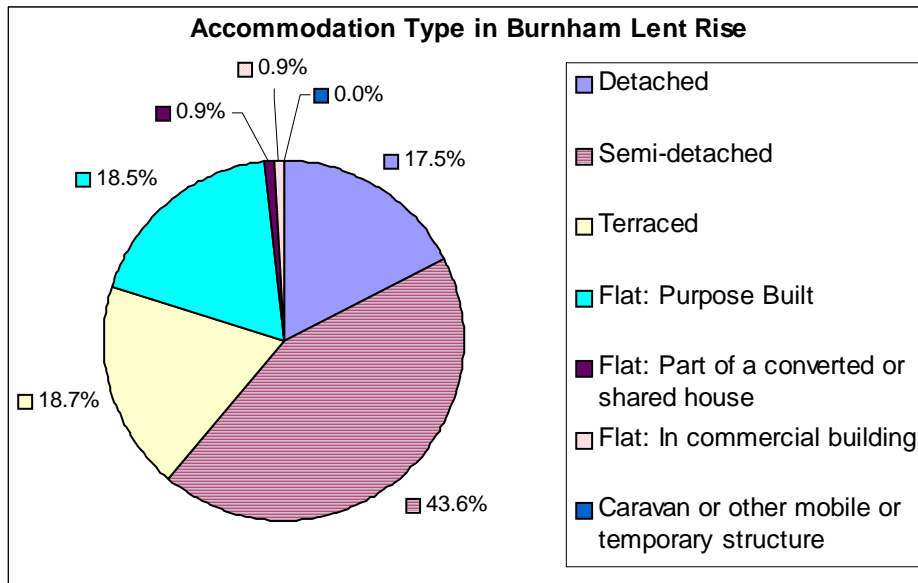
Source: Table KS18, ONS, Census 2001

Within Burnham Lent Rise owner occupied housing makes up 75.1% of the household tenure within the Ward, there is 3.8% more social rented households than the District average. 26.6% of owner occupied housing is owned outright which is the lowest percentage compared to other wards in the District.

Household Tenure	Burnham Lent Rise	South Bucks	England & Wales
Owner Occupied	75.1%	78.0%	68.9%
Social Rented: Council/ Housing Association/ Registered Social Landlord	16.4%	12.6%	19.2%
Private Rented: Private landlord or letting agency	6.7%	6.1%	8.7%
Other	1.7%	3.3%	3.2%

### Accommodation Type

Source: Table KS16, ONS, Census 2001



Based on the 2001 Census there were 1867 households in Burnham Lent Rise, 98% of these were lived in and 2% were either vacant or used as a second residence or holiday accommodation.

18.5% of the housing in the Ward is purpose built flats which is almost 5% higher than the District average. Burnham Lent Rise also has the lowest percentage of detached houses when compared to the other Wards in the District.

### Household Composition

Source: Table KS20, ONS, Census 2001

The table below shows the household composition in 2001 for Burnham Lent Rise compared to the average for the District. The main difference to the District average is there is a higher percentage of single non-pensionable households (4.8% higher) and a lower percentage of single pensioner households (3.4%) and all other pensioner households (3.6% lower).

⇒ There were 91 lone parent households with dependent children.

Household Composition	Burnham Lent Rise (Number)	Burnham Lent Rise (%)	South Bucks District average (%)	Difference
Single non-pensionable households	303	16.6%	11.7%	4.8%
Single pensioner	200	10.9%	14.3%	-3.4%
All other pensioner households	152	8.3%	11.9%	-3.6%
Married couple households: No children	252	13.8%	14.9%	-1.1%
Married couple households: With children	509	27.8%	28.6%	-0.8%
Cohabiting couple households: No children	87	4.8%	4.1%	0.6%
Cohabiting couple households: With children	74	4.0%	2.6%	1.4%
Lone parent households: With dependent children	91	5.0%	3.3%	1.7%
Lone parent households: All children non-dependent	58	3.2%	2.8%	0.3%
Student households	0	0.0%	0.0%	0.0%
Other households: With dependent children	33	1.8%	2.3%	-0.5%
Other households: Other	71	3.9%	3.3%	0.5%

## Council Tax Banding

Source: Valuation list for the authority on 4th Oct 2010

Council tax information can provide an overview of house value within an area, however whilst they provide an overview it should be noted that these bandings were created several years ago. This information is only available at a parish level rather than by ward. The percentage of houses falling in the A-C bands (the lower council tax bands) for Burnham Parish is 6.3% higher than the District average.

Parish	Dwelling Count	Bands A-C	Bands D-F	Bands G-H
Burnham	4898	23.9%	61.6%	14.5%
South Bucks District	27,628	17.6%	50.8%	31.6%

## House prices

Source: DCLG tables from Land Registry data—2010

The average house price in 2010 in South Bucks based on house sales was £536k over 47% higher than the average for Buckinghamshire. The average for Chiltern was £457,202, Wycombe was £338,294 and Aylesbury Vale was £273,022.

## Acorn Data

Source: Acorn Data 2010, produced by CACI.

Acorn Data provides useful data about the characteristics of people based on the postcode in which they live. Using data from a range of sources, every postcode is classified into one of 5 categories, which split down into further groups. This data provides useful information to start to understand the feelings, behaviours and expectations of each group. N.B All category names are already defined on the database.

Area	Wealthy Achievers	Urban Prosperity	Comfortably Off	Moderate Means	Hard Pressed	No Classification
Burnham Lent Rise	17.0%	10.6%	56.4%	4.3%	10.6%	1.1%
South Bucks	60.3%	10.9%	21.6%	2.1%	3.8%	1.3%

Looking at the five main categories it shows that Burnham Lent Rise has a much lower percentage of 'Wealthy Achiever' households than the District average by 43.3%. The tables below provide a detailed split down into smaller groupings which provide an idea of the type of households within each category.

Category 1 - Wealthy Achievers	Ward %	District %
Wealthy Mature Professionals	0.0%	24.2%
Villages with Wealthy Commuters	0.0%	14.4%
Well Off Managers	0.0%	4.8%
Affluent Greys	3.2%	6.7%
Flourishing Families	13.8%	10.3%

Category 2 - Urban Prosperity	Ward %	District %
Urban Professionals	10.6%	10.9%

Category 3 - Comfortably Off	Ward %	District %
Secure Families	43.6%	13.3%
Settled Suburbia/Prudent Pensioners	12.8%	8.4%

Category 4 - Moderate Means	Ward %	District %
Moderate Means	4.3%	2.1%

Category 5 - Urban Prosperity	Ward %	District %
Hard Pressed	10.6%	3.8%

Unclassified	Ward %	District %
Unclassified	1.1%	1.3%

The main type of grouping within this Ward are 'Secure Families' which make up 43.6% of the ward. Education is important to this group, who have more very young children than average. Households are not economically deprived, or well off, but have fairly average incomes. People's health is generally good, but a slightly larger proportion than average make poor lifestyle choices.

## Employment & Education

### Economically active

Source: CAS028, ONS, Census 2001

Based on information from the 2001 Census 82.4% of the working age population within the Ward are economically active, 4.5% higher than the average of 77.9% for the District. The split shows that there is 74.5% of the female working age population who are economically active within Burnham Lent Rise which is 5.9% higher than the District average.

	Burnham Lent Rise	South Bucks	Great Britain
<b>Economically active (% of working age population)</b>			
All People	82.4%	77.9%	74.0%
Males	90.5%	87.7%	81.4%
Females	74.5%	68.6%	66.8%
<b>Unemployed (% of economically active)</b>			
All People	3.6%	3.0%	5.7%

3.6% of the economically active population are unemployed in Burnham Lent Rise which is 0.6% higher than the District average.

Based on latest estimates the economically active rate for South Bucks is 76.5% and the rate for Great Britain is 76.2% (source: Annual Population Survey Jan - Dec 2010).

### Hours worked

Source: CAS029, ONS, Census 2001

The table opposite shows that 78.4% of the people in employment within the Ward work full-time hours and 21.6% work part-time hours. Looking at the split down by sex, 93.3% of males worked full time and 6.7% worked part time and 61.4% of females worked full time and 38.6% worked part time.

	Burnham Lent Rise	South Bucks	Great Britain
<b>Hours worked - for all people in employment</b>			
Full time	78.4%	77.4%	75.9%
Part time	21.6%	22.6%	24.1%

### Employment by Occupation

Source: CAS033, ONS, Census 2001

For the population of Burnham Lent Rise the top 3 occupation groups are:

- Managers and Senior Officials who make up 18.9% (South Bucks Average 25.8%)
- Associate Professional and Technical who make up 15.4% (South Bucks Average 15.4%)
- Administrative & Secretarial who make up 15.3% (South Bucks Average 14.0%)

These 3 occupation groups contribute to almost 50% of occupations for the Ward.

### Jobseeker's Allowance (JSA) Claimants

Source: ONS claimant count with rates and proportions, Nomisweb (June 2011)

Within Burnham Lent Rise Ward there were 63 people claiming Job Seekers Allowance based on a quarterly snapshot from June 2011. This accounts for 2.0% of the working age population which is higher than the South Bucks average of 1.3% but lower than the Great Britain average of 3.7%.

### Education

Source: CAS032, ONS, Census 2001

Within Burnham Lent Rise 19.1% of people aged 16 to 74 have higher level qualifications which is 9.5% lower than the average for South Bucks. 32% have no qualifications which is 5.3% higher than the South Bucks average but 3.8% lower than the Great Britain average.

	Burnham Lent Rise (numbers)	Burnham Lent Rise %	South Bucks %	Great Britain %
No qualifications or level unknown <sup>1</sup>	1,049	32.0%	26.7%	35.8%
Lower level qualifications <sup>2</sup>	1,605	48.9%	44.6%	43.9%
Higher level qualifications <sup>3</sup>	625	19.1%	28.6%	20.4%

<sup>1</sup> People without any academic, vocational or professional qualification or level unknown

<sup>2</sup> Qualifications equivalent to Level 1 to 3 of the National Key Learning Targets (i.e. GCSE's, O-Levels, A-Levels, NVQ Level 1-3)

<sup>3</sup> Qualifications of Level 4 & above (i.e. first/higher degrees, NVQ Level 4 & 5, HND, HNC & other professional qualifications)

## Travel

### Distance Travelled to Work

Source: Table UV35, ONS, Census 2001

The table below shows the distance travelled to work for all people aged 16 to 74 who were in employment based on information collected in the 2001 Census.

	Burnham Lent Rise	South Bucks	South East	England & Wales
Works mainly at or from home	7.8%	13.1%	9.9%	9.2%
Less than 2km	15.3%	12.2%	20.4%	20.0%
2km to less than 5km	24.2%	15.3%	17.6%	20.0%
5km to less than 10km	18.3%	19.5%	15.2%	18.2%
10km to less than 20km	15.7%	16.4%	13.7%	15.2%
20km to less than 40km	10.3%	14.9%	10.3%	7.7%
40km and over	3.3%	3.3%	7.5%	4.9%
No fixed place of work	5.1%	4.9%	5.1%	4.4%
Other	0.0%	0.4%	0.3%	0.3%

Within Burnham Lent Rise there is a higher percentage of people who travel less than 10km to work than the District average, over 10% higher. Another key difference is there are fewer people who work mainly at or from home which is 5.3% lower than the District average.

### Method of Travel to Work

Source: Table UV39, ONS, Census 2001

The table below shows the method of travel to work for the usual resident population aged 16 to 74 who were in work based on information collected in the 2001 Census.

	Burnham Lent Rise	South Bucks	South East	England & Wales
Driving a car or van	69.1%	65.0%	59.2%	55.2%
On foot	7.0%	5.9%	9.9%	10.0%
Works mainly at or from home	7.8%	13.1%	9.9%	9.2%
Bus, minibus or coach	1.4%	1.5%	4.4%	7.4%
Passenger in a car or van	5.2%	4.3%	5.7%	6.3%
Train	4.4%	5.8%	5.6%	4.1%
Underground, metro, light rail or tram	0.5%	1.3%	0.2%	3.0%
Bicycle	2.9%	1.5%	3.1%	2.8%
Motorcycle, scooter or moped	0.9%	0.8%	1.1%	1.1%
Other	0.7%	0.8%	0.9%	1.0%

Within Burnham Lent Rise Ward there is a higher percentage of people driving a car or van compared to the District average, over 4% higher. There is also a higher percentage of people travelling to work by bicycle or on foot.

### Car and Van Ownership

Source: Table UV62, ONS, Census 2001

The table below shows that in 2001 that 13.2% of households in Burnham Lent Rise did not own a car or van which is 2.1% higher than the District average but 13.6% lower than the average for England & Wales.

	Burnham Lent Rise	South Bucks	South East	England & Wales
No car or van	13.2%	11.1%	19.4%	26.8%
1 car or van	42.6%	36.0%	42.6%	43.8%
2 cars or vans	36.0%	38.9%	29.6%	23.5%
3 or more cars or vans	8.2%	14.0%	8.4%	5.9%

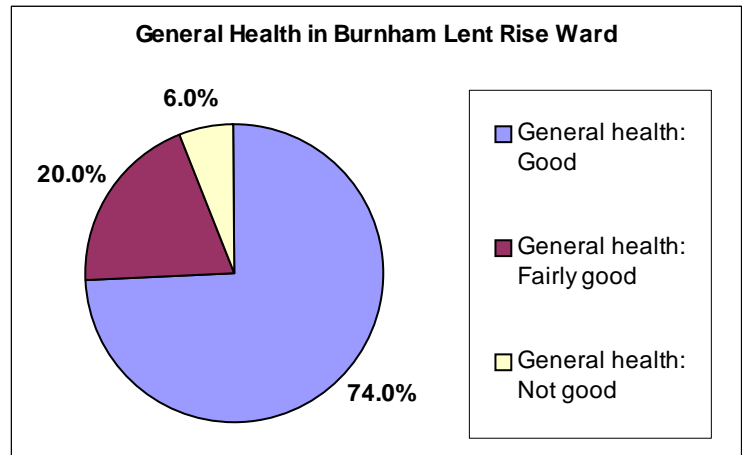
## Health

### General Health & Limiting Long-term Illness

Source: Table KS08, ONS, Census 2001

74% of people within Burnham Lent Rise declare themselves as having good health, this is slightly lower than the average for South Bucks. The Ward percentage is 5.5% higher than the England and Wales average of 68.6% who declared they had good health.

People declaring themselves as having not good general health in the Ward is similar to the District average of 5.9%.



In 2001 there was an estimated 13.5% of the population of Burnham Lent Rise who had a limiting long-term illness which equates to 608 people, this percentage is slightly higher than the average for South Bucks of 13.1% but lower than the average for England and Wales which is 18.2%.

### Provision of Unpaid Care

Source: Table KS08, ONS, Census 2001

Within the Burnham Lent Rise Ward 9.0% of the population provide some form of unpaid care, this equates to 404 people. The split down of this is as follows:

- 75.5% (305 people) were providing 1-19 hours unpaid care a week
- 5.5% (22 people) were providing 20-49 hours unpaid care a week
- 19.1% (77 people) were providing 50 or more hours unpaid care a week

### Disability Living Allowance Claimants

Source: Department of Work and Pensions, August 2010

Disability Living Allowance is payable to people who are disabled and who have personal care needs, mobility needs or both. It consists of two components, the care component for people who need help with personal care and the mobility component for people who need help with getting around.

Within Burnham Lent Rise Ward there were 165 people claiming Disability Living Allowance based on figures from August 2010 which accounted for about 10% of the total claimants for South Bucks. The age breakdown of claimants is shown in the table opposite. 85 of the claimants were male and 80 were female.

Claimants Age	Count of Claimants
Claimants Aged Under 16	20
Claimants Aged 16-24	10
Claimants Aged 25-49	65
Claimants Aged 50-59	25
Claimants Aged 60-69	30
Claimants Aged 70 and Over	15

Of the people claiming disability living allowance:

- 10 had a claim duration for less than 12 months,
- 20 had a claim duration for between 1 & 2 years,
- 30 had a claim duration which was between 2 & 5 years
- 105 had a claim duration which was 5 years and over

Incapacity Benefit/Severe Disablement Allowance is a benefit provided to people due to them being incapable of work through illness or disability. This includes Sickness/Invalidity Benefit and Severe Disablement and Incapacity Benefit. Within the Burnham Lent Rise Ward there were 100 people claiming this type of benefit, 85 of which were Incapacity Benefit Claimants and 15 of which were severe Disablement Allowance Claimants.

*Data has been rounded to base 5 for all figures in order to protect small counts.*

## Deprivation

Source: *Indices of Multiple Deprivation 2010, CLG.*

The Indices of Multiple Deprivation 2010 (IMD 2010) is a measure of deprivation at the small area level—Lower Super Output Area (LSOA). England is split into 32,482 LSOAs, LSOAs have a minimum population of 1000, and overall average population of 1500, and were ranked to create the IMD. All of the LSOAs in England are ranked, the LSOA ranked 1 by the IMD 2010 is the most deprived and the LSOA ranked 32,482 is the least deprived.

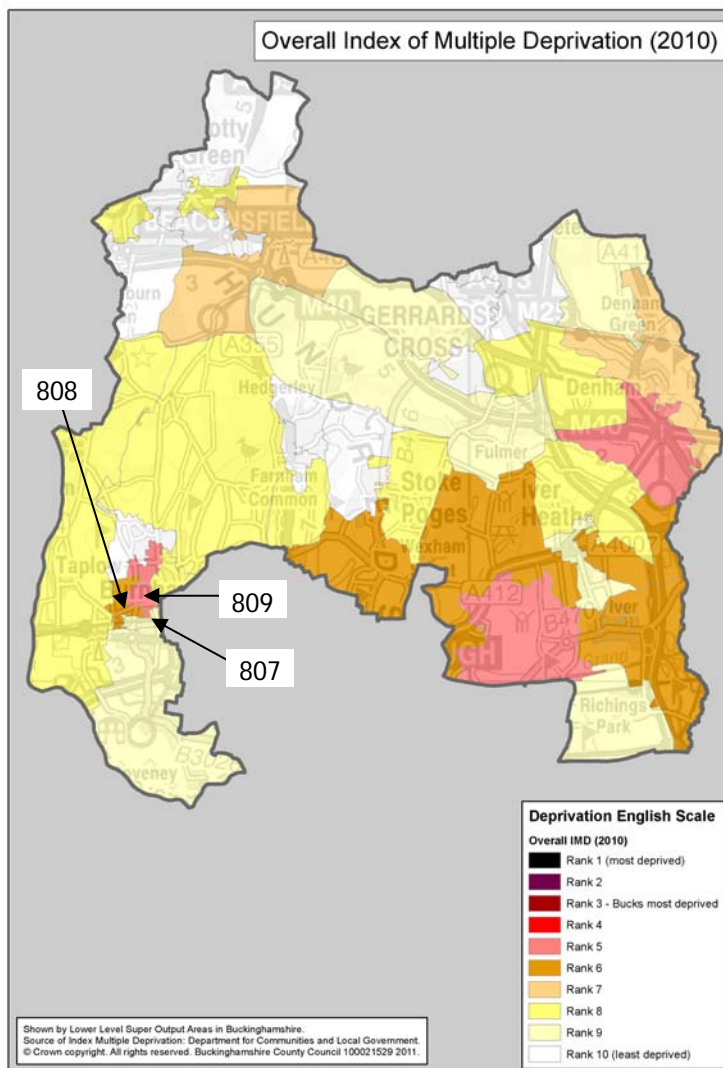
- Burnham Lent Rise Ward is made up of 3 LSOAs (807, 808 & 809 –locations shown on the map).

The IMD model is based on 7 distinct dimensions of deprivation which are then given a weighting to work out an overall ranking for deprivation as the table below shows.

Domain	Weighting
Income Deprivation	22.5%
Employment Deprivation	22.5%
Health Deprivation & Disability	13.5%
Education, Skills & Training Deprivation	13.5%
Barriers to Housing and Services	9.3%
Crime & Disorder	9.3%
Living Environment Deprivation	9.3%

### The different domains

- Income Deprivation covers a range of indicators including adults and children in Income Support/ Income-Based JSA/ Pension Credit/ Working Tax Credit or Child Tax Credit households or National Asylum Support Services supported asylum seekers in receipt of subsistence/ accommodation support.
- Employment Deprivation measures involuntary exclusion of working age population from the labour market. This includes indicators on recipients of Jobseekers Allowance, Incapacity Benefits, Severe Disablement Allowance, participants in the New Deal for the 18 -24s/25+ who are not in receipt of JSA or participants in the new deal for lone parents.
- Health Deprivation and Disability domain measures rates of poor health, early mortality and disability in an area and covers the entire age range, it includes indicators on years of potential life lost, comparative illness and disability ratio, proportion of adults under 60 suffering from mood or anxiety disorders and measures of acute morbidity.
- Education Skills and Training Deprivation covers two sub-domains: one relating to education deprivation for children/young people in the area, and one relating to lack of skills and qualifications among a sub-set of the working age population.
- Barriers to Housing and Services domain splits into two sub-domains: geographical barriers which looks at road distance to a GP surgery/general stores or supermarket/primary school and to a Post office; wider barriers includes issues relating to access to housing such as affordability and household overcrowding.
- Crime domain measures the rate of recorded crime for four major crime types, representing the risk of personal and material victimisation at a small area level. These include Burglary, Theft, Criminal Damage and Violence.
- Living environment deprivation comprises two sub-domains: the 'indoors' which measures the quality of housing, and the 'outdoors' which contain two measures about air quality and road traffic accidents.



For the overall level of deprivation one of the LSOAs (809) falls within the lower half of all LSOAs in England. LSOA 808 falls within the least deprived 44% in England and the other LSOA in the Ward (807) falls in the least deprived 14% in England

For each LSOA within Burnham Lent Rise the table below shows the rank out all the SOAs in England, the deprivation percentage and the rank compared to the other LSOAs in the District for each domain.

Domain	LSOA	Rank out of 32,482 LSOAs in England 1 most deprived / 32,482 least deprived	Deprivation % 0 = most deprived 100 = least deprived	Rank out of LSOAs in District 1 = lowest rank 40= highest rank
Overall IMD Rank	807	28,180	86.76%	28/40
	808	18,497	56.95%	8/40
	809	15,922	49.02%	3/40
Income Deprivation	807	30,112L	92.70%	30/40
	808	16,051	49.42%	7/40
	809	14,785	45.52%	2/40
Employment Deprivation	807	30,770	94.73%	25/40
	808	21,844	67.25%	5/40
	809	14,599	44.94%	1/40
Health Deprivation & Disability	807	31,810	97.93%	25/40
	808	26,073	80.27%	6/40
	809	22,253	68.51%	3/40
Education, Skills & Training Deprivation	807	21,301	65.58%	12/40
	808	11,600	35.71%	2/40
	809	11,937	36.75%	3/40
Barriers to Housing & Services	807	23,204	71.44%	31/40
	808	19,194	59.09%	25/40
	809	24,167	74.40%	33/40
Crime & Disorder	807	7,942	24.45%	19/40
	808	7,333	22.58%	16/40
	809	5,188	15.97%	11/40
Living Environment Deprivation	807	19,739	60.77%	13/40
	808	18,922	58.25%	10/40
	809	20,484	63.06%	17/40

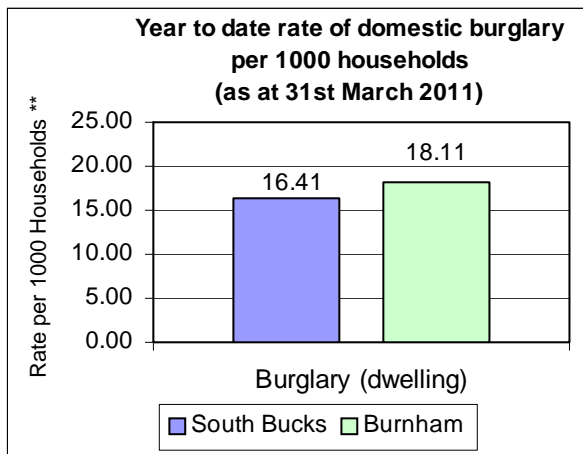
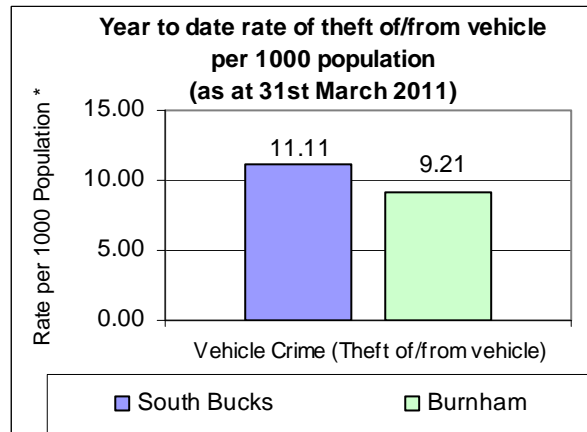
- For Income Deprivation there is clearly a difference between the LSOAs in Burnham Lent Rise, LSOA 807 is in the least deprived 8% in England, however LSOA 808 and 809 fall in the lower half of all LSOAs in England of income deprivation. Based on the scoring used to work out this ranking we can say that 11% of people are income deprived in LSOA 808 and 12% are income deprived in LSOA 809. Looking at a further breakdown for children aged 0-15 there is 20% living in income deprived households in LSOA 808 and 16% in SOA 809 and for older people aged 60 and over in LSOA 808 there is 14% living in income deprived households and in LSOA 809 there is 20%.
- For Employment Deprivation LSOA 807 falls in the least deprived 6% in England, LSOA 808 falls in the least deprived 33% and LSOA 809 falls in the lower half of all LSOAs in England in the most deprived 45% and is rank 1 out of the 40 LSOAs in the District.
- For Education, Skills & Training Deprivation two of the LSOAs fall in the most deprived 37% in England and rank 2nd and 3rd compared to the other LSOAs in the District.
- For Crime and Disorder all LSOAs in Burnham Lent Rise fall in the most deprived 25% in England with LSOA 809 falling in the most deprived 16% and ranking 11 out of 40 compared to the other LSOAs in the District.

## Crime

Source: Thames Valley Police Crime Summary for South Bucks District as at 31st March 2011

Information on crime levels is produced at the Police Neighbourhood level rather than by Ward. The information is based on year to date crime summaries produced by Thames Valley Police for the District.

The graph opposite shows that for the Burnham police neighbourhood area the rate of theft of or from a vehicle per 1,000 population is lower than the average for the District. Based on the previous years reporting, vehicle crime decreased by 29.8% for Burnham police neighbourhood area from 161 incidents in 2009/10 to 113 incidents in 2010/11.



The rate of domestic burglary per 1,000 households for Burnham police neighbourhood area is higher than the District average. The number of domestic burglaries for the Burnham police neighbourhood area has decreased from 96 in 2009/10 to 87 in 2010/11.

\* Population figures to work out the rates per 1000 population are based on the Civil Parish population estimates in South Bucks, mid-2009.

\*\* Household figures to work out the rates per 1000 households are based on the 2001 census data for Parishes and includes new housing completions per parish from 2001-2011. Data inaccuracy may occur due to boundary variations.

The table below shows the number of offences over the last three years for the Burnham police neighbourhood area and the District:

Number of offences	Burnham					South Bucks				
	2008/2009	2009/2010	% change	2010/2011	% change	2008/2009	2009/2010	% change	2010/2011	% change
Vehicle Crime Theft of/from vehicle)	162	161	-0.6%	113	-29.8%	1125	1003	-10.8%	740	-26.2%
Burglary (Dwelling)	102	96	-5.9%	87	-9.4%	601	511	-15.0%	432	-15.5%
All Crime	1155	1085	-6.1%	806	-25.7%	6323	5809	-8.1%	4843	-16.6%

Crime statistics for the District are produced by Thames Valley Police on a monthly basis and should be used for up to date trend information. There are some differences between the neighbourhood police area figures and the overall South Bucks figures due to different timelines in producing the report and crimes that are reclassified over the reporting period.

When using this Ward Profile please note that information is taken from a variety of sources and SBDC can not vouch for its accuracy & reliability. Many statistics come from the 2001 Census so this should be taken into account when utilising these figures as these are now 10 years old.

Some of the data contained in this profile is protected by various copyrights and cannot be re-used elsewhere without permission of the relevant copyright holder (please refer to source data for more information).