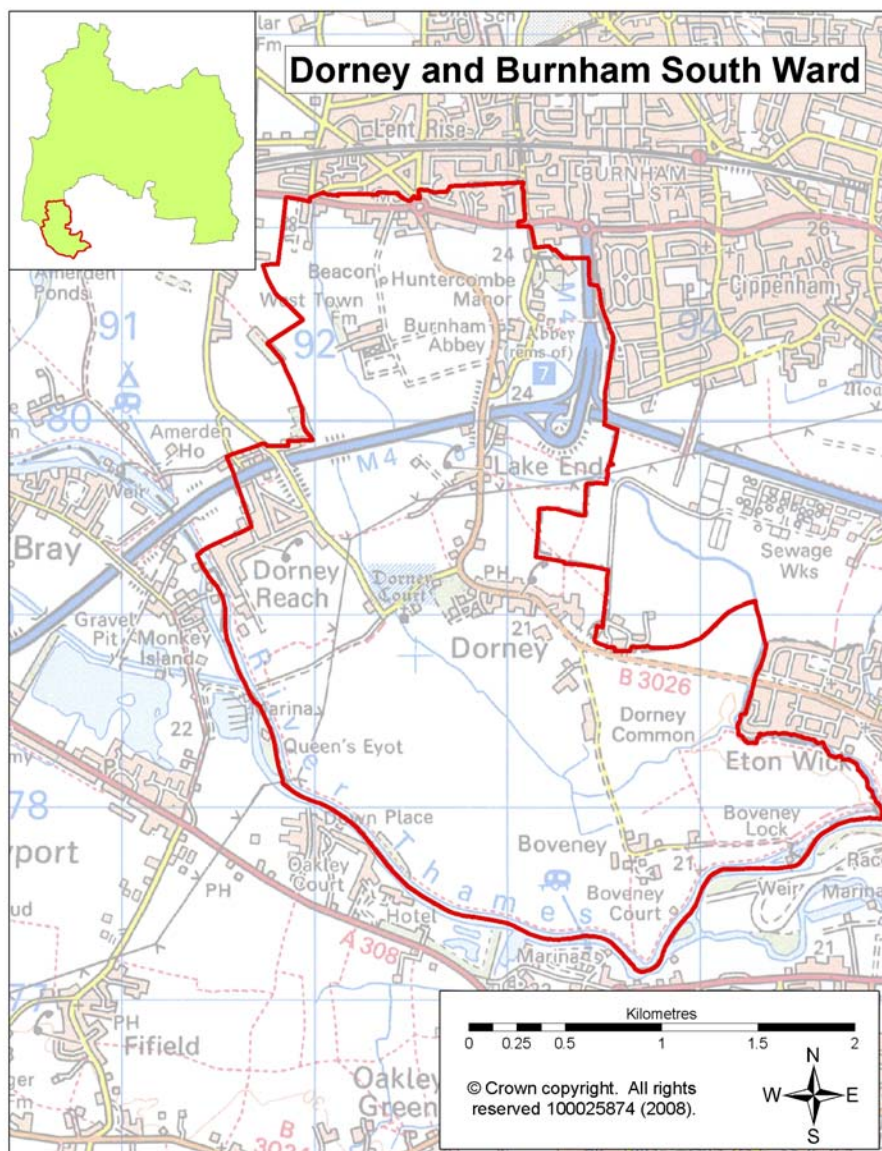


This ward profile aims to provide an overview of information about the Dorney & Burnham South Ward. The majority of this information is at ward level for Dorney & Burnham South, except for a small number of statistics which are only available at parish or district level.



Summary of key points:

- based on 2001 Census figures the working age population makes up 60.6% of the population of Dorney & Burnham South, this is 1.9% higher than the average for South Bucks;
- there are 10.6% of the population who are from Black & Minority Ethnic (BME) Groups this is higher than the 6.6% average for South Bucks;
- for Dorney & Burnham South 57.2% of the accommodation type for the Ward was detached housing which is over 14% higher than the District average;
- within the Ward there is a higher percentage of married couple households with children (3.5% higher) and a lower percentage of single non-pensionable households (4.1 lower) compared to the District average;
- based on Acorn Categories Dorney & Burnham South has 82.6% of 'Wealthy Achiever' households which is 22.3% higher than the District average;
- within Dorney & Burnham South 29.9% of people have no qualifications which is 3.2% higher than the South Bucks average but almost 5.9% lower than the Great Britain average;
- based on the 2010 Indices of Deprivation for the overall level of deprivation Dorney & Burnham South is within the least deprived 18% in England;
- the rate of burglary per 1000 households for the Burnham and the Taplow and Dorney Police Neighbourhood Area is higher than the District average however both Parishes have seen a decrease in the number of domestic burglaries.

Population

Age structure

Source: Office of National Statistics—mid year population estimates 2009 ward & district level

In 2009 the population of Dorney & Burnham South Ward was 1,635 with males making up 49.5% of the population and females making up 50.5%. The age breakdown of the Ward's population is shown in the table.

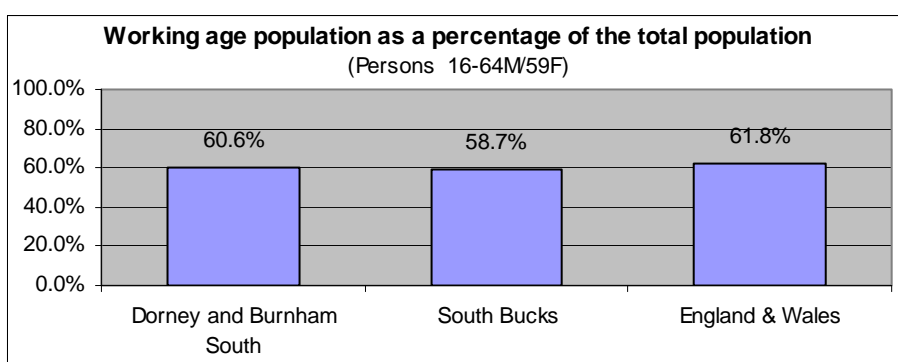
	Total	0-4	5-14	15-19	20-44	45-64	65+
Dorney and Burnham South	1,635	4.5%	11.9%	5.5%	30.7%	29.5%	17.9%
South Bucks	66,600	5.7%	12.5%	5.7%	29.7%	27.9%	18.3%
England & Wales	-	6.1%	11.3%	6.4%	34.5%	25.3%	16.4%

- There were 357 people within the 0-19 age group living within the Ward which contributes 21.8% to the population of Dorney & Burnham South; this is lower than the average of 23.9% for South Bucks.
- The 65 and over age group make up 17.9% of the Ward this is slightly lower than the average of 18.3% for South Bucks but 1.5% higher than the England & Wales average.
- There was a 4.1% increase in population in the ward from 2005-2009 based on mid year estimates, slightly lower than the average increase for South Bucks of 4.7%.

Working Age Population

Source: Office of National Statistics—2010 Ward Population Estimates, mid-2009 (experimental statistics) - working age

Based on mid-2009 figures the working age population makes up 60.6% of the population of Dorney & Burnham South, this is 1.9% higher than the average for South Bucks but 1.2% lower than the average for England & Wales.



Population Projections

Source: 2008-based sub national population projections, Office for National Statistics/Bucks Strategic Partnership (BSP) population projections October 2010

National population projections are not available at ward level but based on the latest national population projections South Bucks District is predicted to have a population increase of 25.9% over the next 25 years from 65,700 to 82,700 in 2033. The projections are trend based which means assumptions for future levels of births, deaths and migration are based on observed levels (they do not take into account any future policy changes that have not yet occurred). Within these figures based on projections for the district from 2008 to 2033:

- the 0-19 age group is predicted to rise by 20.1% (England 10.4%);
- the 20-64 age group by 15.5% (England 8.3%); and
- the 65+ age group by 63.9% (England 65.3%).

Local population projections at district and ward level (commissioned by Bucks CC) have been produced which take account of additional datasets including housing provision in the area and other local inputs. These put the population at 67,550 in 2026 (a difference of over 11,000 from the national projections for 2026). The projections cover a different time period and the age group breakdown is different. The significant variances between the projections means caution needs to be applied when using these figures as a realistic figure is more likely to fall somewhere between the two predictions (further information about both sets of projections can be found on KnowledgeSource).

Based on the BSP projections for Dorney & Burnham South the estimated population is forecasted to rise from 1,600 in 2009 to 1,650 in 2026 an increase of 3.1%. Looking at a split down by age group based on projections for the ward from 2009 to 2026:

- the 0-17 age group is predicted to stay at 350 (no change)
- 18—retired* age group is predicted to rise from 900 to 850 (-5.6%)
- retired* + age group is predicted to rise from 400 to 500 (25%)

(*retired is 60 for females and 65 for males)

Population Density

Source: Table UV02, ONS, Census 2001

The number of persons per hectare in Dorney & Burnham South based on the 2001 Census information was 2.04, this is lower than the average of 4.38 for South Bucks and 3.45 for England and Wales.

Ethnicity

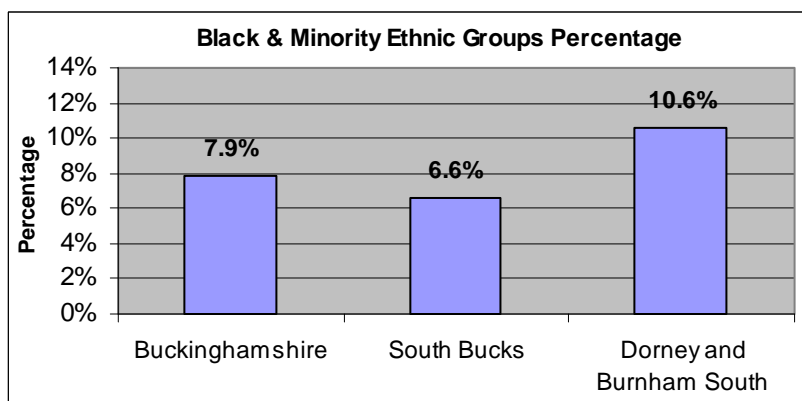
Source: Table KS06 & UV08, Census 2001/ Nomisweb standard tables, ONS.

Resident Population Estimates by Ethnic Group (experimental), 2009, Office for National Statistics.

Based on 2001 Census information 83.7% of the population of Dorney & Burnham South Ward stated their ethnicity as White British; this is lower than the 86.5% average for South Bucks. 4.0 of the population of the Ward declare their ethnicity as Other-White, lower than the 5.1% average for South Bucks.

There are 10.6% of the population who are from Black & Minority Ethnic (BME) Groups this is higher than the 6.6% average for South Bucks. This is split down into the following BME Groups.

BME mix	Percentage
Mixed	1.4%
Asian or Asian British	7.7%
Black or Black British	0.5%
Chinese or other ethnic group	1.1%



The BME groups tend to be higher in the younger age group as the split below shows:

- For the 0-19 age group 15.3% of the population are from BME Groups (10.2% South Bucks average)
- For the 20-64 age group 12.3% of the population are from BME groups (6.7% South Bucks average)
- For the 65 and over age group 3.3% of the population are from BME groups (1.5% South Bucks average)

Looking at the change from the 1991 to 2001 Census for South Bucks District, 3.3% identified with one of the non-white ethnic categories in 1991 compared to 6.6% in 2001, an increase of 3.3%. Based on experimental population estimates for 2009 13.1% of the population in South Bucks were from a non-white ethnic group.

12.0% of the population of Dorney & Burnham South were born outside of the UK which is slightly lower than the District average of 12.2%. The Ward population born outside the UK are predominantly from Asia (4.4%), North America (2.2%) and Africa (1.2%).

Religion

Source: Table KS07, ONS, Census 2001

Based on 2001 Census information 72.3% of the population of Dorney & Burnham South Ward stated their religion as Christianity; this is lower than the 75.6% average for South Bucks. 12.2% stated that they had no religion which is slightly lower than the District average.

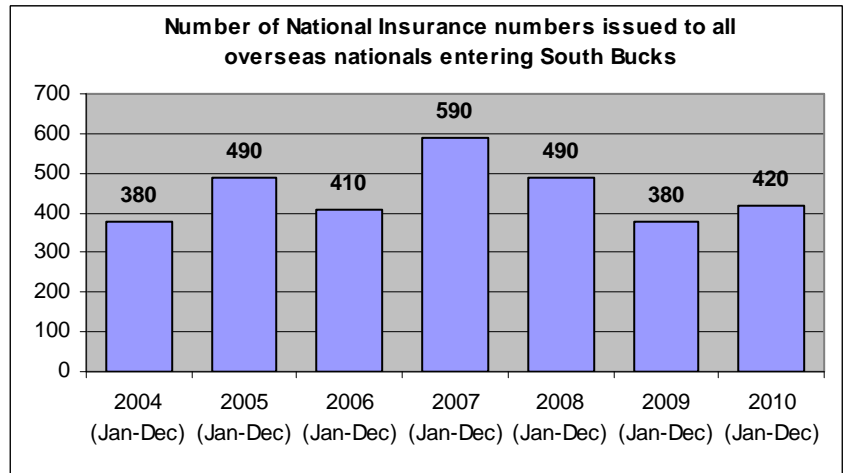
People stating religion as:	Dorney & Burnham South	South Bucks	England and Wales
Christian	72.3%	75.6%	71.8%
Buddhist	0.3%	0.3%	0.3%
Hindu	1.6%	1.2%	1.1%
Jewish	0.5%	0.5%	0.5%
Muslim	1.4%	1.1%	3.0%
Sikh	4.3%	1.6%	0.6%
Other religions	0.3%	0.3%	0.3%
No religion	12.2%	12.5%	14.8%
Religion not stated	7.2%	6.9%	7.7%

Migrant Workers

Source: DWP 2010, Local Area Migration Indicators table from Office of National Statistics

Overseas nationals obtain a National Insurance (NI) Number before they enter into employment or upon starting work, so registrations data can be a good indication of new arrivals who are economically active. (Some foreign nationals do obtain a NI number but do not take up employment e.g. refugees will need an NI number but will not all be economically active.)

These figures are only available at district level and do not go down to ward level.



The top 6 nationalities for overseas nationals who are issued a National Insurance number entering South Bucks in 2010 were Poland, India, Australia, Germany, Italy and Spain.

Environment

Land Use Statistics

Source: Generalised Land Use Database Statistics 2005, Communities and Local Government (last updated Jan-07)

The following data is taken from experimental statistics from January 2005 from the generalised land use database. The total area of all land types for Dorney & Burnham South is 767 hectares which makes up 5.4% of the land in the District. The main type of land use is greenspace and makes up 78.1% of the land use for the Ward. Communities and Local Government consider the 2005 figures to be the definitive land use statistics. No further work is planned on the Generalised Land Use Database.

Type of land use	Hectares	% of ward area that land use type makes up	% of district that land use type makes up
Area of Domestic Buildings	6.3	0.8%	1.7%
Area of Non Domestic Buildings	3.7	0.5%	0.8%
Area of Road	21.5	2.8%	4.2%
Area of Path	1.7	0.2%	0.2%
Area of Rail	0.0	0.0%	0.2%
Area of Domestic Gardens	44.5	5.8%	11.2%
Area of Greenspace	599.4	78.1%	77.5%
Area of Water	73.3	9.6%	2.0%
Area of Other Land Uses	16.8	2.2%	2.2%
Area of Unclassified Land	0	0.0%	0.0%

Based on figures from the Council's 2009/10 Annual Monitoring Report:

For Dorney Parish there were:

- 504.3 hectares of land designated as Area of Attractive Landscape (designation by Bucks CC)
- 2 conservation areas within Dorney Parish and 44 listed buildings

For Burnham Parish there were:

- 1026.2 hectares of land designated as Area of Attractive Landscape (designation by Bucks CC)
- 2 conservation areas within Burnham Parish and 126 listed buildings

Housing

Household Tenure

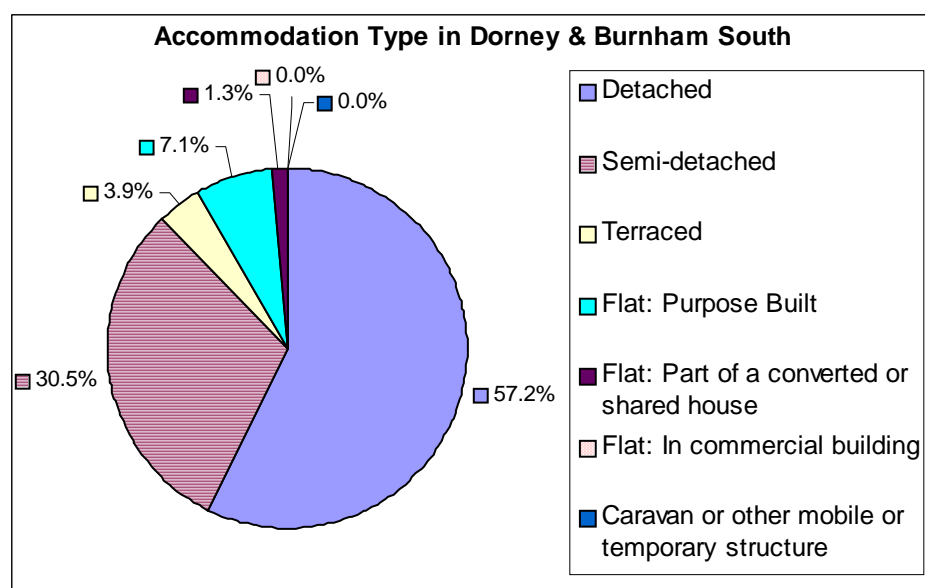
Source: Table KS18, ONS, Census 2001

Within Dorney & Burnham South there is a high percentage of owner occupied housing which makes up 82.5% of the household tenure within the Ward, this is 4.2% higher than the District average and 13.6% higher than the England & Wales average.

Household Tenure	Dorney & Burnham South	South Bucks	England & Wales
Owner Occupied	82.5%	78.0%	68.9%
Social Rented: Council/ Housing Association/ Registered Social Landlord	6.6%	12.6%	19.2%
Private Rented: Private landlord or letting agency	6.8%	6.1%	8.7%
Other	4.2%	3.3%	3.2%

Accommodation Type

Source: Table KS16, ONS, Census 2001



Based on the 2001 Census there were 595 households in Dorney & Burnham South, 96.6% of these were lived in and 3.4% were either vacant or used as a second residence or holiday accommodation.

57.2% of the accommodation type for the Ward was detached housing which is over 14% higher than the District average and just over higher than the England & Wales average.

Household Composition

Source: Table KS20, ONS, Census 2001

The table below shows the household composition in 2001 for Dorney & Burnham South compared to the average for the District. The main difference to the District average is there is a higher percentage of married couple households with children (3.5% higher) and a lower percentage of single non-pensionable households (4.1 lower).

⇒ There were 10 lone parent households with dependent children.

Household Composition	Dorney & Burnham South (Number)	Dorney & Burnham South (%)	South Bucks District average (%)	Difference
Single non-pensionable households	44	7.6%	11.7%	-4.1%
Single pensioner	77	13.4%	14.3%	-0.9%
All other pensioner households	68	11.8%	11.9%	-0.1%
Married couple households: No children	88	15.3%	14.9%	0.4%
Married couple households: With children	185	32.1%	28.6%	3.5%
Cohabiting couple households: No children	15	2.6%	4.1%	-1.5%
Cohabiting couple households: With children	21	3.6%	2.6%	1.0%
Lone parent households: With dependent children	10	1.7%	3.3%	-1.6%
Lone parent households: All children non-dependent	15	2.6%	2.8%	-0.2%
Student households	0	0.0%	0.0%	0.0%
Other households: With dependent children	18	3.1%	2.3%	0.8%
Other households: Other	35	6.1%	3.3%	2.7%

Council Tax Banding

Source: Valuation list for the authority on 4th Oct 2010

Council tax information can provide an overview of house value within an area, however whilst they provide an overview it should be noted that these bandings were created several years ago. This information is only available at a parish level rather than by ward. The percentage of houses falling in the A-C bands (the lower council tax bands) for Dorney Parish is 2.0% lower than the District average and for Burnham Parish is 6.3% higher than the District average.

Parish	Dwelling Count	Bands A-C	Bands D-F	Bands G-H
Dorney	308	15.6%	48.1%	36.4%
Burnham	4898	23.9%	61.6%	14.5%
South Bucks District	27628	17.6%	50.8%	31.6%

House prices

Source: DCLG tables from Land Registry data—2010

The average house price in 2010 in South Bucks based on house sales was £536k over 47% higher than the average for Buckinghamshire. The average for Chiltern was £457,202, Wycombe was £338,294 and Aylesbury Vale was £273,022.

Acorn Data

Source: Acorn Data 2010, produced by CACI.

Acorn Data provides useful data about the characteristics of people based on the postcode in which they live. Using data from a range of sources, every postcode is classified into one of 5 categories, which split down into further groups. This data provides useful information to start to understand the feelings, behaviours and expectations of each group. N.B All category names are already defined on the database.

Area	Wealthy Achievers	Urban Prosperity	Comfortably Off	Moderate Means	Hard Pressed	No Classification
Dorney and Burnham South	82.6%	4.3%	10.9%	0.0%	0.0%	2.2%
South Bucks	60.3%	10.9%	21.6%	2.1%	3.8%	1.3%

Looking at the five main categories it shows that Dorney & Burnham South has a higher percentage of 'Wealthy Achiever' households than the District average by 22.3%. It also shows that 0% of households fall within the 'Moderate Means' or 'Hard Pressed' categories. The tables below provide a detailed split down into smaller groupings which provide an idea of the type of households within each category.

Category 1 - Wealthy Achievers	Ward %	District %
Wealthy Mature Professionals	37.0%	24.2%
Villages with Wealthy Commuters	8.7%	14.4%
Well Off Managers	28.3%	4.8%
Affluent Greys	0.0%	6.7%
Flourishing Families	8.7%	10.3%

Category 2 - Urban Prosperity	Ward %	District %
Urban Professionals	4.3%	10.9%

Category 3 - Comfortably Off	Ward %	District %
Secure Families	6.5%	13.3%
Settled Suburbia//Prudent Pensioners	4.3%	8.4%

Category 4 - Moderate Means	Ward %	District %
Moderate Means	0.0%	2.1%

Category 5 - Urban Prosperity	Ward %	District %
Hard Pressed	0.0%	3.8%

Unclassified	Ward %	District %
Unclassified	2.2%	1.3%

The main type of grouping within this Ward are 'Wealthy Mature Professionals'. The suggested characteristics of this group are that their household income of is extremely high. Their affluence and middle aged family profile may be linked to the importance they place on further education and secondary school education, where there is a strong engagement to attain qualifications. Public and private transport is important, with higher rates of car ownership and commuting by train/tube, but people are also more likely to work from home. People are less satisfied with transport issues than average. Interest in charity work is higher than average, as is their interest in health care, but lifestyle choices can be poor.

Employment & Education

Economically active

Source: CAS028, ONS, Census 2001

Based on information from the 2001 Census 78.3% of the working age population within the Ward are economically active, this is similar to the average for the District. The female and male breakdown shows that the Ward breakdown is close to the District average.

	Dorney & Burnham South	South Bucks	Great Britain
Economically active (% of working age population)			
All People	78.3%	77.9%	74.0%
Males	88.2%	87.7%	81.4%
Females	68.8%	68.6%	66.8%
Unemployed (% of economically active)			
All People	2.2%	3.0%	5.7%

2.2% of the economically active population are unemployed in Dorney & Burnham South which is 0.8% lower than the District average.

Based on latest estimates the economically active rate for South Bucks is 76.5% and the rate for Great Britain is 76.2% (source: Annual Population Survey Jan - Dec 2010).

Hours worked

Source: CAS029, ONS, Census 2001

The table opposite shows that 79.6% of the people in employment within the Ward work full-time hours and 20.4% work part-time hours. Looking at the split down by sex, 93% of males worked full time and 7% worked part time and 63.3% of females worked full time and 36.7% worked part time.

	Dorney & Burnham South	South Bucks	Great Britain
Hours worked - for all people in employment			
Full time	79.6%	77.4%	75.9%
Part time	20.4%	22.6%	24.1%

Employment by Occupation

Source: CAS033, ONS, Census 2001

For the population of Dorney & Burnham South the top 3 occupation groups are:

- Managers and Senior Officials who make up 25.2% (South Bucks Average 25.8%)
- Associate Professional and Technical who make up 15.1% (South Bucks Average 15.4%)
- Administrative & Secretarial who make up 14.2% (South Bucks Average 14.0%)

These 3 occupation groups contribute 54.5% of occupations for the Ward.

Jobseeker's Allowance (JSA) Claimants

Source: ONS claimant count with rates and proportions, Nomisweb (June 2011)

Within Dorney & Burnham South Ward there were 9 people claiming Job Seekers Allowance based on a quarterly snapshot from June 2011. This accounts for 0.9% of the working age population which is slightly lower than the South Bucks average of 1.3% and lower than the Great Britain average of 3.7%.

Education

Source: CAS032, ONS, Census 2001

Within Dorney & Burnham South 29.9% of people have no qualifications which is 3.2% higher than the South Bucks average but 5.9% lower than the Great Britain average. There is a lower amount of people with higher level qualifications than the District average.

	Dorney & Burnham South (numbers)	Dorney & Burnham South %	South Bucks %	Great Britain %
No qualifications or level unknown ¹	350	29.9%	26.7%	35.8%
Lower level qualifications ²	528	45.1%	44.6%	43.9%
Higher level qualifications ³	292	25.0%	28.6%	20.4%

¹ People without any academic, vocational or professional qualification or level unknown

² Qualifications equivalent to Level 1 to 3 of the National Key Learning Targets (i.e. GCSE's, O-Levels, A-Levels, NVQ Level 1-3)

³ Qualifications of Level 4 & above (i.e. first/higher degrees, NVQ Level 4 & 5, HND, HNC & other professional qualifications)

Travel

Distance Travelled to Work

Source: Table UV35, ONS, Census 2001

The table below shows the distance travelled to work for all people aged 16 to 74 who were in employment based on information collected in the 2001 Census.

	Dorney & Burnham South	South Bucks	South East	England & Wales
Works mainly at or from home	14.0%	13.1%	9.9%	9.2%
Less than 2km	10.7%	12.2%	20.4%	20.0%
2km to less than 5km	21.7%	15.3%	17.6%	20.0%
5km to less than 10km	15.7%	19.5%	15.2%	18.2%
10km to less than 20km	16.6%	16.4%	13.7%	15.2%
20km to less than 40km	11.8%	14.9%	10.3%	7.7%
40km and over	4.0%	3.3%	7.5%	4.9%
No fixed place of work	5.1%	4.9%	5.1%	4.4%
Other	0.4%	0.4%	0.3%	0.3%

Within Dorney & Burnham South there were 32.4% of people travelling less than 5km to work which is 4.9% higher than the District average. 15.8% travel over 20km to work which is 2.4% lower than the District average.

Method of Travel to Work

Source: Table UV39, ONS, Census 2001

The table below shows the method of travel to work for the usual resident population aged 16 to 74 who were in work based on information collected in the 2001 Census.

	Dorney & Burnham South	South Bucks	South East	England & Wales
Driving a car or van	65.5%	65.0%	59.2%	55.2%
On foot	4.5%	5.9%	9.9%	10.0%
Works mainly at or from home	13.9%	13.1%	9.9%	9.2%
Bus, minibus or coach	1.9%	1.5%	4.4%	7.4%
Passenger in a car or van	5.0%	4.3%	5.7%	6.3%
Train	5.2%	5.8%	5.6%	4.1%
Underground, metro, light rail or tram	0.4%	1.3%	0.2%	3.0%
Bicycle	2.2%	1.5%	3.1%	2.8%
Motorcycle, scooter or moped	0.4%	0.8%	1.1%	1.1%
Other	1.0%	0.8%	0.9%	1.0%

Within Dorney & Burnham South the method of travel to work was fairly similar to the average for the District. There were 2.2% using a bicycle to travel to work which is slightly higher than the District average but there were fewer people travelling on foot.

Car and Van Ownership

Source: Table UV62, ONS, Census 2001

The table below shows that in 2001 that 10.7% of households in Dorney & Burnham South did not own a car or van which was a lot lower than the average for England and Wales. 20.3% of households owned 3 or more cars or vans which was 6.3% higher than the average for the District.

	Dorney & Burnham	South Bucks	South East	England & Wales
No car or van	10.7%	11.1%	19.4%	26.8%
1 car or van	30.8%	36.0%	42.6%	43.8%
2 cars or vans	38.1%	38.9%	29.6%	23.5%
3 or more cars or vans	20.3%	14.0%	8.4%	5.9%

Health

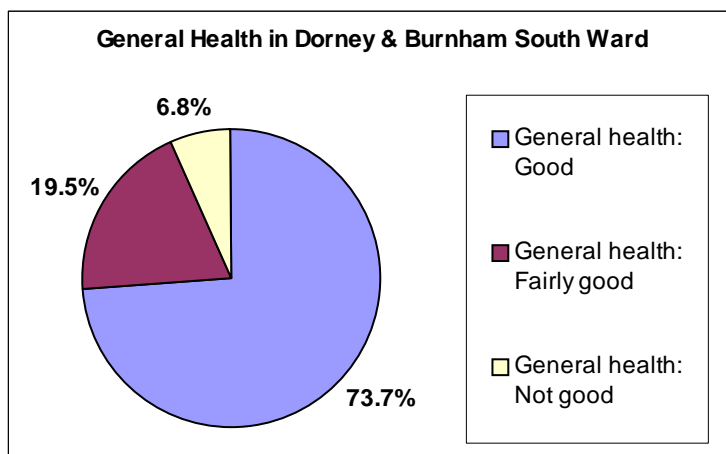
General Health & Limiting Long-term Illness

Source: Table KS08, ONS, Census 2001

73.7% of people within Dorney & Burnham South declare themselves as having good health, this is 1.6% lower than the average for South Bucks. The Ward percentage is 5.1% higher than the England and Wales average of 68.6% who declared they had good health.

People declaring themselves as having not good general health in the Ward is higher than the average for the District but lower than the England and Wales average.

In 2001 there was an estimated 13.2% of the population of Dorney & Burnham South who had a limiting long-term illness which equates to 203 people, this percentage is similar to the District average of 13.1% but lower than the average for England and Wales which is 18.2%.



Provision of Unpaid Care

Source: Table KS08, ONS, Census 2001

Within the Dorney & Burnham South Ward 11% of the population provide some form of unpaid care, this equates to 170 people. The split down of this is as follows:

- 74.1% (126 people) were providing 1-19 hours unpaid care a week
- 14.1% (24 people) were providing 20-49 hours unpaid care a week
- 11.8% (20 people) were providing 50 or more hours unpaid care a week

Disability Living Allowance Claimants

Source: Department of Work and Pensions, August 2010

Disability Living Allowance is payable to people who are disabled and who have personal care needs, mobility needs or both. It consists of two components, the care component for people who need help with personal care and the mobility component for people who need help with getting around.

Within Dorney & Burnham South Ward there were 25 people claiming Disability Living Allowance based on figures from August 2010 which accounted for about 1.5% of the total claimants for South Bucks. The age breakdown of claimants is shown in the table opposite. 10 of the claimants were male and 15 were female.

Of the people claiming disability living allowance:

- 0 had a claim duration for less than 12 months,
- 0 had a claim duration for between 1 & 2 years,
- 5 had a claim duration which was between 2 & 5 years
- 20 had a claim duration which was 5 years and over

Claimants Age	Count of Claimants
Claimants Aged Under 16	5
Claimants Aged 16-24	5
Claimants Aged 25-49	5
Claimants Aged 50-59	5
Claimants Aged 60-69	5
Claimants Aged 70 and Over	0

Incapacity Benefit/Severe Disablement Allowance is a benefit provided to people due to them being incapable of work through illness or disability. This includes Sickness/Invalidity Benefit and Severe Disablement and Incapacity Benefit. Within the Dorney & Burnham South Ward there were 10 people claiming this type of benefit, all of which were Incapacity Benefit Claimants.

Data has been rounded to base 5 for all figures in order to protect small counts.

Deprivation

Source: *Indices of Multiple Deprivation 2010, CLG.*

The Indices of Multiple Deprivation 2010 (IMD 2010) is a measure of deprivation at the small area level—Lower Super Output Area (LSOA). England is split into 32,482 LSOAs, LSOAs have a minimum population of 1000, and overall average population of 1500, and were ranked to create the IMD. All of the LSOAs in England are ranked, the LSOA ranked 1 by the IMD 2010 is the most deprived and the LSOA ranked 32,482 is the least deprived.

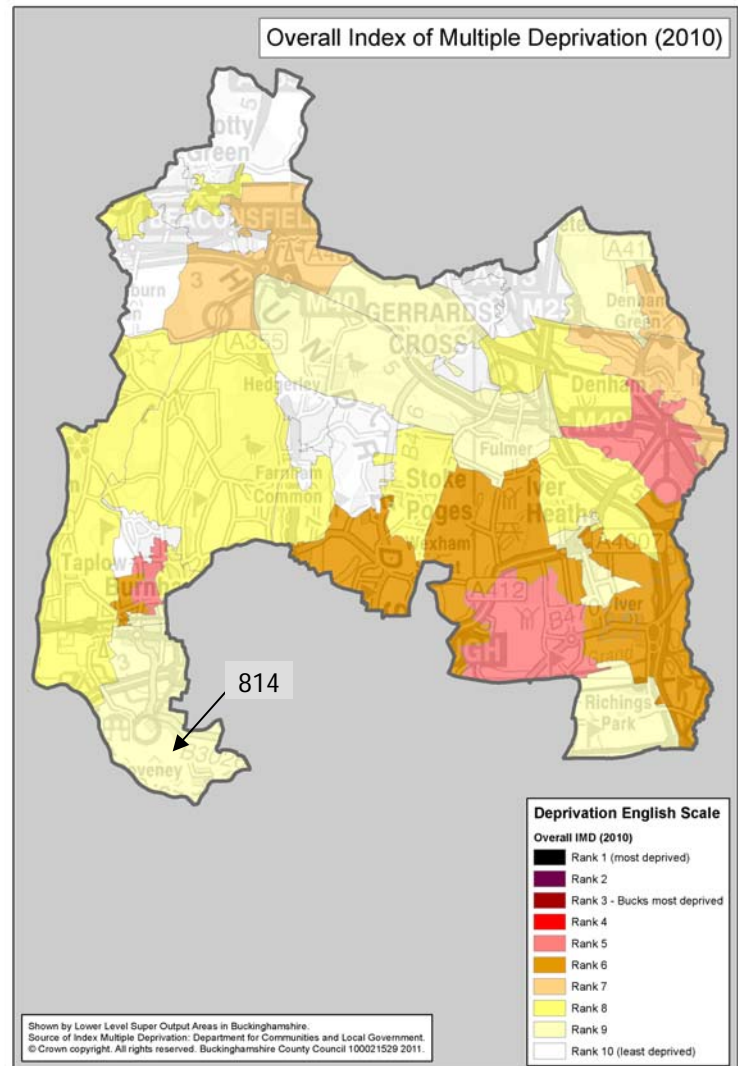
- Dorney & Burnham South Ward is made up of 1 LSOA (814 —location shown on the map).

The IMD model is based on 7 distinct dimensions of deprivation which are then given a weighting to work out an overall ranking for deprivation as the table below shows.

Domain	Weighting
Income Deprivation	22.5%
Employment Deprivation	22.5%
Health Deprivation & Disability	13.5%
Education, Skills & Training Deprivation	13.5%
Barriers to Housing and Services	9.3%
Crime & Disorder	9.3%
Living Environment Deprivation	9.3%

The different domains

- Income Deprivation covers a range of indicators including adults and children in Income Support/ Income-Based JSA/ Pension Credit/ certain child tax credit families and Asylum seekers receiving subsistence/accommodation support.
- Employment Deprivation measures involuntary exclusion of working age population from the labour market. This includes indicators on recipients of Jobseekers Allowance, Incapacity Benefits, Severe Disablement Allowance, claimants of employment and support allowance, participants in the New Deal for under 25s, over 25s and new parents.
- Health Deprivation and Disability domain measures rates of poor health, early mortality and disability in an area and covers the entire age range, it includes indicators on years of potential life lost, comparative illness and disability ratio, proportion of adults under 60 suffering from mood or anxiety disorders and measures of acute morbidity.
- Education Skills and Training Deprivation covers two sub-domains: one relating to education deprivation for children/young people in the area, and one relating to lack of skills and qualifications among a sub-set of the working age population.
- Barriers to Housing and Services domain splits into two sub-domains: geographical barriers which looks at road distance to a GP surgery/general stores or supermarket/primary school and to a Post office; wider barriers includes issues relating to access to housing such as affordability and household overcrowding.
- Crime domain measures the rate of recorded crime for four major crime types, representing the risk of personal and material victimisation at a small area level. These include Burglary, Theft, Criminal Damage and Violence.
- Living environment deprivation comprises two sub-domains: the 'indoors' which measures the quality of housing (housing in poor condition and without central heating), and the 'outdoors' which contains two measures about air quality and road traffic accidents.



For the overall level of deprivation Dorney & Burnham South is within the least deprived 18% in England.

For each LSOA within Dorney & Burnham South the table below shows the rank out all the LSOAs in England, the deprivation percentage and the rank compared to the other LSOAs in the District for each domain.

Domain	LSOA	Rank out of 32,482 LSOAs in England 1 most deprived / 32,482 least deprived	Deprivation % 0 = most deprived 100 = least deprived	Rank out of LSOAs in District 1 = lowest rank 40= highest rank
Overall Deprivation	814	26,676	82.13%	23/40
Income Deprivation	814	29,260	90.08%	28/40
Employment Deprivation	814	29,492	90.79%	22/40
Health Deprivation & Disability	814	30,297	93.27%	19/40
Education, Skills & Training Deprivation	814	25,425	78.27%	16/40
Barriers to Housing & Services	814	11,465	35.30%	12/40
Crime & Disorder	814	7,481	23.03%	18/40
Living Environment Deprivation	814	23,075	71.04%	24/40

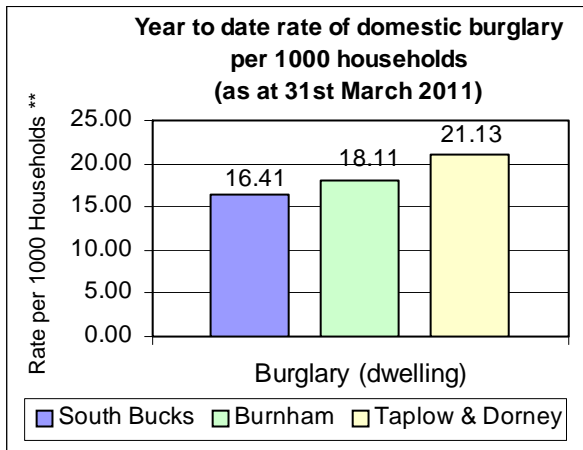
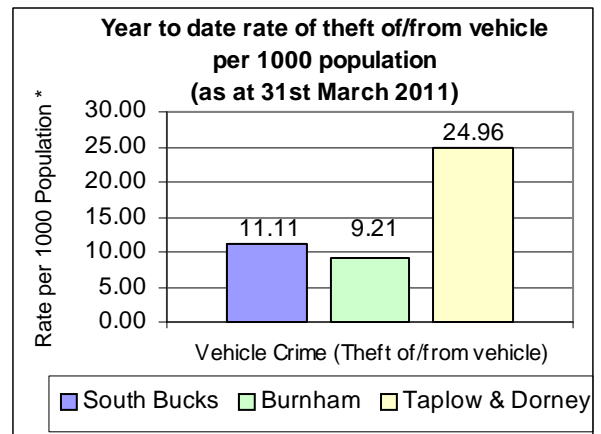
- For Income Deprivation Dorney & Burnham South falls within the least deprived 10% in England. Based on the scoring used to work out this ranking we can say that about 4% of people are income deprived in this area.
- For Employment Deprivation the LSOA falls in the least deprived 10% in England and for Education, Skills & Training Deprivation within the least deprived 22% in England.
- For Health Deprivation & Disability the LSOA falls in the least deprived 7% in England.
- Dorney & Burnham South falls in the bottom half of all LSOAs in England for Barriers to Housing & Services in the most deprived 36% and ranks 12 out of 40 when compared to the other LSOAs in the District.
- For Crime and Disorder Dorney & Burnham South falls in the most deprived 24% in England.
- For the Living Environment Deprivation the LSOA falls within the least deprived 29% in England and ranks 24 out of 40 when compared to the other LSOAs in the District.

Crime

Source: Thames Valley Police Crime Summary for South Bucks District as at 31st March 2011

Information on crime levels is produced at the Police Neighbourhood level rather than by Ward. The information is based on year to date crime summaries produced by Thames Valley Police for the District. Due to the neighbourhood group split this page includes information on the parishes of Taplow/Dorney and Burnham.

The graph opposite shows that for the Taplow/Dorney & Burnham police neighbourhood area the rate of theft of or from a vehicle per 1,000 population is lower for Burnham but higher than the average for the District for Taplow/Dorney. Based on the previous years reporting, vehicle crime decreased by 4.5% for Taplow/Dorney area from 67 incidents in 2009/10 to 64 incidents in 2010/11 and decreased by 29.8% from 161 to 113 for Burnham.



The rate of domestic burglary per 1,000 households for the Burnham area and the Taplow/Dorney police neighbourhood area is higher than the District average. The number of domestic burglaries for Taplow/Dorney area decreased from 28 in 2009/10 to 24 in 2010/11 and for Burnham from 96 in 2009/10 to 87 in 2010/11.

* Population figures to work out the rates per 1000 population are based on the Civil Parish population estimates in South Bucks, mid-2009. ** Household figures to work out the rates per 1000 households are based on the 2001 census data for Parishes and includes new housing completions per parish from 2001-2011. Data inaccuracy may occur due to boundary variations.

The table below shows the number of offences over the last three years for the Taplow/Dorney & Burnham police neighbourhood area and the District:

							South Bucks				
Number of offences		2008/2009	2009/2010	% change	2010/2011	% change	2008/2009	2009/2010	% change	2010/2011	% change
Taplow & Dorney	Vehicle Crime Theft of/from vehicle)	55	67	21.8%	64	-4.5%	1125	1003	-10.8%	740	-26.2%
	Burglary (Dwelling)	23	28	21.7%	24	-14.3%	601	511	-15.0%	432	-15.5%
	All Crime	274	265	-3.3%	255	-3.8%	6323	5809	-8.1%	4843	-16.6%
Burnham	Vehicle Crime Theft of/from vehicle)	162	161	-0.6%	113	-29.8%					
	Burglary (Dwelling)	102	96	-5.9%	87	-9.4%					
	All Crime	1155	1085	-6.1%	806	-25.7%					

Crime statistics for the District are produced by Thames Valley Police on a monthly basis and should be used for up to date trend information. There are some differences between the neighbourhood police area figures and the overall South Bucks figures due to different timelines in producing the report and crimes that are reclassified over the reporting period.

When using this Ward Profile please note that information is taken from a variety of sources and SBDC can not vouch for its accuracy & reliability. Many statistics come from the 2001 Census so this should be taken into account when utilising these figures as these are now 10years old.

Some of the data contained in this profile is protected by various copyrights and cannot be re-used elsewhere without permission of the relevant copyright holder (please refer to source data for more information).