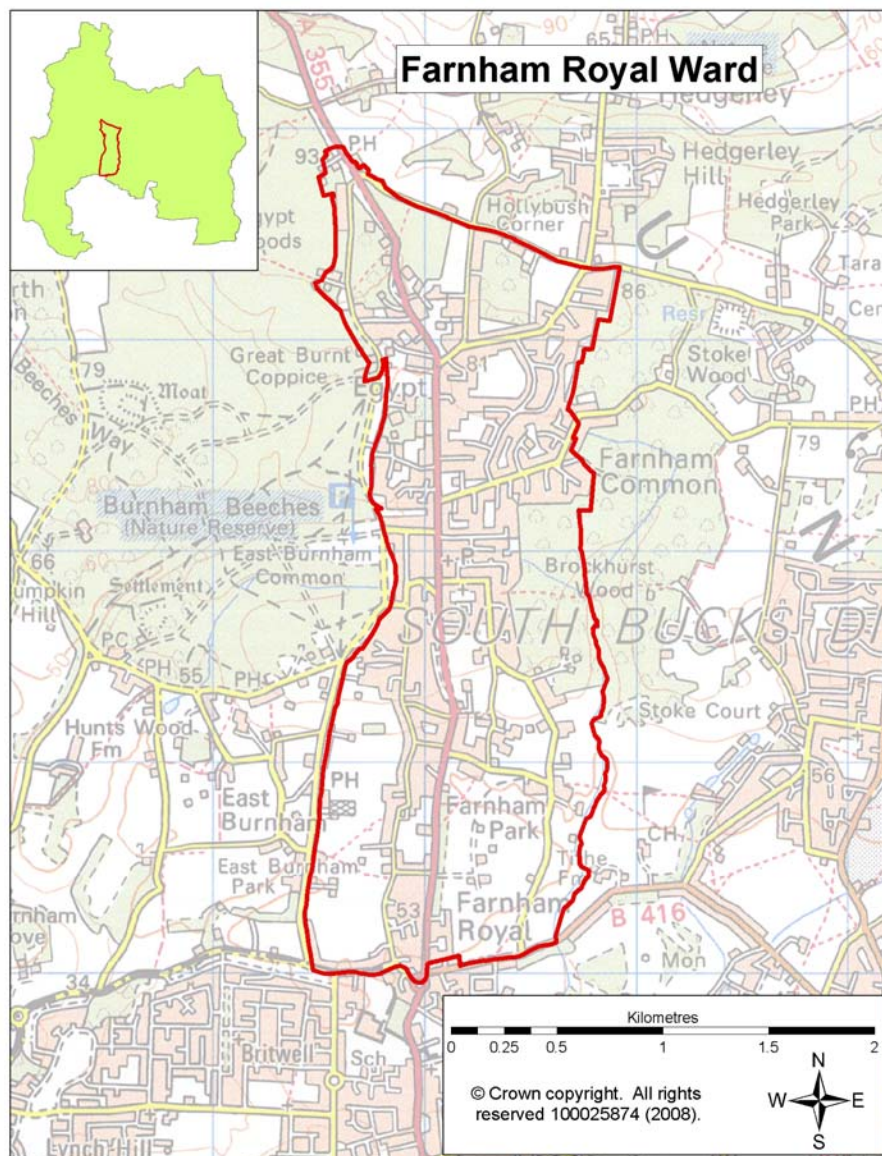


This ward profile aims to provide an overview of information about the Farnham Royal Ward. The majority of this information is at ward level for Farnham Royal, except for a small number of statistics which are only available at parish or district level.



## Summary of key points:

- there were 1,314 people within the 0-19 age group living within the Ward which contributes 25.2% to the population of Farnham Royal; this is higher than the average of 23.9% for South Bucks;
- the number of persons per hectare in Farnham Royal based on the 2001 Census information was 12.44, this is higher than the average population density of 4.38 for South Bucks and 3.45 for England and Wales;
- 56.7% of the accommodation type in Farnham Royal was detached housing which is almost 14% higher than the District average. Terraced housing makes up 17.8% of the accommodation type which is 4.2% higher than the District average;
- based on Acorn Categories Farnham Royal has 74.3% of 'Wealthy Achiever' households which is 14% higher than the District average;
- within Farnham Royal 33.9% of people aged 16 to 74 have higher level qualifications which is almost 5.3% higher than the average for South Bucks. 22.5% have no qualifications which is 4.2% lower than the South Bucks average and 13.3% lower than the Great Britain average;
- 58.9% of households had 2 or more cars or vans which was 6% higher than the District average and 29.5% higher than the England & Wales average;
- the rate of domestic burglary per 1,000 households for Farnham Police Neighbourhood area is higher than the average rate for the District. The number of domestic burglaries for Farnham Royal Parish has seen a slight increase of 3.8% over the year from 50 to 52 incidents however this is significantly down on previous years figures.

## Population

### Age structure

Source: Office of National Statistics—mid year population estimates 2009 ward & district level

In 2009 the population of Farnham Royal Ward was 5,218 with males making up 47.6% of the population and females making up 52.4%. The age breakdown of the Ward's population is shown in the table below.

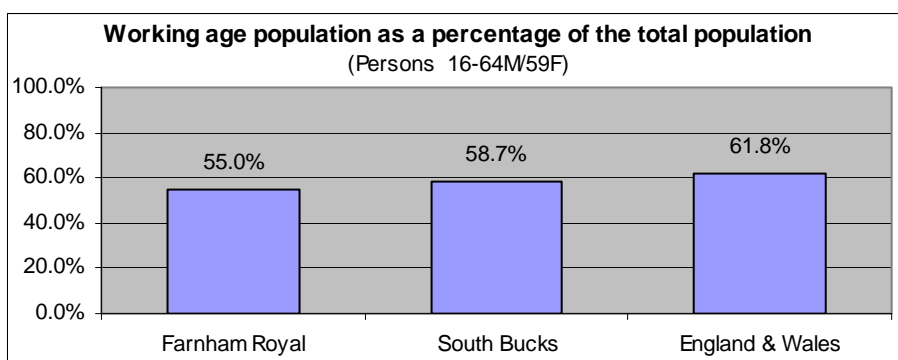
|                 | Total  | 0-4  | 5-14  | 15-19 | 20-44 | 45-64 | 65+   |
|-----------------|--------|------|-------|-------|-------|-------|-------|
| Farnham Royal   | 5,218  | 5.5% | 14.3% | 5.4%  | 26.6% | 28.2% | 20.0% |
| South Bucks     | 66,600 | 5.7% | 12.5% | 5.7%  | 29.7% | 27.9% | 18.3% |
| England & Wales | -      | 6.1% | 11.3% | 6.4%  | 34.5% | 25.3% | 16.4% |

- There were 1,314 people within the 0-19 age group living within the Ward which contributes 25.2% to the population of Farnham Royal; this is higher than the average of 23.9% for South Bucks.
- The 65 and over age group make up 20.0% of the Ward this is slightly higher than the average of 18.3% for South Bucks and 3.6% higher than the England & Wales average.
- There was a 5.2% increase in population in the ward from 2005-2009 based on mid year estimates, slightly higher than the increase for South Bucks of 4.7%.

### Working Age Population

Source: Office of National Statistics—2010 Ward Population Estimates, mid-2009 (experimental statistics) - working age

Based on mid-2009 figures the working age population makes up 55% of the population of Farnham Royal, this is 3.7% lower than the average for South Bucks and 6.8% lower than the average for England & Wales.



### Population Projections

Source: 2008-based sub national population projections, Office for National Statistics/Bucks Strategic Partnership (BSP) population projections October 2010

National population projections are not available at ward level but based on the latest national population projections South Bucks District is predicted to have a population increase of 25.9% over the next 25 years from 65,700 to 82,700 in 2033. The projections are trend based which means assumptions for future levels of births, deaths and migration are based on observed levels (they do not take into account any future policy changes that have not yet occurred). Within these figures based on projections for the district from 2008 to 2033:

- the 0-19 age group is predicted to rise by 20.1% (England 10.4%);
- the 20-64 age group by 15.5% (England 8.3%); and
- the 65+ age group by 63.9% (England 65.3%).

Local population projections at district and ward level (commissioned by Bucks CC) have been produced which take account of additional datasets including housing provision in the area and other local inputs. These put the population at 67,550 in 2026 (a difference of over 11,000 from the national projections for 2026). The projections cover a different time period and the age group breakdown is different. The significant variances between the projections means caution needs to be applied when using these figures as a realistic figure is more likely to fall somewhere between the two predictions (further information about both sets of projections can be found on KnowledgeSource).

Based on the BSP projections for Farnham Royal the estimated population is forecasted to rise from 4,950 in 2009 to 5,300 in 2026 an increase of 7.1%. Looking at a split down by age group based on projections for the ward from 2009 to 2026:

- the 0-17 age group is predicted to stay at 1,150 (no change)
- 18—retired\* age group is predicted to decrease from 2,550 to 2,500 (-2%)
- retired\* + age group is predicted to rise from 1,200 to 1,700 (41.7%)

(\*retired is 60 for females and 65 for males)

## Population Density

Source: Table UV02, ONS, Census 2001

The number of persons per hectare in Farnham Royal based on the 2001 Census information was 12.44, this is higher than the average of 4.38 for South Bucks and 3.45 for England and Wales.

## Ethnicity

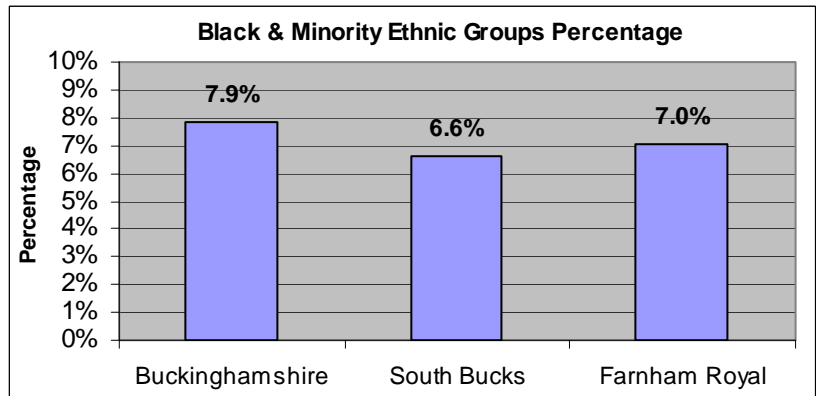
Source: Table KS06 & UV08, Census 2001/ Nomisweb standard tables, ONS.

Resident Population Estimates by Ethnic Group (experimental), 2009, Office for National Statistics.

Based on 2001 Census information 86.4% of the population of Farnham Royal Ward stated their ethnicity as White British; this is similar to the 86.5% average for South Bucks. 5.0 of the population of the Ward declare their ethnicity as Other-White, similar to the 5.1% average for South Bucks.

There are 7.0% of the population who are from Black & Minority Ethnic (BME) Groups this is slightly higher than the 6.6% average for South Bucks. This is split down into the following BME Groups.

| BME mix                       | Percentage |
|-------------------------------|------------|
| Mixed                         | 1.3%       |
| Asian or Asian British        | 4.1%       |
| Black or Black British        | 0.4%       |
| Chinese or other ethnic group | 1.3%       |



The BME groups tend to be higher in the younger age group as the split below shows:

- For the 0-19 age group 10.7% of the population are from BME Groups (10.2% South Bucks average)
- For the 20-64 age group 6.3% of the population are from BME groups (6.7% South Bucks average)
- For the 65 and over age group 2.4% of the population are from BME groups (1.5% South Bucks average)

Looking at the change from the 1991 to 2001 Census for South Bucks District, 3.3% identified with one of the non-white ethnic categories in 1991 compared to 6.6% in 2001, an increase of 3.3%. Based on experimental population estimates for 2009 13.1% of the population in South Bucks were from a non-white ethnic group.

12.3% of the population of Farnham Royal were born outside of the UK which similar to the District average of 12.2%. The Ward population born outside the UK are predominantly from Asia (3.3%), other Western European countries (2.6%), Africa (2.0%) and North America (1.8%).

## Religion

Source: Table KS07, ONS, Census 2001

Based on 2001 Census information 75.7% of the population of Farnham Royal Ward stated their religion as Christianity; this is similar to the average for South Bucks.

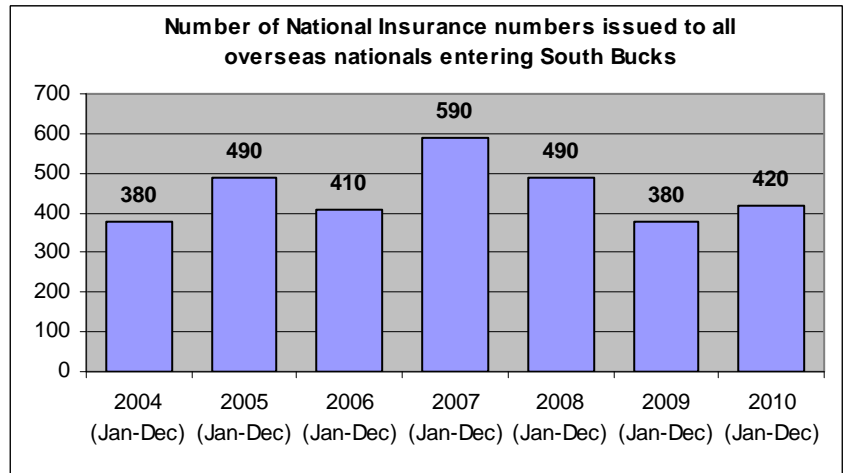
| People stating religion as: | Farnham Royal | South Bucks | England and Wales |
|-----------------------------|---------------|-------------|-------------------|
| Christian                   | 75.7%         | 75.6%       | 71.8%             |
| Buddhist                    | 0.3%          | 0.3%        | 0.3%              |
| Hindu                       | 1.3%          | 1.2%        | 1.1%              |
| Jewish                      | 0.5%          | 0.5%        | 0.5%              |
| Muslim                      | 1.1%          | 1.1%        | 3.0%              |
| Sikh                        | 1.4%          | 1.6%        | 0.6%              |
| Other religions             | 0.2%          | 0.3%        | 0.3%              |
| No religion                 | 12.7%         | 12.5%       | 14.8%             |
| Religion not stated         | 6.8%          | 6.9%        | 7.7%              |

## Migrant Workers

Source: DWP 2010, Local Area Migration Indicators table from Office of National Statistics

Overseas nationals obtain a National Insurance (NI) Number before they enter into employment or upon starting work, so registrations data can be a good indication of new arrivals who are economically active. (Some foreign nationals do obtain a NI number but do not take up employment e.g. refugees will need an NI number but will not all be economically active.)

These figures are only available at district level and do not go down to ward level.



The top 6 nationalities for overseas nationals who are issued a National Insurance number entering South Bucks in 2010 were Poland, India, Australia, Germany, Italy and Spain.

## Environment

### Land Use Statistics

Source: Generalised Land Use Database Statistics 2005, Communities and Local Government (last updated Jan-07)

The following data is taken from experimental statistics from January 2005 from the generalised land use database. The total area of all land types for Farnham Royal is 400 hectares which makes up 2.8% of the land in the District. The main type of land use is greenspace and makes up 49.4% of the land use for the Ward. Communities and Local Government consider the 2005 figures to be the definitive land use statistics. No further work is planned on the Generalised Land Use Database.

| Type of land use               | Hectares | % of ward area that land use type makes up | % of district that land use type makes up |
|--------------------------------|----------|--|---|
| Area of Domestic Buildings     | 20.4     | 5.1%                                       | 1.7%                                      |
| Area of Non Domestic Buildings | 3.4      | 0.8%                                       | 0.8%                                      |
| Area of Road                   | 29.0     | 7.3%                                       | 4.2%                                      |
| Area of Path                   | 0.8      | 0.2%                                       | 0.2%                                      |
| Area of Rail                   | 0.0      | 0.0%                                       | 0.2%                                      |
| Area of Domestic Gardens       | 137.9    | 34.5%                                      | 11.2%                                     |
| Area of Greenspace             | 197.3    | 49.4%                                      | 77.5%                                     |
| Area of Water                  | 0.1      | 0.0%                                       | 2.0%                                      |
| Area of Other Land Uses        | 10.8     | 2.7%                                       | 2.2%                                      |
| Area of Unclassified Land      | 0        | 0.0%                                       | 0.0%                                      |

Based on figures from the Council's 2009/10 Annual Monitoring Report for Farnham Royal Parish there were:

- 21.6 hectares of land designated as Area of Attractive Landscape (designation by Bucks CC)
- 0 conservation areas within Farnham Royal Parish and 15 listed buildings

## Housing

### Household Tenure

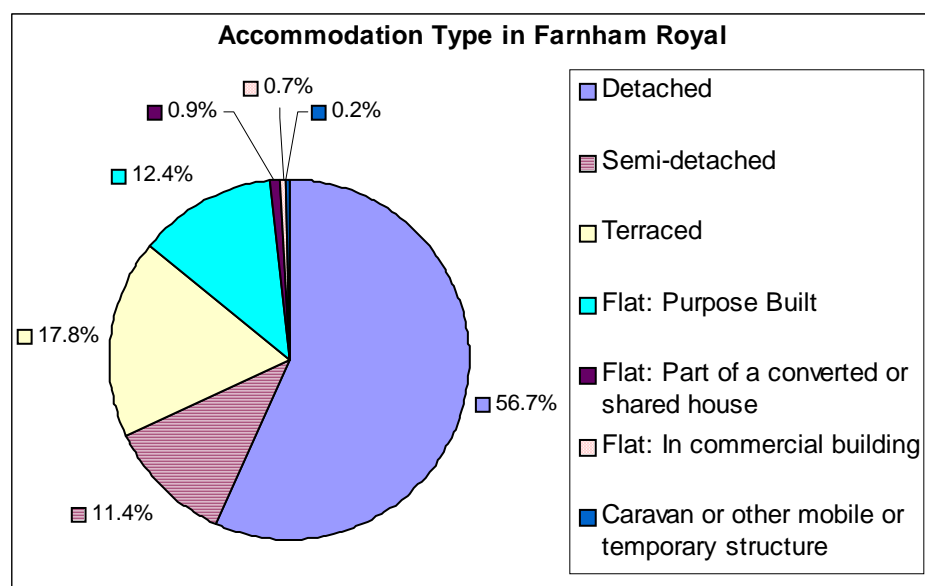
Source: Table KS18, ONS, Census 2001

Within Farnham Royal household tenure is similar to the District average, almost 81% of households are owner occupied which is 12% higher than the England & Wales average. 40% of owner occupied housing is owned outright which is slightly higher than the District average.

| Household Tenure  | Farnham Royal | South Bucks | England & Wales |
|---|---------------|-------------|-----------------|
| Owner Occupied  | 80.9%         | 78.0%       | 68.9%           |
| Social Rented: Council/<br>Housing Association/<br>Registered Social Landlord | 11.3%         | 12.6%       | 19.2%           |
| Private Rented: Private<br>landlord or letting agency                         | 4.9%          | 6.1%        | 8.7%            |
| Other   | 2.9%          | 3.3%        | 3.2%            |

### Accommodation Type

Source: Table KS16, ONS, Census 2001



Based on the 2001 Census there were 1981 households in Farnham Royal, 97.5% of these were lived in and 2.5% were either vacant or used as a second residence or holiday accommodation.

56.7% of the accommodation type in the Ward was detached housing which is almost 14% higher than the District average. Terraced housing makes up 17.8% of the accommodation type which is 4.2% higher than the District average.

### Household Composition

Source: Table KS20, ONS, Census 2001

The table below shows the household composition in 2001 for Farnham Royal compared to the average for the District. The main difference to the District average is there is a higher percentage of married couple households (2.4% higher) and a lower percentage of single non-pensionable households (2.8% lower).

⇒ There were 62 lone parent households with dependent children.

| Household Composition                              | Farnham Royal (Number) | Farnham Royal (%) | South Bucks District average (%) | Difference |
|--|------------------------|-------------------|----------------------------------|------------|
| Single non-pensionable households                  | 173                    | 9.0%              | 11.7%                            | -2.8%      |
| Single pensioner                                   | 289                    | 15.0%             | 14.3%                            | 0.7%       |
| All other pensioner households                     | 251                    | 13.0%             | 11.9%                            | 1.1%       |
| Married couple households: No children             | 309                    | 16.0%             | 14.9%                            | 1.1%       |
| Married couple households: With children           | 578                    | 29.9%             | 28.6%                            | 1.3%       |
| Cohabiting couple households: No children          | 70                     | 3.6%              | 4.1%                             | -0.5%      |
| Cohabiting couple households: With children        | 50                     | 2.6%              | 2.6%                             | -0.1%      |
| Lone parent households: With dependent children    | 62                     | 3.2%              | 3.3%                             | -0.1%      |
| Lone parent households: All children non-dependent | 44                     | 2.3%              | 2.8%                             | -0.6%      |
| Student households                                 | 0                      | 0.0%              | 0.0%                             | 0.0%       |
| Other households: With dependent children          | 44                     | 2.3%              | 2.3%                             | 0.0%       |
| Other households: Other                            | 62                     | 3.2%              | 3.3%                             | -0.1%      |

## Council Tax Banding

Source: Valuation list for the authority on 4th Oct 2010

Council tax information can provide an overview of house value within an area, however whilst they provide an overview it should be noted that these bandings were created several years ago. This information is only available at a parish level rather than by ward. The percentage of houses falling in the G-H bands (the higher council tax bands) for Farnham Royal is 16% higher than the District average.

| Parish               | Dwelling Count | Bands A-C | Bands D-F | Bands G-H |
|----------------------|----------------|-----------|-----------|-----------|
| Farnham Royal        | 2,421          | 12.5%     | 39.9%     | 47.6%     |
| South Bucks District | 27,628         | 17.6%     | 50.8%     | 31.6%     |

## House prices

Source: DCLG tables from Land Registry data—2010

The average house price in 2010 in South Bucks based on house sales was £536k over 47% higher than the average for Buckinghamshire. The average for Chiltern was £457,202, Wycombe was £338,294 and Aylesbury Vale was £273,022.

## Acorn Data

Source: Acorn Data 2010, produced by CACI.

Acorn Data provides useful data about the characteristics of people based on the postcode in which they live. Using data from a range of sources, every postcode is classified into one of 5 categories, which split down into further groups. This data provides useful information to start to understand the feelings, behaviours and expectations of each group. N.B All category names are already defined on the database.

| Area          | Wealthy Achievers | Urban Prosperity | Comfortably Off | Moderate Means | Hard Pressed | No Classification |
|---------------|-------------------|------------------|-----------------|----------------|--------------|-------------------|
| Farnham Royal | 74.3%             | 9.1%             | 11.4%           | 2.9%           | 1.1%         | 1.1%              |
| South Bucks   | 60.3%             | 10.9%            | 21.6%           | 2.1%           | 3.8%         | 1.3%              |

Looking at the five main categories it shows that Farnham Royal has a higher percentage of 'Wealthy Achiever' households than the District average by 14.3%. The tables below provide a detailed split down into smaller groupings which provide an idea of the type of households within each category.

| Category 1 - Wealthy Achievers  | Ward % | District % |
|---------------------------------|--------|------------|
| Wealthy Mature Professionals    | 38.9%  | 24.2%      |
| Villages with Wealthy Commuters | 24.6%  | 14.4%      |
| Well Off Managers               | 4.0%   | 4.8%       |
| Affluent Greys                  | 2.9%   | 6.7%       |
| Flourishing Families            | 4.0%   | 10.3%      |

| Category 2 - Urban Prosperity | Ward % | District % |
|-------------------------------|--------|------------|
| Urban Professionals           | 9.1%   | 10.9%      |

| Category 3 - Comfortably Off         | Ward % | District % |
|--------------------------------------|--------|------------|
| Secure Families                      | 4.6%   | 13.3%      |
| Settled Suburbia//Prudent Pensioners | 6.9%   | 8.4%       |

| Category 4 - Moderate Means | Ward % | District % |
|-----------------------------|--------|------------|
| Moderate Means              | 2.9%   | 2.1%       |

| Category 5 - Urban Prosperity | Ward % | District % |
|-------------------------------|--------|------------|
| Hard Pressed                  | 1.1%   | 3.8%       |

| Unclassified | Ward % | District % |
|--------------|--------|------------|
| Unclassified | 1.1%   | 1.3%       |

The main type of grouping within this Ward are 'Wealthy Mature Professionals'. The suggested characteristics of this group are that their household income of is extremely high. Their affluence and middle aged family profile may be linked to the importance they place on further education and secondary school education, where there is a strong engagement to attain qualifications. Public and private transport is important, with higher rates of car ownership and commuting by train/tube, but people are also more likely to work from home. People are less satisfied with transport.

## Employment & Education

### Economically active

Source: CAS028, ONS, Census 2001

Based on information from the 2001 Census 76.6% of the working age population within the Ward are economically active, this is slightly lower than the average of 77.9% for the District. The female and male breakdown shows that 66.8% of the female working age population are economically active within Farnham Royal which is slightly lower than the District average.

|  | Farnham Royal | South Bucks | Great Britain |
|--|---------------|-------------|---------------|
| <b>Economically active (% of working age population)</b> |               |             |               |
| All People   | 76.6%         | 77.9%       | 74.0%         |
| Males  | 87.5%         | 87.7%       | 81.4%         |
| Females  | 66.8%         | 68.6%       | 66.8%         |
| <b>Unemployed (% of economically active)</b>             |               |             |               |
| All People   | 2.5%          | 3.0%        | 5.7%          |

2.5% of the economically active population are unemployed in Farnham Royal which is 0.5% lower than the District average.

Based on latest estimates the economically active rate for South Bucks is 76.5% and the rate for Great Britain is 76.2% (source: Annual Population Survey Jan - Dec 2010).

### Hours worked

Source: CAS029, ONS, Census 2001

The table opposite shows that 76.5% of the people in employment within the Ward work full-time hours and 23.5% work part-time hours. Looking at the split down by sex, 92.4% of males worked full time and 7.6% worked part time and 57.5% of females worked full time and 42.5% worked part time.

|  | Farnham Royal | South Bucks | Great Britain |
|--|---------------|-------------|---------------|
| <b>Hours worked - for all people in employment</b> |               |             |               |
| Full time  | 76.5%         | 77.4%       | 75.9%         |
| Part time  | 23.5%         | 22.6%       | 24.1%         |

### Employment by Occupation

Source: CAS033, ONS, Census 2001

For the population of Farnham Royal the top 3 occupation groups are:

- Managers and Senior Officials who make up 29.2% (South Bucks Average 25.8%)
- Associate Professional and Technical who make up 15.8% (South Bucks Average 15.4%)
- Professional who make up 15.7% (South Bucks Average 13.4%)

These 3 occupation groups contribute almost 61% of occupations for the Ward.

### Jobseeker's Allowance (JSA) Claimants

Source: ONS claimant count with rates and proportions, Nomisweb (June 2011)

Within Farnham Royal Ward there were 37 people claiming Job Seekers Allowance based on a quarterly snapshot from June 2011. This accounts for 1.2% of the working age population which is slightly lower than the South Bucks average of 1.3% and Great Britain average of 3.7%.

### Education

Source: CAS032, ONS, Census 2001

Within Farnham Royal 33.9% of people aged 16 to 74 have higher level qualifications which is 5.3% higher than the average for South Bucks. 22.5% have no qualifications which is 4.2% lower than the South Bucks average and 13.3% lower than the Great Britain average.

|   | Farnham Royal (numbers) | Farnham Royal % | South Bucks % | Great Britain % |
|---|-------------------------|-----------------|---------------|-----------------|
| No qualifications or level unknown <sup>1</sup> | 783                     | 22.5%           | 26.7%         | 35.8%           |
| Lower level qualifications <sup>2</sup>         | 1517                    | 43.6%           | 44.6%         | 43.9%           |
| Higher level qualifications <sup>3</sup>        | 1179                    | 33.9%           | 28.6%         | 20.4%           |

<sup>1</sup> People without any academic, vocational or professional qualification or level unknown

<sup>2</sup> Qualifications equivalent to Level 1 to 3 of the National Key Learning Targets (i.e. GCSE's, O-Levels, A-Levels, NVQ Level 1-3)

<sup>3</sup> Qualifications of Level 4 & above (i.e. first/higher degrees, NVQ Level 4 & 5, HND, HNC & other professional qualifications)

## Travel

### Distance Travelled to Work

Source: Table UV35, ONS, Census 2001

The table below shows the distance travelled to work for all people aged 16 to 74 who were in employment based on information collected in the 2001 Census.

|                              | Farnham Royal | South Bucks | South East | England & Wales |
|------------------------------|---------------|-------------|------------|-----------------|
| Works mainly at or from home | 15.9%         | 13.1%       | 9.9%       | 9.2%            |
| Less than 2km                | 9.8%          | 12.2%       | 20.4%      | 20.0%           |
| 2km to less than 5km         | 16.1%         | 15.3%       | 17.6%      | 20.0%           |
| 5km to less than 10km        | 19.4%         | 19.5%       | 15.2%      | 18.2%           |
| 10km to less than 20km       | 15.7%         | 16.4%       | 13.7%      | 15.2%           |
| 20km to less than 40km       | 15.4%         | 14.9%       | 10.3%      | 7.7%            |
| 40km and over                | 3.1%          | 3.3%        | 7.5%       | 4.9%            |
| No fixed place of work       | 4.0%          | 4.9%        | 5.1%       | 4.4%            |
| Other                        | 0.6%          | 0.4%        | 0.3%       | 0.3%            |

Within Farnham Royal 15.9% work mainly at or from home which is 2.8% higher than the average for the District. 9.8% travel less than 2km to work which is lower than the average for the District.

### Method of Travel to Work

Source: Table UV39, ONS, Census 2001

The table below shows the method of travel to work for the usual resident population aged 16 to 74 who were in work based on information collected in the 2001 Census.

|  | Farnham Royal | South Bucks | South East | England & Wales |
|--|---------------|-------------|------------|-----------------|
| Driving a car or van                   | 65.9%         | 65.0%       | 59.2%      | 55.2%           |
| On foot                                | 5.0%          | 5.9%        | 9.9%       | 10.0%           |
| Works mainly at or from home           | 15.9%         | 13.1%       | 9.9%       | 9.2%            |
| Bus, minibus or coach                  | 1.1%          | 1.5%        | 4.4%       | 7.4%            |
| Passenger in a car or van              | 3.9%          | 4.3%        | 5.7%       | 6.3%            |
| Train                                  | 4.4%          | 5.8%        | 5.6%       | 4.1%            |
| Underground, metro, light rail or tram | 0.6%          | 1.3%        | 0.2%       | 3.0%            |
| Bicycle                                | 1.6%          | 1.5%        | 3.1%       | 2.8%            |
| Motorcycle, scooter or moped           | 0.8%          | 0.8%        | 1.1%       | 1.1%            |
| Other                                  | 0.8%          | 0.8%        | 0.9%       | 1.0%            |

Within Farnham Royal Ward there is a higher percentage of people working mainly from home than the District average. 5% of people travel by train or underground to work which is 2.1% lower than the District average.

### Car and Van Ownership

Source: Table UV62, ONS, Census 2001

The table below shows that in 2001 that 8.5% of households in Farnham Royal had no car or van which is lower than the District average and 18.3% lower than the England & Wales average. 58.9% of households had 2 or more cars or vans which was 6% higher than the District average.

|                        | Farnham Royal | South Bucks | South East | England & Wales |
|------------------------|---------------|-------------|------------|-----------------|
| No car or van          | 8.5%          | 11.1%       | 19.4%      | 26.8%           |
| 1 car or van           | 32.6%         | 36.0%       | 42.6%      | 43.8%           |
| 2 cars or vans         | 43.3%         | 38.9%       | 29.6%      | 23.5%           |
| 3 or more cars or vans | 15.6%         | 14.0%       | 8.4%       | 5.9%            |

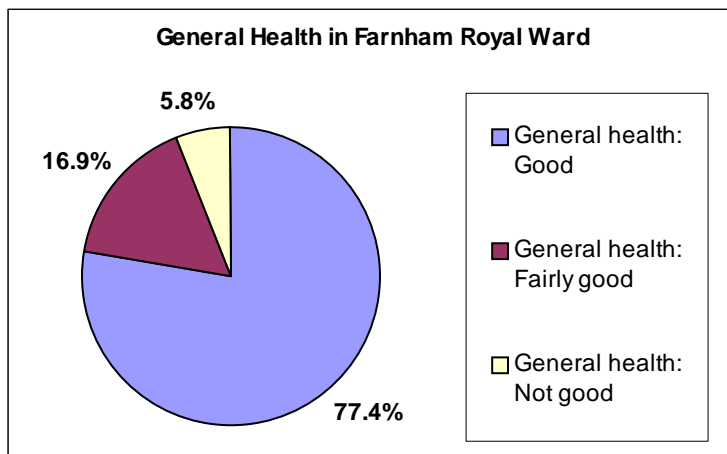
## Health

### General Health & Limiting Long-term Illness

Source: Table KS08, ONS, Census 2001

77.4% of people within Farnham Royal declare themselves as having good health, this is 2.1% higher than the average for South Bucks. The Ward percentage is 8.8% higher than the England and Wales average of 68.6% who declared they had good health.

People declaring themselves as having not good general health in the Ward is lower than the average for the District and England and Wales.



In 2001 there was an estimated 11.9% of the population of Farnham Royal who had a limiting long-term illness which equates to 596 people, this percentage is lower than the average for South Bucks of 13.1% and lower than the average for England and Wales which is 18.2%.

### Provision of Unpaid Care

Source: Table KS08, ONS, Census 2001

Within Farnham Royal Ward 10.1% of the population provide some form of unpaid care, this equates to 507 people. The split down of this is as follows:

- 81.7% (414 people) were providing 1-19 hours unpaid care a week
- 5.1% (26 people) were providing 20-49 hours unpaid care a week
- 13.2% (67 people) were providing 50 or more hours unpaid care a week

### Disability Living Allowance Claimants

Source: Department of Work and Pensions, August 2010

Disability Living Allowance is payable to people who are disabled and who have personal care needs, mobility needs or both. It consists of two components, the care component for people who need help with personal care and the mobility component for people who need help with getting around.

Within Farnham Royal Ward there were 105 people claiming Disability Living Allowance based on figures from August 2010 which accounted for about 6.3% of the total claimants for South Bucks. The age breakdown of claimants is shown in the table opposite. 50 of the claimants were male and 55 were female.

| Claimants Age              | Count of Claimants |
|----------------------------|--------------------|
| Claimants Aged Under 16    | 10                 |
| Claimants Aged 16-24       | 10                 |
| Claimants Aged 25-49       | 30                 |
| Claimants Aged 50-59       | 15                 |
| Claimants Aged 60-69       | 25                 |
| Claimants Aged 70 and Over | 15                 |

Of the people claiming disability living allowance:

- 5 had a claim duration for less than 12 months,
- 0 had a claim duration for between 1 & 2 years,
- 15 had a claim duration which was between 2 & 5 years
- 85 had a claim duration which was 5 years and over

Incapacity Benefit/Severe Disablement Allowance is a benefit provided to people due to them being incapable of work through illness or disability. This includes Sickness/Invalidity Benefit and Severe Disablement and Incapacity Benefit. Within the Farnham Royal Ward there were 45 people claiming this type of benefit, 40 of which were Incapacity Benefit Claimants and 5 of which were severe Disablement Allowance Claimants.

*Data has been rounded to base 5 for all figures in order to protect small counts.*

## Deprivation

Source: *Indices of Multiple Deprivation 2010, CLG.*

The Indices of Multiple Deprivation 2010 (IMD 2010) is a measure of deprivation at the small area level—Lower Super Output Area (LSOA). England is split into 32,482 LSOAs, LSOAs have a minimum population of 1000, and overall average population of 1500, and were ranked to create the IMD. All of the LSOAs in England are ranked, the LSOA ranked 1 by the IMD 2010 is the most deprived and the LSOA ranked 32,482 is the least deprived.

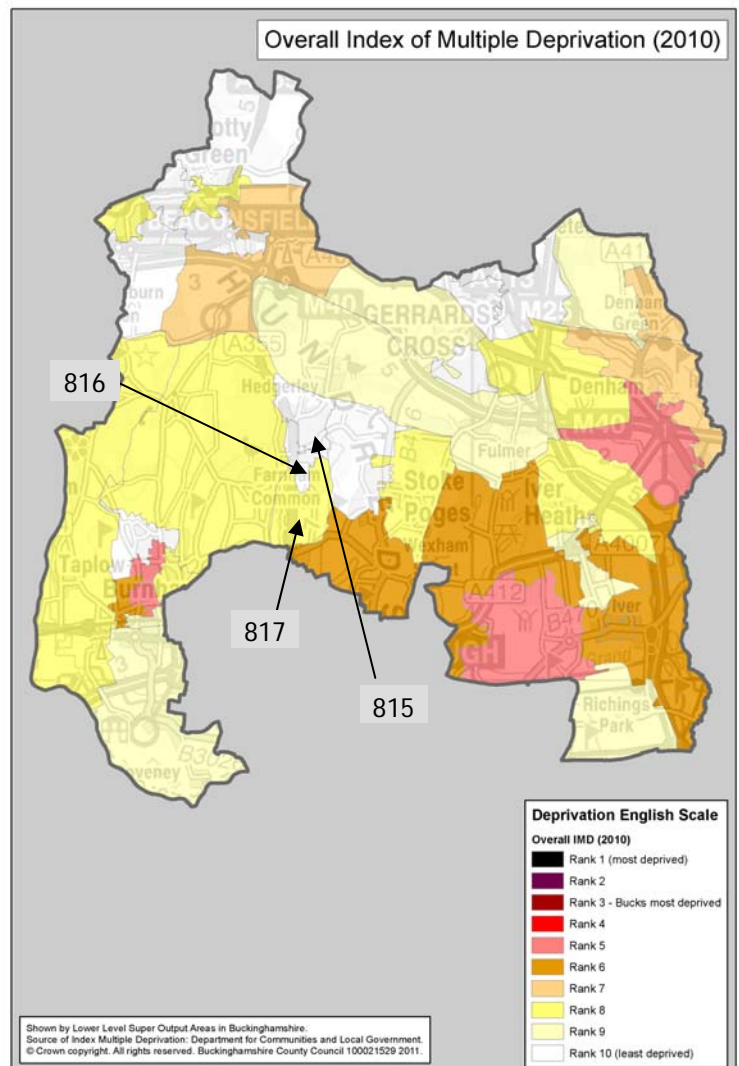
- Farnham Royal is made up of 3 LSOAs (815, 816 & 817 –locations shown on the map).

The IMD model is based on 7 distinct dimensions of deprivation which are then given a weighting to work out an overall ranking for deprivation as the table below shows.

| Domain                                   | Weighting |
|--|-----------|
| Income Deprivation                       | 22.5%     |
| Employment Deprivation                   | 22.5%     |
| Health Deprivation & Disability          | 13.5%     |
| Education, Skills & Training Deprivation | 13.5%     |
| Barriers to Housing and Services         | 9.3%      |
| Crime & Disorder                         | 9.3%      |
| Living Environment Deprivation           | 9.3%      |

### The different domains

- Income Deprivation covers a range of indicators including adults and children in Income Support/ Income-Based JSA/ Pension Credit/ certain child tax credit families and Asylum seekers receiving subsistence/accommodation support.
- Employment Deprivation measures involuntary exclusion of working age population from the labour market. This includes indicators on recipients of Jobseekers Allowance, Incapacity Benefits, Severe Disablement Allowance, claimants of employment and support allowance, participants in the New Deal for under 25s, over 25s and new parents.
- Health Deprivation and Disability domain measures rates of poor health, early mortality and disability in an area and covers the entire age range, it includes indicators on years of potential life lost, comparative illness and disability ratio, proportion of adults under 60 suffering from mood or anxiety disorders and measures of acute morbidity.
- Education Skills and Training Deprivation covers two sub-domains: one relating to education deprivation for children/young people in the area, and one relating to lack of skills and qualifications among a sub-set of the working age population.
- Barriers to Housing and Services domain splits into two sub-domains: geographical barriers which looks at road distance to a GP surgery/general stores or supermarket/primary school and to a Post office; wider barriers includes issues relating to access to housing such as affordability and household overcrowding.
- Crime domain measures the rate of recorded crime for four major crime types, representing the risk of personal and material victimisation at a small area level. These include Burglary, Theft, Criminal Damage and Violence.
- Living environment deprivation comprises two sub-domains: the 'indoors' which measures the quality of housing (housing in poor condition and without central heating), and the 'outdoors' which contains two measures about air quality and road traffic accidents.



For the overall level of deprivation within Farnham Royal LSOA 815 falls within the least deprived 3% in England, LSOA 816 falls within the least deprived 10% in England and LSOA 817 falls within the least 26% in England.

For each LSOA within Farnham Royal the table below shows the rank out all the LSOAs in England, the deprivation percentage and the rank compared to the other LSOAs in the District for each domain.

| Domain                                   | LSOA | Rank out of 32,482 LSOAs in England<br>1 most deprived / 32,482 least deprived | Deprivation %<br>0 = most deprived<br>100 = least deprived | Rank out of LSOAs in District<br>1 = lowest rank<br>40= highest rank |
|--|------|--|--|--|
| Overall Deprivation                      | 815  | 31,568   | 97.19%   | 37/40  |
|  | 816  | 29,543   | 90.95%   | 30/40  |
|  | 817  | 24,236   | 74.61%   | 19/40  |
| Income Deprivation                       | 815  | 30,530   | 93.99%   | 31/40  |
|  | 816  | 26,985   | 83.08%   | 22/40  |
|  | 817  | 21,316   | 65.62%   | 14/40  |
| Employment Deprivation                   | 815  | 32,024   | 98.59%   | 36/40  |
|  | 816  | 30,081   | 92.61%   | 23/40  |
|  | 817  | 28,049   | 86.35%   | 16/40  |
| Health Deprivation & Disability          | 815  | 32,177   | 99.06%   | 31/40  |
|  | 816  | 31,947   | 98.35%   | 26/40  |
|  | 817  | 29,801   | 91.75%   | 16/40  |
| Education, Skills & Training Deprivation | 815  | 32,052   | 98.68%   | 34/40  |
|  | 816  | 27,957   | 86.07%   | 24/40  |
|  | 817  | 26,071   | 80.26%   | 19/40  |
| Barriers to Housing & Services           | 815  | 19,353   | 59.58%   | 26/40  |
|  | 816  | 28,737   | 88.47%   | 40/40  |
|  | 817  | 14,922   | 45.94%   | 17/40  |
| Crime & Disorder                         | 815  | 15,110   | 46.52%   | 32/40  |
|  | 816  | 8,887  | 27.36%   | 23/40  |
|  | 817  | 4,673  | 14.39%   | 9/40   |
| Living Environment Deprivation           | 815  | 29,428   | 90.60%   | 36/40  |
|  | 816  | 23,445   | 72.18%   | 25/40  |
|  | 817  | 27,011   | 83.16%   | 30/40  |

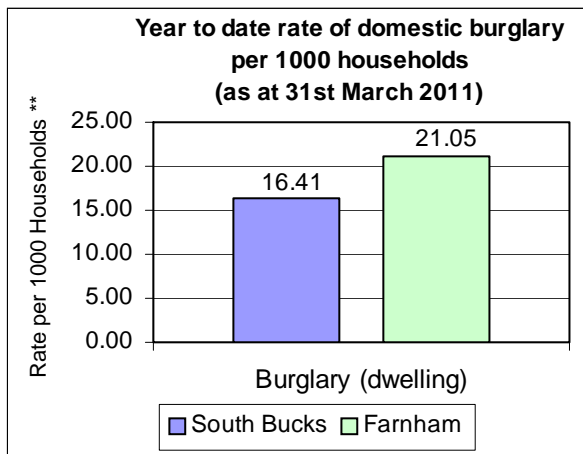
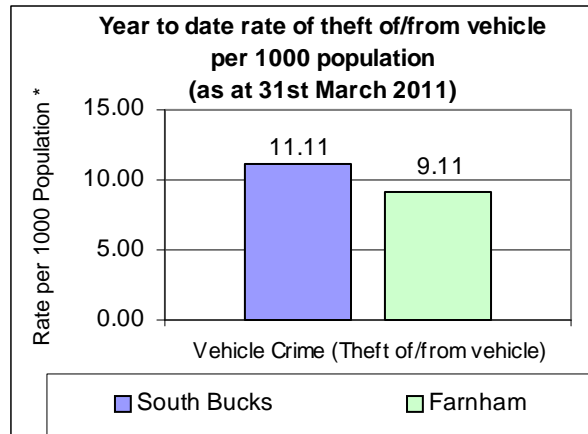
- For Income Deprivation there is clearly a difference between the LSOAs in Farnham Royal with one of the LSOAs (815) falling in the least deprived 7% in England for Income Deprivation, LSOA 816 falls in the least deprived 17% in England and LSOA 817 falls in the least deprived 35% in England. Based on the scoring used to work out this ranking we can say that 8% of people are income deprived in LSOA 817.
- For Employment Deprivation LSOA 815 is in the least deprived 2% in England, LSOA 816 is in the least deprived 8% and LSOA 817 is in the least deprived 14% in England.
- For Health Deprivation & Disability all LSOAs fall within the least deprived 9% in England.
- There are differences across the LSOAs when looking at the Barriers to Housing & Services domain. LSOA 817 is the most deprived for this domain and falls in the lower half of all LSOAs in England in the most deprived 46% in England although it only ranks 17 out of 40 compared to the other areas in South Bucks.
- For Crime and Disorder two of the LSOAs (816 & 817) fall in the most deprived 28% in England with SOA 815 falling within the lower half of all LSOAs in England.
- For the Living Environment Deprivation all LSOAs in Farnham Royal fall in the least deprived 28% in England.

## Crime

Source: Thames Valley Police Crime Summary for South Bucks District as at 31st March 2011

Information on crime levels is produced at the Police Neighbourhood level rather than by Ward. The information is based on year to date crime summaries produced by Thames Valley Police for the District.

The graph opposite shows that for the Farnham Royal police neighbourhood area the rate of theft of or from a vehicle per 1,000 population is lower than the average for the District. Based on the previous years reporting, vehicle crime increased slightly by 3.8% for Beaconsfield police neighbourhood area from 50 incidents in 2009/10 to 52 incidents in 2010/11 (however this is significantly down from 2008/09 figures).



The rate of domestic burglary per 1,000 households for Farnham police neighbourhood area is higher than the District average. The number of domestic burglaries for the Farnham Royal police neighbourhood area has increased slightly from 36 in 2009/10 to 48 in 2010/11.

\* Population figures to work out the rates per 1000 population are based on the Civil Parish population estimates in South Bucks, mid-2009.

\*\* Household figures to work out the rates per 1000 households are based on the 2001 census data for Parishes and includes new housing completions per parish from 2001-2011. Data inaccuracy may occur due to boundary variations.

The table below shows the number of offences over the last three years for the Beaconsfield police neighbourhood area and the District:

| Number of offences                   | Farnham Royal |           |          |           |          | South Bucks |           |          |           |          |
|--------------------------------------|---------------|-----------|----------|-----------|----------|-------------|-----------|----------|-----------|----------|
|                                      | 2008/2009     | 2009/2010 | % change | 2010/2011 | % change | 2008/2009   | 2009/2010 | % change | 2010/2011 | % change |
| Vehicle Crime Theft of/from vehicle) | 89            | 50        | -43.8%   | 52        | 3.8%     | 1125        | 1003      | -10.8%   | 740       | -26.2%   |
| Burglary (Dwelling)                  | 59            | 36        | -39.0%   | 48        | 33.3%    | 601         | 511       | -15.0%   | 432       | -15.5%   |
| All Crime                            | 466           | 368       | -21.0%   | 335       | -9.0%    | 6323        | 5809      | -8.1%    | 4843      | -16.6%   |

Crime statistics for the District are produced by Thames Valley Police on a monthly basis and should be used for up to date trend information. There are some differences between the neighbourhood police area figures and the overall South Bucks figures due to different timelines in producing the report and crimes that are reclassified over the reporting period.

When using this Ward Profile please note that information is taken from a variety of sources and SBDC can not vouch for its accuracy & reliability. Many statistics come from the 2001 Census so this should be taken into account when utilising these figures as these are now 10 years old.

Some of the data contained in this profile is protected by various copyrights and cannot be re-used elsewhere without permission of the relevant copyright holder (please refer to source data for more information).