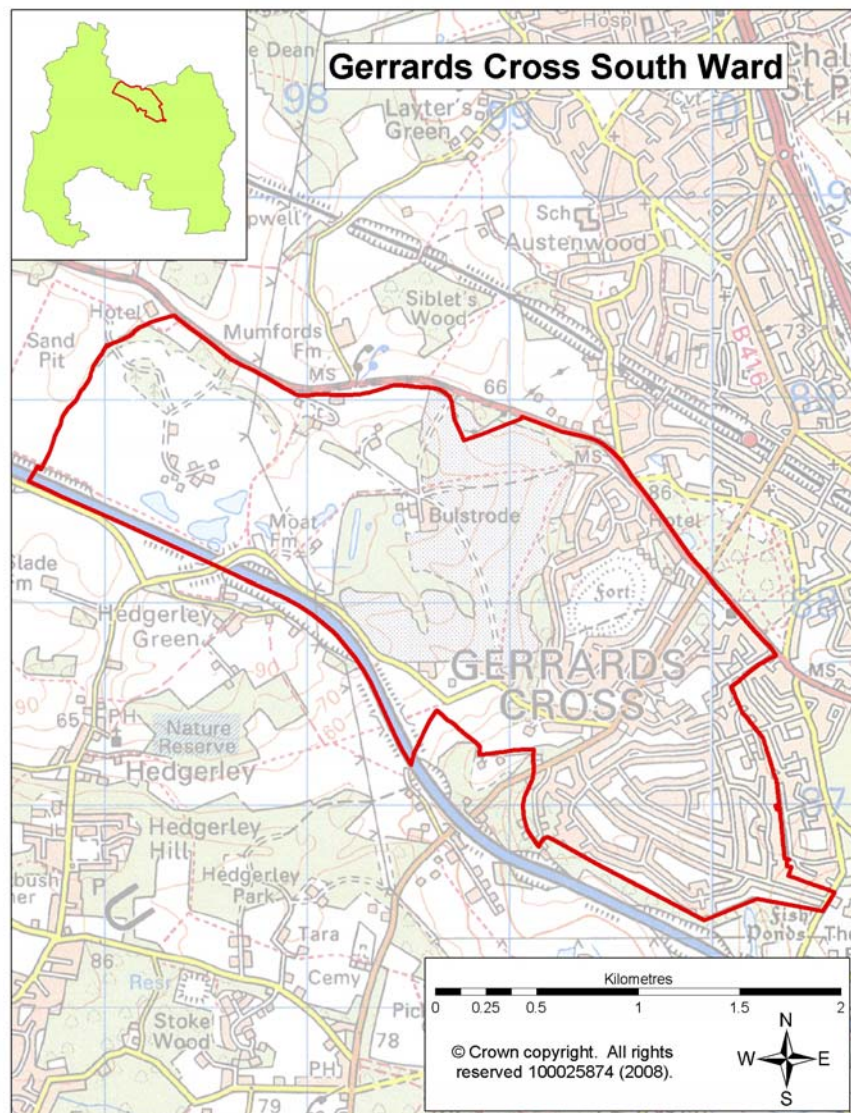


This ward profile aims to provide an overview of information about the Gerrards Cross South Ward. The majority of this information is at ward level for Gerrards Cross South, except for a small number of statistics which are only available at parish or district level.



Summary of key points:

- there were 965 people within the 0-19 age group living within the Ward which contributes 27.3% to the population of Gerrards Cross South; this is 3.4% higher than the average of 23.9% for South Bucks;
- there are 14.5% of the population who are from Black & Minority Ethnic (BME) Groups this is higher than the 6.6% average for South Bucks and 24.2% of the population of Gerrards Cross South were born outside of the UK;
- within Gerrards Cross South there is a high percentage of owner occupied housing which makes up 91.1% of the household tenure within the Ward, this is 13.1% higher than the average for South Bucks.
- 87.2% of the accommodation within Gerrards Cross South is detached housing which is over 44% higher than the District average; 73.1% of houses fall in the G-H bands (the higher council tax bands) for Gerrards Cross Parish which is 41.5% higher than the District average;
- for Gerrards Cross South there is a higher percentage of married couple households with children (12.4% higher) than the District average;
- based on Acorn Data the main type of grouping within this Ward are 'Wealthy Achievers' who make up 87.9% of the Ward, this is over 27.6% higher than the District average;
- within Gerrards Cross South 40.4% of people aged 16 to 74 have higher level qualifications which is 11.8% higher than the average for South Bucks.
- within the Ward there are 19.2% of people who work mainly at or from home which is 6.1% higher than the District average;
- 83.3% of people within Gerrards Cross South declare themselves as having good health, this is 8% higher than the average for South Bucks;
- for the overall level of deprivation both LSOAs in Gerrards Cross South fall in the least deprived 14% in England.

Population

Age structure

Source: Office of National Statistics—mid year population estimates 2009 ward & district level

In 2009 the population of Gerrards Cross South Ward was 3,529 with males making up 49.1% of the population and females making up 50.9%. The age breakdown of the Ward's population is shown in the table.

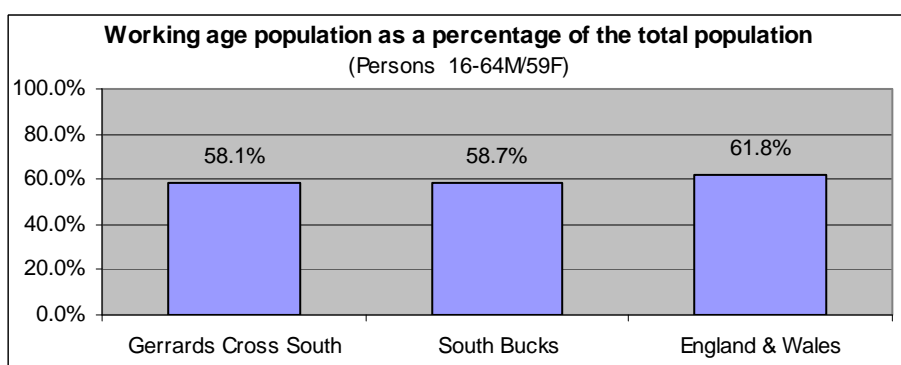
	Total	0-4	5-14	15-19	20-44	45-64	65+
Gerrards Cross South	3,529	4.7%	15.7%	6.9%	24.3%	32.5%	15.9%
South Bucks	66,600	5.7%	12.5%	5.7%	29.7%	27.9%	18.3%
England & Wales	-	6.1%	11.3%	6.4%	34.5%	25.3%	16.4%

- There were 965 people within the 0-19 age group living within the Ward which contributes 27.3% to the population of Gerrards Cross South; this is 3.4% higher than the average of 23.9% for South Bucks.
- The 65 and over age group make up 15.9% of the Ward this is lower than the average of 18.3% for South Bucks and slightly lower than the England & Wales average.
- There was a 4.5% increase in population in the ward from 2005-2009 based on mid year estimates, slightly lower than the average increase for South Bucks of 4.7%.

Working Age Population

Source: Office of National Statistics—2010 Ward Population Estimates, mid-2009 (experimental statistics) - working age

Based on mid-2009 figures the working age population makes up 58.1% of the population of Gerrards Cross South, this is 0.6% lower than the average for South Bucks and 3.7% lower than the average for England & Wales.



Population Projections

Source: 2008-based sub national population projections, Office for National Statistics/Bucks Strategic Partnership (BSP) population projections October 2010

National population projections are not available at ward level but based on the latest national population projections South Bucks District is predicted to have a population increase of 25.9% over the next 25 years from 65,700 to 82,700 in 2033. The projections are trend based which means assumptions for future levels of births, deaths and migration are based on observed levels (they do not take into account any future policy changes that have not yet occurred). Within these figures based on projections for the district from 2008 to 2033:

- the 0-19 age group is predicted to rise by 20.1% (England 10.4%);
- the 20-64 age group by 15.5% (England 8.3%); and
- the 65+ age group by 63.9% (England 65.3%).

Local population projections at district and ward level (commissioned by Bucks CC) have been produced which take account of additional datasets including housing provision in the area and other local inputs. These put the population at 67,550 in 2026 (a difference of over 11,000 from the national projections for 2026). The projections cover a different time period and the age group breakdown is different. The significant variances between the projections means caution needs to be applied when using these figures as a realistic figure is more likely to fall somewhere between the two predictions (further information about both sets of projections can be found on KnowledgeSource).

Based on the BSP projections for Gerrards Cross South the estimated population is forecasted to decrease from 3,600 in 2009 to 3,550 in 2026 a decrease of 1.4%. Looking at a split down by age group based on projections for the ward from 2009 to 2026:

- the 0-17 age group is predicted to decrease from 950 to 800 (-15.8%)
- 18—retired* age group is predicted to rise from 1,950 to 1,750 (-10.3%)
- retired* + age group is predicted to rise from 700 to 950 (35.7%)

(*retired is 60 for females and 65 for males)

Population Density

Source: Table UV02, ONS, Census 2001

The number of persons per hectare in Gerrards Cross South based on the 2001 Census information was 6.39, this is higher than the average of 4.38 for South Bucks and 3.45 for England and Wales.

Ethnicity

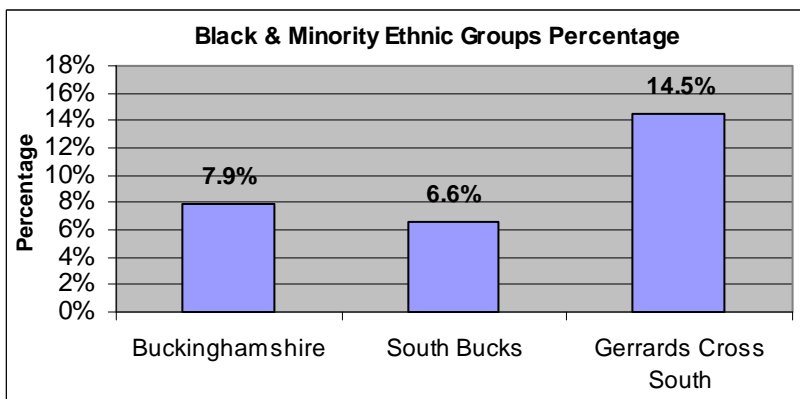
Source: Table KS06 & UV08, Census 2001/ Nomisweb standard tables, ONS.

Resident Population Estimates by Ethnic Group (experimental), 2009, Office for National Statistics.

Based on 2001 Census information 72.0% of the population of Gerrards Cross South Ward stated their ethnicity as White British; this is lower than the 86.5% average for South Bucks. 11.7% of the population of the Ward declare their ethnicity as Other-White, higher than the 5.1% average for South Bucks.

There are 14.5% of the population who are from Black & Minority Ethnic (BME) Groups this is higher than the 6.6% average for South Bucks. This is split down into the following BME Groups.

BME mix	Percentage
Mixed	2.1%
Asian or Asian British	10.3%
Black or Black British	0.4%
Chinese or other ethnic group	1.6%



The BME groups tend to be higher in the younger age group as the split below shows:

- For the 0-19 age group 19.8% of the population are from BME Groups (10.2% South Bucks average)
- For the 20-64 age group 14.3% of the population are from BME groups (6.7% South Bucks average)
- For the 65 and over age group 4.4% of the population are from BME groups (1.5% South Bucks average)

Looking at the change from the 1991 to 2001 Census for South Bucks District, 3.3% identified with one of the non-white ethnic categories in 1991 compared to 6.6% in 2001, an increase of 3.3%. Based on experimental population estimates for 2009 13.1% of the population in South Bucks were from a non-white ethnic group.

24.2% of the population of Gerrards Cross South were born outside of the UK which is higher than the District average of 12.2%. The Ward population born outside the UK are predominantly from North America (6.4%), Asia (5.9%), other Western European countries (4.5%) and Africa (3.7%), this is higher than the District

Religion

Source: Table KS07, ONS, Census 2001

Based on 2001 Census information 71% of the population of Gerrards Cross South Ward stated their religion as Christianity; this is lower than the 75.6% average for South Bucks. 3.3% stated their religion as Hindu and 3.1% stated their religion as Muslim which is highest percentage compared to other Wards in the District.

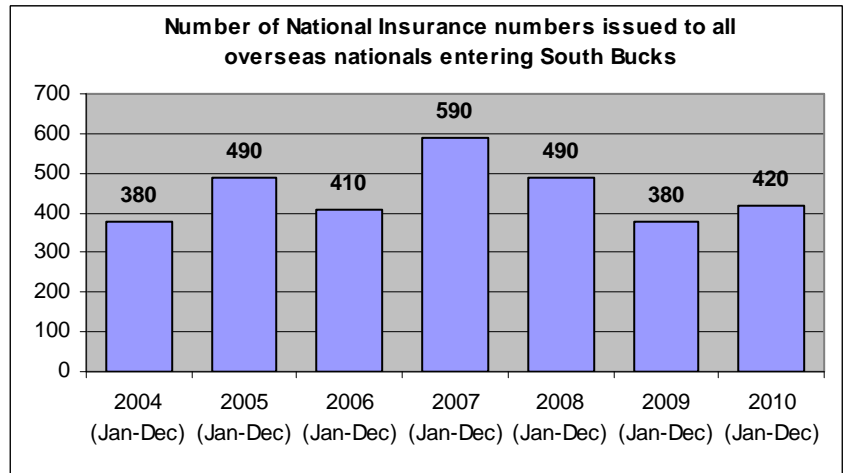
People stating religion as:	Gerrards Cross South	South Bucks	England and Wales
Christian	71.0%	75.6%	71.8%
Buddhist	0.7%	0.3%	0.3%
Hindu	3.3%	1.2%	1.1%
Jewish	1.2%	0.5%	0.5%
Muslim	3.1%	1.1%	3.0%
Sikh	3.9%	1.6%	0.6%
Other religions	0.1%	0.3%	0.3%
No religion	9.7%	12.5%	14.8%
Religion not stated	6.9%	6.9%	7.7%

Migrant Workers

Source: DWP 2010, Local Area Migration Indicators table from Office of National Statistics

Overseas nationals obtain a National Insurance (NI) Number before they enter into employment or upon starting work, so registrations data can be a good indication of new arrivals who are economically active. (Some foreign nationals do obtain a NI number but do not take up employment e.g. refugees will need an NI number but will not all be economically active.)

These figures are only available at district level and do not go down to ward level.



The top 6 nationalities for overseas nationals who are issued a National Insurance number entering South Bucks in 2010 were Poland, India, Australia, Germany, Italy and Spain.

Environment

Land Use Statistics

Source: Generalised Land Use Database Statistics 2005, Communities and Local Government (last updated Jan-07)

The following data is taken from experimental statistics from January 2005 from the generalised land use database. The total area of all land types for Gerrards Cross South is 527 hectares which makes up 3.7% of the land in the District. The main type of land use is greenspace and makes up 61.1% of the land use for the Ward. Communities and Local Government consider the 2005 figures to be the definitive land use statistics. No further work is planned on the Generalised Land Use Database.

Type of land use	Hectares	% of ward area that land use type makes up	% of district that land use type makes up
Area of Domestic Buildings	16.5	3.1%	1.7%
Area of Non Domestic Buildings	1.5	0.3%	0.8%
Area of Road	33.9	6.4%	4.2%
Area of Path	-	0.0%	0.2%
Area of Rail	0.0	0.0%	0.2%
Area of Domestic Gardens	141.4	26.9%	11.2%
Area of Greenspace	321.6	61.1%	77.5%
Area of Water	4.8	0.9%	2.0%
Area of Other Land Uses	6.1	1.2%	2.2%
Area of Unclassified Land	0	0.0%	0.0%

Based on figures from the Council's 2009/10 Annual Monitoring Report for Gerrards Cross Parish there were:

- 161.0 hectares of land designated as Area of Attractive Landscape (designation by Bucks CC)
- 1 conservation areas within Gerrards Cross Parish and 34 listed buildings

Housing

Household Tenure

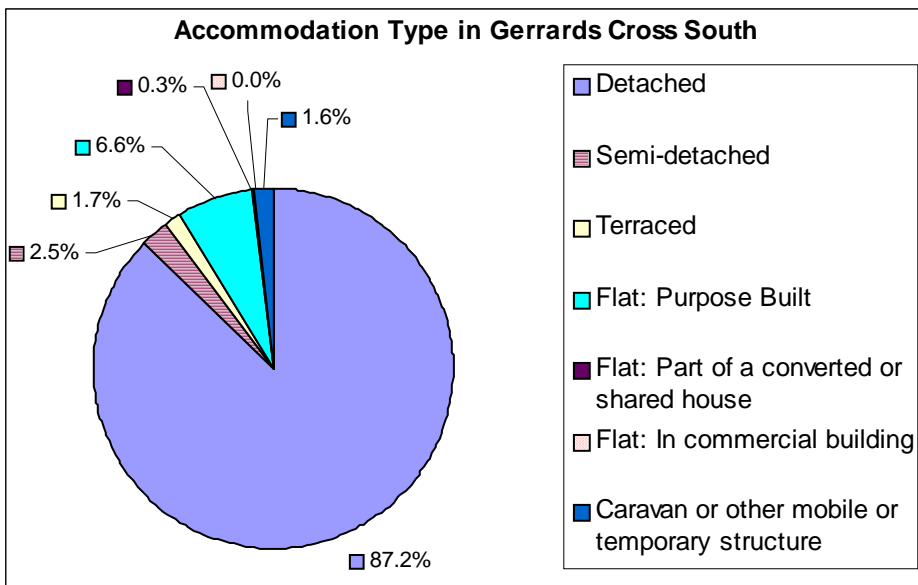
Source: Table KS18, ONS, Census 2001

Within Gerrards Cross South there is a high percentage of owner occupied housing which makes up 91.1% of the household tenure within the Ward, this is 13.1% higher than the average for South Bucks and is 22.2% higher than the England average. Just over 47% of this owner occupied housing is owned outright.

Household Tenure	Gerrards Cross South	South Bucks	England & Wales
Owner Occupied	91.1%	78.0%	68.9%
Social Rented: Council/ Housing Association/ Registered Social Landlord	0.3%	12.6%	19.2%
Private Rented: Private landlord or letting agency	7.0%	6.1%	8.7%
Other	1.6%	3.3%	3.2%

Accommodation Type

Source: Table KS16, ONS, Census 2001



Based on the 2001 Census there were 1176 households in Gerrards Cross South, 93.9% of these were lived in and 6.1% were either vacant or used as a second residence or holiday accommodation.

87.2% of the accommodation within Gerrards Cross South is detached housing which is 44.3% higher than the District average of 42.9% and over 64% higher than the England and Wales average.

Household Composition

Source: Table KS20, ONS, Census 2001

The table below shows the household composition in 2001 for Gerrards Cross South compared to the average for the District. The main difference to the District average is there is a higher percentage of married couple households with children (12.4% higher) and a lower percentage of single non-pensionable households (6.5% lower) and single pensioner households (3.0% lower).

⇒ There were 21 lone parent households with dependent children.

Household Composition	Gerrards Cross South (Number)	Gerrards Cross South (%)	South Bucks District average (%)	Difference
Single non-pensionable households	58	5.3%	11.7%	-6.5%
Single pensioner	124	11.3%	14.3%	-3.0%
All other pensioner households	151	13.7%	11.9%	1.8%
Married couple households: No children	188	17.1%	14.9%	2.2%
Married couple households: With children	452	41.0%	28.6%	12.4%
Cohabiting couple households: No children	19	1.7%	4.1%	-2.4%
Cohabiting couple households: With children	10	0.9%	2.6%	-1.7%
Lone parent households: With dependent children	21	1.9%	3.3%	-1.4%
Lone parent households: All children non-dependent	13	1.2%	2.8%	-1.7%
Student households	0	0.0%	0.0%	0.0%
Other households: With dependent children	40	3.6%	2.3%	1.4%
Other households: Other	26	2.4%	3.3%	-1.0%

Council Tax Banding

Source: Valuation list for the authority on 4th Oct 2010

Council tax information can provide an overview of house value within an area, however whilst they provide an overview it should be noted that these bandings were created several years ago. This information is only available at a parish level rather than by ward. The percentage of houses falling in the G-H bands (the higher council tax bands) for Gerrards Cross Parish is 41.5% higher than the District average.

Parish	Dwelling Count	Bands A-C	Bands D-F	Bands G-H
Gerrards Cross	3,026	4.9%	22.0%	73.1%
South Bucks District	27,628	17.6%	50.8%	31.6%

House prices

Source: DCLG tables from Land Registry data—2010

The average house price in 2010 in South Bucks based on house sales was £536k over 47% higher than the average for Buckinghamshire. The average for Chiltern was £457,202, Wycombe was £338,294 and Aylesbury Vale was £273,022.

Acorn Data

Source: Acorn Data 2010, produced by CACI.

Acorn Data provides useful data about the characteristics of people based on the postcode in which they live. Using data from a range of sources, every postcode is classified into one of 5 categories, which split down into further groups. This data provides useful information to start to understand the feelings, behaviours and expectations of each group. N.B All category names are already defined on the database.

Area	Wealthy Achievers	Urban Prosperity	Comfortably Off	Moderate Means	Hard Pressed	No Classification
Gerrards Cross South	87.9%	5.5%	4.4%	0.0%	0.0%	2.2%
South Bucks	60.3%	10.9%	21.6%	2.1%	3.8%	1.3%

Looking at the five main categories it shows that Gerrards Cross South has a higher percentage of 'Wealthy Achiever' households than the District average by 27.6%. It also shows that 0% of households fall within the 'Moderate Means' or 'Hard Pressed' categories. The tables below provide a detailed split down into smaller groupings which provide an idea of the type of households within each category.

Category 1 - Wealthy Achievers	Ward %	District %
Wealthy Mature Professionals	84.6%	24.2%
Villages with Wealthy Commuters	1.1%	14.4%
Well Off Managers	0.0%	4.8%
Affluent Greys	2.2%	6.7%
Flourishing Families	5.5%	10.3%

Category 2 - Urban Prosperity	Ward %	District %
Urban Professionals	4.4%	10.9%

Category 3 - Comfortably Off	Ward %	District %
Secure Families	0.0%	13.3%
Settled Suburbia//Prudent Pensioners	0.0%	8.4%

Category 4 - Moderate Means	Ward %	District %
Moderate Means	0.0%	2.1%

Category 5 - Urban Prosperity	Ward %	District %
Hard Pressed	0.0%	3.8%

Unclassified	Ward %	District %
Unclassified	2.2%	1.3%

The main type of grouping within this Ward are 'Wealthy Mature Professionals'. The suggested characteristics of this group are that their household income of is extremely high. Their affluence and middle aged family profile may be linked to the importance they place on further education and secondary school education, where there is a strong engagement to attain qualifications. Public and private transport is important, with higher rates of car ownership and commuting by train/tube, but people are also more likely to work from home. People are less satisfied with transport.

Employment & Education

Economically active

Source: CAS028, ONS, Census 2001

Based on information from the 2001 Census 69.9% of the working age population within the Ward are economically active, this is 8% lower than the average of 77.9% for the District. The female and male breakdown shows that there is only 56.6% of the female working age population who are economically active within Gerrards Cross South which is 12% lower than the District average of 69.9%.

	Gerrards Cross South	South Bucks	Great Britain
Economically active (% of working age population)			
All People	69.9%	77.9%	74.0%
Males	84.0%	87.7%	81.4%
Females	56.6%	68.6%	66.8%
Unemployed (% of economically active)			
All People	1.7%	3.0%	5.7%

1.7% of the economically active population are unemployed in Gerrards Cross South which is 1.3% lower than the District average.

Based on latest estimates the economically active rate for South Bucks is 76.5% and the rate for Great Britain is 76.2% (source: Annual Population Survey Jan - Dec 2010).

Hours worked

Source: CAS029, ONS, Census 2001

The table opposite shows that 75.1% of the people in employment within the Ward work full-time hours and 24.9% work part-time hours. Looking at the split down by sex, 89.9% of males worked full time and 10.1% worked part time and 54.3% of females worked full time and 45.7% worked part time.

	Gerrards Cross South	South Bucks	Great Britain
Hours worked - for all people in employment			
Full time	75.1%	77.4%	75.9%
Part time	24.9%	22.6%	24.1%

Employment by Occupation

Source: CAS033, ONS, Census 2001

For the population of Gerrards Cross South the top 3 occupation groups are:

- Managers and Senior Officials who make up 38.2% (South Bucks Average 25.8%)
- Professional who make up 17.5% (South Bucks Average 13.4%)
- Associate Professional and Technical who make up 14.0% (South Bucks Average. 15.4%)

These 3 occupation groups contribute almost 70% of occupations for the Ward.

Jobseeker's Allowance (JSA) Claimants

Source: ONS claimant count with rates and proportions, Nomisweb (June 2011)

Within Gerrards Cross South Ward there were 10 people claiming Job Seekers Allowance based on a quarterly snapshot from June 2011. This accounts for 0.5% of the working age population which is lower than the South Bucks average of 1.3% and Great Britain average of 3.7%.

Education

Source: CAS032, ONS, Census 2001

Within Gerrards Cross South 40.4% of people aged 16 to 74 have higher level qualifications which is 11.8% higher than the average for South Bucks. Only 15% have no qualifications which is 11.7% lower than the South Bucks average and over 20% lower than the Great Britain average.

	Gerrards Cross South (numbers)	Gerrards Cross South %	South Bucks %	Great Britain %
No qualifications or level unknown ¹	344	15.0%	26.7%	35.8%
Lower level qualifications ²	1025	44.6%	44.6%	43.9%
Higher level qualifications ³	928	40.4%	28.6%	20.4%

¹ People without any academic, vocational or professional qualification or level unknown

² Qualifications equivalent to Level 1 to 3 of the National Key Learning Targets (i.e. GCSE's, O-Levels, A-Levels, NVQ Level 1-3)

³ Qualifications of Level 4 & above (i.e. first/higher degrees, NVQ Level 4 & 5, HND, HNC & other professional qualifications)

Travel

Distance Travelled to Work

Source: Table UV35, ONS, Census 2001

The table below shows the distance travelled to work for all people aged 16 to 74 who were in employment based on information collected in the 2001 Census.

	Gerrards Cross South	South Bucks	South East	England & Wales
Works mainly at or from home	19.2%	13.1%	9.9%	9.2%
Less than 2km	8.7%	12.2%	20.4%	20.0%
2km to less than 5km	6.8%	15.3%	17.6%	20.0%
5km to less than 10km	14.7%	19.5%	15.2%	18.2%
10km to less than 20km	19.9%	16.4%	13.7%	15.2%
20km to less than 40km	23.2%	14.9%	10.3%	7.7%
40km and over	3.4%	3.3%	7.5%	4.9%
No fixed place of work	3.4%	4.9%	5.1%	4.4%
Other	0.7%	0.4%	0.3%	0.3%

Within Gerrards Cross South there are 19.2% of people who work mainly at or from home which is 6.1% higher than the District average. There are 46.5% of people who travel over 10km to work which is 11.9% higher than the average for the District.

Method of Travel to Work

Source: Table UV39, ONS, Census 2001

The table below shows the method of travel to work for the usual resident population aged 16 to 74 who were in work based on information collected in the 2001 Census.

	Gerrards Cross South	South Bucks	South East	England & Wales
Driving a car or van	61.0%	65.0%	59.2%	55.2%
On foot	2.8%	5.9%	9.9%	10.0%
Works mainly at or from home	19.2%	13.1%	9.9%	9.2%
Bus, minibuss or coach	1.1%	1.5%	4.4%	7.4%
Passenger in a car or van	2.9%	4.3%	5.7%	6.3%
Train	9.2%	5.8%	5.6%	4.1%
Underground, metro, light rail or tram	2.5%	1.3%	0.2%	3.0%
Bicycle	0.0%	1.5%	3.1%	2.8%
Motorcycle, scooter or moped	0.4%	0.8%	1.1%	1.1%
Other	0.9%	0.8%	0.9%	1.0%

Within Gerrards Cross South there is a higher percentage of people who work mainly at or from home than the District average. There is also a higher percentage of people who travel to work by train or underground which is 4.6% higher than the District average, with fewer people travelling to work on foot or by bicycle than the District average.

Car and Van Ownership

Source: Table UV62, ONS, Census 2001

The table below shows that in 2001 that 2.4% of households in Gerrards Cross South did not own a car or van which was 8.7% lower than the District average. 24.1% of households owned 3 or more cars or vans, which was over 10% higher than the District average.

	Gerrards Cross South	South Bucks	South East	England & Wales
No car or van	2.4%	11.1%	19.4%	26.8%
1 car or van	23.8%	36.0%	42.6%	43.8%
2 cars or vans	49.7%	38.9%	29.6%	23.5%
3 or more cars or vans	24.1%	14.0%	8.4%	5.9%

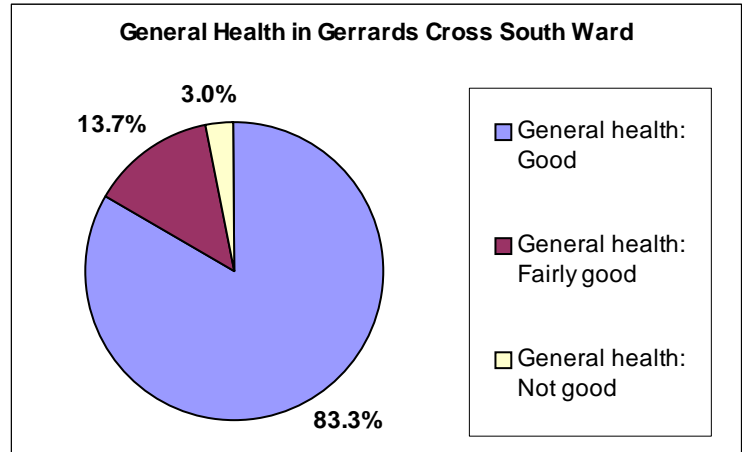
Health

General Health & Limiting Long-term Illness

Source: Table KS08, ONS, Census 2001

83.3% of people within Gerrards Cross South Ward declare themselves as having good health, this is 8% higher than the average for South Bucks. The Ward percentage is 14.7% higher than the England and Wales average of 68.6% who declared they had good health.

People declaring themselves as having not good general health in the Ward is lower than the average for the District and England and Wales.



In 2001 there was an estimated 8.9% of the population of Gerrards Cross South who had a limiting long-term illness which equates to 287 people, this percentage is lower than the average for South Bucks of 13.1% and lower than the average for England and Wales which is 18.2%.

Provision of Unpaid Care

Source: Table KS08, ONS, Census 2001

Within the Gerrards Cross South Ward 7.9% of the population provide some form of unpaid care, this equates to 254 people. The split down of this is as follows:

- 78.7% (200 people) were providing 1-19 hours unpaid care a week
- 9.1% (23 people) were providing 20-49 hours unpaid care a week
- 12.2% (31 people) were providing 50 or more hours unpaid care a week

Disability Living Allowance Claimants

Source: Department of Work and Pensions, August 2010

Disability Living Allowance is payable to people who are disabled and who have personal care needs, mobility needs or both. It consists of two components, the care component for people who need help with personal care and the mobility component for people who need help with getting around.

Within Gerrards Cross South Ward there were 40 people claiming Disability Living Allowance based on figures from August 2010 which accounted for about 2.4% of the total claimants for South Bucks. The age breakdown of claimants is shown in the table opposite. 20 of the claimants were male and 20 were female.

Of the people claiming disability living allowance:

- 0 had a claim duration for less than 12 months,
- 0 had a claim duration for between 1 & 2 years,
- 10 had a claim duration which was between 2 & 5 years
- 30 had a claim duration which was 5 years and over

Claimants Age	Count of Claimants
Claimants Aged Under 16	5
Claimants Aged 16-24	5
Claimants Aged 25-49	10
Claimants Aged 50-59	0
Claimants Aged 60-69	15
Claimants Aged 70 and Over	5

Incapacity Benefit/Severe Disablement Allowance is a benefit provided to people due to them being incapable of work through illness or disability. This includes Sickness/Invalidity Benefit and Severe Disablement and Incapacity Benefit. Within the Gerrards Cross South Ward there were 20 people claiming this type of benefit, all of which were Incapacity Benefit Claimants.

Data has been rounded to base 5 for all figures in order to protect small counts.

Deprivation

Source: *Indices of Multiple Deprivation 2010, CLG.*

The Indices of Multiple Deprivation 2010 (IMD 2010) is a measure of deprivation at the small area level—Lower Super Output Area (LSOA). England is split into 32,482 LSOAs, LSOAs have a minimum population of 1000, and overall average population of 1500, and were ranked to create the IMD. All of the LSOAs in England are ranked, the LSOA ranked 1 by the IMD 2010 is the most deprived and the LSOA ranked 32,482 is the least deprived.

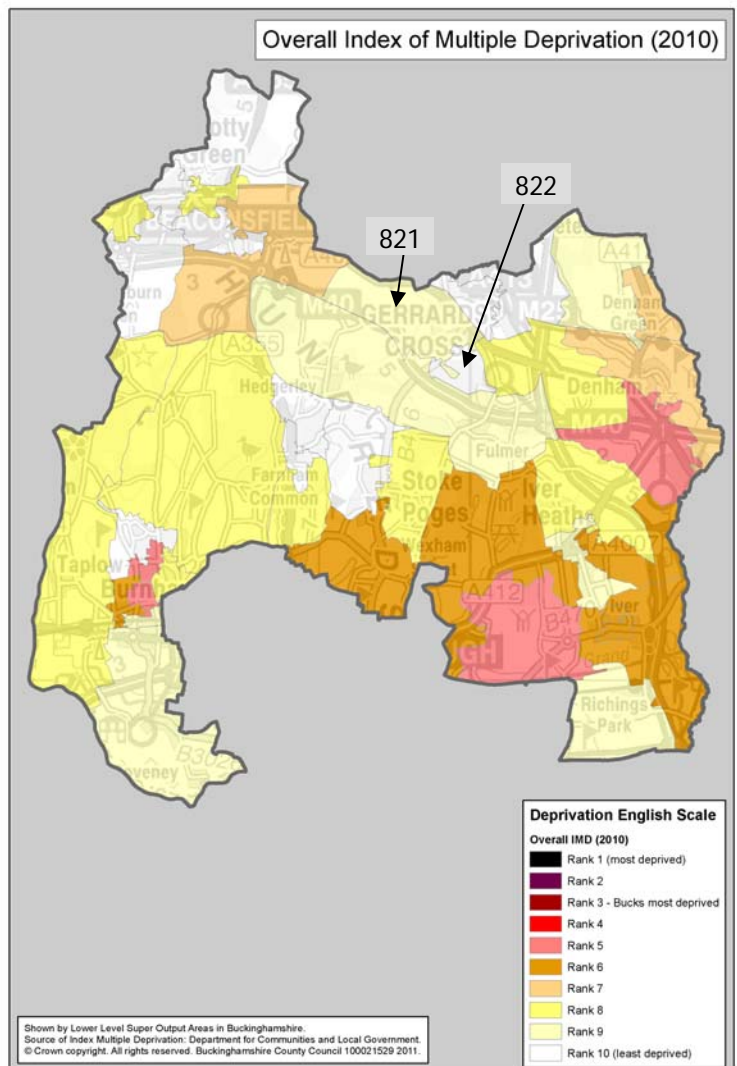
- Gerrards Cross South Ward is made up of 2 LSOAs (821 & 822 —locations shown on the map).

The IMD model is based on 7 distinct dimensions of deprivation which are then given a weighting to work out an overall ranking for deprivation as the table below shows.

Domain	Weighting
Income Deprivation	22.5%
Employment Deprivation	22.5%
Health Deprivation & Disability	13.5%
Education, Skills & Training Deprivation	13.5%
Barriers to Housing and Services	9.3%
Crime & Disorder	9.3%
Living Environment Deprivation	9.3%

The different domains

- Income Deprivation covers a range of indicators including adults and children in Income Support/ Income-Based JSA/ Pension Credit/ Working Tax Credit or Child Tax Credit households or National Asylum Support Services supported asylum seekers in receipt of subsistence/accommodation support.
- Employment Deprivation measures involuntary exclusion of working age population from the labour market. This includes indicators on recipients of Jobseekers Allowance, Incapacity Benefits, Severe Disablement Allowance, participants in the New Deal for the 18 -24s/25+ who are not in receipt of JSA or participants in the new deal for lone parents.
- Health Deprivation and Disability domain measures rates of poor health, early mortality and disability in an area and covers the entire age range, it includes indicators on years of potential life lost, comparative illness and disability ratio, proportion of adults under 60 suffering from mood or anxiety disorders and measures of acute morbidity.
- Education Skills and Training Deprivation covers two sub-domains: one relating to education deprivation for children/young people in the area, and one relating to lack of skills and qualifications among a sub-set of the working age population.
- Barriers to Housing and Services domain splits into two sub-domains: geographical barriers which looks at road distance to a GP surgery/general stores or supermarket/primary school and to a Post office; wider barriers includes issues relating to access to housing such as affordability and household overcrowding.
- Crime domain measures the rate of recorded crime for four major crime types, representing the risk of personal and material victimisation at a small area level. These include Burglary, Theft, Criminal Damage and Violence.
- Living environment deprivation comprises two sub-domains: the 'indoors' which measures the quality of housing, and the 'outdoors' which contain two measures about air quality and road traffic accidents.



For the overall level of deprivation both LSOAs in Gerrards Cross South fall in the least deprived 14% in England.

For each LSOA within Gerrards Cross South the table below shows the rank out all the LSOAs in England, the deprivation percentage and the rank compared to the other LSOAs in the District for each domain.

Domain	LSOA	Rank out of 32,482 LSOAs in England 1 most deprived / 32,482 least deprived	Deprivation % 0 = most deprived 100 = least deprived	Rank out of LSOAs in District 1 = lowest rank 40= highest rank
Overall Deprivation	821	27,962	86.08%	27/40
	822	30,119	92.73%	32/40
Income Deprivation	821	26,960	83.00%	21/40
	822	31,817	97.95%	35/40
Employment Deprivation	821	31,559	97.19%	33/40
	822	32,363	99.63%	40/40
Health Deprivation & Disability	821	32,462	99.94%	39/40
	822	32,466	99.95%	40/40
Education, Skills & Training Deprivation	821	32,296	99.43%	36/40
	822	32,156	99.00%	35/40
Barriers to Housing & Services	821	4,969	15.30%	7/40
	822	3,522	10.84%	4/40
Crime & Disorder	821	18,025	55.49%	36/40
	822	29,621	91.19%	40/40
Living Environment Deprivation	821	23,714	73.01%	26/40
	822	31,725	97.67%	40/40

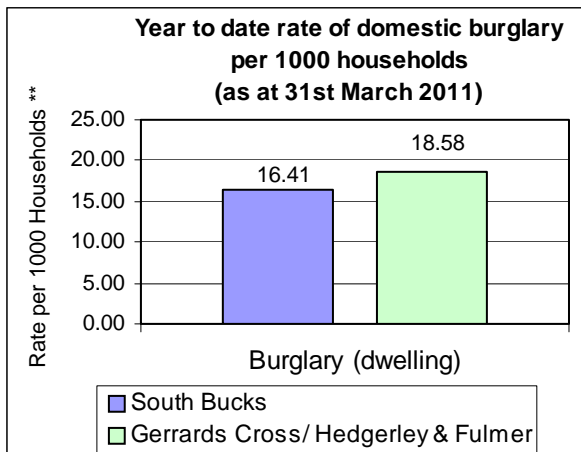
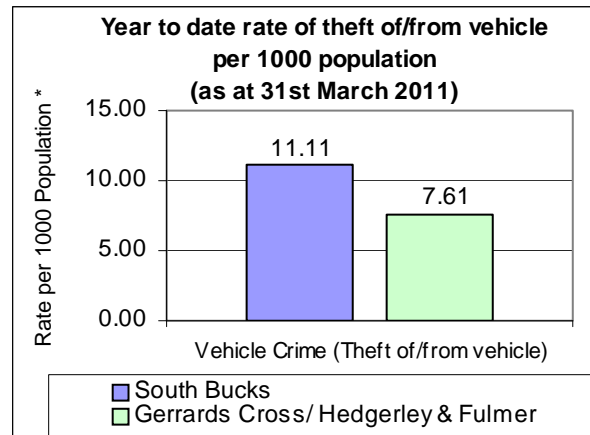
- For Income Deprivation both LSOAs in Gerrards Cross South fall within the least deprived 17% in England, with LSOA 822 ranking 35 out of 40 when compared to the other LSOAs in the District.
- For Employment Deprivation, Health Deprivation & Disability and Education, Skills & Training Deprivation both LSOAs in Gerrards Cross South fall within the least deprived 3% in England.
- Barriers to Housing & Services is relatively high and LSOA 821 and LSOA 822 fall within the most deprived 7 LSOAs in the District for this domain. LSOA 821 falls in the most deprived 16% in England and LSOA 822 falls in the most deprived 11% in England.
- For Crime & Disorder LSOA 821 falls in the least deprived 45% in England and LSOA 822 falls in the least deprived 99% in England and is the least deprived LSOA when compared to all the other LSOAs in the District.
- For Living Environment Deprivation SOA 821 falls in the least deprived 27% in England and SOA 822 falls in the least deprived 3% in England and is the least deprived LSOA for this type of deprivation compared to the other areas in the District.

Crime

Source: Thames Valley Police Crime Summary for South Bucks District as at 31st March 2011

Information on crime levels is produced at the Police Neighbourhood level rather than by Ward. The information is based on year to date crime summaries produced by Thames Valley Police for the District. This neighbourhood group includes the parishes of Gerrards Cross, Hedgerley & Fulmer.

The graph opposite shows that for the Gerrards Cross/Hedgerley/Fulmer police neighbourhood area the rate of theft of or from a vehicle per 1,000 population is much lower than the average for the District. Based on the previous years reporting, vehicle crime decreased by 46.3% for this police neighbourhood area from 134 incidents in 2009/10 to 72 incidents in 2010/11.



The rate of domestic burglary per 1,000 households for the Gerrards Cross/ Hedgerley/Fulmer police neighbourhood area is higher than the District average. The number of domestic burglaries for this police neighbourhood area decreased from 66 in 2009/10 to 64 in 2010/11.

* Population figures to work out the rates per 1000 population are based on the Civil Parish population estimates in South Bucks, mid-2009.

** Household figures to work out the rates per 1000 households are based on the 2001 census data for Parishes and includes new housing completions per parish from 2001-2011. Data inaccuracy may occur due to boundary variations.

The table below shows the number of offences over the last three years for the Beaconsfield police neighbourhood area and the District:

Number of offences	Gerrards Cross/Hedgerley & Fulmer					South Bucks				
	2008/2009	2009/2010	% change	2010/2011	% change	2008/2009	2009/2010	% change	2010/2011	% change
Vehicle Crime Theft of/from vehicle)	106	134	20.9%	72	-46.3%	1125	1003	-10.8%	740	-26.2%
Burglary (Dwelling)	101	66	-53.0%	64	-3.0%	601	511	-15.0%	432	-15.5%
All Crime	596	688	15.4%	644	-6.4%	6323	5809	-8.1%	4843	-16.6%

Crime statistics for the District are produced by Thames Valley Police on a monthly basis and should be used for up to date trend information. There are some differences between the neighbourhood police area figures and the overall South Bucks figures due to different timelines in producing the report and crimes that are reclassified over the reporting period.

When using this Ward Profile please note that information is taken from a variety of sources and SBDC can not vouch for its accuracy & reliability. Many statistics come from the 2001 Census so this should be taken into account when utilising these figures as these are now 10 years old.

Some of the data contained in this profile is protected by various copyrights and cannot be re-used elsewhere without permission of the relevant copyright holder (please refer to source data for more information).