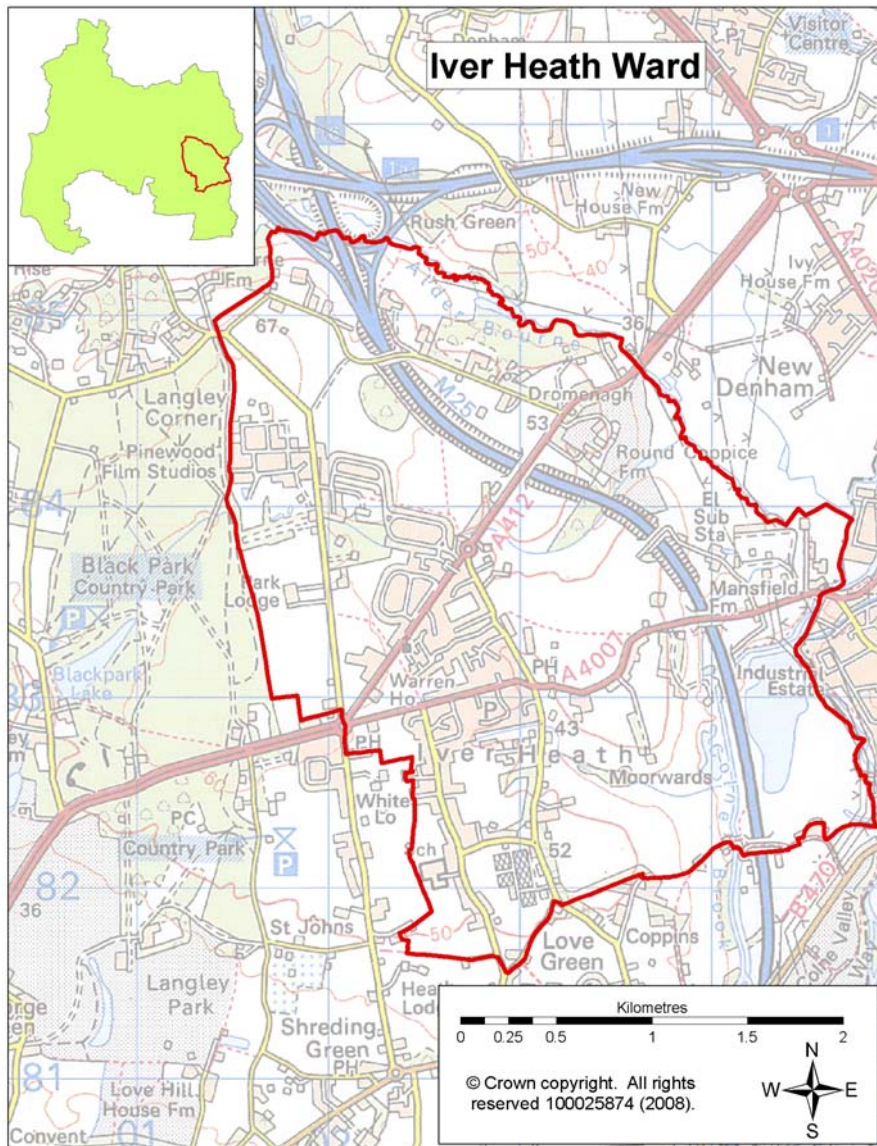


This ward profile aims to provide an overview of information about the Iver Heath Ward. The majority of this information is at ward level for Iver Heath, except for a small number of statistics which are only available at parish or district level.



## Summary of key points:

- the main type of accommodation type in Iver Heath was Semi-detached housing which accounted for 44.1%, higher than the District average of 25.3%. There was also 17.8% of purpose built flats which was 4.4% higher than the District average;
- based on Acorn Categories 34.6% of people fall into the 'Comfortably Off' category which is 13% higher than the District average. 12.5% fall into the 'Hard Pressed' grouping which is 8.7% higher than the District average;
- based on information from the 2001 Census 81.4% of the working age population within Iver Heath are economically active, this is 3.5% higher than the average of 77.9% for the District;
- within Iver Heath 33.4% have no qualifications which is 6.7% higher than the South Bucks average but 2.4% lower than the Great Britain average;
- within Iver Heath there were 49.7% of people travelling between 2 and 10km to work which was 14.9% higher than the District average;
- based on the 2010 Indices of Deprivation for the Income Deprivation domain there is a difference between the Lower Super Output Areas (LSOAs) in Iver Heath with two of the LSOAs falling within the least deprived 22% in England and the other LSOA fell in the least deprived 41%;
- the rate of domestic burglary per 1,000 households for Iver Police Neighbourhood area is lower than the average rate for the District. The number of domestic burglaries for Iver has seen a decrease from 146 incidents in 2009/10 to 115 incidents in 2010/11.

## Population

### Age structure

Source: Office of National Statistics—mid year population estimates 2009 ward & district level

In 2009 the population of Iver Heath Ward was 5,030 with males making up 49.0% of the population and females making up 51.0%. The age breakdown of the Ward's population is shown in the table below.

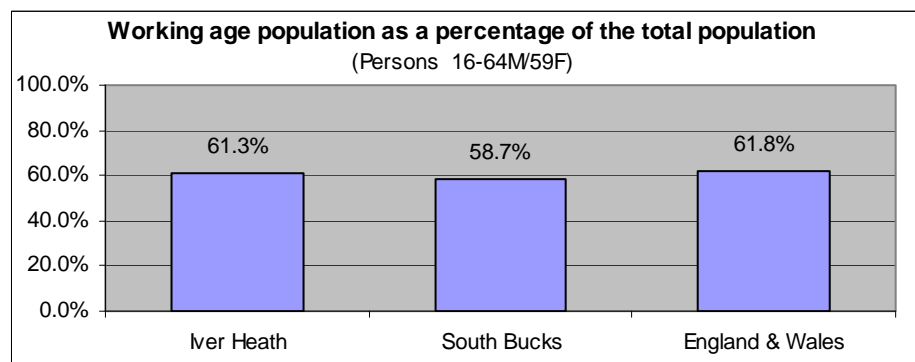
	Total	0-4	5-14	15-19	20-44	45-64	65+
Iver Heath	5,030	5.5%	12.2%	6.2%	32.7%	27.4%	16.0%
South Bucks	66,600	5.7%	12.5%	5.7%	29.7%	27.9%	18.3%
England & Wales	-	6.1%	11.3%	6.4%	34.5%	25.3%	16.4%

- There were 1,199 people within the 0-19 age group living within the Ward which contributes 23.8% to the population of Iver Heath; this is just slightly lower than the average of 23.9% for South Bucks.
- The 65 and over age group make up 16% of the Ward this is lower than the average of 17.5% for South Bucks slightly lower than the England & Wales average.
- There was a 2.9% increase in population in the ward from 2005-2009 based on mid year estimates, lower than the average increase for South Bucks of 4.7%.

### Working Age Population

Source: Office of National Statistics—2010 Ward Population Estimates, mid-2009 (experimental statistics) - working age

Based on mid-2009 figures the working age population makes up 61.3% of the population of Iver Heath, this is 2.6% higher than the average for South Bucks but 0.5% lower than the average for England & Wales.



### Population Projections

Source: 2008-based sub national population projections, Office for National Statistics/Bucks Strategic Partnership (BSP) population projections October 2010

National population projections are not available at ward level but based on the latest national population projections South Bucks District is predicted to have a population increase of 25.9% over the next 25 years from 65,700 to 82,700 in 2033. The projections are trend based which means assumptions for future levels of births, deaths and migration are based on observed levels (they do not take into account any future policy changes that have not yet occurred). Within these figures based on projections for the district from 2008 to 2033:

- the 0-19 age group is predicted to rise by 20.1% (England 10.4%);
- the 20-64 age group by 15.5% (England 8.3%); and
- the 65+ age group by 63.9% (England 65.3%).

Local population projections at district and ward level (commissioned by Bucks CC) have been produced which take account of additional datasets including housing provision in the area and other local inputs. These put the population at 67,550 in 2026 (a difference of over 11,000 from the national projections for 2026). The projections cover a different time period and the age group breakdown is different. The significant variances between the projections means caution needs to be applied when using these figures as a realistic figure is more likely to fall somewhere between the two predictions (further information about both sets of projections can be found on KnowledgeSource).

Based on the BSP projections for Iver Heath the estimated population is forecasted to decrease from 4,850 in 2009 to 4,250 in 2026 a decrease of -12.4%. Looking at a split down by age group based on projections for the ward from 2009 to 2026:

- the 0-17 age group is predicted to decrease from 1,050 to 700 (-33.3%)
- 18—retired\* age group is predicted to decrease from 2,850 to 2,350 (-17.5%)
- retired\* + age group is predicted to rise from 950 to 1,200 (26.3%)

(\*retired is 60 for females and 65 for males)

## Population Density

Source: Table UV02, ONS, Census 2001

The number of persons per hectare in Iver Heath based on the 2001 Census information was 5.58, this is higher than the average of 4.38 for South Bucks and 3.45 for England and Wales.

## Ethnicity

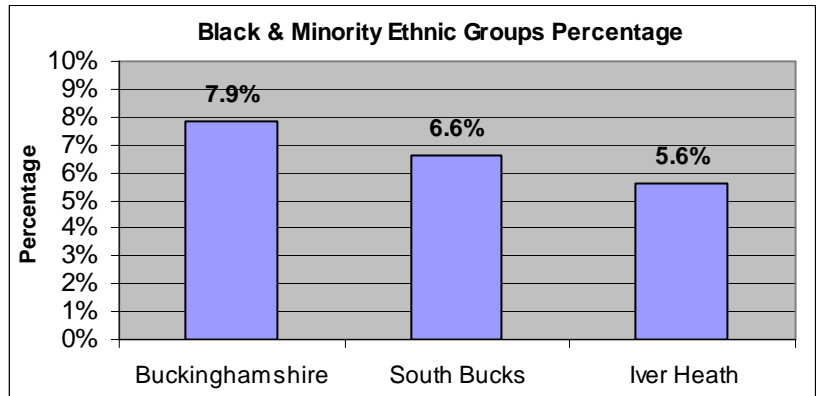
Source: Table KS06 & UV08, Census 2001/ Nomisweb standard tables, ONS.

Resident Population Estimates by Ethnic Group (experimental), 2009, Office for National Statistics.

Based on 2001 Census information 90.2% of the population of Iver Heath Ward stated their ethnicity as White British; this is higher than the 86.5% average for South Bucks. 2.7% of the population of the Ward declare their ethnicity as Other-White, lower than the 5.1% average for South Bucks.

There are 5.6% of the population who are from Black & Minority Ethnic (BME) Groups this is lower than the 6.6% average for South Bucks. This is split down into the following BME Groups.

BME mix	Percentage
Mixed	1.0%
Asian or Asian British	3.9%
Black or Black British	0.4%
Chinese or other ethnic group	0.3%



The split down by age group for BME groups is shown below:

- For the 0-19 age group 6.0% of the population are from BME Groups (10.2% South Bucks average)
- For the 20-64 age group 6.1% of the population are from BME groups (6.7% South Bucks average)
- For the 65 and over age group 0.8% of the population are from BME groups (1.5% South Bucks average)

Looking at the change from the 1991 to 2001 Census for South Bucks District, 3.3% identified with one of the non-white ethnic categories in 1991 compared to 6.6% in 2001, an increase of 3.3%. Based on experimental population estimates for 2009 13.1% of the population in South Bucks were from a non-white ethnic group.

8.4% of the population of Iver Heath were born outside of the UK which is lower than the District average of 12.2%. The Ward population born outside the UK are predominantly from Asia (2.3%), Africa (1.9%) and other Western European countries (1.5%).

## Religion

Source: Table KS07, ONS, Census 2001

Based on 2001 Census information 76.6% of the population of Iver Heath Ward stated their religion as Christianity; this is higher than the 75.6% average for South Bucks. 12.4% stated that they had no religion which is similar to the average for the District.

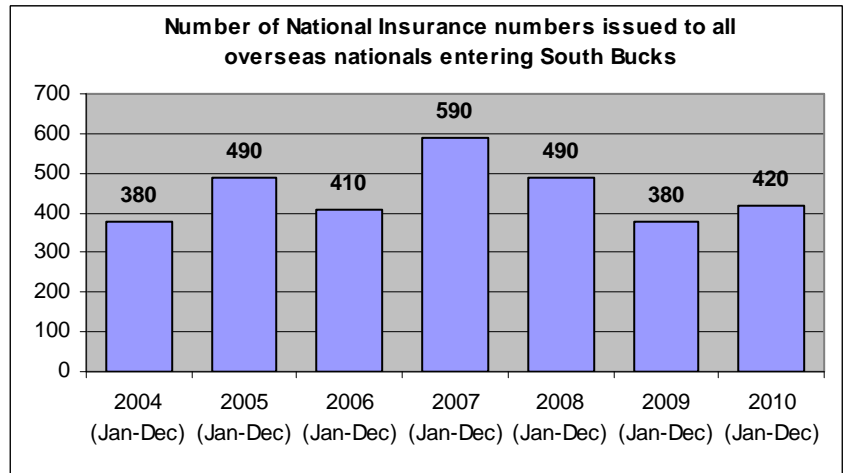
People stating religion as:	Iver Heath	South Bucks	England and Wales
Christian	76.6%	75.6%	71.8%
Buddhist	0.1%	0.3%	0.3%
Hindu	1.6%	1.2%	1.1%
Jewish	0.1%	0.5%	0.5%
Muslim	1.3%	1.1%	3.0%
Sikh	1.3%	1.6%	0.6%
Other religions	0.2%	0.3%	0.3%
No religion	12.4%	12.5%	14.8%
Religion not stated	6.4%	6.9%	7.7%

## Migrant Workers

Source: DWP 2010, Local Area Migration Indicators table from Office of National Statistics

Overseas nationals obtain a National Insurance (NI) Number before they enter into employment or upon starting work, so registrations data can be a good indication of new arrivals who are economically active. (Some foreign nationals do obtain a NI number but do not take up employment e.g. refugees will need an NI number but will not all be economically active.)

These figures are only available at district level and do not go down to ward level.



The top 6 nationalities for overseas nationals who are issued a National Insurance number entering South Bucks in 2010 were Poland, India, Australia, Germany, Italy and Spain.

## **Environment**

### Land Use Statistics

Source: Generalised Land Use Database Statistics 2005, Communities and Local Government (last updated Jan-07)

The following data is taken from experimental statistics from January 2005 from the generalised land use database. The total area of all land types for Iver Heath is 812 hectares which makes up 5.7% of the land in the District. The main type of land use is greenspace and makes up 73.4% of the land use for the Ward.

Communities and Local Government consider the 2005 figures to be the definitive land use statistics. No further work is planned on the Generalised Land Use Database.

Type of land use	Hectares	% of ward area that land use type makes up	% of district that land use type makes up
Area of Domestic Buildings	14.5	1.8%	1.7%
Area of Non Domestic Buildings	14.1	1.7%	0.8%
Area of Road	41.8	5.1%	4.2%
Area of Path	1.1	0.1%	0.2%
Area of Rail	0.0	0.0%	0.2%
Area of Domestic Gardens	90.8	11.2%	11.2%
Area of Greenspace	595.8	73.4%	77.5%
Area of Water	15.9	2.0%	2.0%
Area of Other Land Uses	38.0	4.7%	2.2%
Area of Unclassified Land	0	0.0%	0.0%

Based on figures from the Council's 2009/10 Annual Monitoring Report for Iver Parish there were:

- 1 conservation areas within Iver Parish and 41 listed buildings

## Housing

### Household Tenure

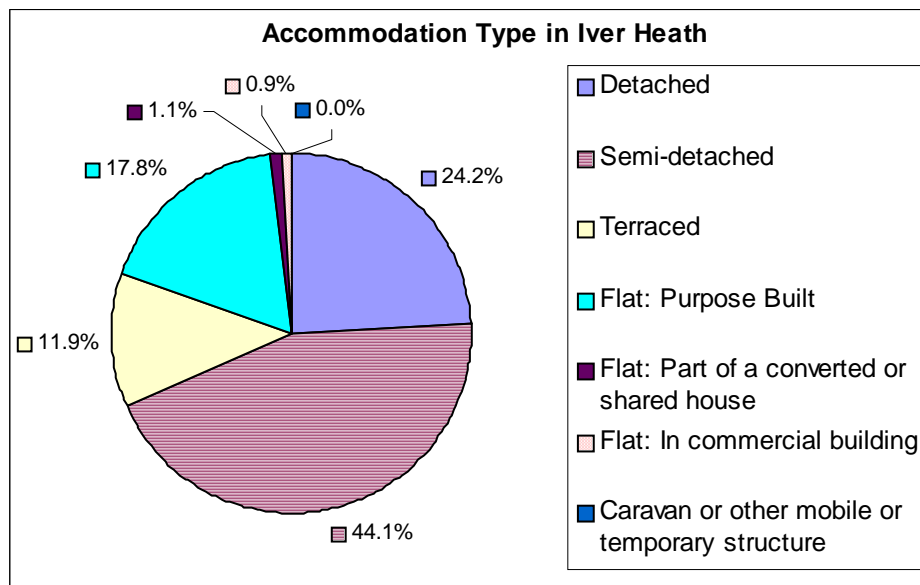
Source: Table KS18, ONS, Census 2001

Within Iver Heath there is a high percentage of owner occupied housing which makes up 79.6% of the household tenure within the Ward, this slightly higher than the District average. 15.4% of households are socially rented which is 2.8% higher than the District average.

Household Tenure	Iver Heath	South Bucks	England & Wales
Owner Occupied	79.6%	78.0%	68.9%
Social Rented: Council/ Housing Association/ Registered Social Landlord	15.4%	12.6%	19.2%
Private Rented: Private landlord or letting agency	2.9%	6.1%	8.7%
Other	2.2%	3.3%	3.2%

### Accommodation Type

Source: Table KS16, ONS, Census 2001



Based on the 2001 Census there were 1923 households in Iver Heath, 96.5% of these were lived in and 3.5% were either vacant or used as a second residence or holiday accommodation.

The main type of accommodation type in Iver Heath was Semi-detached housing which accounted for 44.1%, higher than the District average of 25.3%. There was also 17.8% of purpose built flats which was 4.4% higher than the District average.

### Household Composition

Source: Table KS20, ONS, Census 2001

The table below shows the household composition in 2001 for Iver Heath compared to the average for the District. Figures are similar to the District averages for Iver Heath, there is a slightly higher percentage of cohabiting couple households and slightly less married couple households.

⇒ There were 76 lone parent households with dependent children.

Household Composition	Iver Heath (Number)	Iver Heath (%)	South Bucks District average (%)	Difference
Single non-pensionable households	227	12.2%	11.7%	0.5%
Single pensioner	265	14.3%	14.3%	0.0%
All other pensioner households	196	10.6%	11.9%	-1.4%
Married couple households: No children	250	13.5%	14.9%	-1.4%
Married couple households: With children	533	28.7%	28.6%	0.1%
Cohabiting couple households: No children	91	4.9%	4.1%	0.8%
Cohabiting couple households: With children	57	3.1%	2.6%	0.4%
Lone parent households: With dependent children	76	4.1%	3.3%	0.8%
Lone parent households: All children non-dependent	59	3.2%	2.8%	0.3%
Student households	0	0.0%	0.0%	0.0%
Other households: With dependent children	39	2.1%	2.3%	-0.2%
Other households: Other	62	3.3%	3.3%	0.0%

## Council Tax Banding

Source: Valuation list for the authority on 4th Oct 2010

Council tax information can provide an overview of house value within an area, however whilst they provide an overview it should be noted that these bandings were created several years ago. This information is only available at a parish level rather than by ward. The percentage of houses falling in the A-C bands (the lower council tax bands) for Iver Parish is 2.7% higher than the District average.

Parish	Dwelling Count	Bands A-C	Bands D-F	Bands G-H
Iver	4430	20.3%	62.6%	17.1%
South Bucks District	27,628	17.6%	50.8%	31.6%

## House prices

Source: DCLG tables from Land Registry data—2010

The average house price in 2010 in South Bucks based on house sales was £536k over 47% higher than the average for Buckinghamshire. The average for Chiltern was £457,202, Wycombe was £338,294 and Aylesbury Vale was £273,022.

## Acorn Data

Source: Acorn Data 2010, produced by CACI

Acorn Data provides useful data about the characteristics of people based on the postcode in which they live. Using data from a range of sources, every postcode is classified into one of 5 categories, which split down into further groups. This data provides useful information to start to understand the feelings, behaviours and expectations of each group. N.B All category names are already defined on the database.

Area	Wealthy Achievers	Urban Prosperity	Comfortably Off	Moderate Means	Hard Pressed	No Classification
Iver Heath	44.1%	5.1%	34.6%	2.9%	12.5%	0.7%
South Bucks	60.3%	10.9%	21.6%	2.1%	3.8%	1.3%

Looking at the five main categories it shows that Iver Heath has a higher percentage of 'Comfortably off' households than the District average by 13%. It also shows 12.5% fall within the 'Hard Pressed' category, which is 8.7% higher than the District average. The tables below provide a detailed split down into smaller groupings which provide an idea of the type of households within each category.

Category 1 - Wealthy Achievers	Ward %	District %
Wealthy Mature Professionals	0.0%	24.2%
Villages with Wealthy Commuters	14.7%	14.4%
Well Off Managers	10.3%	4.8%
Affluent Greys	0.7%	6.7%
Flourishing Families	18.4%	10.3%

Category 2 - Urban Prosperity	Ward %	District %
Urban Professionals	5.1%	10.9%

Category 3 - Comfortably Off	Ward %	District %
Secure Families	27.2%	13.3%
Settled Suburbia//Prudent Pensioners	7.4%	8.4%

Category 4 - Moderate Means	Ward %	District %
Moderate Means	2.9%	2.1%

Category 5 - Urban Prosperity	Ward %	District %
Hard Pressed	12.5%	3.8%

Unclassified	Ward %	District %
Unclassified	0.7%	1.3%

The main type of grouping within this Ward are 'Secure Families'. Education is important to this group, who have more very young children than average. Households are not economically deprived, or well off, but have fairly average incomes. People's health is generally good, but a slightly larger proportion than average make poor lifestyle choices.

## Employment & Education

### Economically active

Source: CAS028, ONS, Census 2001

Based on information from the 2001 Census 81.4% of the working age population within the Ward are economically active, this is 3.5% higher than the average of 77.9% for the District. The female and male breakdown shows that there is 73.7% of the female working age population who are economically active within Iver Heath which is 5.1% higher than the District average of 68.6%.

	Iver Heath	South Bucks	Great Britain
<b>Economically active (% of working age population)</b>			
All People	81.4%	77.9%	74.0%
Males	89.3%	87.7%	81.4%
Females	73.7%	68.6%	66.8%
<b>Unemployed (% of economically active)</b>			
All People	2.8%	3.0%	5.7%

2.8% of the economically active population are unemployed in Iver Heath which is slightly lower than the District average.

Based on latest estimates the economically active rate for South Bucks is 76.5% and the rate for Great Britain is 76.2% (source: Annual Population Survey Jan - Dec 2010).

### Hours worked

Source: CAS029, ONS, Census 2001

The table opposite shows that 78.9% of the people in employment within the Ward work full-time hours and 21.1% work part-time hours. Looking at the split down by sex, 94.5% of males worked full time and 5.5% worked part time and 61.1% of females worked full time and 38.9% worked part time.

	Iver Heath	South Bucks	Great Britain
<b>Hours worked - for all people in employment</b>			
Full time	78.9%	77.4%	75.9%
Part time	21.1%	22.6%	24.1%

### Employment by Occupation

Source: CAS033, ONS, Census 2001

For the population of Iver Heath the top 3 occupation groups are:

- Managers and Senior Officials who make up 20.1% (South Bucks Average 25.8%)
- Administrative & Secretarial who make up 16.9% (South Bucks Average 14.0%)
- Associate Professional and Technical who make up 15.0% (South Bucks Average 15.4%)

These 3 occupation groups contribute 52% of occupations for the Ward.

### Jobseeker's Allowance (JSA) Claimants

Source: ONS claimant count with rates and proportions, Nomisweb (June 2011)

Within Iver Heath Ward there were 62 people claiming Job Seekers Allowance based on a quarterly snapshot from June 2011. This accounts for 1.9% of the working age population which is higher than the South Bucks average of 1.3% but lower than the Great Britain average of 3.7%.

### Education

Source: CAS032, ONS, Census 2001

Within Iver Heath 19.5% of people aged 16 to 74 have higher level qualifications which is 9.1% lower than the average for South Bucks. 33.4% have no qualifications which is 6.7% higher than the South Bucks average but 2.4% lower than the Great Britain average.

	Iver Heath (numbers)	Iver Heath %	South Bucks %	Great Britain %
No qualifications or level unknown <sup>1</sup>	1097	33.4%	26.7%	35.8%
Lower level qualifications <sup>2</sup>	1546	47.1%	44.6%	43.9%
Higher level qualifications <sup>3</sup>	642	19.5%	28.6%	20.4%

<sup>1</sup> People without any academic, vocational or professional qualification or level unknown

<sup>2</sup> Qualifications equivalent to Level 1 to 3 of the National Key Learning Targets (i.e. GCSE's, O-Levels, A-Levels, NVQ Level 1-3)

<sup>3</sup> Qualifications of Level 4 & above (i.e. first/higher degrees, NVQ Level 4 & 5, HND, HNC & other professional qualifications)

## Travel

### Distance Travelled to Work

Source: Table UV35, ONS, Census 2001

The table below shows the distance travelled to work for all people aged 16 to 74 who were in employment based on information collected in the 2001 Census.

	Iver Heath	South Bucks	South East	England & Wales
Works mainly at or from home	10.6%	13.1%	9.9%	9.2%
Less than 2km	7.3%	12.2%	20.4%	20.0%
2km to less than 5km	20.0%	15.3%	17.6%	20.0%
5km to less than 10km	29.7%	19.5%	15.2%	18.2%
10km to less than 20km	14.4%	16.4%	13.7%	15.2%
20km to less than 40km	10.2%	14.9%	10.3%	7.7%
40km and over	1.9%	3.3%	7.5%	4.9%
No fixed place of work	5.8%	4.9%	5.1%	4.4%
Other	0.1%	0.4%	0.3%	0.3%

Within Iver Heath there were 49.7% of people travelling between 2 and 10km to work which was 14.9% higher than the average for the District. There were fewer people working mainly at or from home than the District average.

### Method of Travel to Work

Source: Table UV39, ONS, Census 2001

The table below shows the method of travel to work for the usual resident population aged 16 to 74 who were in work based on information collected in the 2001 Census.

	Iver Heath	South Bucks	South East	England & Wales
Driving a car or van	72.4%	65.0%	59.2%	55.2%
On foot	3.3%	5.9%	9.9%	10.0%
Works mainly at or from home	10.6%	13.1%	9.9%	9.2%
Bus, minibus or coach	1.9%	1.5%	4.4%	7.4%
Passenger in a car or van	4.6%	4.3%	5.7%	6.3%
Train	1.8%	5.8%	5.6%	4.1%
Underground, metro, light rail or tram	2.3%	1.3%	0.2%	3.0%
Bicycle	1.6%	1.5%	3.1%	2.8%
Motorcycle, scooter or moped	0.6%	0.8%	1.1%	1.1%
Other	0.9%	0.8%	0.9%	1.0%

For Iver Heath 72.4% of the population drove a car or van as the method of travel to work which is 7.4% higher than the average for the District. There were 4.1% who used the train or underground to travel to work which is 3% lower than the District average.

### Car and Van Ownership

Source: Table UV62, ONS, Census 2001

The table below shows that in 2001 that 11.4% of households in Iver Heath did not own a car or van which was slightly higher than the District average. There was a slightly lower percentage of households who owned 2 or more cars or vans, compared to the average for the District.

	Iver Heath	South Bucks	South East	England & Wales
No car or van	11.4%	11.1%	19.4%	26.8%
1 car or van	38.6%	36.0%	42.6%	43.8%
2 cars or vans	37.8%	38.9%	29.6%	23.5%
3 or more cars or vans	12.1%	14.0%	8.4%	5.9%

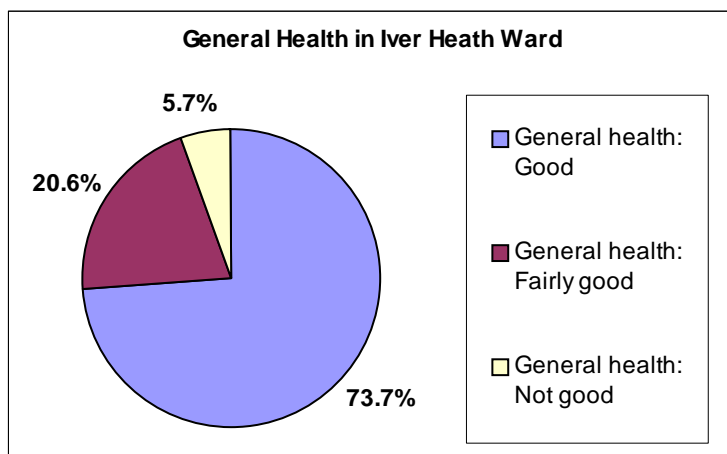
## Health

### General Health & Limiting Long-term Illness

Source: Table KS08, ONS, Census 2001

73.7% of people within Iver Heath declare themselves as having good health, this is 1.6% lower than the average for South Bucks. The Ward percentage is 5.1% higher than the England and Wales average of 68.6% who declared they had good health.

People declaring themselves as having not good general health in the Ward is lower than the average for the District and England and Wales.



In 2001 there was an estimated 12.7% of the population of Iver Heath who had a limiting long-term illness which equates to 579 people, this percentage is slightly lower than the average for South Bucks of 13.1% and lower than the average for England and Wales which is 18.2%.

### Provision of Unpaid Care

Source: Table KS08, ONS, Census 2001

Within the Iver Heath Ward 9.9% of the population provide some form of unpaid care, this equates to 452 people. The split down of this is as follows:

- 75.2% (340 people) were providing 1-19 hours unpaid care a week
- 7.7% (35 people) were providing 20-49 hours unpaid care a week
- 17.0% (77 people) were providing 50 or more hours unpaid care a week

### Disability Living Allowance Claimants

Source: Department of Work and Pensions, August 2010

Disability Living Allowance is payable to people who are disabled and who have personal care needs, mobility needs or both. It consists of two components, the care component for people who need help with personal care and the mobility component for people who need help with getting around.

Within Iver Heath Ward there were 130 people claiming Disability Living Allowance based on figures from August 2010 which accounted for just about 7.9% of the total claimants for South Bucks. The age breakdown of claimants is shown in the table opposite. 65 of the claimants were male and 65 were female.

Claimants Age	Count of Claimants
Claimants Aged Under 16	25
Claimants Aged 16-24	10
Claimants Aged 25-49	20
Claimants Aged 50-59	20
Claimants Aged 60-69	35
Claimants Aged 70 and Over	20

Of the people claiming disability living allowance:

- 10 had a claim duration for less than 12 months,
- 5 had a claim duration for between 1 & 2 years,
- 35 had a claim duration which was between 2 & 5 years
- 80 had a claim duration which was 5 years and over

Incapacity Benefit/Severe Disablement Allowance is a benefit provided to people due to them being incapable of work through illness or disability. This includes Sickness/Invalidity Benefit and Severe Disablement and Incapacity Benefit. Within the Iver Heath Ward there were 65 people claiming this type of benefit, 55 of which were Incapacity Benefit Claimants and 10 of which were severe Disablement Allowance Claimants.

*Data has been rounded to base 5 for all figures in order to protect small counts.*

## Deprivation

Source: *Indices of Multiple Deprivation 2010, CLG.*

The Indices of Multiple Deprivation 2010 (IMD 2010) is a measure of deprivation at the small area level—Lower Super Output Area (LSOA). England is split into 32,482 LSOAs, LSOAs have a minimum population of 1000, and overall average population of 1500, and were ranked to create the IMD. All of the LSOAs in England are ranked, the LSOA ranked 1 by the IMD 2010 is the most deprived and the LSOA ranked 32,482 is the least deprived.

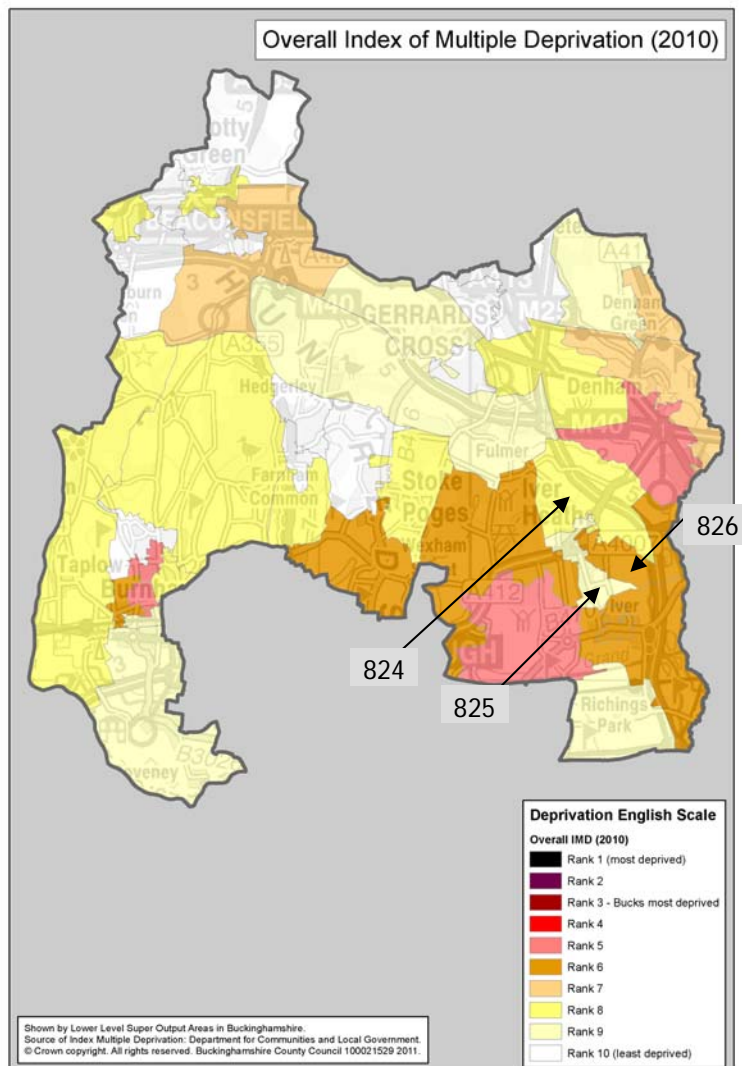
- Iver Heath Ward is made up of 3 LSOAs (824, 825 & 826 –locations shown on the map).

The IMD model is based on 7 distinct dimensions of deprivation which are then given a weighting to work out an overall ranking for deprivation as the table below shows.

Domain	Weighting
Income Deprivation	22.5%
Employment Deprivation	22.5%
Health Deprivation & Disability	13.5%
Education, Skills & Training Deprivation	13.5%
Barriers to Housing and Services	9.3%
Crime & Disorder	9.3%
Living Environment Deprivation	9.3%

### The different domains

- Income Deprivation covers a range of indicators including adults and children in Income Support/ Income-Based JSA/ Pension Credit/ Working Tax Credit or Child Tax Credit households or National Asylum Support Services supported asylum seekers in receipt of subsistence/accommodation support.
- Employment Deprivation measures involuntary exclusion of working age population from the labour market. This includes indicators on recipients of Jobseekers Allowance, Incapacity Benefits, Severe Disablement Allowance, participants in the New Deal for the 18 -24s/25+ who are not in receipt of JSA or participants in the new deal for lone parents.
- Health Deprivation and Disability domain measures rates of poor health, early mortality and disability in an area and covers the entire age range, it includes indicators on years of potential life lost, comparative illness and disability ratio, proportion of adults under 60 suffering from mood or anxiety disorders and measures of acute morbidity.
- Education Skills and Training Deprivation covers two sub-domains: one relating to education deprivation for children/young people in the area, and one relating to lack of skills and qualifications among a sub-set of the working age population.
- Barriers to Housing and Services domain splits into two sub-domains: geographical barriers which looks at road distance to a GP surgery/general stores or supermarket/primary school and to a Post office; wider barriers includes issues relating to access to housing such as affordability and household overcrowding.
- Crime domain measures the rate of recorded crime for four major crime types, representing the risk of personal and material victimisation at a small area level. These include Burglary, Theft, Criminal Damage and Violence.
- Living environment deprivation comprises two sub-domains: the 'indoors' which measures the quality of housing, and the 'outdoors' which contain two measures about air quality and road traffic accidents.



For the overall level of deprivation for Iver Heath SOA 824 falls in the least deprived 22% in England, LSOA 825 falls in the least deprived 17% in England and LSOA 826 falls in the least deprived 41% in England.

For each LSOA within Iver Heath the table below shows the rank out all the LSOAs in England, the deprivation percentage and the rank compared to the other LSOAs in the District for each domain.

Domain	LSOA	Rank out of 32,482 SOAs in England 1 most deprived / 32,482 least deprived	Deprivation % 0 = most deprived 100 = least deprived	Rank out of SOAs in District 1 = lowest rank 40 = highest rank
Overall Deprivation	824	25,570	78.72%	22/40
	825	26,959	83.00%	25/40
	826	19,327	59.50%	10/40
Income Deprivation	824	21,459	66.06%	15/40
	825	28,303	87.13%	26/40
	826	16,801	51.72%	8/40
Employment Deprivation	824	28,599	88.05%	19/40
	825	31,788	97.86%	35/40
	826	22,878	70.43%	6/40
Health Deprivation & Disability	824	30,935	95.24%	20/40
	825	32,110	98.85%	29/40
	826	26,318	81.02%	9/40
Education, Skills & Training Deprivation	824	23,584	72.61%	13/40
	825	24,234	74.61%	14/40
	826	9,372	28.85%	1/40
Barriers to Housing & Services	824	15,156	46.66%	19/40
	825	14,004	43.11%	16/40
	826	22,887	70.46%	30/40
Crime & Disorder	824	13,150	40.48%	30/40
	825	6,890	21.21%	15/40
	826	8,371	25.77%	21/40
Living Environment Deprivation	824	16,454	50.66%	3/40
	825	20,441	62.93%	16/40
	826	22,015	67.78%	21/40

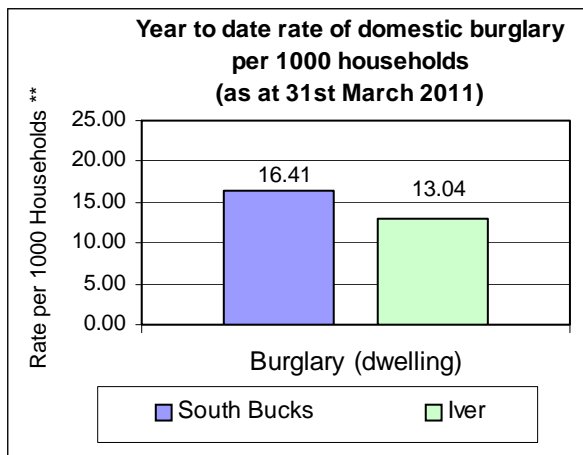
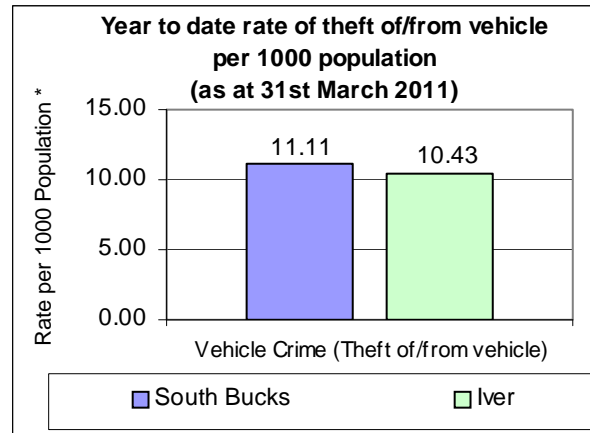
- For Income Deprivation there is clearly a difference between the LSOAs in Iver Heath with one of the LSOAs 826 falling just outside of the lower half of all LSOAs in England. Based on the scoring used to work out this ranking we can say that 11% of people are income deprived in LSOA 826, and looking at a further breakdown for children aged 0-15 12% are living in income deprived households and for older people aged 60 and over there is 21% living in income deprived households.
- For Employment Deprivation LSOA 824 & 825 fall within the least deprived 12% in England and LSOA 826 falls in the least deprived 30% in England but is ranked 6 out of 40. For Education, Skills & Training Deprivation LSOA 826 falls within the most deprived 29% in England and is ranked 1 out of 40 compared to the other areas in the District.
- Two of the LSOAs (824 & 825) fall within the lower half of all LSOAs in England for Barriers to Housing & Services deprivation within the most deprived 47% in England and SOA 826 falls in the least deprived 30% in England for this domain.
- For Crime and Disorder all LSOAs in the Ward fall in the lower half in England for this type of deprivation with LSOA 825 & 826 falling within the most deprived 25% in England.

## Crime

Source: Thames Valley Police Crime Summary for South Bucks District as at 31st March 2011

Information on crime levels is produced at the Police Neighbourhood level rather than by Ward. The information is based on year to date crime summaries produced by Thames Valley Police for the District.

The graph opposite shows that for the Iver police neighbourhood area the rate of theft of or from a vehicle per 1,000 population is just slightly lower than the average for the District. Based on the previous years reporting, vehicle crime decreased by 21.2% for the Iver police neighbourhood area from 146 incidents in 2009/10 to 115 incidents in 2010/11.



The rate of domestic burglary per 1,000 households for Iver police neighbourhood area is lower than the District average. The number of domestic burglaries for the Iver police neighbourhood area has decreased from 96 in 2009/10 to 54 in 2010/11.

\* Population figures to work out the rates per 1000 population are based on the Civil Parish population estimates in South Bucks, mid-2009.

\*\* Household figures to work out the rates per 1000 households are based on the 2001 census data for Parishes and includes new housing completions per parish from 2001-2011. Data inaccuracy may occur due to boundary variations.

The table below shows the number of offences over the last three years for the Beaconsfield police neighbourhood area and the District:

Number of offences	Iver					South Bucks				
	2008/2009	2009/2010	% change	2010/2011	% change	2008/2009	2009/2010	% change	2010/2011	% change
Vehicle Crime Theft of/from vehicle)	222	146	-34.2%	115	-21.2%	1125	1003	-10.8%	740	-26.2%
Burglary (Dwelling)	112	96	-14.3%	54	-43.8%	601	511	-15.0%	432	-15.5%
All Crime	1015	900	-11.3%	714	-20.7%	6323	5809	-8.1%	4843	-16.6%

Crime statistics for the District are produced by Thames Valley Police on a monthly basis and should be used for up to date trend information. There are some differences between the neighbourhood police area figures and the overall South Bucks figures due to different timelines in producing the report and crimes that are reclassified over the reporting period.

When using this Ward Profile please note that information is taken from a variety of sources and SBDC can not vouch for its accuracy & reliability. Many statistics come from the 2001 Census so this should be taken into account when utilising these figures as these are now 10 years old.

Some of the data contained in this profile is protected by various copyrights and cannot be re-used elsewhere without permission of the relevant copyright holder (please refer to source data for more information).