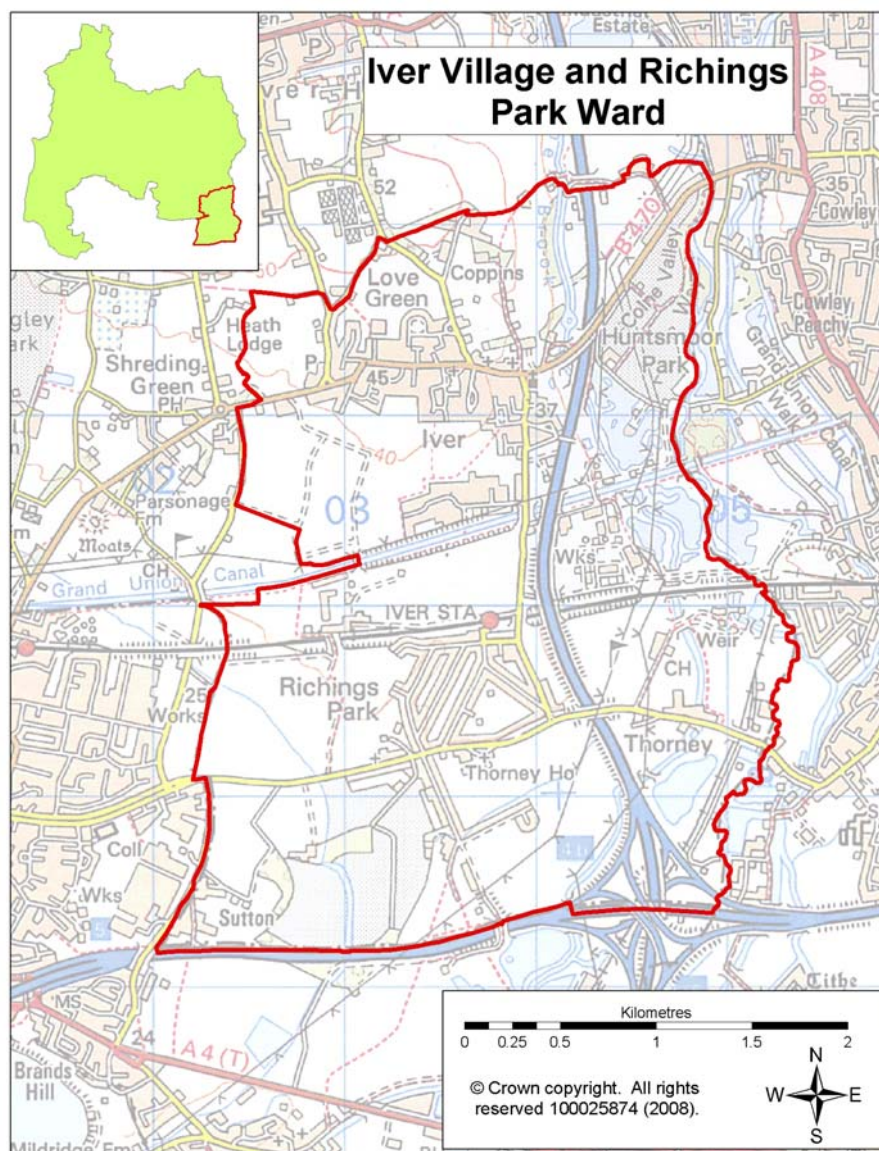


This ward profile aims to provide an overview of information about the Iver Village & Richings Park Ward. The majority of this information is at ward level for Iver Village & Richings Park, except for a small number of statistics which are only available at parish or district level.



Summary of key points:

- 20.2% of the accommodation type for the Ward was terraced housing which is 6.6% higher than the District average. Detached housing for the Ward is 9.2% lower than the District average;
- compared to the District average, Iver Village & Richings Park has a higher percentage of married couple households with children (1.4% higher) and cohabiting couple households with children (1.3% higher);
- based on Acorn Data for Iver Village and Richings Park the main type of grouping is 'Comfortably off' which makes up 44.9% of the Ward's households which is 23.3% higher than the District average;
- for Iver Village & Richings Park 31.6% have no qualifications which is 4.9% higher than the South Bucks average but lower than the Great Britain average;
- within the Ward there were 47.4% of people travelling between 2km to 10km to work which was 12.6% higher than the District average. There were fewer people travelling further distances to work from Iver Village & Richings Park than the District average;
- 70.6% of the population drove a car or van as the method of travel to work which is 5.6% higher than the average for the District;
- based on the 2010 Indices of Deprivation for the Income Deprivation domain there is clearly a difference between the Lower Super Output Areas (LSOAs) in the Ward with one LSOA falling in the least deprived 23% in England, however the other two LSOAs fall lower in the least deprived 46% and least deprived 43%;
- the rate of domestic burglary per 1,000 households for Iver Police Neighbourhood area is lower than the average rate for the District. The number of domestic burglaries for Iver has decreased by 21.2% from 146 incidents in 2009/10 to 115 incidents in 2010/11.

Population

Age structure

Source: Office of National Statistics—mid year population estimates 2009 ward & district level

In 2009 the population of Iver Village & Richings Park Ward was 4,974 with males making up 50.8% of the population and females making up 49.2%. The age breakdown is shown in the table below.

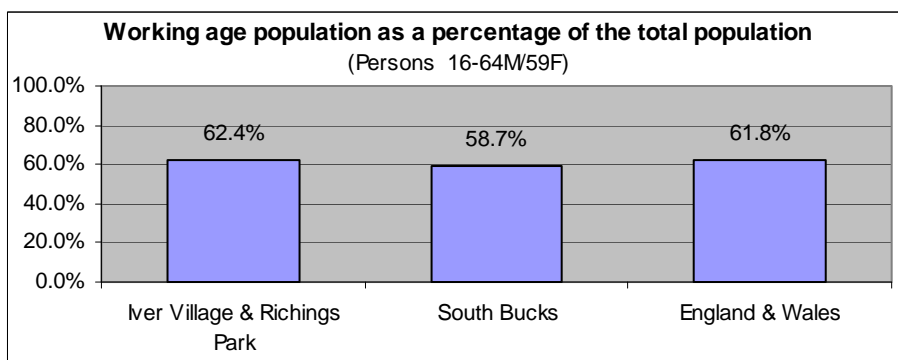
	Total	0-4	5-14	15-19	20-44	45-64	65+
Iver Village and Richings Park	4,974	5.4%	11.1%	6.7%	31.6%	29.0%	16.3%
South Bucks	66,600	5.7%	12.5%	5.7%	29.7%	27.9%	18.3%
England & Wales	-	6.1%	11.3%	6.4%	34.5%	25.3%	16.4%

- There were 1,151 people within the 0-19 age group living within the Ward which contributes 23.1% to the population of the Ward; this is slightly lower than the average of 23.9% for South Bucks.
- The 65 and over age group make up 16.3% of the Ward this is lower than the average of 18.3% for South Bucks and lower than the England & Wales average.
- There was a 3.3% increase in population in the ward from 2005-2009 based on mid year estimates, lower than the average increase for South Bucks of 4.7%.

Working Age Population

Source: Office of National Statistics—2010 Ward Population Estimates, mid-2009 (experimental statistics) - working age

Based on mid-2009 figures the working age population makes up 62.4% of the population of Iver Village & Richings Park, this is 3.7% higher than the average for South Bucks and 0.6% higher than the average for England & Wales.



Population Projections

Source: 2008-based sub national population projections, Office for National Statistics/Bucks Strategic Partnership (BSP) population projections October 2010

National population projections are not available at ward level but based on the latest national population projections South Bucks District is predicted to have a population increase of 25.9% over the next 25 years from 65,700 to 82,700 in 2033. The projections are trend based which means assumptions for future levels of births, deaths and migration are based on observed levels (they do not take into account any future policy changes that have not yet occurred). Within these figures based on projections for the district from 2008 to 2033:

- the 0-19 age group is predicted to rise by 20.1% (England 10.4%);
- the 20-64 age group by 15.5% (England 8.3%); and
- the 65+ age group by 63.9% (England 65.3%).

Local population projections at district and ward level (commissioned by Bucks CC) have been produced which take account of additional datasets including housing provision in the area and other local inputs. These put the population at 67,550 in 2026 (a difference of over 11,000 from the national projections for 2026). The projections cover a different time period and the age group breakdown is different. The significant variances between the projections means caution needs to be applied when using these figures as a realistic figure is more likely to fall somewhere between the two predictions (further information about both sets of projections can be found on KnowledgeSource).

Based on the BSP projections for Iver Village & Richings Park the estimated population is forecasted to decrease from 4,950 in 2009 to 4,700 in 2026 a decrease of 5.1%. Looking at a split down by age group based on projections for the ward from 2009 to 2026:

- the 0-17 age group is predicted to decrease from 1,000 to 850 (-15%)
- 18—retired* age group is predicted to decrease from 2,950 to 2,550 (-13.6%)
- retired* + age group is predicted to rise from 950 to 1,300 (36.9%)

(*retired is 60 for females and 65 for males)

Population Density

Source: Table UV02, ONS, Census 2001

The number of persons per hectare in Iver Village & Richings Park based on the 2001 Census information was 4.89, this is higher than the average of 4.38 for South Bucks and 3.45 for England and Wales.

Ethnicity

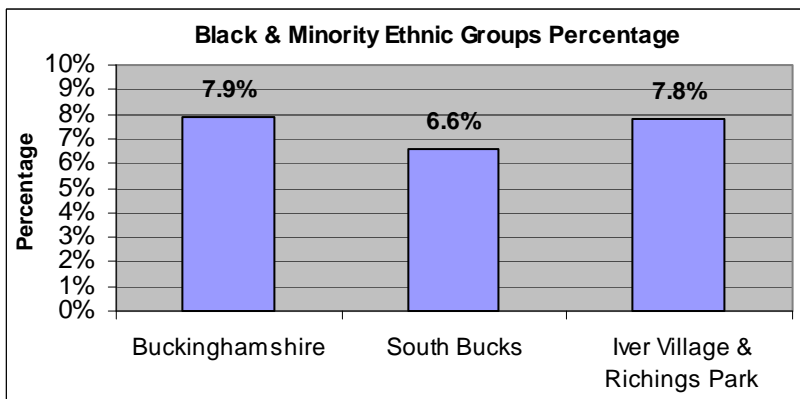
Source: Table KS06 & UV08, Census 2001/ Nomisweb standard tables, ONS.

Resident Population Estimates by Ethnic Group (experimental), 2009, Office for National Statistics.

Based on 2001 Census information 88.5% of the population of Iver Village & Richings Park Ward stated their ethnicity as White British; this is higher than the 86.5% average for South Bucks. 2.0% of the population of the Ward declare their ethnicity as Other-White, lower than the 5.1% average for South Bucks.

There are 7.8% of the population who are from Black & Minority Ethnic (BME) Groups this is higher than the 6.6% average for South Bucks. This is split down into the following BME Groups.

BME mix	Percentage
Mixed	1.2%
Asian or Asian British	5.6%
Black or Black British	0.4%
Chinese or other ethnic group	0.7%



The BME groups tend to be higher in the younger age group as the split below shows:

- For the 0-19 age group 10.9% of the population are from BME Groups (10.2% South Bucks average)
- For the 20-64 age group 7.6% of the population are from BME groups (6.7% South Bucks average)
- For the 65 and over age group 1.7% of the population are from BME groups (1.5% South Bucks average)

Looking at the change from the 1991 to 2001 Census for South Bucks District, 3.3% identified with one of the non-white ethnic categories in 1991 compared to 6.6% in 2001, an increase of 3.3%. Based on experimental population estimates for 2009 13.1% of the population in South Bucks were from a non-white ethnic group.

8.5% of the population of Iver Village & Richings Park were born outside of the UK which is lower than the District average of 12.2%. The Ward population born outside the UK are predominantly from Asia (3.1%) and Africa (1.6%).

Religion

Source: Table KS07, ONS, Census 2001

Based on 2001 Census information 73.9% of the population of Iver Village & Richings Park Ward stated their religion as Christianity; this is lower than the 75.6% average for South Bucks. 12.8% stated that they had no religion which is similar to the average for the District.

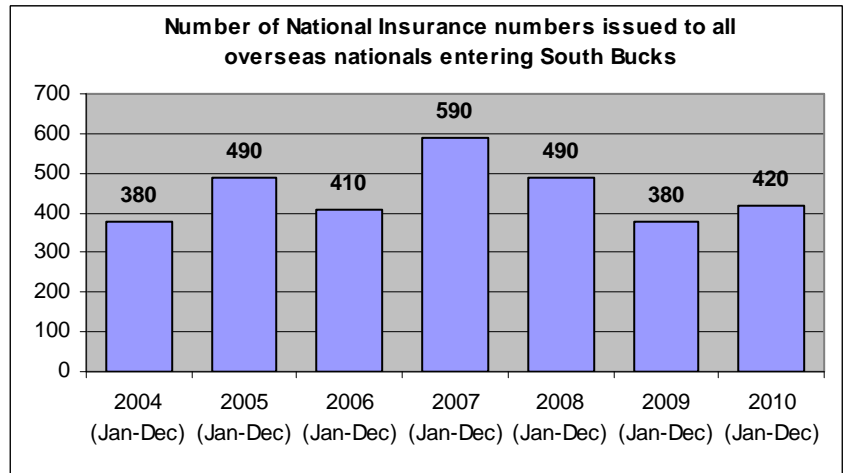
People stating religion as:	Iver Village & Richings Park	South Bucks	England and Wales
Christian	73.9%	75.6%	71.8%
Buddhist	0.2%	0.3%	0.3%
Hindu	1.3%	1.2%	1.1%
Jewish	0.3%	0.5%	0.5%
Muslim	1.4%	1.1%	3.0%
Sikh	2.7%	1.6%	0.6%
Other religions	0.2%	0.3%	0.3%
No religion	12.8%	12.5%	14.8%
Religion not stated	7.3%	6.9%	7.7%

Migrant Workers

Source: DWP 2010, Local Area Migration Indicators table from Office of National Statistics

Overseas nationals obtain a National Insurance (NI) Number before they enter into employment or upon starting work, so registrations data can be a good indication of new arrivals who are economically active. (Some foreign nationals do obtain a NI number but do not take up employment e.g. refugees will need an NI number but will not all be economically active.)

These figures are only available at district level and do not go down to ward level.



The top 6 nationalities for overseas nationals who are issued a National Insurance number entering South Bucks in 2010 were Poland, India, Australia, Germany, Italy and Spain.

Environment

Land Use Statistics

Source: Generalised Land Use Database Statistics 2005, Communities and Local Government (last updated Jan-07)

The following data is taken from experimental statistics from January 2005 from the generalised land use database. The total area of all land types for Iver Village & Richings Park is 967 hectares which makes up 6.8% of the land in the District. The main type of land use is greenspace and makes up 71.4% of the land use for the Ward. Communities and Local Government consider the 2005 figures to be the definitive land use statistics. No further work is planned on the Generalised Land Use Database.

Type of land use	Hectares	% of ward area that land use type makes up	% of district that land use type makes up
Area of Domestic Buildings	15.9	1.6%	1.7%
Area of Non Domestic Buildings	14.1	1.5%	0.8%
Area of Road	48.0	5.0%	4.2%
Area of Path	1.5	0.2%	0.2%
Area of Rail	6.2	0.6%	0.2%
Area of Domestic Gardens	89.8	9.3%	11.2%
Area of Greenspace	690.7	71.4%	77.5%
Area of Water	49.9	5.2%	2.0%
Area of Other Land Uses	51.1	5.3%	2.2%
Area of Unclassified Land	0	0.0%	0.0%

Based on figures from the Council's 2009/10 Annual Monitoring Report for Iver Parish there were:

- 1 conservation areas within Iver Parish and 41 listed buildings

Housing

Household Tenure

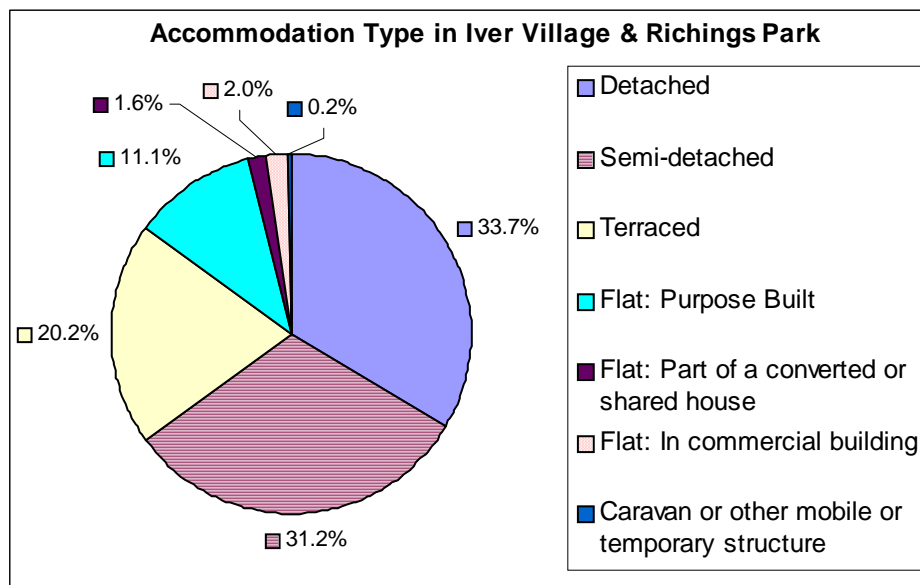
Source: Table KS18, ONS, Census 2001

Within Iver Village & Richings Park there is 78.4% of owner occupied housing which is similar to the District average. There is a slightly higher percentage of socially rented housing which is 1.9% higher than the average for the District.

Household Tenure	Iver Village & Richings Park	South Bucks	England & Wales
Owner Occupied	78.4%	78.0%	68.9%
Social Rented: Council/ Housing Association/ Registered Social Landlord	14.5%	12.6%	19.2%
Private Rented: Private landlord or letting agency	5.0%	6.1%	8.7%
Other	2.2%	3.3%	3.2%

Accommodation Type

Source: Table KS16, ONS, Census 2001



Based on the 2001 Census there were 1,944 households in Iver Village & Richings Park, 94.9% of these were lived in and 5.1% were either vacant or used as a second residence or holiday accommodation.

20.2% of the accommodation type for the Ward was terraced housing which is 6.6% higher than the District average. Detached housing for the Ward is 9.2% lower than the District average.

Household Composition

Source: Table KS20, ONS, Census 2001

The table below shows the household composition in 2001 for Iver Village & Richings Park compared to the average for the District. The main difference to the District average is there is a higher percentage of married couple households with children (1.4% higher) and cohabiting couple households with children (1.3% higher) and a lower percentage of pensioner households (2.8% lower).

⇒ There were 65 lone parent households with dependent children.

Household Composition	Iver Village & Richings Park (Number)	Iver Village & Richings Park (%)	South Bucks District average (%)	Difference
Single non-pensionable households	214	11.6%	11.7%	-0.1%
Single pensioner	252	13.7%	14.3%	-0.6%
All other pensioner households	179	9.7%	11.9%	-2.2%
Married couple households: No children	258	14.0%	14.9%	-0.9%
Married couple households: With children	554	30.0%	28.6%	1.4%
Cohabiting couple households: No children	89	4.8%	4.1%	0.7%
Cohabiting couple households: With children	72	3.9%	2.6%	1.3%
Lone parent households: With dependent children	65	3.5%	3.3%	0.2%
Lone parent households: All children non-dependent	51	2.8%	2.8%	-0.1%
Student households	0	0.0%	0.0%	0.0%
Other households: With dependent children	52	2.8%	2.3%	0.5%
Other households: Other	58	3.1%	3.3%	-0.2%

Council Tax Banding

Source: Valuation list for the authority on 4th Oct 2010

Council tax information can provide an overview of house value within an area, however whilst they provide an overview it should be noted that these bandings were created several years ago. This information is only available at a parish level rather than by ward. The percentage of houses falling in the A-C bands (the lower council tax bands) for Iver Parish is 2.7% higher than the District average.

Parish	Dwelling Count	Bands A-C	Bands D-F	Bands G-H
Iver	4430	20.3%	62.6%	17.1%
South Bucks District	27,628	17.6%	50.8%	31.6%

House prices

Source: DCLG tables from Land Registry data—2010

The average house price in 2010 in South Bucks based on house sales was £536k over 47% higher than the average for Buckinghamshire. The average for Chiltern was £457,202, Wycombe was £338,294 and Aylesbury Vale was £273,022.

Acorn Data

Source: Acorn Data 2010, produced by CACI

Acorn Data provides useful data about the characteristics of people based on the postcode in which they live. Using data from a range of sources, every postcode is classified into one of 5 categories, which split down into further groups. This data provides useful information to start to understand the feelings, behaviours and expectations of each group. N.B All category names are already defined on the database.

Area	Wealthy Achievers	Urban Prosperity	Comfortably Off	Moderate Means	Hard Pressed	No Classification
Iver Village and Richings Park	40.1%	2.4%	44.9%	7.8%	4.2%	0.6%
South Bucks	60.3%	10.9%	21.6%	2.1%	3.8%	1.3%

Looking at the five main categories it shows that Iver Village and Richings Park has a higher percentage of 'Comfortably Off' households than the District average by 23.3%. It also shows that there is a higher percentage of households falling within the 'Moderate Means' or 'Hard Pressed' categories than the District average by 6.1%. The tables below provide a detailed split down into smaller groupings which provide an idea of the type of households within each category.

Category 1 - Wealthy Achievers	Ward %	District %
Wealthy Mature Professionals	7.2%	24.2%
Villages with Wealthy Commuters	0.0%	14.4%
Well Off Managers	4.8%	4.8%
Affluent Greys	2.4%	6.7%
Flourishing Families	25.7%	10.3%

Category 2 - Urban Prosperity	Ward %	District %
Urban Professionals	2.4%	10.9%

Category 3 - Comfortably Off	Ward %	District %
Secure Families	31.7%	13.3%
Settled Suburbia//Prudent Pensioners	13.2%	8.4%

Category 4 - Moderate Means	Ward %	District %
Moderate Means	7.8%	2.1%

Category 5 - Urban Prosperity	Ward %	District %
Hard Pressed	4.2%	3.8%

Unclassified	Ward %	District %
Unclassified	0.6%	1.3%

The main type of grouping is 'Secure Families' which makes up 31.7% of the Ward. Education is important to this group, who have more very young children than average. Households are not economically deprived, or well off, but have fairly average incomes. People's health is generally good, but a slightly larger proportion than average make poor lifestyle choices.

Employment & Education

Economically active

Source: CAS028, ONS, Census 2001

Based on information from the 2001 Census 81.5% of the working age population within the Ward are economically active, this is 3.6% higher than the average of 77.9% for the District. The female and male breakdown shows that there is 73.7% of the female working age population who are economically active within Iver Village & Richings Park which is 5.1% higher than the District average of 68.6%.

	Iver Village & Richings Park	South Bucks	Great Britain
Economically active (% of working age population)			
All People	81.5%	77.9%	74.0%
Males	89.1%	87.7%	81.4%
Females	73.7%	68.6%	66.8%
Unemployed (% of economically active)			
All People	2.6%	3.0%	5.7%

2.6% of the economically active population are unemployed in Iver Village & Richings Park which is 0.4% lower than the District average.

Based on latest estimates the economically active rate for South Bucks is 76.5% and the rate for Great Britain is 76.2% (source: Annual Population Survey Jan - Dec 2010).

Hours worked

Source: CAS029, ONS, Census 2001

The table opposite shows that 78.2% of the people in employment within the Ward work full-time hours and 21.8% work part-time hours. Looking at the split down by sex, 92.1% of males worked full time and 7.9% worked part time and 61.2% of females worked full time and 38.8% worked part time.

	Iver Village & Richings Park	South Bucks	Great Britain
Hours worked - for all people in employment			
Full time	78.2%	77.4%	75.9%
Part time	21.8%	22.6%	24.1%

Employment by Occupation

Source: CAS033, ONS, Census 2001

For the population of Iver Village & Richings Park the top 3 occupation groups are:

- Managers and Senior Officials who make up 21.4% (South Bucks Average 25.8%)
- Administrative & Secretarial who make up 16.3% (South Bucks Average 14.0%)
- Associate Professional and Technical who make up 14.9% (South Bucks Average. 15.4%)

These 3 occupation groups contribute 52.6% of occupations for the Ward.

Jobseeker's Allowance (JSA) Claimants

Source: ONS claimant count with rates and proportions, Nomisweb (June 2011)

Within Iver Village & Richings Park Ward there were 55 people claiming Job Seekers Allowance based on a quarterly snapshot from June 2011. This accounts for 1.7% of the working age population which is higher than the South Bucks average of 1.3% but lower than the Great Britain average of 3.7%.

Education

Source: CAS032, ONS, Census 2001

Within Iver Village & Richings Park 22.2% of people aged 16 to 74 have higher level qualifications which is 6.4% lower than the average for South Bucks. 31.6% have no qualifications which is 4.9% higher than the South Bucks average but lower than the Great Britain average.

	Iver Village & Richings Park (numbers)	Iver Village & Richings Park %	South Bucks %	Great Britain %
No qualifications or level unknown ¹	1076	31.6%	26.7%	35.8%
Lower level qualifications ²	1571	46.2%	44.6%	43.9%
Higher level qualifications ³	755	22.2%	28.6%	20.4%

¹ People without any academic, vocational or professional qualification or level unknown

² Qualifications equivalent to Level 1 to 3 of the National Key Learning Targets (i.e. GCSE's, O-Levels, A-Levels, NVQ Level 1-3)

³ Qualifications of Level 4 & above (i.e. first/higher degrees, NVQ Level 4 & 5, HND, HNC & other professional qualifications)

Travel

Distance Travelled to Work

Source: Table UV35, ONS, Census 2001

The table below shows the distance travelled to work for all people aged 16 to 74 who were in employment based on information collected in the 2001 Census.

	Iver Village & Richings Park	South Bucks	South East	England & Wales
Works mainly at or from home	10.3%	13.1%	9.9%	9.2%
Less than 2km	9.4%	12.2%	20.4%	20.0%
2km to less than 5km	21.0%	15.3%	17.6%	20.0%
5km to less than 10km	26.4%	19.5%	15.2%	18.2%
10km to less than 20km	13.5%	16.4%	13.7%	15.2%
20km to less than 40km	10.8%	14.9%	10.3%	7.7%
40km and over	2.6%	3.3%	7.5%	4.9%
No fixed place of work	5.6%	4.9%	5.1%	4.4%
Other	0.3%	0.4%	0.3%	0.3%

Within Iver Village & Richings Park there were 47.4% of people travelling between 2km to 10km to work which was 12.6% higher than the District average. There were fewer people travelling further distances to work from this Ward than the District average.

Method of Travel to Work

Source: Table UV39, ONS, Census 2001

The table below shows the method of travel to work for the usual resident population aged 16 to 74 who were in work based on information collected in the 2001 Census.

	Iver Village & Richings Park	South Bucks	South East	England & Wales
Driving a car or van	70.6%	65.0%	59.2%	55.2%
On foot	4.3%	5.9%	9.9%	10.0%
Works mainly at or from home	10.3%	13.1%	9.9%	9.2%
Bus, minibus or coach	1.4%	1.5%	4.4%	7.4%
Passenger in a car or van	4.7%	4.3%	5.7%	6.3%
Train	4.5%	5.8%	5.6%	4.1%
Underground, metro, light rail or tram	1.1%	1.3%	0.2%	3.0%
Bicycle	1.6%	1.5%	3.1%	2.8%
Motorcycle, scooter or moped	0.7%	0.8%	1.1%	1.1%
Other	0.7%	0.8%	0.9%	1.0%

For Iver Village & Richings Park 70.6% of the population drove a car or van as the method of travel to work which is 5.6% higher than the average for the District.

Car and Van Ownership

Source: Table UV62, ONS, Census 2001

The table below shows that in 2001 that 12.8% of households in Iver Village & Richings Park did not own a car or van which was slightly higher than the average for the District.

	Iver Village & Richings Park	South Bucks	South East	England & Wales
No car or van	12.8%	11.1%	19.4%	26.8%
1 car or van	33.9%	36.0%	42.6%	43.8%
2 cars or vans	39.7%	38.9%	29.6%	23.5%
3 or more cars or vans	13.6%	14.0%	8.4%	5.9%

Health

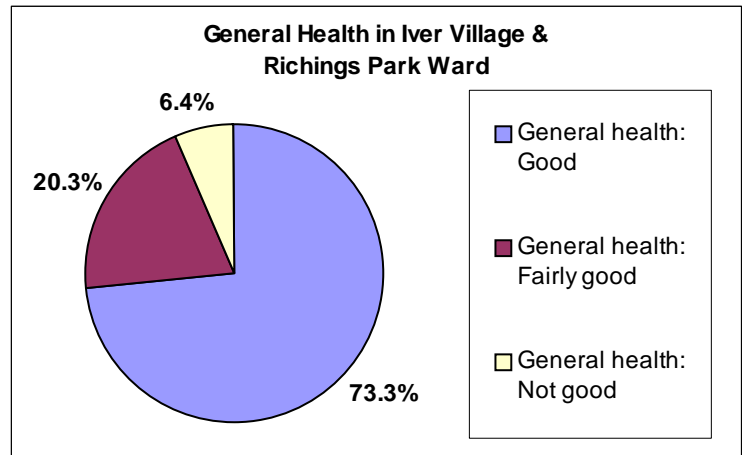
General Health & Limiting Long-term Illness

Source: Table KS08, ONS, Census 2001

73.3% of people within Iver Village & Richings Park declare themselves as having good health, this is 2% lower than the average for South Bucks. The Ward percentage is 4.7% higher than the England and Wales average of 68.6% who declared they had good health.

People declaring themselves as having not good general health in the Ward is higher than the average for the District but lower than the England and Wales average.

In 2001 there was an estimated 13.8% of the population of Iver Village & Richings Park who had a limiting long-term illness which equates to 643 people, this percentage is slightly higher than the average for South Bucks of 13.1% but lower than the average for England and Wales which is 18.2%.



Provision of Unpaid Care

Source: Table KS08, ONS, Census 2001

Within the Iver Village & Richings Park Ward 10.9% of the population provide some form of unpaid care, this equates to 509 people. The split down of this is as follows:

- 79.4% (404 people) were providing 1-19 hours unpaid care a week
- 7.5% (38 people) were providing 20-49 hours unpaid care a week
- 13.2% (67 people) were providing 50 or more hours unpaid care a week

Disability Living Allowance Claimants

Source: Department of Work and Pensions, August 2010

Disability Living Allowance is payable to people who are disabled and who have personal care needs, mobility needs or both. It consists of two components, the care component for people who need help with personal care and the mobility component for people who need help with getting around.

Within Iver Village & Richings Park Ward there were 170 people claiming Disability Living Allowance based on figures from August 2010 which accounted for just under 9% of the total claimants for South Bucks. The age breakdown of claimants is shown in the table opposite. 75 of the claimants were male and 95 were female.

Of the people claiming disability living allowance:

- 25 had a claim duration for less than 12 months,
- 10 had a claim duration for between 1 & 2 years,
- 30 had a claim duration which was between 2 & 5 years
- 105 had a claim duration which was 5 years and over

Claimants Age	Count of Claimants
Claimants Aged Under 16	25
Claimants Aged 16-24	15
Claimants Aged 25-49	30
Claimants Aged 50-59	30
Claimants Aged 60-69	45
Claimants Aged 70 and Over	25

Incapacity Benefit/Severe Disablement Allowance is a benefit provided to people due to them being incapable of work through illness or disability. This includes Sickness/Invalidity Benefit and Severe Disablement and Incapacity Benefit. Within the Iver Village & Richings Park Ward there were 85 people claiming this type of benefit, 75 of which were Incapacity Benefit Claimants and 10 of which were severe Disablement Allowance Claimants.

Data has been rounded to base 5 for all figures in order to protect small counts.

Deprivation

Source: *Indices of Multiple Deprivation 2010, CLG.*

The Indices of Multiple Deprivation 2010 (IMD 2010) is a measure of deprivation at the small area level—Lower Super Output Area (LSOA). England is split into 32,482 LSOAs, LSOAs have a minimum population of 1000, and overall average population of 1500, and were ranked to create the IMD. All of the LSOAs in England are ranked, the LSOA ranked 1 by the IMD 2010 is the most deprived and the LSOA ranked 32,482 is the least deprived.

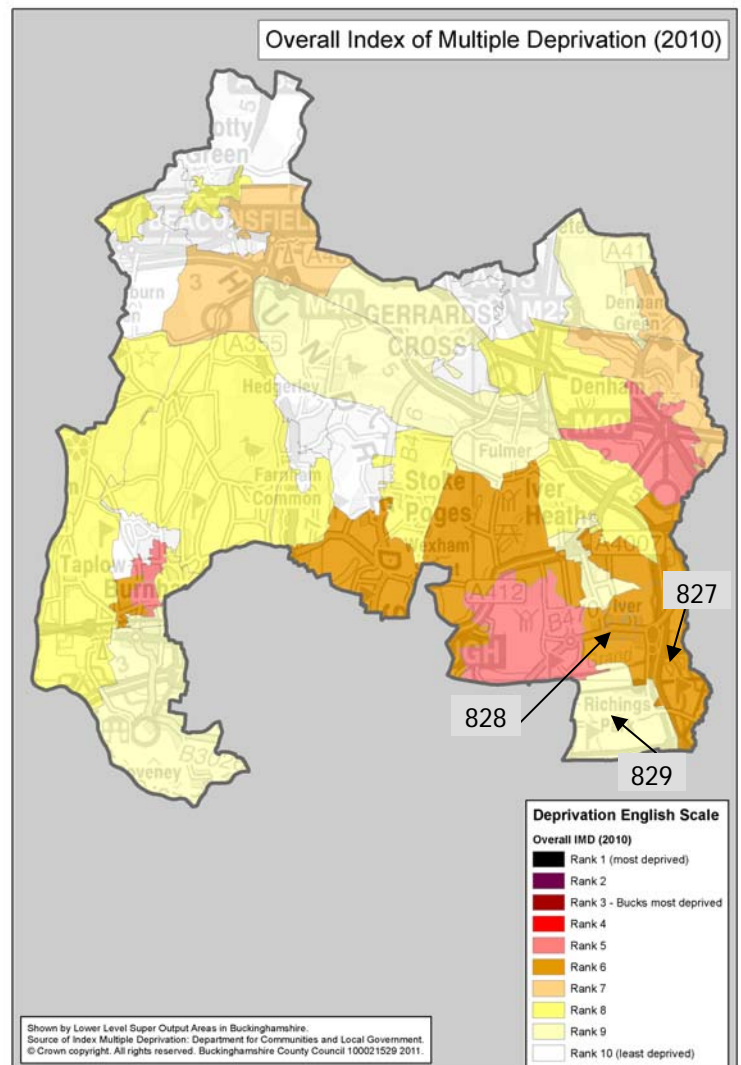
- Iver Village & Richings Park Ward is made up of 3 LSOAs (827, 828 & 829 –locations shown on the map).

The IMD model is based on 7 distinct dimensions of deprivation which are then given a weighting to work out an overall ranking for deprivation as the table below shows.

Domain	Weighting
Income Deprivation	22.5%
Employment Deprivation	22.5%
Health Deprivation & Disability	13.5%
Education, Skills & Training Deprivation	13.5%
Barriers to Housing and Services	9.3%
Crime & Disorder	9.3%
Living Environment Deprivation	9.3%

The different domains

- Income Deprivation covers a range of indicators including adults and children in Income Support/ Income-Based JSA/ Pension Credit/ certain child tax credit families and Asylum seekers receiving subsistence/accommodation support.
- Employment Deprivation measures involuntary exclusion of working age population from the labour market. This includes indicators on recipients of Jobseekers Allowance, Incapacity Benefits, Severe Disablement Allowance, claimants of employment and support allowance, participants in the New Deal for under 25s, over 25s and new parents.
- Health Deprivation and Disability domain measures rates of poor health, early mortality and disability in an area and covers the entire age range, it includes indicators on years of potential life lost, comparative illness and disability ratio, proportion of adults under 60 suffering from mood or anxiety disorders and measures of acute morbidity.
- Education Skills and Training Deprivation covers two sub-domains: one relating to education deprivation for children/young people in the area, and one relating to lack of skills and qualifications among a sub-set of the working age population.
- Barriers to Housing and Services domain splits into two sub-domains: geographical barriers which looks at road distance to a GP surgery/general stores or supermarket/primary school and to a Post office; wider barriers includes issues relating to access to housing such as affordability and household overcrowding.
- Crime domain measures the rate of recorded crime for four major crime types, representing the risk of personal and material victimisation at a small area level. These include Burglary, Theft, Criminal Damage and Violence.
- Living environment deprivation comprises two sub-domains: the 'indoors' which measures the quality of housing (housing in poor condition and without central heating), and the 'outdoors' which contains two measures about air quality and road traffic accidents.



For the overall level of deprivation one of the LSOAs in Iver Village & Richings Park (829) falls within the least deprived 13% in England, the other two LSOAs (827 & 828) fall within the least deprived 46% in England.

For each LSOA within Iver Village & Richings Park the table below shows the rank out all the LSOAs in England, the deprivation percentage and the rank compared to the other LSOAs in the District for each domain.

Domain	LSOA	Rank out of 32,482 LSOAs in England 1 most deprived / 32,482 least deprived	Deprivation % 0 = most deprived 100 = least deprived	Rank out of LSOAs in District 1 = lowest rank 40= highest rank
Overall Deprivation	827	17,661	54.37%	5/40
	828	18,588	57.23%	9/40
	829	28,491	87.71%	29/40
Income Deprivation	827	17,806	54.82%	10/40
	828	15,413	47.45%	6/40
	829	28,597	88.04%	27/40
Employment Deprivation	827	23,616	72.70%	9/40
	828	24,114	74.24%	11/40
	829	31,431	96.76%	32/40
Health Deprivation & Disability	827	25,808	79.45%	5/40
	828	16,989	52.30%	1/40
	829	32,252	99.29%	34/40
Education, Skills & Training Deprivation	827	15,201	46.80%	5/40
	828	12,192	37.53%	4/40
	829	29,352	90.36%	28/40
Barriers to Housing & Services	827	12,573	38.71%	14/40
	828	26,749	82.35%	38/40
	829	11,903	36.64%	13/40
Crime & Disorder	827	4,247	13.07%	7/40
	828	7,455	22.95%	17/40
	829	12,464	38.37%	27/40
Living Environment Deprivation	827	13,843	42.62%	2/40
	828	21,058	64.83%	18/40
	829	18,600	57.26%	8/40

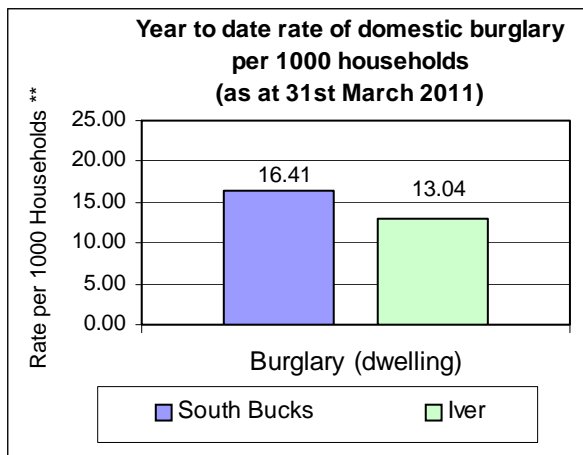
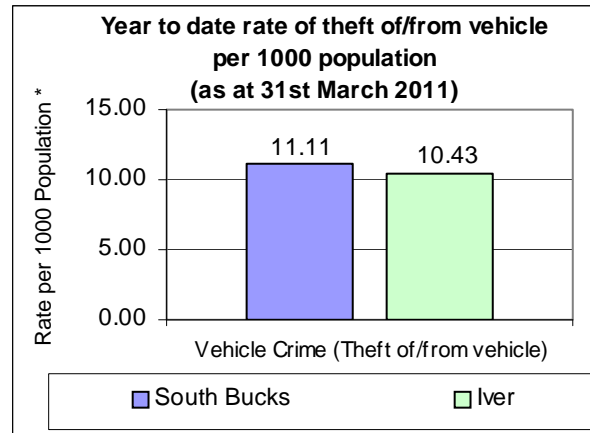
- For Income Deprivation there is clearly a difference between the LSOAs in Iver Village & Richings Park with LSOA 829 falling in the least deprived 12% in England, however LSOA 827 falls in the least deprived 46% in England and LSOA 828 falls in the most deprived 48% in England. Based on the scoring used to work out this ranking we can say that 12% of people are income deprived in LSOA 828, and looking at a further breakdown for children aged 0-15 there are 18% living in income deprived households and for older people aged 60 and over there are 17% living in income deprived households.
- For Health Deprivation & Disability, one of the LSOAs (829) falls within the least deprived 1% in England, LSOA 828 is more deprived in comparison and falls just outside the lower half of all areas in England and is ranked 1 out of 40 when compared to the other areas in the District.
- For Education, Skills & Training Deprivation LSOA 829 falls in the least deprived 10% in England, however the other two LSOAs are more deprived both falling in the lower half of all areas in England for this type of deprivation and ranked 4 and 5 out of 40 when compared to other areas in the District.
- For Crime and Disorder all LSOAs fall in the lower half of all LSOAs in England with LSOA 827 falling in the most deprived 14%.
- For the Living Environment Deprivation LSOA 827 falls within the most deprived 43% in England, and ranks 2 out of 40 when compared to the other LSOAs in the District.

Crime

Source: Thames Valley Police Crime Summary for South Bucks District as at 31st March 2011

Information on crime levels is produced at the Police Neighbourhood level rather than by Ward. The information is based on year to date crime summaries produced by Thames Valley Police for the District.

The graph opposite shows that for the Iver police neighbourhood area the rate of theft of or from a vehicle per 1,000 population is just slightly lower than the average for the District. Based on the previous years reporting, vehicle crime decreased by 21.2% for the Iver police neighbourhood area from 146 incidents in 2009/10 to 115 incidents in 2010/11.



The rate of domestic burglary per 1,000 households for Iver police neighbourhood area is lower than the District average. The number of domestic burglaries for the Iver police neighbourhood area has decreased from 96 in 2009/10 to 54 in 2010/11.

* Population figures to work out the rates per 1000 population are based on the Civil Parish population estimates in South Bucks, mid-2009.

** Household figures to work out the rates per 1000 households are based on the 2001 census data for Parishes and includes new housing completions per parish from 2001-2011. Data inaccuracy may occur due to boundary variations.

The table below shows the number of offences over the last three years for the Beaconsfield police neighbourhood area and the District:

Number of offences	Iver					South Bucks				
	2008/2009	2009/2010	% change	2010/2011	% change	2008/2009	2009/2010	% change	2010/2011	% change
Vehicle Crime Theft of/from vehicle)	222	146	-34.2%	115	-21.2%	1125	1003	-10.8%	740	-26.2%
Burglary (Dwelling)	112	96	-14.3%	54	-43.8%	601	511	-15.0%	432	-15.5%
All Crime	1015	900	-11.3%	714	-20.7%	6323	5809	-8.1%	4843	-16.6%

Crime statistics for the District are produced by Thames Valley Police on a monthly basis and should be used for up to date trend information. There are some differences between the neighbourhood police area figures and the overall South Bucks figures due to different timelines in producing the report and crimes that are reclassified over the reporting period.

When using this Ward Profile please note that information is taken from a variety of sources and SBDC can not vouch for its accuracy & reliability. Many statistics come from the 2001 Census so this should be taken into account when utilising these figures as these are now 10 years old.

Some of the data contained in this profile is protected by various copyrights and cannot be re-used elsewhere without permission of the relevant copyright holder (please refer to source data for more information).