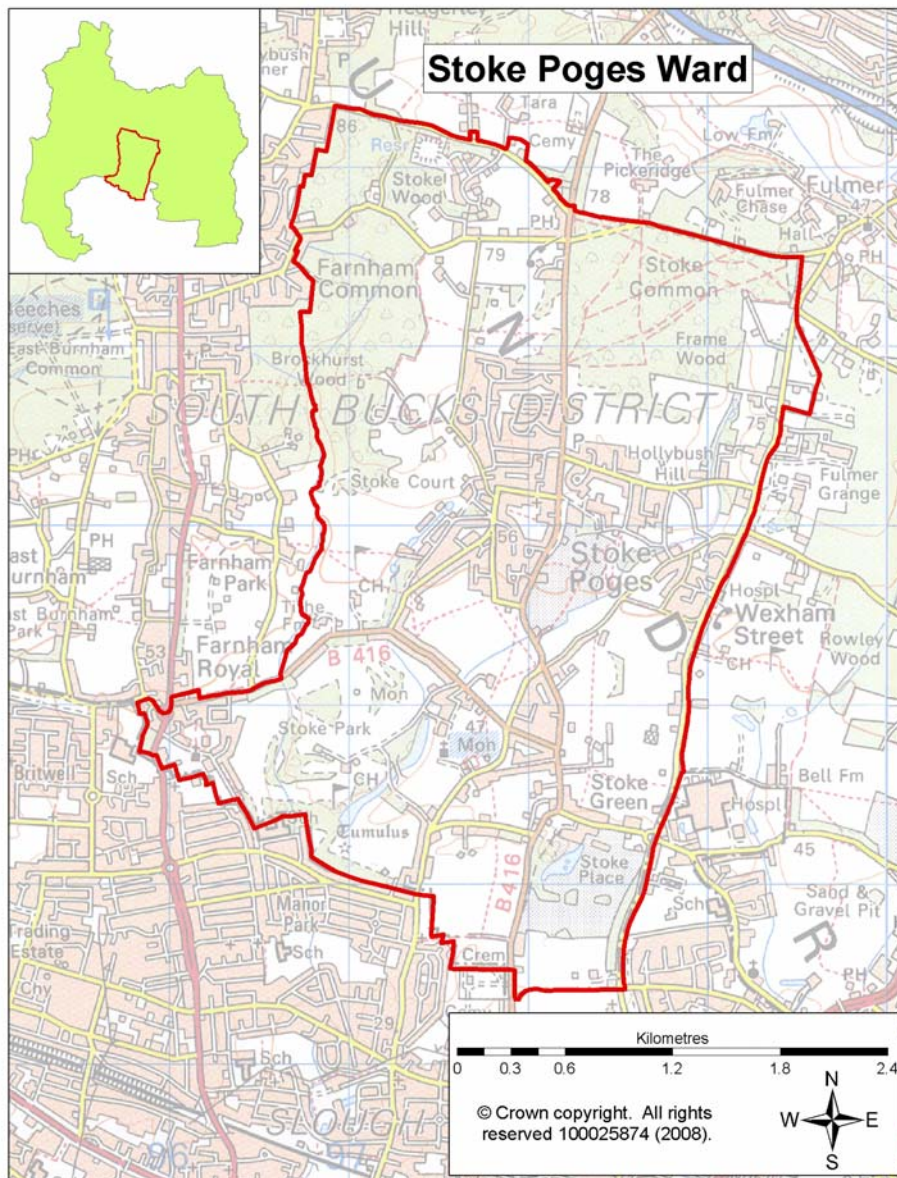


This ward profile aims to provide an overview of information about the Stoke Poges Ward. The majority of this information is at ward level for Stoke Poges, except for a small number of statistics which are only available at parish or district level.



Summary of key points:

- the 65 and over age group make up 19.6% of the Ward this is slightly higher than the average of 18.3% for South Bucks. Based on BSP population projections for this ward the retired+ (60 for females and 65 for males) is due predicted to increase by 12.5% from 2009 to 2026;
- within Stoke Poges there is a high percentage of owner occupied housing which makes up 80.5% of the household tenure within the Ward, this is 2.5% higher than the average for South Bucks and is 11.6% higher than the England average;
- for Stoke Poges there is a higher percentage of pensioner households (4% higher) and a lower percentage of single non-pensionable households (2.6% lower) compared to the District average;
- based on Acorn Categories Stoke Poges has 70.7% of 'Wealthy Achiever' households which is higher than the District average by 10.4%;
- based on the 2010 Indices of Deprivation there is clearly a difference between the Lower Super Output Areas (LSOAs) for the overall level of deprivation. One of the LSOAs in Stoke Poges falls in the least deprived 2% in England. The other two SOAs in the Ward have higher levels of deprivation with one falling in the least deprived 44% in England;
- the rate of vehicle crime for the Stoke Poges/Wexham Police neighbour areas is lower than the average for South Bucks, however the rate of domestic burglary per 1,000 households is higher.

Population

Age structure

Source: Office of National Statistics—mid year population estimates 2009 ward & district level

In 2009 the population of Stoke Poges Ward was 5,044 with males making up 48.9% of the population and females making up 51.1%. The age breakdown of the Ward's population is shown in the table below.

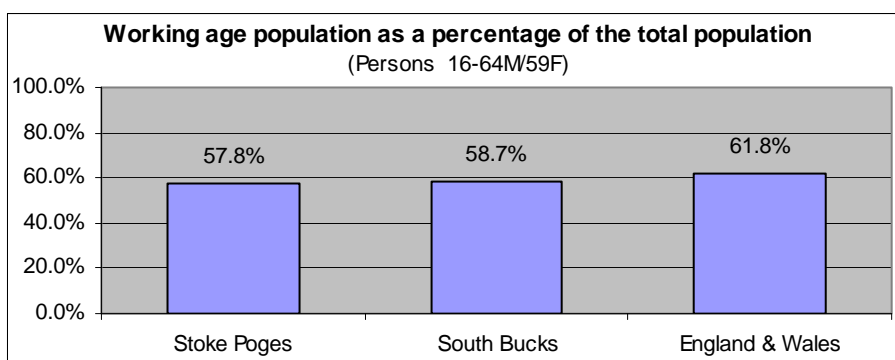
	Total	0-4	5-14	15-19	20-44	45-64	65+
Stoke Poges	5,044	5.8%	11.2%	6.0%	28.8%	28.5%	19.6%
South Bucks	66,600	5.7%	12.5%	5.7%	29.7%	27.9%	18.3%
England & Wales	-	6.1%	11.3%	6.4%	34.5%	25.3%	16.4%

- There were 1,163 people within the 0-19 age group living within the Ward which contributes 23.1% to the population of Stoke Poges; this is slightly lower than the average of 23.9% for South Bucks.
- The 65 and over age group make up 19.6% of the Ward this is 1.3% higher than the average of 18.3% for South Bucks and 3.2% higher than the England & Wales average.
- There was a 2.9% increase in population in the ward from 2005-2009 based on mid year estimates, lower than the average increase for South Bucks of 4.7%.

Working Age Population

Source: Office of National Statistics—2010 Ward Population Estimates, mid-2009 (experimental statistics) - working age

Based on mid-2009 figures the working age population makes up 57.8% of the population of Stoke Poges, this is 0.9% lower than the average for South Bucks and 4.0% lower than the average for England & Wales.



Population Projections

Source: 2008-based sub national population projections, Office for National Statistics/Bucks Strategic Partnership (BSP) population projections October 2010

National population projections are not available at ward level but based on the latest national population projections South Bucks District is predicted to have a population increase of 25.9% over the next 25 years from 65,700 to 82,700 in 2033. The projections are trend based which means assumptions for future levels of births, deaths and migration are based on observed levels (they do not take into account any future policy changes that have not yet occurred). Within these figures based on projections for the district from 2008 to 2033:

- the 0-19 age group is predicted to rise by 20.1% (England 10.4%);
- the 20-64 age group by 15.5% (England 8.3%); and
- the 65+ age group by 63.9% (England 65.3%).

Local population projections at district and ward level (commissioned by Bucks CC) have been produced which take account of additional datasets including housing provision in the area and other local inputs. These put the population at 67,550 in 2026 (a difference of over 11,000 from the national projections for 2026). The projections cover a different time period and the age group breakdown is different. The significant variances between the projections means caution needs to be applied when using these figures as a realistic figure is more likely to fall somewhere between the two predictions (further information about both sets of projections can be found on KnowledgeSource).

Based on the BSP projections for Stoke Poges the estimated population is forecasted to rise from 4,900 in 2009 to 4,950 in 2026 an increase of 1%. Looking at a split down by age group based on projections for the ward from 2009 to 2026:

- the 0-17 age group is predicted to decrease from 1,000 to 950 (-5%)
- 18—retired* age group is predicted to decrease from 2,700 to 2,600(-3.7%)
- retired* + age group is predicted to rise from 1,200 to 1,350 (12.5%)

(*retired is 60 for females and 65 for males)

Population Density

Source: Table UV02, ONS, Census 2001

The number of persons per hectare in Stoke Poges based on the 2001 Census information was 4.6, this is slightly higher than the average of 4.38 for South Bucks and 3.45 for England and Wales.

Ethnicity

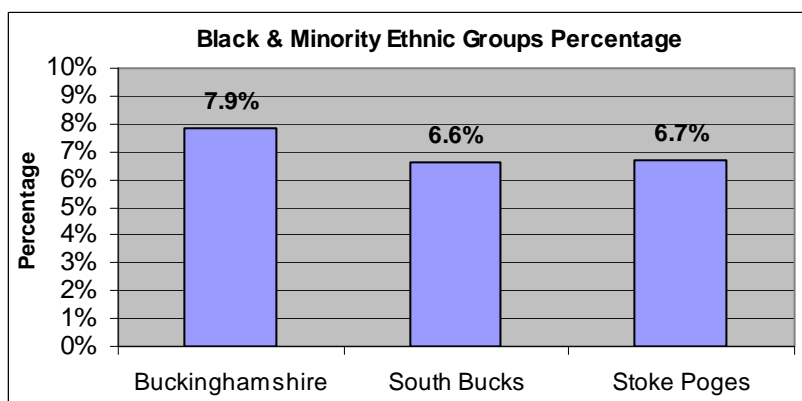
Source: Table KS06 & UV08, Census 2001/ Nomisweb standard tables, ONS.

Resident Population Estimates by Ethnic Group (experimental), 2009, Office for National Statistics.

Based on 2001 Census information 86.5% of the population of Stoke Poges Ward stated their ethnicity as White British; this is the same as the average for South Bucks. 4.8% of the population of the Ward declare their ethnicity as Other-White, slightly lower than the 5.1% average for South Bucks.

There are 6.7% of the population who are from Black & Minority Ethnic (BME) Groups this is similar to the 6.6% average for South Bucks. This is split down into the following BME Groups.

BME mix	Percentage
Mixed	1.2%
Asian or Asian British	4.5%
Black or Black British	0.3%
Chinese or other ethnic group	0.6%



The BME groups tend to be higher in the younger age group as the split below shows:

- For the 0-19 age group 10.6% of the population are from BME Groups (10.2% South Bucks average)
- For the 20-64 age group 6.6% of the population are from BME groups (6.7% South Bucks average)
- For the 65 and over age group 1.5% of the population are from BME groups (1.5% South Bucks average)

Looking at the change from the 1991 to 2001 Census for South Bucks District, 3.3% identified with one of the non-white ethnic categories in 1991 compared to 6.6% in 2001, an increase of 3.3%. Based on experimental population estimates for 2009 13.1% of the population in South Bucks were from a non-white ethnic group.

11.9% of the population of Stoke Poges were born outside of the UK which is slightly lower than the District average of 12.2%. The Ward population born outside the UK are predominantly from Asia (3.1%), other Western European countries (2.5%), North America (1.7%) and Republic of Ireland (1.6%).

Religion

Source: Table KS07, ONS, Census 2001

Based on 2001 Census information 76.5% of the population of Stoke Poges Ward stated their religion as Christianity; this is slightly higher than the 75.6% average for South Bucks. 10.6% stated that they had no religion which is 1.9% lower than the average for the District.

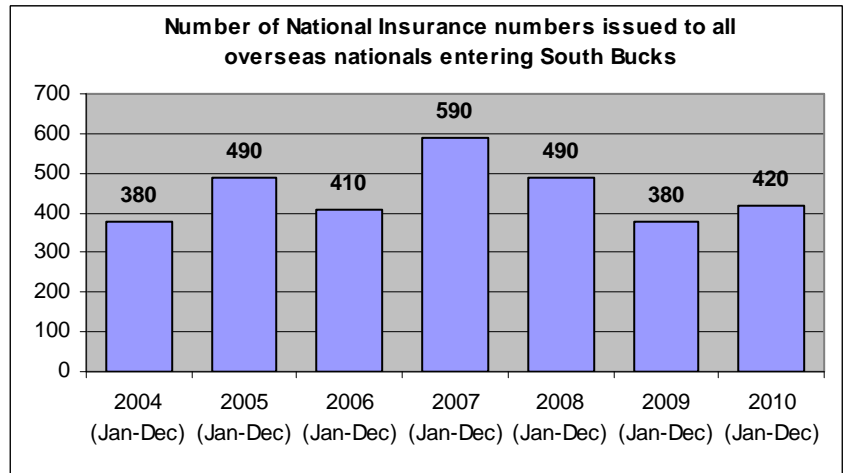
People stating religion as:	Stoke Poges	South Bucks	England and Wales
Christian	76.5%	75.6%	71.8%
Buddhist	0.2%	0.3%	0.3%
Hindu	0.7%	1.2%	1.1%
Jewish	0.5%	0.5%	0.5%
Muslim	1.1%	1.1%	3.0%
Sikh	2.7%	1.6%	0.6%
Other religions	0.2%	0.3%	0.3%
No religion	10.6%	12.5%	14.8%
Religion not stated	7.6%	6.9%	7.7%

Migrant Workers

Source: DWP 2010, Local Area Migration Indicators table from Office of National Statistics

Overseas nationals obtain a National Insurance (NI) Number before they enter into employment or upon starting work, so registrations data can be a good indication of new arrivals who are economically active. (Some foreign nationals do obtain a NI number but do not take up employment e.g. refugees will need an NI number but will not all be economically active.)

These figures are only available at district level and do not go down to ward level.



The top 6 nationalities for overseas nationals who are issued a National Insurance number entering South Bucks in 2010 were Poland, India, Australia, Germany, Italy and Spain.

Environment

Land Use Statistics

Source: Generalised Land Use Database Statistics 2005, Communities and Local Government (last updated Jan-07)

The following data is taken from experimental statistics from January 2005 from the generalised land use database. The total area of all land types for Stoke Poges is 1056 hectares which makes up 7.5% of the land in the District. The main type of land use is greenspace and makes up 76.4% of the land use for the Ward. Communities and Local Government consider the 2005 figures to be the definitive land use statistics. No further work is planned on the Generalised Land Use Database.

Type of land use	Hectares	% of ward area that land use type makes up	% of district that land use type makes up
Area of Domestic Buildings	19.2	1.8%	1.7%
Area of Non Domestic Buildings	6.4	0.6%	0.8%
Area of Road	42.3	4.0%	4.2%
Area of Path	3.0	0.3%	0.2%
Area of Rail	0.0	0.0%	0.2%
Area of Domestic Gardens	151.3	14.3%	11.2%
Area of Greenspace	807.1	76.4%	77.5%
Area of Water	7.8	0.7%	2.0%
Area of Other Land Uses	19.3	1.8%	2.2%
Area of Unclassified Land	0	0.0%	0.0%

Based on figures from the Council's 2009/10 Annual Monitoring Report for Stoke Poges Parish there were:

- 2 conservation areas within Stoke Poges Parish and 44 listed buildings

Housing

Household Tenure

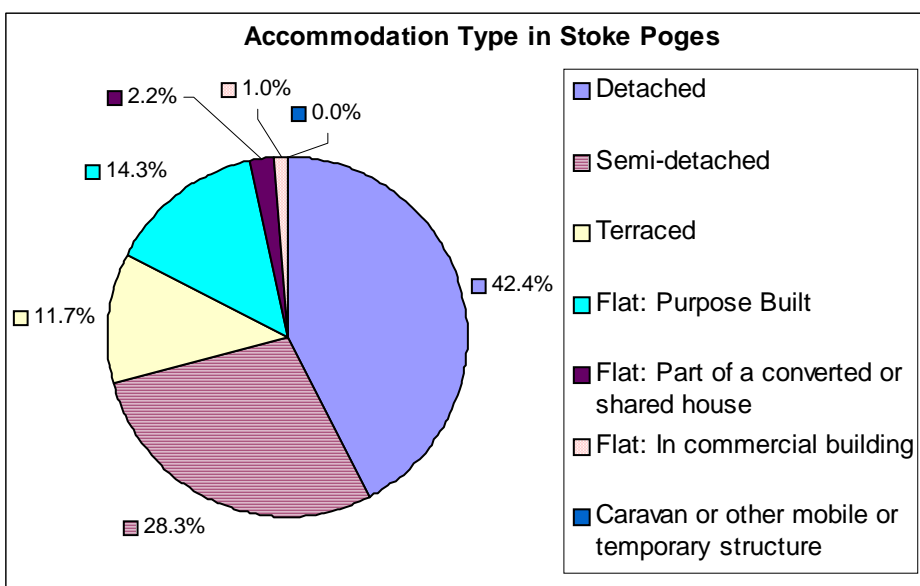
Source: Table KS18, ONS, Census 2001

Within Stoke Poges there is a high percentage of owner occupied housing which makes up 80.5% of the household tenure within the Ward, this is 2.5% higher than the average for South Bucks and is 11.6% higher than the England average. Almost 42% of this owner occupied housing is owned outright.

Household Tenure	Stoke Poges	South Bucks	England & Wales
Owner Occupied	80.5%	78.0%	68.9%
Social Rented: Council/ Housing Association/ Registered Social Landlord	11.3%	12.6%	19.2%
Private Rented: Private landlord or letting agency	5.0%	6.1%	8.7%
Other	3.1%	3.3%	3.2%

Accommodation Type

Source: Table KS16, ONS, Census 2001



Based on the 2001 Census there were 2054 households in Stoke Poges, 94.8 of these were lived in and 5.2% were either vacant or used as a second residence or holiday accommodation.

42.4% of the accommodation type for the Ward was detached housing which is similar to the District average.

Household Composition

Source: Table KS20, ONS, Census 2001

The table below shows the household composition in 2001 for Stoke Poges compared to the average for the District. The main difference to the District average is there is a higher percentage of pensioner households (4% higher) and a lower percentage of single non-pensionable households (2.6% lower).

⇒ There were 56 lone parent households with dependent children.

Household Composition	Stoke Poges (Number)	Stoke Poges (%)	South Bucks District average (%)	Difference
Single non-pensionable households	179	9.2%	11.7%	-2.6%
Single pensioner	304	15.6%	14.3%	1.3%
All other pensioner households	284	14.6%	11.9%	2.7%
Married couple households: No children	297	15.2%	14.9%	0.4%
Married couple households: With children	562	28.9%	28.6%	0.2%
Cohabiting couple households: No children	57	2.9%	4.1%	-1.2%
Cohabiting couple households: With children	42	2.2%	2.6%	-0.5%
Lone parent households: With dependent children	56	2.9%	3.3%	-0.4%
Lone parent households: All children non-dependent	52	2.7%	2.8%	-0.2%
Student households	0	0.0%	0.0%	0.0%
Other households: With dependent children	46	2.4%	2.3%	0.1%
Other households: Other	69	3.5%	3.3%	0.2%

Council Tax Banding

Source: Valuation list for the authority on 4th Oct 2010

Council tax information can provide an overview of house value within an area, however whilst they provide an overview it should be noted that these bandings were created several years ago. This information is only available at a parish level rather than by ward. The percentage of houses falling in the A-C bands (the lower council tax bands) for Stoke Poges Parish is 5% lower than the District average.

Parish	Dwelling Count	Bands A-C	Bands D-F	Bands G-H
Stoke Poges	1,906	12.6%	54.6%	32.8%
South Bucks District	27,628	17.6%	50.8%	31.6%

House prices

Source: DCLG tables from Land Registry data—2010

The average house price in 2010 in South Bucks based on house sales was £536k over 47% higher than the average for Buckinghamshire. The average for Chiltern was £457,202, Wycombe was £338,294 and Aylesbury Vale was £273,022.

Acorn Data

Source: Acorn Data 2010, produced by CACI

Acorn Data provides useful data about the characteristics of people based on the postcode in which they live. Using data from a range of sources, every postcode is classified into one of 5 categories, which split down into further groups. This data provides useful information to start to understand the feelings, behaviours and expectations of each group. N.B All category names are already defined on the database.

Area	Wealthy Achievers	Urban Prosperity	Comfortably Off	Moderate Means	Hard Pressed	No Classification
Stoke Poges	70.7%	3.4%	22.4%	0.6%	2.3%	0.6%
South Bucks	60.3%	10.9%	21.6%	2.1%	3.8%	1.3%

Looking at the five main categories it shows that Stoke Poges has a higher percentage of 'Wealthy Achiever' households than the District average by 10.4%. The tables below provide a detailed split down into smaller groupings which provide an idea of the type of households within each category.

Category 1 - Wealthy Achievers	Ward %	District %
Wealthy Mature Professionals	21.8%	24.2%
Villages with Wealthy Commuters	31.6%	14.4%
Well Off Managers	4.0%	4.8%
Affluent Greys	4.0%	6.7%
Flourishing Families	9.2%	10.3%

Category 2 - Urban Prosperity	Ward %	District %
Urban Professionals	3.4%	10.9%

Category 3 - Comfortably Off	Ward %	District %
Secure Families	12.6%	13.3%
Settled Suburbia//Prudent Pensioners	9.8%	8.4%

Category 4 - Moderate Means	Ward %	District %
Moderate Means	0.6%	2.1%

Category 5 - Urban Prosperity	Ward %	District %
Hard Pressed	2.3%	3.8%

Unclassified	Ward %	District %
Unclassified	0.6%	1.3%

The main type of grouping within this Ward is 'Villages with Wealthy Commuters' who make up 31.6% of the ward. This group places importance on education, but has a slightly older age profile than average with less children. Household incomes are high and overall deprivation levels are very low. People tend to be fairly active, pursuing outdoor and indoor activities. They value their health, but not all lifestyle choices are healthy. A variety of modes of transport and flexible home working are important even though car ownership rates are high.

Employment & Education

Economically active

Source: CAS028, ONS, Census 2001

Based on information from the 2001 Census 78.3% of the working age population within the Ward are economically active, this is slightly higher than the average for the District. The female and male breakdown shows that there is 68.9% of the female working age population who are economically active within Stoke Poges which is slightly higher than the District average.

	Stoke Poges	South Bucks	Great Britain
Economically active (% of working age population)			
All People	78.3%	77.9%	74.0%
Males	88.3%	87.7%	81.4%
Females	68.9%	68.6%	66.8%
Unemployed (% of economically active)			
All People	3.4%	3.0%	5.7%

3.4% of the economically active population are unemployed in Stoke Poges which is 0.4% higher than the District average.

Based on latest estimates the economically active rate for South Bucks is 76.5% and the rate for Great Britain is 76.2% (source: Annual Population Survey Jan - Dec 2010).

Hours worked

Source: CAS029, ONS, Census 2001

The table opposite shows that 76.3% of the people in employment within the Ward work full-time hours and 23.7% work part-time hours. Looking at the split down by sex, 90.7% of males worked full time and 9.3% worked part time and 59.1% of females worked full time and 40.9% worked part time.

	Stoke Poges	South Bucks	Great Britain
Hours worked - for all people in employment			
Full time	76.3%	77.4%	75.9%
Part time	23.7%	22.6%	24.1%

Employment by Occupation

Source: CAS033, ONS, Census 2001

For the population of Stoke Poges the top 3 occupation groups are:

- Managers and Senior Officials who make up 26.1% (South Bucks Average 25.8%)
- Associate Professional and Technical who make up 15.9% (South Bucks Average 15.4%)
- Administrative & Secretarial who make up 14.4% (South Bucks Average 14.0%)

These 3 occupation groups contribute just over 56% of occupations for the Ward.

Jobseeker's Allowance (JSA) Claimants

Source: ONS claimant count with rates and proportions, Nomisweb (June 2011)

Within Stoke Poges Ward there were 44 people claiming Job Seekers Allowance based on a quarterly snapshot from June 2011. This accounts for 1.4% of the working age population which is slightly higher than the South Bucks average of 1.3% but lower than the Great Britain average of 3.7%.

Education

Source: CAS032, ONS, Census 2001

Within Stoke Poges 28.5% of people aged 16 to 74 have higher level qualifications which is similar to the average for the District. 27.3% have no qualifications which is slightly higher than the South Bucks average but 8.5% lower than the Great Britain average.

	Stoke Poges (numbers)	Stoke Poges %	South Bucks %	Great Britain %
No qualifications or level unknown ¹	957	27.3%	26.7%	35.8%
Lower level qualifications ²	1551	44.2%	44.6%	43.9%
Higher level qualifications ³	1000	28.5%	28.6%	20.4%

¹ People without any academic, vocational or professional qualification or level unknown

² Qualifications equivalent to Level 1 to 3 of the National Key Learning Targets (i.e. GCSE's, O-Levels, A-Levels, NVQ Level 1-3)

³ Qualifications of Level 4 & above (i.e. first/higher degrees, NVQ Level 4 & 5, HND, HNC & other professional qualifications)

Travel

Distance Travelled to Work

Source: Table UV35, ONS, Census 2001

The table below shows the distance travelled to work for all people aged 16 to 74 who were in employment based on information collected in the 2001 Census.

	Stoke Poges	South Bucks	South East	England & Wales
Works mainly at or from home	14.2%	13.1%	9.9%	9.2%
Less than 2km	10.7%	12.2%	20.4%	20.0%
2km to less than 5km	20.4%	15.3%	17.6%	20.0%
5km to less than 10km	16.4%	19.5%	15.2%	18.2%
10km to less than 20km	16.6%	16.4%	13.7%	15.2%
20km to less than 40km	14.2%	14.9%	10.3%	7.7%
40km and over	2.4%	3.3%	7.5%	4.9%
No fixed place of work	4.7%	4.9%	5.1%	4.4%
Other	0.4%	0.4%	0.3%	0.3%

Within Stoke Poges there was a slightly higher percentage of people who worked mainly at or from home than the District average. The main difference between the Ward and the District average is the amount of people travelling between 2km to less than 5km to work which is 5.1% higher than the average for the District.

Method of Travel to Work

Source: Table UV39, ONS, Census 2001

The table below shows the method of travel to work for the usual resident population aged 16 to 74 who were in work based on information collected in the 2001 Census.

	Stoke Poges	South Bucks	South East	England & Wales
Driving a car or van	66.5%	65.0%	59.2%	55.2%
On foot	4.1%	5.9%	9.9%	10.0%
Works mainly at or from home	14.2%	13.1%	9.9%	9.2%
Bus, minibus or coach	1.3%	1.5%	4.4%	7.4%
Passenger in a car or van	4.8%	4.3%	5.7%	6.3%
Train	4.9%	5.8%	5.6%	4.1%
Underground, metro, light rail or tram	1.2%	1.3%	0.2%	3.0%
Bicycle	1.3%	1.5%	3.1%	2.8%
Motorcycle, scooter or moped	0.8%	0.8%	1.1%	1.1%
Other	0.8%	0.8%	0.9%	1.0%

Within Stoke Poges figures for method of travel for the Ward are similar to the District average. There is a slightly higher percentage of people who work mainly at or from home.

Car and Van Ownership

Source: Table UV62, ONS, Census 2001

The table below shows that in 2001 that 10.5% of households in Stoke Poges did not own a car or van which was a lot lower than the average for England and Wales.

	Stoke Poges	South Bucks	South East	England & Wales
No car or van	10.5%	11.1%	19.4%	26.8%
1 car or van	34.3%	36.0%	42.6%	43.8%
2 cars or vans	39.5%	38.9%	29.6%	23.5%
3 or more cars or vans	15.7%	14.0%	8.4%	5.9%

Health

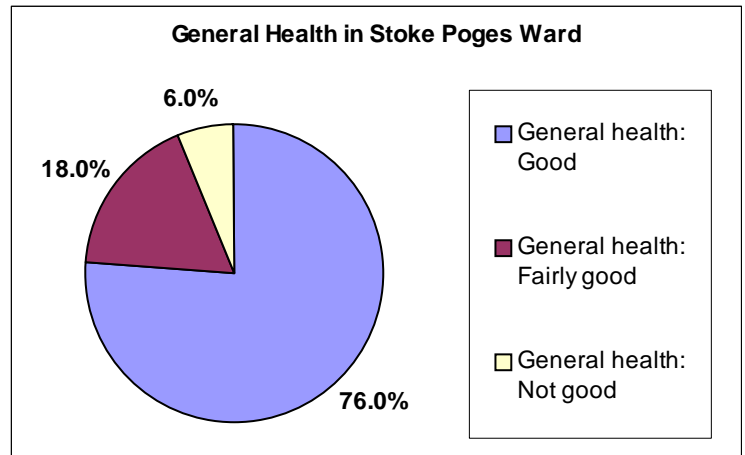
General Health & Limiting Long-term Illness

Source: Table KS08, ONS, Census 2001

76% of people within Stoke Poges declare themselves as having good health, this is slightly higher than the average for South Bucks. The Ward percentage is 7.4% higher than the England and Wales average of 68.6% who declared they had good health.

People declaring themselves as having not good general health in the Ward is slightly higher than the average for the District but lower than the England and Wales average.

In 2001 there was an estimated 13.1% of the population of Stoke Poges who had a limiting long-term illness which equates to 634 people, this percentage is the same as the District average but lower than the average for England and Wales which is 18.2%.



Provision of Unpaid Care

Source: Table KS08, ONS, Census 2001

Within the Stoke Poges Ward 11.1% of the population provide some form of unpaid care, this equates to 538 people. The split down of this is as follows:

- 77.7% (418 people) were providing 1-19 hours unpaid care a week
- 9.5% (51 people) were providing 20-49 hours unpaid care a week
- 12.8% (69 people) were providing 50 or more hours unpaid care a week

Disability Living Allowance Claimants

Source: Department of Work and Pensions, August 2010

Disability Living Allowance is payable to people who are disabled and who have personal care needs, mobility needs or both. It consists of two components, the care component for people who need help with personal care and the mobility component for people who need help with getting around.

Within Stoke Poges Ward there were 140 people claiming Disability Living Allowance based on figures from August 2010 which accounted for about 8.5% of the total claimants for South Bucks. The age breakdown of claimants is shown in the table opposite. 75 of the claimants were male and 65 were female.

Of the people claiming disability living allowance:

- 10 had a claim duration for less than 12 months,
- 10 had a claim duration for between 1 & 2 years,
- 15 had a claim duration which was between 2 & 5 years
- 105 had a claim duration which was 5 years and over

Claimants Age	Count of Claimants
Claimants Aged Under 16	10
Claimants Aged 16-24	10
Claimants Aged 25-49	35
Claimants Aged 50-59	20
Claimants Aged 60-69	40
Claimants Aged 70 and Over	25

Incapacity Benefit/Severe Disablement Allowance is a benefit provided to people due to them being incapable of work through illness or disability. This includes Sickness/Invalidity Benefit and Severe Disablement and Incapacity Benefit. Within the Stoke Poges Ward there were 85 people claiming this type of benefit, 70 of which were Incapacity Benefit Claimants and 15 of which were severe Disablement Allowance Claimants.

Data has been rounded to base 5 for all figures in order to protect small counts.

Deprivation

Source: *Indices of Multiple Deprivation 2010, CLG.*

The Indices of Multiple Deprivation 2010 (IMD 2010) is a measure of deprivation at the small area level—Lower Super Output Area (LSOA). England is split into 32,482 LSOAs, LSOAs have a minimum population of 1000, and overall average population of 1500, and were ranked to create the IMD. All of the LSOAs in England are ranked, the LSOA ranked 1 by the IMD 2010 is the most deprived and the LSOA ranked 32,482 is the least deprived.

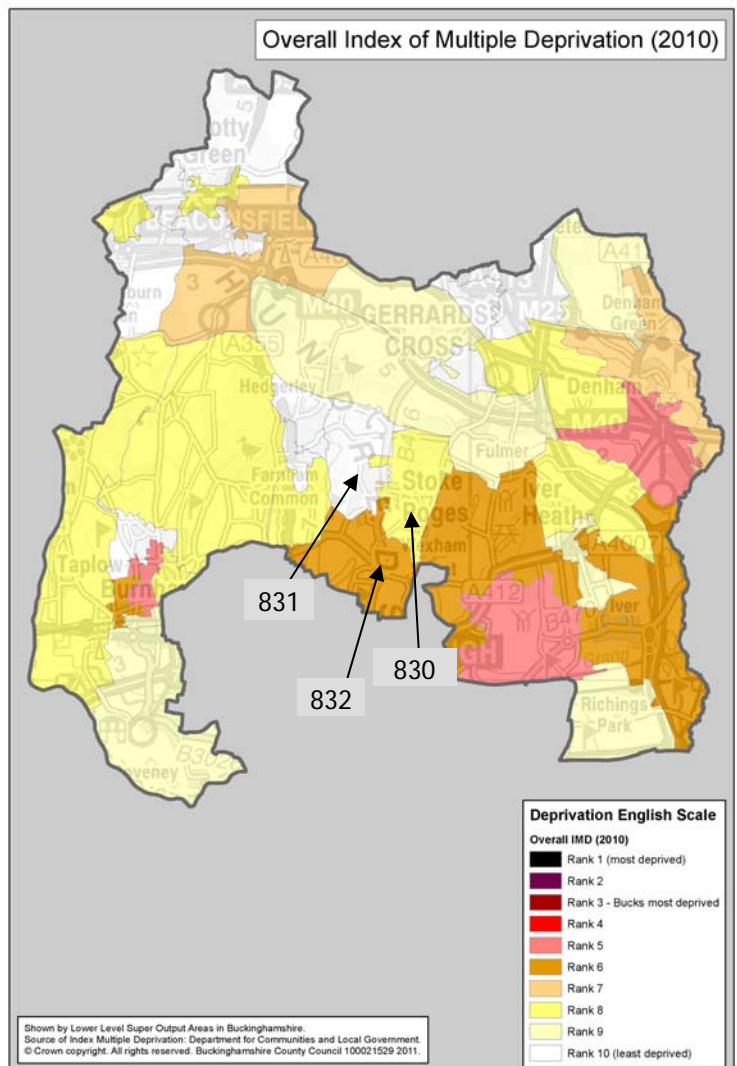
- Stoke Poges Ward is made up of 3 LSOAs (830, 831 & 832 –locations shown on the map).

The IMD model is based on 7 distinct dimensions of deprivation which are then given a weighting to work out an overall ranking for deprivation as the table below shows.

Domain	Weighting
Income Deprivation	22.5%
Employment Deprivation	22.5%
Health Deprivation & Disability	13.5%
Education, Skills & Training Deprivation	13.5%
Barriers to Housing and Services	9.3%
Crime & Disorder	9.3%
Living Environment Deprivation	9.3%

The different domains

- Income Deprivation covers a range of indicators including adults and children in Income Support/ Income-Based JSA/ Pension Credit/ certain child tax credit families and Asylum seekers receiving subsistence/accommodation support.
- Employment Deprivation measures involuntary exclusion of working age population from the labour market. This includes indicators on recipients of Jobseekers Allowance, Incapacity Benefits, Severe Disablement Allowance, claimants of employment and support allowance, participants in the New Deal for under 25s, over 25s and new parents.
- Health Deprivation and Disability domain measures rates of poor health, early mortality and disability in an area and covers the entire age range, it includes indicators on years of potential life lost, comparative illness and disability ratio, proportion of adults under 60 suffering from mood or anxiety disorders and measures of acute morbidity.
- Education Skills and Training Deprivation covers two sub-domains: one relating to education deprivation for children/young people in the area, and one relating to lack of skills and qualifications among a sub-set of the working age population.
- Barriers to Housing and Services domain splits into two sub-domains: geographical barriers which looks at road distance to a GP surgery/general stores or supermarket/primary school and to a Post office; wider barriers includes issues relating to access to housing such as affordability and household overcrowding.
- Crime domain measures the rate of recorded crime for four major crime types, representing the risk of personal and material victimisation at a small area level. These include Burglary, Theft, Criminal Damage and Violence.
- Living environment deprivation comprises two sub-domains: the 'indoors' which measures the quality of housing (housing in poor condition and without central heating), and the 'outdoors' which contains two measures about air quality and road traffic accidents.



For the overall level of deprivation one of the LSOAs in Stoke Poges (LSOA 831) falls in the least deprived 2% in England. The other two LSOAs have a higher level of deprivation with LSOA 830 falling in the least deprived 26% in England and LSOA 832 falling in the least deprived 44% in England.

For each LSOA within Stoke Poges the table below shows the rank out all the LSOAs in England, the deprivation percentage and the rank compared to the other LSOAs in the District for each domain.

Domain	LSOA	Rank out of 32,482 LSOAs in England 1 most deprived / 32,482 least deprived	Deprivation % 0 = most deprived 100 = least deprived	Rank out of LSOAs in District 1 = lowest rank 40= highest rank
Overall Deprivation	830	24,160	74.38%	18/40
	831	32,145	98.96%	39/40
	832	18,493	56.93%	7/40
Income Deprivation	830	21,839	67.23%	16/40
	831	32,069	98.73%	37/40
	832	25,573	78.73%	19/40
Employment Deprivation	830	23,711	73.00%	10/40
	831	30,953	95.29%	26/40
	832	23,216	71.47%	7/40
Health Deprivation & Disability	830	30,063	92.55%	17/40
	831	32,218	99.19%	32/40
	832	26,687	82.16%	10/40
Education, Skills & Training Deprivation	830	24,921	76.72%	15/40
	831	31,151	95.90%	31/40
	832	26,409	81.30%	21/40
Barriers to Housing & Services	830	6,116	18.83%	11/40
	831	17,412	53.61%	21/40
	832	12,972	39.94%	15/40
Crime & Disorder	830	16,646	51.25%	35/40
	831	26,361	81.16%	39/40
	832	668	2.06%	2/40
Living Environment Deprivation	830	27,203	83.75%	31/40
	831	29,378	90.44%	35/40
	832	16,970	52.24%	5/40

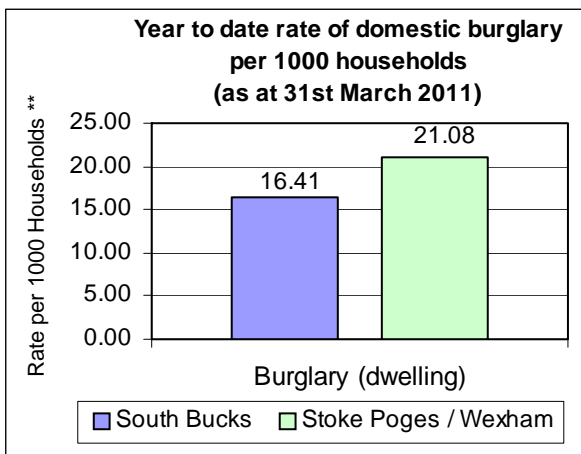
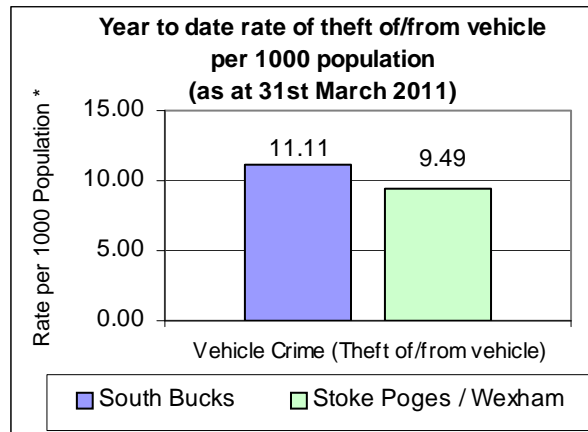
- For Income Deprivation one of the LSOAs in Stoke Poges (831) falls in the least deprived 2% in England, LSOA 830 falls in the least deprived 33% in England and LSOA 832 falls in the least deprived 22% in England.
- For Employment Deprivation all LSOAs fall in the least deprived 29% in England with SOA 831 falling in the least deprived 5% in England.
- For Health Deprivation & Disability, two of the LSOAs (830 & 831) fall within the least deprived 8% in England and LSOA 832 falls within least deprived 18% in England.
- For Barriers to Housing & Services there is a difference between the 3 LSOAs in the Ward. Two of the LSOAs in Stoke Poges fall in the lower half of all LSOAs in England with LSOA 830 falling within the most deprived 19% and LSOA 832 falling in the most deprived 40%.
- For the Crime & Disorder domain LSOA 832 falls in the most deprived 3% in England and is ranked 2 out of 40 compared to the other LSOAs in the District. LSOA 830 falls just outside the lower half of all LSOAs in England and LSOA 831 is in the least deprived 19% and ranked 39 out of 40 compared to the other areas in the District.
- For Living Environment Deprivation two LSOAs in Stoke Poges fall within the least deprived 17% in England, and LSOA 832 falls just outside the lower half of LSOAs in England.

Crime

Source: Thames Valley Police Crime Summary for South Bucks District as at 31st March 2011

Information on crime levels is produced at the Police Neighbourhood level rather than by Ward. The information is based on year to date crime summaries produced by Thames Valley Police for the District.

The graph opposite shows that for the Stoke Poges/Wexham police neighbourhood area the rate of theft of or from a vehicle per 1,000 population is lower than the average for the District. Based on the previous years reporting, vehicle crime decreased by 43.8% for this police neighbourhood area from 112 incidents in 2009/10 to 63 incidents in 2010/11.



The rate of domestic burglary per 1,000 households for Stoke Poges/Wexham police neighbourhood area is higher than the District average. The number of domestic burglaries for this police neighbourhood area has increased from 26 in 2009/10 to 59 in 2010/11.

* Population figures to work out the rates per 1000 population are based on the Civil Parish population estimates in South Bucks, mid-2009.

** Household figures to work out the rates per 1000 households are based on the 2001 census data for Parishes and includes new housing completions per parish from 2001-2011. Data inaccuracy may occur due to boundary variations.

The table below shows the number of offences over the last three years for the Stoke Poges/Wexham police neighbourhood area and the District:

Number of offences	Stoke Poges/Wexham					South Bucks				
	2008/2009	2009/2010	% change	2010/2011	% change	2008/2009	2009/2010	% change	2010/2011	% change
Vehicle Crime Theft of/from vehicle)	106	112	5.7%	63	-43.8%	1125	1003	-10.8%	740	-26.2%
Burglary (Dwelling)	61	26	-57.4%	59	126.9%	601	511	-15.0%	432	-15.5%
All Crime	473	447	-5.5%	363	-18.8%	6323	5809	-8.1%	4843	-16.6%

Crime statistics for the District are produced by Thames Valley Police on a monthly basis and should be used for up to date trend information. There are some differences between the neighbourhood police area figures and the overall South Bucks figures due to different timelines in producing the report and crimes that are reclassified over the reporting period.

When using this Ward Profile please note that information is taken from a variety of sources and SBDC can not vouch for its accuracy & reliability. Many statistics come from the 2001 Census so this should be taken into account when utilising these figures as these are now 10 years old.

Some of the data contained in this profile is protected by various copyrights and cannot be re-used elsewhere without permission of the relevant copyright holder (please refer to source data for more information).