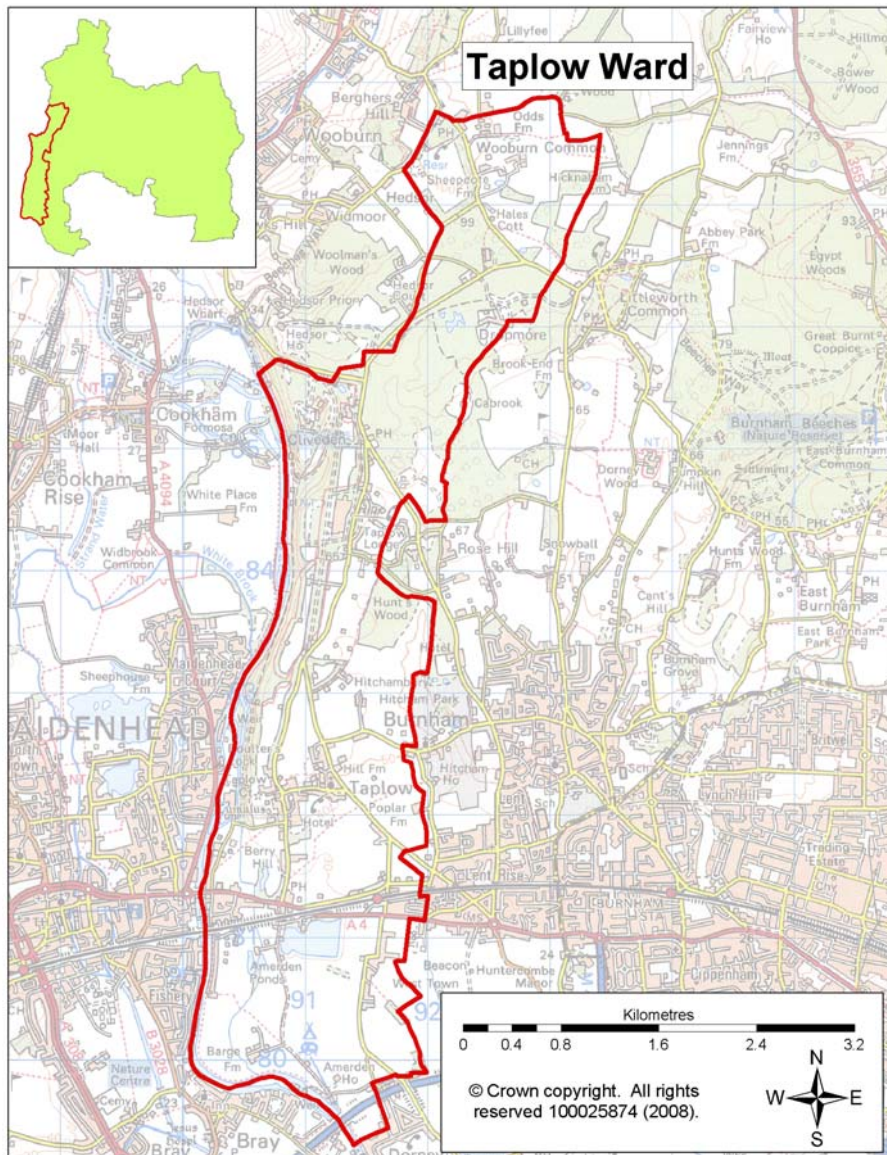


This ward profile aims to provide an overview of information about the Taplow Ward. The majority of this information is at ward level for Taplow, except for a small number of statistics which are only available at parish or district level.



Summary of key points:

- there were 300 people within the 0-19 age group living within the Ward which contributes 17.1% to the population of Taplow; this is 6.8% lower than the average of 23.9% for South Bucks for this age group;
- based on 2001 Census figures the working age population makes up 62.2% of the population of Taplow, this is 3.5% higher than the average for South Bucks;
- the number of persons per hectare in Taplow based on the 2001 Census information was 1.41, this is lower than the average population density of 4.38 for South Bucks and 3.45 for England and Wales;
- 20.8% of the accommodation type in Taplow was terraced housing which is 7.2% higher than the District average of 13.6%. Flats which were part of a converted or shared house made up 9.0%, higher than the District average of 1.6% and caravans or other mobile structures accounted for 6.3% of the accommodation type, higher than the District average of 1.6%;
- for Taplow there is a higher percentage of single non-pensionable households (9.2% higher), cohabiting couples and married couples with no children (8.5% higher) and a lower percentage of married couple households with children (9.2% lower) compared to the District average;
- within Taplow 37.2% of people aged 16 to 74 have higher level qualifications which is 8.6% higher than the average for South Bucks;
- the rate of vehicle crime per 1,000 population and the rate of domestic burglaries per 1,000 households for the Taplow & Dorney Police Neighbourhood areas is higher than the average for South Bucks.

Population

Age structure

Source: Office of National Statistics—mid year population estimates 2009 ward & district level

In 2009 the population of Taplow Ward was 1,755 with males making up 48.7% of the population and females making up 51.3%. The age breakdown of the Ward's population is shown in the table below.

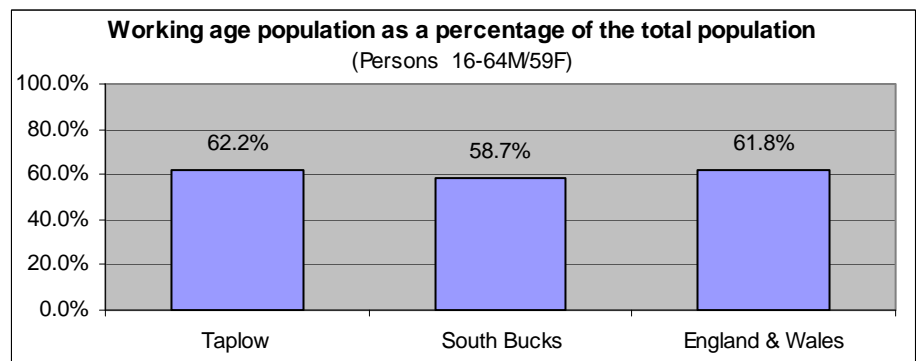
	Total	0-4	5-14	15-19	20-44	45-64	65+
Taplow	1,755	4.7%	8.9%	3.5%	33.8%	30.0%	19.1%
South Bucks	66,600	5.7%	12.5%	5.7%	29.7%	27.9%	18.3%
England & Wales	-	6.1%	11.3%	6.4%	34.5%	25.3%	16.4%

- There were 300 people within the 0-19 age group living within the Ward which contributes 17.1% to the population of Taplow; this is 6.8% lower than the average of 23.9% for South Bucks.
- The 65 and over age group make up 19.1% of the Ward this is slightly higher than the average for South Bucks and 2.7% lower than the England & Wales average.
- There was a 7.2% increase in population in the ward from 2005-2009 based on mid year estimates, 2.5% higher than the average increase for South Bucks of 4.7%.

Working Age Population

Source: Office of National Statistics—2010 Ward Population Estimates, mid-2009 (experimental statistics) - working age

Based on mid-2009 figures the working age population makes up 62.2% of the population of Taplow, this is 3.5% higher than the average for South Bucks and 0.4% higher than the average for England & Wales.



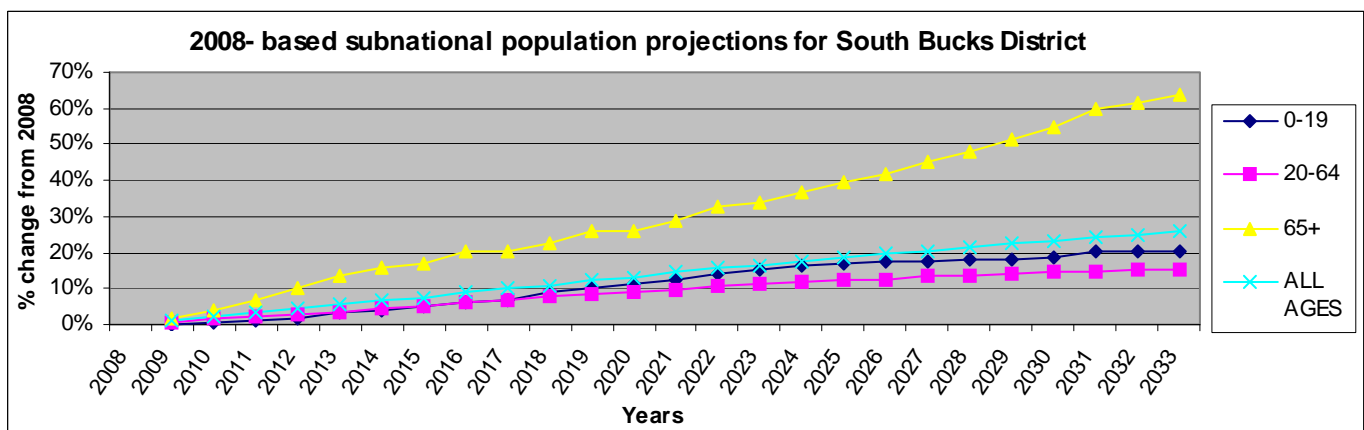
Population Projections

Source: 2008-based sub national population projections, Office for National Statistics/Bucks Strategic Partnership (BSP) population projections October 2010

National population projections are not available at ward level but based on the latest national population projections South Bucks District is predicted to have a population increase of 25.9% over the next 25 years from 65,700 to 82,700. The projections are trend based which means assumptions for future levels of births, deaths and migration are based on observed levels (they do not take into account any future policy changes that have not yet occurred). Within these figures based on projections for the district from 2008 to 2033:

- the 0-19 age group is predicted to rise by 20.1% (England 10.4%);
- the 20-64 age group by 15.5% (England 8.3%); and
- the 65+ age group by 63.9% (England 65.3%).

Local population projections at district and ward level (commissioned by Bucks CC) have been produced which take account of additional datasets including housing provision in the area and other local inputs. These put the population at 67,550 in 2026 (a difference of over 11,000 from the national projections). The significant differences between the projections means caution needs to be applied when using these figures (further information about both sets of projections can be found on KnowledgeSource).



Population Density

Source: Table UV02, ONS, Census 2001

The number of persons per hectare in Taplow based on the 2001 Census information was 1.41, this is lower than the average of 4.38 for South Bucks and 3.45 for England and Wales.

Ethnicity

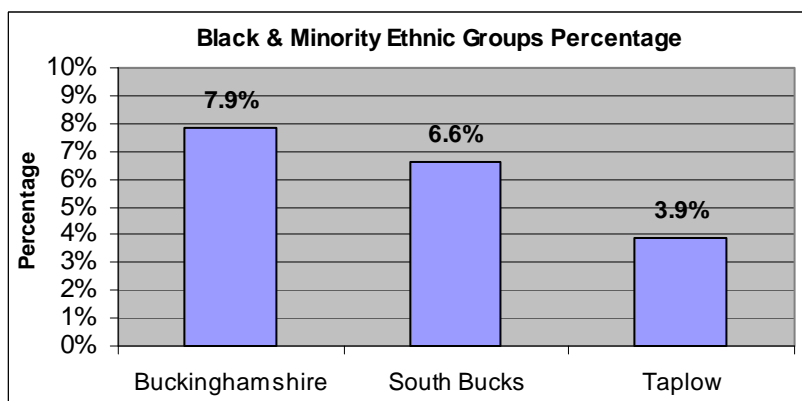
Source: Table KS06 & UV08, Census 2001/ Nomisweb standard tables, ONS.

Resident Population Estimates by Ethnic Group (experimental), 2009, Office for National Statistics.

Based on 2001 Census information 86.5% of the population of Taplow Ward stated their ethnicity as White British; this is the same as the average for South Bucks. 8.3% of the population of the Ward declare their ethnicity as Other-White, higher than the 5.1% average for South Bucks.

There are 3.9% of the population who are from Black & Minority Ethnic (BME) Groups this is lower than the 6.6% average for South Bucks. This is split down into the following BME Groups.

BME mix	Percentage
Mixed	1.0%
Asian or Asian British	2.1%
Black or Black British	0.0%
Chinese or other ethnic group	0.8%



The BME groups tend to be higher in the younger age group as the split below shows:

- For the 0-19 age group 3.6% of the population are from BME Groups (10.2% South Bucks average)
- For the 20-64 age group 3.3% of the population are from BME groups (6.7% South Bucks average)
- For the 65 and over age group 2.5% of the population are from BME groups (1.5% South Bucks average)

Looking at the change from the 1991 to 2001 Census for South Bucks District, 3.3% identified with one of the non-white ethnic categories in 1991 compared to 6.6% in 2001, an increase of 3.3%. Based on experimental population estimates for 2009 13.1% of the population in South Bucks were from a non-white ethnic group.

14.9% of the population of Taplow were born outside of the UK which is higher than the District average of 12.2%. The Ward population born outside the UK are predominantly from other Western European countries (4.6%), Africa (2.7%), Asia (2.6%) and North America (1.9%).

Religion

Source: Table KS07, ONS, Census 2001

Based on 2001 Census information 73.4% of the population of Taplow Ward stated their religion as Christianity; this is lower than the 75.6% average for South Bucks. 17.1% stated that they had no religion, this is the highest percentage compared to the other wards in the District.

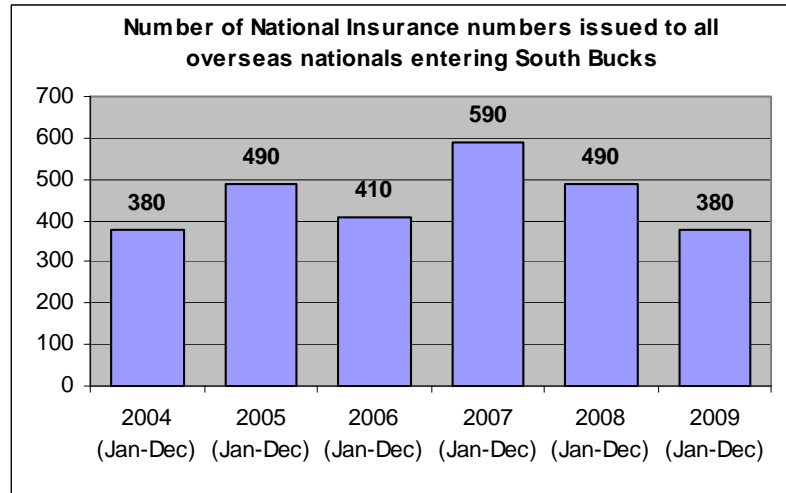
People stating religion as:	Taplow	South Bucks	England and Wales
Christian	73.4%	75.6%	71.8%
Buddhist	0.9%	0.3%	0.3%
Hindu	0.8%	1.2%	1.1%
Jewish	0.3%	0.5%	0.5%
Muslim	0.4%	1.1%	3.0%
Sikh	0.8%	1.6%	0.6%
Other religions	0.0%	0.3%	0.3%
No religion	17.1%	12.5%	14.8%
Religion not stated	6.4%	6.9%	7.7%

Migrant Workers

Source: DWP 2009, Local Area Migration Indicators table from Office of National Statistics

Overseas nationals obtain a National Insurance (NI) Number before they enter into employment or upon starting work, so registrations data can be a good indication of new arrivals who are economically active. (Some foreign nationals do obtain a NI number but do not take up employment e.g. refugees will need an NI number but will not all be economically active.)

These figures are only available at district level and do not go down to ward level.



The top 6 nationalities for overseas nationals who are issued a National Insurance number entering South Bucks in 2009 were Poland, India, South Africa, USA, Australia and Germany.

Environment

Land Use Statistics

Source: Generalised Land Use Database Statistics 2005, Communities and Local Government (last updated Jan-07)

The following data is taken from experimental statistics from January 2005 from the generalised land use database. The total area of all land types for Taplow is 1123 hectares which makes up 7.9% of the land in the District. The main type of land use is greenspace and makes up 85.5% of the land use for the Ward.

Communities and Local Government consider the 2005 figures to be the definitive land use statistics. No further work is planned on the Generalised Land Use Database.

Type of land use	Hectares	% of ward area that land use type makes up	% of district that land use type makes up
Area of Domestic Buildings	8.7	0.8%	1.7%
Area of Non Domestic Buildings	8.6	0.8%	0.8%
Area of Road	25.8	2.3%	4.2%
Area of Path	4.8	0.4%	0.2%
Area of Rail	3.9	0.3%	0.2%
Area of Domestic Gardens	42.1	3.7%	11.2%
Area of Greenspace	959.6	85.5%	77.5%
Area of Water	49.4	4.4%	2.0%
Area of Other Land Uses	19.7	1.8%	2.2%
Area of Unclassified Land	0	0.0%	0.0%

Based on figures from the Council's 2009/10 Annual Monitoring Report for Taplow Parish there were:

- 616 hectares of land designated as Area of Attractive Landscape (designation by Bucks CC)
- 2 conservation areas within Taplow Parish and 76 listed buildings

Housing

Household Tenure

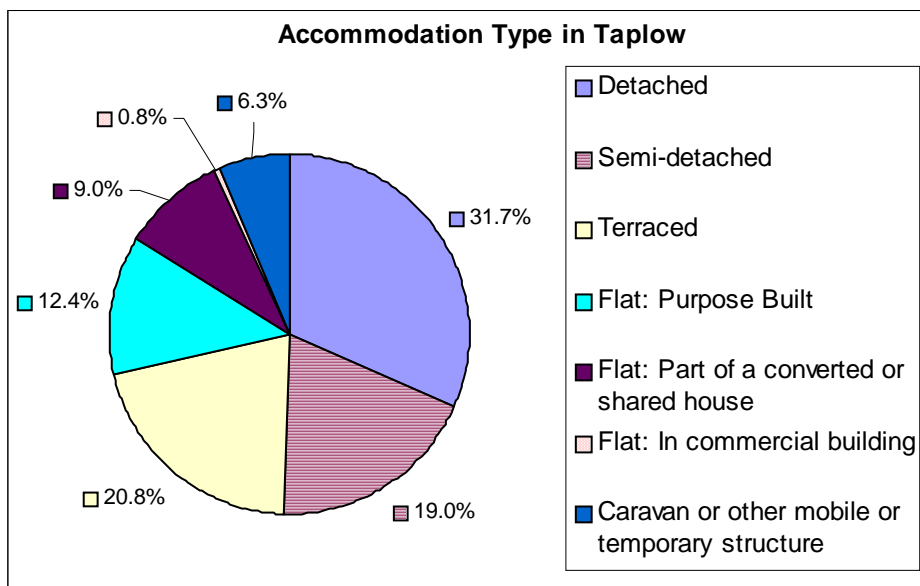
Source: Table KS18, ONS, Census 2001

Within Taplow there is a high percentage of owner occupied housing which makes up 78.8% of the household tenure within the Ward, similar to the District average. There is 12.4% of private rented housing within the Ward which is 6.3% higher than the District average.

Household Tenure	Taplow	South Bucks	England & Wales
Owner Occupied	78.8%	78.0%	68.9%
Social Rented: Council/ Housing Association/ Registered Social Landlord	2.9%	12.6%	19.2%
Private Rented: Private landlord or letting agency	12.4%	6.1%	8.7%
Other	5.9%	3.3%	3.2%

Accommodation Type

Source: Table KS16, ONS, Census 2001



Based on the 2001 Census there were 764 households in Taplow, 94.6% of these were lived in and 5.4% were either vacant or used as a second residence or holiday accommodation.

20.8% of the accommodation type was terraced housing, 7.2% higher than the District average of 13.6%. Flats which were part of a converted or shared house made up 9.0%, higher than the District average of 1.6% and caravans or other mobile structures accounted for 6.3%, higher than the District average of 1.6%.

Household Composition

Source: Table KS20, ONS, Census 2001

The table below shows the household composition in 2001 for Taplow compared to the average for the District. The main difference to the District average is there is a higher percentage of single non-pensionable households (9.2% higher), cohabiting couples and married couples with no children (8.5% higher) and a lower percentage of married couple households with children (9.2% lower).

⇒ There were 19 lone parent households with dependent children.

Household Composition	Taplow (Number)	Taplow (%)	South Bucks District average (%)	Difference
Single non-pensionable households	152	21.0%	11.7%	9.2%
Single pensioner	77	10.6%	14.3%	-3.7%
All other pensioner households	75	10.4%	11.9%	-1.6%
Married couple households: No children	133	18.4%	14.9%	3.5%
Married couple households: With children	141	19.5%	28.6%	-9.2%
Cohabiting couple households: No children	66	9.1%	4.1%	5.0%
Cohabiting couple households: With children	8	1.1%	2.6%	-1.5%
Lone parent households: With dependent children	19	2.6%	3.3%	-0.7%
Lone parent households: All children non-dependent	19	2.6%	2.8%	-0.2%
Student households	0	0.0%	0.0%	0.0%
Other households: With dependent children	12	1.7%	2.3%	-0.6%
Other households: Other	22	3.0%	3.3%	-0.3%

Council Tax Banding

Source: Valuation list for the authority on 4th Oct 2010

Council tax information can provide an overview of house value within an area, however whilst they provide an overview it should be noted that these bandings were created several years ago. This information is only available at a parish level rather than by ward. The percentage of houses falling in the A-C bands (the lower council tax bands) for Taplow Parish is 5.1% higher than the District average.

Parish	Dwelling Count	Bands A-C	Bands D-F	Bands G-H
Taplow	858	22.7%	51.7%	25.5%
South Bucks District	27,628	17.6%	50.8%	31.6%

House prices

Source: DCLG tables from Land Registry data—2010

The average house price in 2010 in South Bucks based on house sales was £536k over 47% higher than the average for Buckinghamshire. The average for Chiltern was £457,202, Wycombe was £338,294 and Aylesbury Vale was £273,022.

Acorn Data

Source: Acorn Data 2010, produced by CACI

Acorn Data provides useful data about the characteristics of people based on the postcode in which they live. Using data from a range of sources, every postcode is classified into one of 5 categories, which split down into further groups. This data provides useful information to start to understand the feelings, behaviours and expectations of each group. N.B All category names are already defined on the database.

Area	Wealthy Achievers	Urban Prosperity	Comfortably Off	Moderate Means	Hard Pressed	No Classification
Taplow	61.0%	24.4%	12.2%	0.0%	0.0%	2.4%
South Bucks	60.3%	10.9%	21.6%	2.1%	3.8%	1.3%

Looking at the five main categories it shows that Taplow has a higher percentage of households that fall in the 'Urban Prosperity' category than the District average by 13.5%. It also shows that 0% of households fall within the 'Moderate Means' or 'Hard Pressed' categories. The tables below provide a detailed split down into smaller groupings which provide an idea of the type of households within each category.

Category 1 - Wealthy Achievers	Ward %	District %
Wealthy Mature Professionals	0.0%	24.2%
Villages with Wealthy Commuters	26.8%	14.4%
Well Off Managers	0.0%	4.8%
Affluent Greys	34.1%	6.7%
Flourishing Families	0.0%	10.3%

Category 2 - Urban Prosperity	Ward %	District %
Urban Professionals	24.4%	10.9%

Category 3 - Comfortably Off	Ward %	District %
Secure Families	8.5%	13.3%
Settled Suburbia/Prudent Pensioners	3.7%	8.4%

Category 4 - Moderate Means	Ward %	District %
Moderate Means	0.0%	2.1%

Category 5 - Urban Prosperity	Ward %	District %
Hard Pressed	0.0%	3.8%

Unclassified	Ward %	District %
Unclassified	2.4%	1.3%

Within the Ward there is a high percentage of the grouping 'Affluent Greys' which is 27.4% higher than the District average. This group is made up of higher proportions of middle aged and older people, with incomes which are higher than the UK average. They tend to make healthy lifestyle choices and pursue exercise related leisure interests. Although there are small proportions of households with children, the proportion (with children) that take-up educational support services is high. Adults in this group are more likely to feel that education is important. This group are more likely to work from home.

Employment & Education

Economically active

Source: CAS028, ONS, Census 2001

Based on information from the 2001 Census 79.6% of the working age population within the Ward are economically active, this is 1.7% higher than the average of 77.9% for the District. The female and male breakdown shows that there is 70.9% of the female working age population who are economically active within Taplow which is 2.3% higher than the District average of 68.6%.

	Taplow	South Bucks	Great Britain
Economically active (% of working age population)			
All People	79.6%	77.9%	74.0%
Males	88.0%	87.7%	81.4%
Females	70.9%	68.6%	66.8%
Unemployed (% of economically active)			
All People	2.0%	3.0%	5.7%

2.0% of the economically active population are unemployed in Taplow which is 1.0% lower than the District average.

Based on latest estimates the economically active rate for South Bucks is 76.5% and the rate for Great Britain is 76.2% (source: Annual Population Survey Jan - Dec 2010).

Hours worked

Source: CAS029, ONS, Census 2001

The table opposite shows that 82.3% of the people in employment within the Ward work full-time hours and 17.7% work part-time hours. Looking at the split down by sex, 92.5% of males worked full time and 7.5% worked part time and 69.7% of females worked full time and 30.3% worked part time.

	Taplow	South Bucks	Great Britain
Hours worked - for all people in employment			
Full time	82.3%	77.4%	75.9%
Part time	17.7%	22.6%	24.1%

Employment by Occupation

Source: CAS033, ONS, Census 2001

For the population of Taplow the top 3 occupation groups are:

- Managers and Senior Officials who make up 29.6% (South Bucks Average 25.8%)
- Associate Professional and Technical who make up 16.4% (South Bucks Average 15.4%)
- Professional who make up 15.2% (South Bucks Average 13.4%)

These 3 occupation groups contribute just over 61% of occupations for the Ward.

Jobseeker's Allowance (JSA) Claimants

Source: ONS claimant count with rates and proportions, Nomisweb (June 2011)

Within Taplow Ward there were 16 people claiming Job Seekers Allowance based on a quarterly snapshot from June 2011. This accounts for 1.4% of the working age population which is slightly higher than the South Bucks average of 1.3% but lower than the Great Britain average of 3.7%.

Education

Source: CAS032, ONS, Census 2001

Within Taplow 37.2% of people aged 16 to 74 have higher level qualifications which is 8.6% higher than the average for South Bucks. 20% have no qualifications which is 6.7% lower than the South Bucks average and 15.8% lower than the Great Britain average.

	Taplow (numbers)	Taplow %	South Bucks %	Great Britain %
No qualifications or level unknown ¹	253	20.0%	26.7%	35.8%
Lower level qualifications ²	543	42.8%	44.6%	43.9%
Higher level qualifications ³	472	37.2%	28.6%	20.4%

¹ People without any academic, vocational or professional qualification or level unknown

² Qualifications equivalent to Level 1 to 3 of the National Key Learning Targets (i.e. GCSE's, O-Levels, A-Levels, NVQ Level 1-3)

³ Qualifications of Level 4 & above (i.e. first/higher degrees, NVQ Level 4 & 5, HND, HNC & other professional qualifications)

Travel

Distance Travelled to Work

Source: Table UV35, ONS, Census 2001

The table below shows the distance travelled to work for all people aged 16 to 74 who were in employment based on information collected in the 2001 Census.

	Taplow	South Bucks	South East	England & Wales
Works mainly at or from home	14.6%	13.1%	9.9%	9.2%
Less than 2km	13.1%	12.2%	20.4%	20.0%
2km to less than 5km	16.0%	15.3%	17.6%	20.0%
5km to less than 10km	16.2%	19.5%	15.2%	18.2%
10km to less than 20km	15.6%	16.4%	13.7%	15.2%
20km to less than 40km	13.4%	14.9%	10.3%	7.7%
40km and over	4.6%	3.3%	7.5%	4.9%
No fixed place of work	6.1%	4.9%	5.1%	4.4%
Other	0.3%	0.4%	0.3%	0.3%

Within Taplow 6.1% of the population had no fixed place of work which was 1.2% higher than the District average. Figures are similar to the District average with a slightly higher percentage of people who work mainly at or from home.

Method of Travel to Work

Source: Table UV39, ONS, Census 2001

The table below shows the method of travel to work for the usual resident population aged 16 to 74 who were in work based on information collected in the 2001 Census.

	Taplow	South Bucks	South East	England & Wales
Driving a car or van	65.3%	65.0%	59.2%	55.2%
On foot	6.3%	5.9%	9.9%	10.0%
Works mainly at or from home	14.6%	13.1%	9.9%	9.2%
Bus, minibus or coach	0.8%	1.5%	4.4%	7.4%
Passenger in a car or van	3.4%	4.3%	5.7%	6.3%
Train	7.0%	5.8%	5.6%	4.1%
Underground, metro, light rail or tram	0.8%	1.3%	0.2%	3.0%
Bicycle	1.5%	1.5%	3.1%	2.8%
Motorcycle, scooter or moped	0.3%	0.8%	1.1%	1.1%
Other	0.0%	0.8%	0.9%	1.0%

For Taplow Ward the method of travel to work is similar to the District average. There is a slightly higher percentage of the population who used the train than the District average and 14.6% worked mainly at or from home which was 1.5% higher than the average for the District.

Car and Van Ownership

Source: Table UV62, ONS, Census 2001

The table below shows that in 2001 that 6.5% of households in Taplow did not own a car or van which was 4.6% lower than the District average and 20.3% lower than the average for England & Wales.

	Taplow	South Bucks	South East	England & Wales
No car or van	6.5%	11.1%	19.4%	26.8%
1 car or van	39.8%	36.0%	42.6%	43.8%
2 cars or vans	39.4%	38.9%	29.6%	23.5%
3 or more cars or vans	14.4%	14.0%	8.4%	5.9%

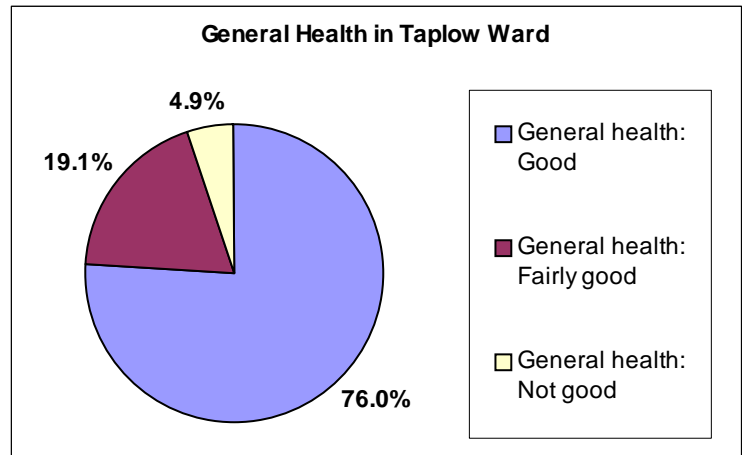
Health

General Health & Limiting Long-term Illness

Source: Table KS08, ONS, Census 2001

76% of people within Taplow declare themselves as having good health, this is slightly higher than the average for South Bucks. The Ward percentage is 7.4% higher than the England and Wales average of 68.6% who declared they had good health.

People declaring themselves as having not good general health in the Ward is lower than the average for the District and England and Wales.



In 2001 there was an estimated 11.8% of the population of Taplow who had a limiting long-term illness which equates to 187 people, this percentage is lower than the average for South Bucks of 13.1% and lower than the average for England and Wales which is 18.2%.

Provision of Unpaid Care

Source: Table KS08, ONS, Census 2001

Within the Taplow Ward 10.7% of the population provide some form of unpaid care, this equates to 170 people. The split down of this is as follows:

- 77.7% (132 people) were providing 1-19 hours unpaid care a week
- 8.8% (15 people) were providing 20-49 hours unpaid care a week
- 13.5% (23 people) were providing 50 or more hours unpaid care a week

Disability Living Allowance Claimants

Source: Department of Work and Pensions, August 2010

Disability Living Allowance is payable to people who are disabled and who have personal care needs, mobility needs or both. It consists of two components, the care component for people who need help with personal care and the mobility component for people who need help with getting around.

Within Taplow Ward there were 30 people claiming Disability Living Allowance based on figures from August 2010 which accounted for 1.8% of the total claimants for South Bucks. The age breakdown of claimants is shown in the table opposite. 10 of the claimants were male and 20 were female.

Claimants Age	Count of Claimants
Claimants Aged Under 16	5
Claimants Aged 16-24	0
Claimants Aged 25-49	5
Claimants Aged 50-59	5
Claimants Aged 60-69	5
Claimants Aged 70 and Over	10

Of the people claiming disability living allowance:

- 0 had a claim duration for less than 12 months,
- 0 had a claim duration for between 1 & 2 years,
- 5 had a claim duration which was between 2 & 5 years
- 25 had a claim duration which was 5 years and over

Incapacity Benefit/Severe Disablement Allowance is a benefit provided to people due to them being incapable of work through illness or disability. This includes Sickness/Invalidity Benefit and Severe Disablement and Incapacity Benefit. Within the Taplow Ward there were 10 people claiming this type of benefit, 5 of which were Incapacity Benefit Claimants and 5 of which were Severe Disablement Allowance Claimants.

Data has been rounded to base 5 for all figures in order to protect small counts.

Deprivation

Source: *Indices of Multiple Deprivation 2010, CLG.*

The Indices of Multiple Deprivation 2010 (IMD 2010) is a measure of deprivation at the small area level—Lower Super Output Area (LSOA). England is split into 32,482 LSOAs, LSOAs have a minimum population of 1000, and overall average population of 1500, and were ranked to create the IMD. All of the LSOAs in England are ranked, the LSOA ranked 1 by the IMD 2010 is the most deprived and the LSOA ranked 32,482 is the least deprived.

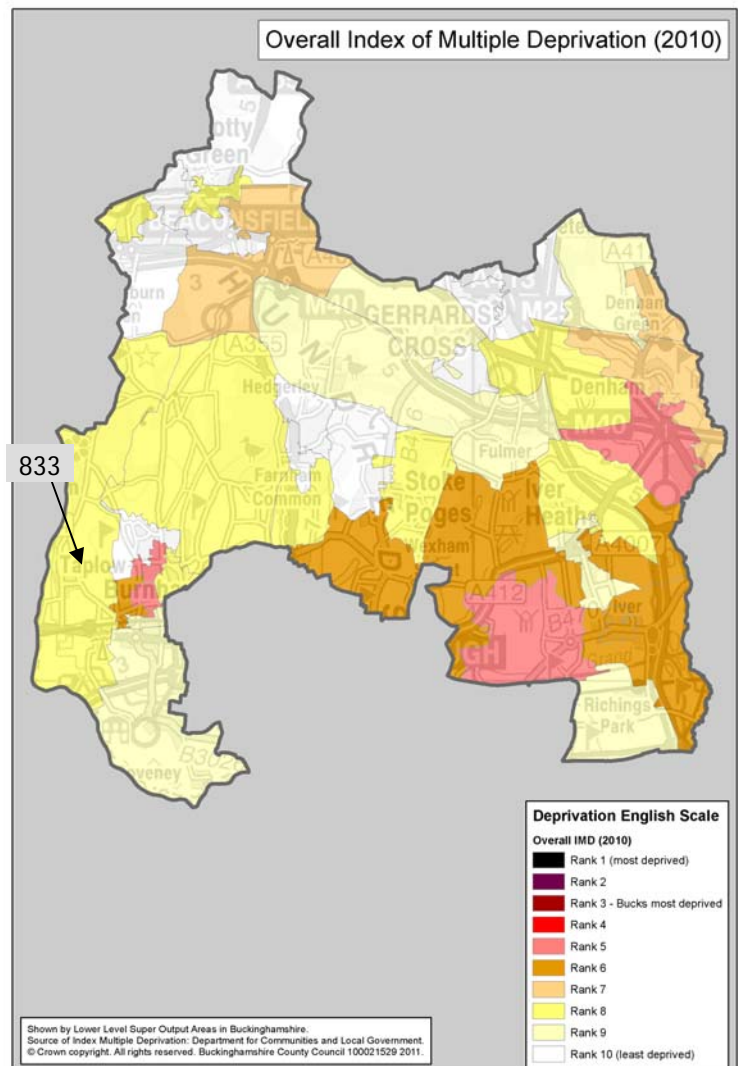
- Taplow Ward is made up of 1 LSOA (833 –locations shown on the map).

The IMD model is based on 7 distinct dimensions of deprivation which are then given a weighting to work out an overall ranking for deprivation as the table below shows.

Domain	Weighting
Income Deprivation	22.5%
Employment Deprivation	22.5%
Health Deprivation & Disability	13.5%
Education, Skills & Training Deprivation	13.5%
Barriers to Housing and Services	9.3%
Crime & Disorder	9.3%
Living Environment Deprivation	9.3%

The different domains

- Income Deprivation covers a range of indicators including adults and children in Income Support/ Income-Based JSA/ Pension Credit/ certain child tax credit families and Asylum seekers receiving subsistence/accommodation support.
- Employment Deprivation measures involuntary exclusion of working age population from the labour market. This includes indicators on recipients of Jobseekers Allowance, Incapacity Benefits, Severe Disablement Allowance, claimants of employment and support allowance, participants in the New Deal for under 25s, over 25s and new parents.
- Health Deprivation and Disability domain measures rates of poor health, early mortality and disability in an area and covers the entire age range, it includes indicators on years of potential life lost, comparative illness and disability ratio, proportion of adults under 60 suffering from mood or anxiety disorders and measures of acute morbidity.
- Education Skills and Training Deprivation covers two sub-domains: one relating to education deprivation for children/young people in the area, and one relating to lack of skills and qualifications among a sub-set of the working age population.
- Barriers to Housing and Services domain splits into two sub-domains: geographical barriers which looks at road distance to a GP surgery/general stores or supermarket/primary school and to a Post office; wider barriers includes issues relating to access to housing such as affordability and household overcrowding.
- Crime domain measures the rate of recorded crime for four major crime types, representing the risk of personal and material victimisation at a small area level. These include Burglary, Theft, Criminal Damage and Violence.
- Living environment deprivation comprises two sub-domains: the 'indoors' which measures the quality of housing (housing in poor condition and without central heating), and the 'outdoors' which contains two measures about air quality and road traffic accidents.



For the overall level of deprivation Taplow is within the least deprived 22% in England, and is ranked 21 out of 40 when compared to the other LSOAs in the District.

For each LSOA within Taplow the table below shows the rank out all the LSOAs in England, the deprivation percentage and the rank compared to the other LSOAs in the District for each domain.

Domain	LSOA	Rank out of 32,482 LSOAs in England 1 most deprived / 32,482 least deprived	Deprivation % 0 = most deprived 100 = least deprived	Rank out of LSOAs in District 1 = lowest rank 40= highest rank
Overall Deprivation	833	25,350	78.04%	21/40
Income Deprivation	833	31,921	98.27%	36/40
Employment Deprivation	833	31,566	97.18%	34/40
Health Deprivation & Disability	833	32,276	99.37%	35/40
Education, Skills & Training Deprivation	833	29,992	92.33%	29/40
Barriers to Housing & Services	833	6,060	18.66%	10/40
Crime & Disorder	833	5,143	15.83%	10/40
Living Environment Deprivation	833	18,172	55.94%	7/40

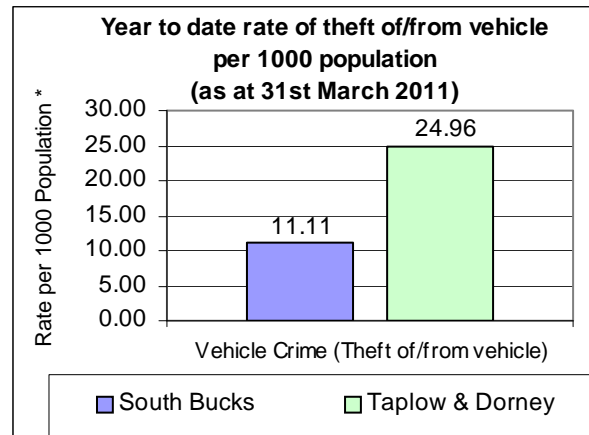
- For Income Deprivation Taplow falls in the least deprived 2% in England and is ranked 36 out of 40.
- For Employment Deprivation, Health Deprivation & Disability and Education, Skills & Training Deprivation domains Taplow falls in the least deprived 3% in England.
- Barriers to Housing & Services is high for Taplow and it falls in the most deprived 19% in England, ranking 10 out of 40 when compared to the other LSOAs in the District and ranks 10 out of 40.
- For Crime & Disorder Taplow falls in the most deprived 16% in England and ranks 10 out of 40 when compared to the other LSOAs in the District.
- For the Living Environment Deprivation Taplow falls in the least deprived 45% in England.

Crime

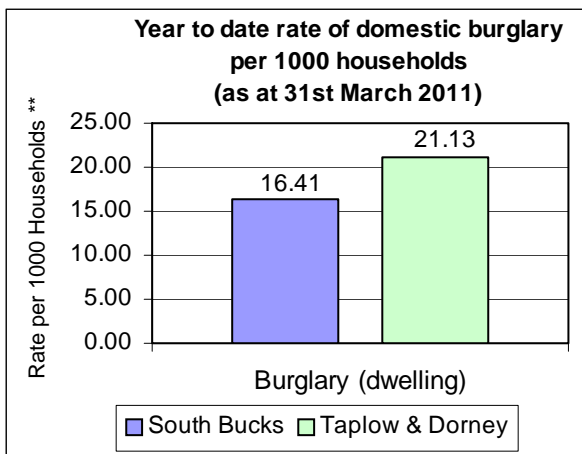
Source: Thames Valley Police Crime Summary for South Bucks District as at 31st March 2011

Information on crime levels is produced at the Police Neighbourhood level rather than by Ward. The information is based on year to date crime summaries produced by Thames Valley Police for the District. This neighbourhood group includes the parishes of Taplow & Dorney.

The graph opposite shows that for the Taplow/Dorney police neighbourhood area the rate of theft of or from a vehicle per 1,000 population is much higher than the average for the District. Based on the previous years reporting, vehicle crime decreased by 4.5% for this police neighbourhood area from 67 incidents in 2009/10 to 64 incidents in 2010/11.



The rate of domestic burglary per 1,000 households for the Taplow/Dorney police neighbourhood area is higher than the District average. The number of domestic burglaries for this police neighbourhood area decreased from 28 in 2009/10 to 24 in 2010/11.



* Population figures to work out the rates per 1000 population are based on the Civil Parish population estimates in South Bucks, mid-2009.

** Household figures to work out the rates per 1000 households are based on the 2001 census data for Parishes and includes new housing completions per parish from 2001-2011. Data inaccuracy may occur due to boundary variations.

The table below shows the number of offences over the last three years for the Beaconsfield police neighbourhood area and the District:

Number of offences	Taplow / Dorney					South Bucks				
	2008/2009	2009/2010	% change	2010/2011	% change	2008/2009	2009/2010	% change	2010/2011	% change
Vehicle Crime Theft of/from vehicle)	55	67	21.8%	64	-4.5%	1125	1003	-10.8%	740	-26.2%
Burglary (Dwelling)	23	28	21.7%	24	-14.3%	601	511	-15.0%	432	-15.5%
All Crime	274	265	-3.3%	255	-3.8%	6323	5809	-8.1%	4843	-16.6%

Crime statistics for the District are produced by Thames Valley Police on a monthly basis and should be used for up to date trend information. There are some differences between the neighbourhood police area figures and the overall South Bucks figures due to different timelines in producing the report and crimes that are reclassified over the reporting period.

When using this Ward Profile please note that information is taken from a variety of sources and SBDC can not vouch for its accuracy & reliability. Many statistics come from the 2001 Census so this should be taken into account when utilising these figures as these are now 10 years old.

Some of the data contained in this profile is protected by various copyrights and cannot be re-used elsewhere without permission of the relevant copyright holder (please refer to source data for more information).