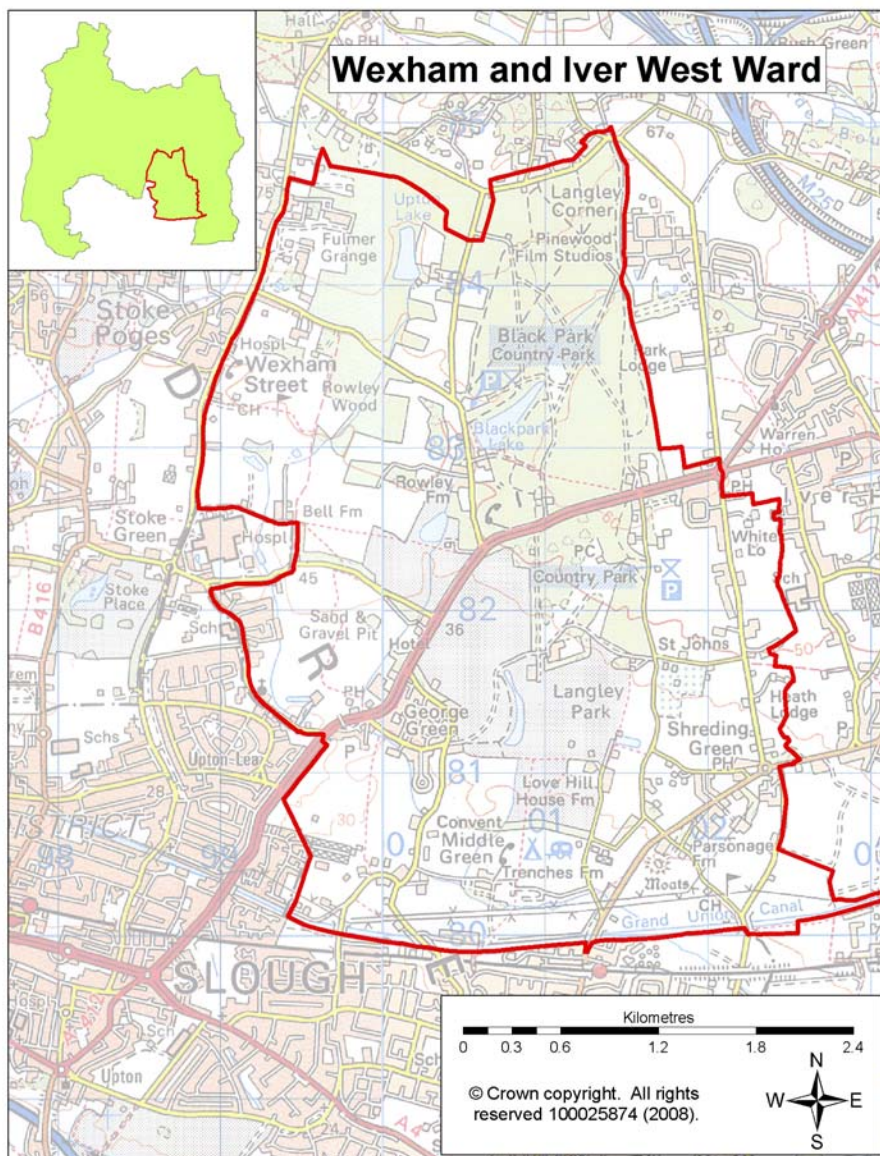


This ward profile aims to provide an overview of information about the Wexham & Iver West Ward. The majority of this information is at ward level for Wexham & Iver West, except for a small number of statistics which are only available at parish or district level.



## Summary of key points:

- for Wexham & Iver West there are 11.3% of the population who are from Black & Minority Ethnic (BME) Groups this is higher than the 6.6% average for South Bucks;
- within Wexham & Iver West there was 82.3% of owner occupied housing which is 4.3% higher than the District average and 13.4% higher than the England & Wales average;
- 18.5% of the accommodation type within Wexham & Iver West was made up of caravan or other mobile or temporary structure, this is 16.9% higher than the District average of 1.6%;
- for Wexham & Iver West there is a higher percentage of single non-pensionable households (4.5 higher) and a lower percentage of married couple households within children (3.9% lower) than the District average;
- based on Acorn Categories Wexham & Iver West has 58.3% of 'Wealthy Achiever' households slightly lower than the District average and the second highest grouping is 'Comfortably Off' which makes up 28.7% which is 7.1% higher than the District average.
- 33.3% have no qualifications which is 6.6% higher than the South Bucks average but 2.5% lower than the Great Britain average;
- 70.9% of people within Wexham & Iver West declare themselves as having good health, this is 4.4% lower than the average for South Bucks;
- based on the 2010 Indices of Deprivation one of the Lower Super Output Areas falls into the lower half of all LSOAs in England with the other LSOA in the Ward falling in the least deprived 46%. For the Barriers to Housing & Services domain both Lower Super Output Areas (SOAs) within the Ward fall within the most deprived 11% in England due to the road distance to certain services.

## Population

### Age structure

Source: Office of National Statistics—mid year population estimates 2009 ward & district level

In 2009 the population of Wexham & Iver West Ward was 3,108 with males making up 49.2% of the population and females making up 50.8%. The age breakdown is shown in the table below.

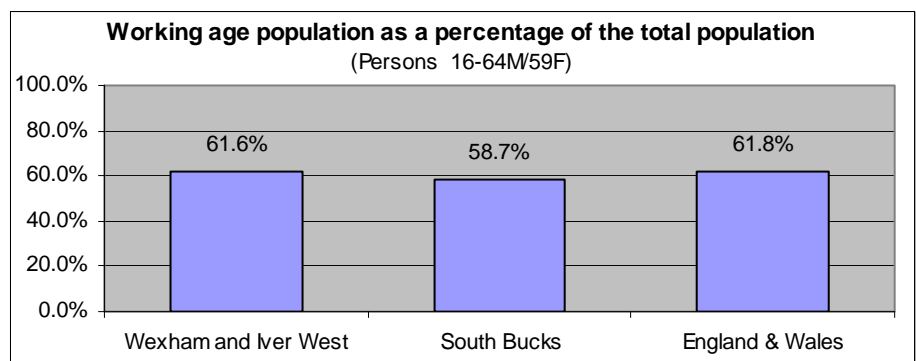
	Total	0-4	5-14	15-19	20-44	45-64	65+
Wexham and Iver West	3,108	5.0%	10.4%	6.5%	31.1%	28.9%	18.1%
South Bucks	66,600	5.7%	12.5%	5.7%	29.7%	27.9%	18.3%
England & Wales	-	6.1%	11.3%	6.4%	34.5%	25.3%	16.4%

- There were 680 people within the 0-19 age group living within the Ward which contributes 21.9% to the population of Wexham & Iver West; this is 2% lower than the average of 23.9% for South Bucks.
- The 65 and over age group make up 18.1% of the Ward this is slightly lower than the average for South Bucks.
- There was a 1.7% increase in population in the ward from 2005-2009 based on mid year estimates, 3% lower than the average increase for South Bucks of 4.7%.

### Working Age Population

Source: Office of National Statistics—2010 Ward Population Estimates, mid-2009 (experimental statistics) - working age

Based on mid-2009 figures the working age population makes up 61.6% of the population of Wexham & Iver West, this is 2.9% higher than the average for South Bucks and slightly lower than the average for England & Wales.



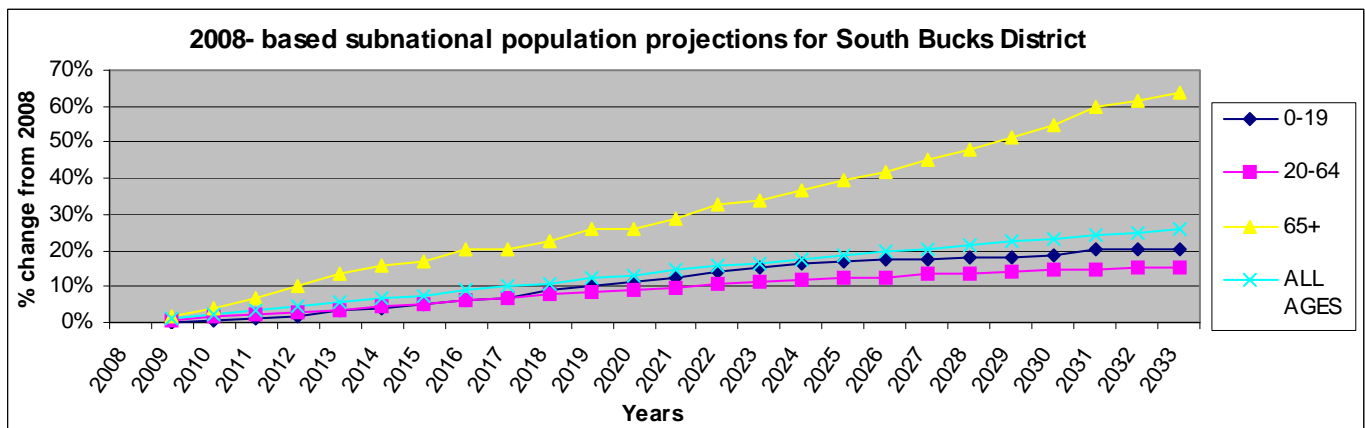
### Population Projections

Source: 2008-based sub national population projections, Office for National Statistics/Bucks Strategic Partnership (BSP) population projections October 2010

National population projections are not available at ward level but based on the latest national population projections South Bucks District is predicted to have a population increase of 25.9% over the next 25 years from 65,700 to 82,700. The projections are trend based which means assumptions for future levels of births, deaths and migration are based on observed levels (they do not take into account any future policy changes that have not yet occurred). Within these figures based on projections for the district from 2008 to 2033:

- the 0-19 age group is predicted to rise by 20.1% (England 10.4%);
- the 20-64 age group by 15.5% (England 8.3%); and
- the 65+ age group by 63.9% (England 65.3%).

Local population projections at district and ward level (commissioned by Bucks CC) have been produced which take account of additional datasets including housing provision in the area and other local inputs. These put the population at 67,550 in 2026 (a difference of over 11,000 from the national projections). The significant differences between the projections means caution needs to be applied when using these figures (further information about both sets of projections can be found on KnowledgeSource).



## Population Density

Source: Table UV02, ONS, Census 2001

The number of persons per hectare in Wexham & Iver West based on the 2001 Census information was 2.29, this is lower than the average of 4.38 for South Bucks and 3.45 for England and Wales.

## Ethnicity

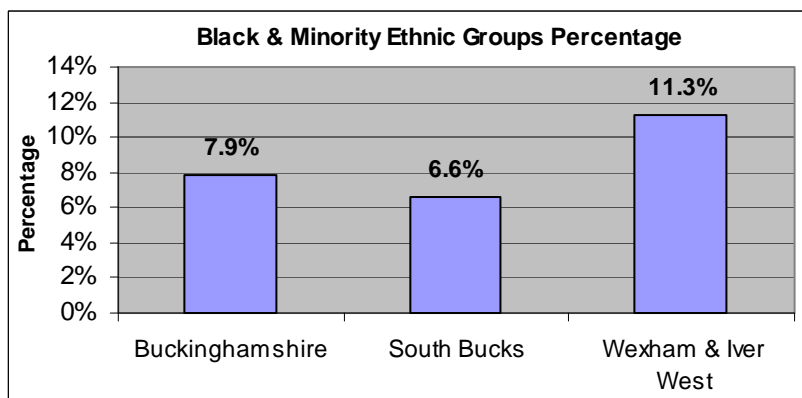
Source: Table KS06 & UV08, Census 2001/ Nomisweb standard tables, ONS.

Resident Population Estimates by Ethnic Group (experimental), 2009, Office for National Statistics.

Based on 2001 Census information 83.0% of the population of Wexham & Iver West Ward stated their ethnicity as White British; this is lower than the 86.5% average for South Bucks. 4.5% of the population of the Ward declare their ethnicity as Other-White, lower than the 5.1% average for South Bucks.

There are 11.3% of the population who are from Black & Minority Ethnic (BME) Groups this is higher than the 6.6% average for South Bucks. This is split down into the following BME Groups.

BME mix	Percentage
Mixed	1.0%
Asian or Asian British	7.0%
Black or Black British	0.8%
Chinese or other ethnic group	2.5%



The BME groups tend to be higher in the younger age group as the split below shows:

- For the 0-19 age group 20.6% of the population are from BME Groups (10.2% South Bucks average), this is the highest percentage for this age group compared to the other wards in the District
- For the 20-64 age group 10.1% of the population are from BME groups (6.7% South Bucks average)
- For the 65 and over age group 2.2% of the population are from BME groups (1.5% South Bucks average)

Looking at the change from the 1991 to 2001 Census for South Bucks District, 3.3% identified with one of the non-white ethnic categories in 1991 compared to 6.6% in 2001, an increase of 3.3%. Based on experimental population estimates for 2009 13.1% of the population in South Bucks were from a non-white ethnic group.

14.3% of the population of Wexham & Iver West were born outside of the UK which is higher than the District average of 12.2%. The Ward population born outside the UK are predominantly from Asia (6.5%), other Western European countries (2.3%) and Africa (1.6%).

## Religion

Source: Table KS07, ONS, Census 2001

Based on 2001 Census information 72.1% of the population of Wexham & Iver West Ward stated their religion as Christianity; this is lower than the 75.6% average for South Bucks. 4.4% stated their religion as Sikh which is the highest percentage compared to the other wards in the District.

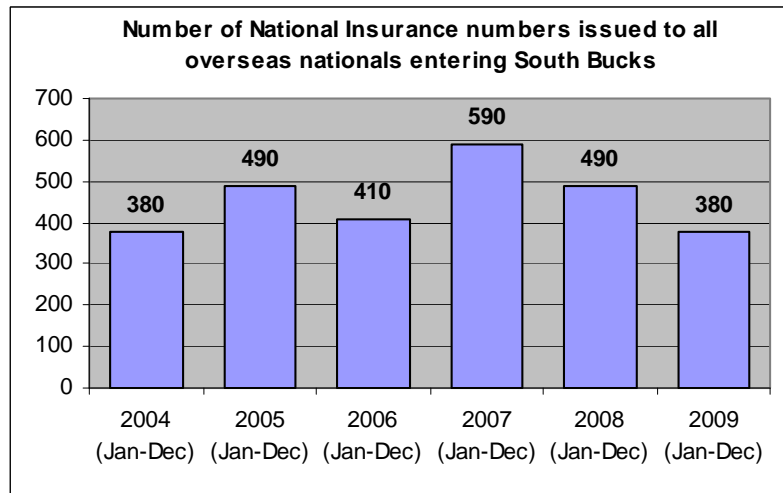
People stating religion as:	Wexham & Iver West	South Bucks	England and Wales
Christian	72.1%	75.6%	71.8%
Buddhist	0.5%	0.3%	0.3%
Hindu	1.6%	1.2%	1.1%
Jewish	0.4%	0.5%	0.5%
Muslim	0.9%	1.1%	3.0%
Sikh	4.4%	1.6%	0.6%
Other religions	0.3%	0.3%	0.3%
No religion	12.6%	12.5%	14.8%
Religion not stated	7.2%	6.9%	7.7%

## Migrant Workers

Source: DWP 2009, Local Area Migration Indicators table from Office of National Statistics

Overseas nationals obtain a National Insurance (NI) Number before they enter into employment or upon starting work, so registrations data can be a good indication of new arrivals who are economically active. (Some foreign nationals do obtain a NI number but do not take up employment e.g. refugees will need an NI number but will not all be economically active.)

These figures are only available at district level and do not go down to ward level.



The top 6 nationalities for overseas nationals who are issued a National Insurance number entering South Bucks in 2009 were Poland, India, South Africa, USA, Australia and Germany.

## Environment

### Land Use Statistics

Source: Generalised Land Use Database Statistics 2005, Communities and Local Government (last updated Jan-07)

The following data is taken from experimental statistics from January 2005 from the generalised land use database. The total area of all land types for Wexham & Iver West is 1357 hectares which makes up 9.6% of the land in the District. The main type of land use is greenspace and makes up 86.1% of the land use for the Ward. Communities and Local Government consider the 2005 figures to be the definitive land use statistics. No further work is planned on the Generalised Land Use Database.

Type of land use	Hectares	% of ward area that land use type makes up	% of district that land use type makes up
Area of Domestic Buildings	11.7	0.9%	1.7%
Area of Non Domestic Buildings	6.5	0.5%	0.8%
Area of Road	32.2	2.4%	4.2%
Area of Path	2.1	0.2%	0.2%
Area of Rail	0.0	0.0%	0.2%
Area of Domestic Gardens	83.8	6.2%	11.2%
Area of Greenspace	1167.7	86.1%	77.5%
Area of Water	22.6	1.7%	2.0%
Area of Other Land Uses	30.1	2.2%	2.2%
Area of Unclassified Land	0	0.0%	0.0%

Based on figures from the Council's 2009/10 Annual Monitoring Report:

For Wexham Parish there were:

- 636.2 hectares of land designated as Area of Attractive Landscape (designation by Bucks CC)
- 0 conservation areas within Wexham Parish and 35 listed buildings

For Iver Parish there were:

- 1 conservation areas within Iver Parish and 41 listed buildings

## Housing

### Household Tenure

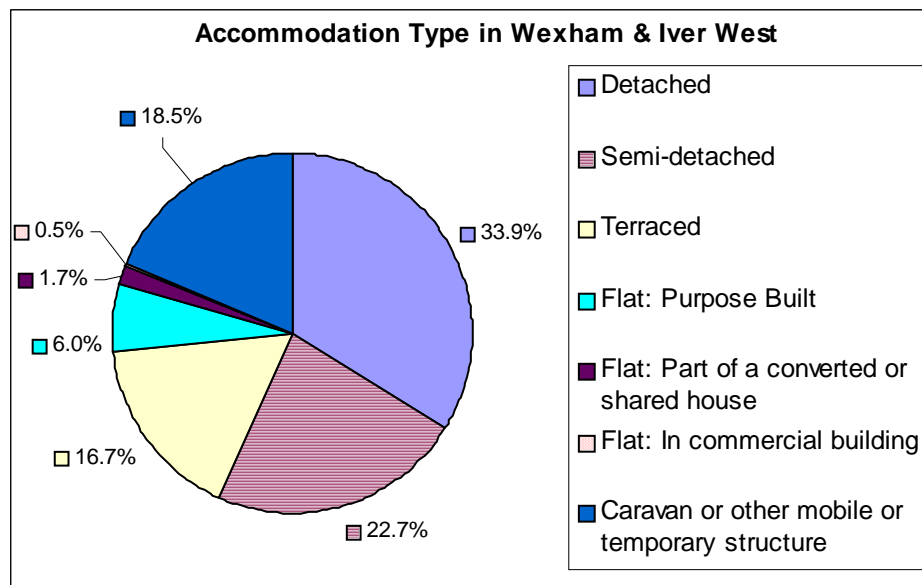
Source: Table KS18, ONS, Census 2001

Within Wexham & Iver West there was 82.3% of owner occupied housing which is 4.3% higher than the District average and 13.4% higher than the England & Wales average. 38.5% of this owner occupied housing was owned outright.

Household Tenure	Wexham & Iver West	South Bucks	England & Wales
Owner Occupied	82.3%	78.0%	68.9%
Social Rented: Council/ Housing Association/ Registered Social Landlord	9.0%	12.6%	19.2%
Private Rented: Private landlord or letting agency	4.8%	6.1%	8.7%
Other	3.9%	3.3%	3.2%

### Accommodation Type

Source: Table KS16, ONS, Census 2001



Based on the 2001 Census there were 1321 households in Wexham & Iver West, 94.3% of these were lived in and 5.7% were either vacant or used as a second residence or holiday accommodation.

18.5% of the accommodation type within Wexham & Iver West was made up of caravan or other mobile or temporary structure, this is 16.9% higher than the District average of 1.6%. Detached housing within the Ward was 9% lower than the District average.

### Household Composition

Source: Table KS20, ONS, Census 2001

The table below shows the household composition in 2001 for Wexham & Iver West compared to the average for the District. The main difference to the District average is there is a higher percentage of single non-pensionable households (4.5 higher) and a lower percentage of married couple households within children (3.9% lower).

⇒ There were 34 lone parent households with dependent children.

Household Composition	Wexham & Iver West (Number)	Wexham & Iver West (%)	South Bucks District average (%)	Difference
Single non-pensionable households	202	16.2%	11.7%	4.5%
Single pensioner	154	12.4%	14.3%	-1.9%
All other pensioner households	132	10.6%	11.9%	-1.3%
Married couple households: No children	191	15.3%	14.9%	0.5%
Married couple households: With children	308	24.7%	28.6%	-3.9%
Cohabiting couple households: No children	65	5.2%	4.1%	1.1%
Cohabiting couple households: With children	36	2.9%	2.6%	0.2%
Lone parent households: With dependent children	34	2.7%	3.3%	-0.6%
Lone parent households: All children non-dependent	37	3.0%	2.8%	0.1%
Student households	0	0.0%	0.0%	0.0%
Other households: With dependent children	39	3.1%	2.3%	0.9%
Other households: Other	47	3.8%	3.3%	0.4%

## Council Tax Banding

Source: Valuation list for the authority on 4th Oct 2010

Council tax information can provide an overview of house value within an area, however whilst they provide an overview it should be noted that these bandings were created several years ago. This information is only available at a parish level rather than by ward. The percentage of houses falling in the A-C bands (the lower council tax bands) for Wexham Parish is 17.8% higher than the District average and Iver Parish is 2.7% higher than the District average.

Parish	Dwelling Count	Bands A-C	Bands D-F	Bands G-H
Wexham	988	35.4%	48.6%	16.0%
Iver	4430	20.3%	62.6%	17.1%
South Bucks District	27,628	17.6%	50.8%	31.6%

## House prices

Source: DCLG tables from Land Registry data—2010

The average house price in 2010 in South Bucks based on house sales was £536k over 47% higher than the average for Buckinghamshire. The average for Chiltern was £457,202, Wycombe was £338,294 and Aylesbury Vale was £273,022.

## Acorn Data

Source: Acorn Data 2010, produced by CACI

Acorn Data provides useful data about the characteristics of people based on the postcode in which they live. Using data from a range of sources, every postcode is classified into one of 5 categories, which split down into further groups. This data provides useful information to start to understand the feelings, behaviours and expectations of each group. N.B All category names are already defined on the database.

Area	Wealthy Achievers	Urban Prosperity	Comfortably Off	Moderate Means	Hard Pressed	No Classification
Wexham and Iver West	58.3%	4.3%	28.7%	3.5%	3.5%	1.7%
South Bucks	60.3%	10.9%	21.6%	2.1%	3.8%	1.3%

Looking at the five main categories it shows that Wexham & Iver West has a higher percentage of households falling in the 'Comfortable Off' category than the District average by 7.1%. The tables below provide a detailed split down into smaller groupings which provide an idea of the type of households within each category.

Category 1 - Wealthy Achievers	Ward %	District %
Wealthy Mature Professionals	7.8%	24.2%
Villages with Wealthy Commuters	2.6%	14.4%
Well Off Managers	18.3%	4.8%
Affluent Greys	13.0%	6.7%
Flourishing Families	16.5%	10.3%

Category 2 - Urban Prosperity	Ward %	District %
Urban Professionals	4.3%	10.9%

Category 3 - Comfortably Off	Ward %	District %
Secure Families	22.6%	13.3%
Settled Suburbia/Prudent Pensioners	6.1%	8.4%

Category 4 - Moderate Means	Ward %	District %
Moderate Means	3.5%	2.1%

Category 5 - Urban Prosperity	Ward %	District %
Hard Pressed	3.5%	3.8%

Unclassified	Ward %	District %
Unclassified	1.7%	1.3%

The main type of grouping within this Ward are 'Secure Families' which accounts for 22.6% which is 13.3% higher than the District average. Education is important to this group, who have more very young children than average. Households are not economically deprived, or well off, but have fairly average incomes. People's health is generally good, but a slightly larger proportion than average make poor lifestyle choices.

## Employment & Education

### Economically active

Source: CAS028, ONS, Census 2001

Based on information from the 2001 Census 78.8% of the working age population within the Ward are economically active, this is slightly higher than the average for the District. The female and male breakdown shows that there is 71.2% of the female working age population who are economically active within Wexham & Iver West which is 2.6% higher than the District average of 68.6%.

	Wexham & Iver West	South Bucks	Great Britain
<b>Economically active (% of working age population)</b>			
All People	78.8%	77.9%	74.0%
Males	86.9%	87.7%	81.4%
Females	71.2%	68.6%	66.8%
<b>Unemployed (% of economically active)</b>			
All People	3.2%	3.0%	5.7%

3.2% of the economically active population are unemployed in Wexham & Iver West which is slightly higher than the District average.

Based on latest estimates the economically active rate for South Bucks is 76.5% and the rate for Great Britain is 76.2% (source: Annual Population Survey Jan - Dec 2010).

### Hours worked

Source: CAS029, ONS, Census 2001

The table opposite shows that 79.9% of the people in employment within the Ward work full-time hours and 20.1% work part-time hours. Looking at the split down by sex, 91.6% of males worked full time and 8.4% worked part time and 66.3% of females worked full time and 33.7% worked part time.

	Wexham & Iver West	South Bucks	Great Britain
<b>Hours worked - for all people in employment</b>			
Full time	79.9%	77.4%	75.9%
Part time	20.1%	22.6%	24.1%

### Employment by Occupation

Source: CAS033, ONS, Census 2001

For the population of Wexham & Iver West the top 3 occupation groups are:

- Managers and Senior Officials who make up 22.6% (South Bucks Average 25.8%)
- Associate Professional and Technical who make up 15.0% (South Bucks Average 15.4%)
- Administrative & Secretarial who make up 14.0% (South Bucks Average 14.0%)

These 3 occupation groups contribute just over 51% of occupations for the Ward.

### Jobseeker's Allowance (JSA) Claimants

Source: ONS claimant count with rates and proportions, Nomisweb (June 2011)

Within Wexham & Iver West Ward there were 31 people claiming Job Seekers Allowance based on a quarterly snapshot from June 2011. This accounts for 1.5% of the working age population which is slightly higher than the South Bucks average of 1.3% and higher than the Great Britain average of 3.7%.

### Education

Source: CAS032, ONS, Census 2001

Within Wexham & Iver West 19.9% of people aged 16 to 74 have higher level qualifications which is 8.7% lower than the average for South Bucks. 33.3% have no qualifications which is 6.6% higher than the South Bucks average but 2.5% lower than the Great Britain average.

	Wexham & Iver West (numbers)	Wexham & Iver West %	South Bucks %	Great Britain %
No qualifications or level unknown <sup>1</sup>	772	33.3%	26.7%	35.8%
Lower level qualifications <sup>2</sup>	1086	46.8%	44.6%	43.9%
Higher level qualifications <sup>3</sup>	462	19.9%	28.6%	20.4%

<sup>1</sup> People without any academic, vocational or professional qualification or level unknown

<sup>2</sup> Qualifications equivalent to Level 1 to 3 of the National Key Learning Targets (i.e. GCSE's, O-Levels, A-Levels, NVQ Level 1-3)

<sup>3</sup> Qualifications of Level 4 & above (i.e. first/higher degrees, NVQ Level 4 & 5, HND, HNC & other professional qualifications)

## Travel

### Distance Travelled to Work

Source: Table UV35, ONS, Census 2001

The table below shows the distance travelled to work for all people aged 16 to 74 who were in employment based on information collected in the 2001 Census.

	Wexham & Iver West	South Bucks	South East	England & Wales
Works mainly at or from home	11.9%	13.1%	9.9%	9.2%
Less than 2km	11.0%	12.2%	20.4%	20.0%
2km to less than 5km	20.9%	15.3%	17.6%	20.0%
5km to less than 10km	21.5%	19.5%	15.2%	18.2%
10km to less than 20km	15.4%	16.4%	13.7%	15.2%
20km to less than 40km	11.2%	14.9%	10.3%	7.7%
40km and over	2.3%	3.3%	7.5%	4.9%
No fixed place of work	5.7%	4.9%	5.1%	4.4%
Other	0.2%	0.4%	0.3%	0.3%

Within Wexham & Iver West there are 11.9% of people who work mainly at or from home which is 1.2% lower than the District average. 53.4% of people are travelling less than 10km to work which is 6.4% higher than the average for the District.

### Method of Travel to Work

Source: Table UV39, ONS, Census 2001

The table below shows the method of travel to work for the usual resident population aged 16 to 74 who were in work based on information collected in the 2001 Census.

	Wexham & Iver West	South Bucks	South East	England & Wales
Driving a car or van	67.6%	65.0%	59.2%	55.2%
On foot	3.9%	5.9%	9.9%	10.0%
Works mainly at or from home	11.9%	13.1%	9.9%	9.2%
Bus, minibus or coach	1.7%	1.5%	4.4%	7.4%
Passenger in a car or van	6.3%	4.3%	5.7%	6.3%
Train	3.3%	5.8%	5.6%	4.1%
Underground, metro, light rail or tram	1.3%	1.3%	0.2%	3.0%
Bicycle	1.6%	1.5%	3.1%	2.8%
Motorcycle, scooter or moped	1.3%	0.8%	1.1%	1.1%
Other	1.1%	0.8%	0.9%	1.0%

Within Wexham & Iver West 6.3% of the populations' method of travel to work is as a passenger in a car of a van which is 2% higher than the District average. The percentage of people working mainly at or from home is lower than the District average and 3.9% of people are travelling to work on foot which is 2% lower than the average for the District.

### Car and Van Ownership

Source: Table UV62, ONS, Census 2001

The table below shows that in 2001 that 8.2% of households in Wexham & Iver West did not own a car or van which was 2.9% lower than the District average.

	Wexham & Iver West	South Bucks	South East	England & Wales
No car or van	8.2%	11.1%	19.4%	26.8%
1 car or van	40.1%	36.0%	42.6%	43.8%
2 cars or vans	36.8%	38.9%	29.6%	23.5%
3 or more cars or vans	14.8%	14.0%	8.4%	5.9%

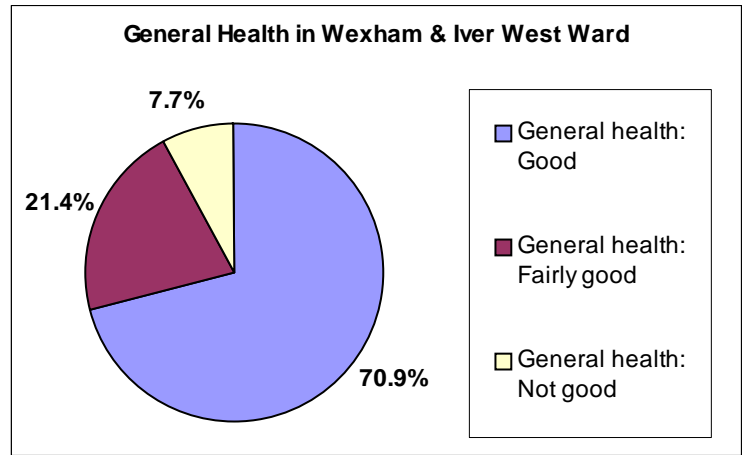
## Health

### General Health & Limiting Long-term Illness

Source: Table KS08, ONS, Census 2001

70.9% of people within Wexham & Iver West declare themselves as having good health, this is 4.4% lower than the average for South Bucks. The Ward percentage is 2.3% higher than the England and Wales average of 68.6% who declared they had good health.

People declaring themselves as having not good general health in the Ward is higher than the average for the District but lower than the average for England and Wales.



In 2001 there was an estimated 14.9% of the population of Wexham & Iver West who had a limiting long-term illness which equates to 462 people, this percentage is higher than the average for South Bucks of 13.1% and lower than the average for England and Wales which is 18.2%.

### Provision of Unpaid Care

Source: Table KS08, ONS, Census 2001

Within the Wexham & Iver West Ward 10.4% of the population provide some form of unpaid care, this equates to 323 people. The split down of this is as follows:

- 76.2% (246 people) were providing 1-19 hours unpaid care a week
- 9.3% (30 people) were providing 20-49 hours unpaid care a week
- 14.6% (47 people) were providing 50 or more hours unpaid care a week

### Disability Living Allowance Claimants

Source: Department of Work and Pensions, August 2010

Disability Living Allowance is payable to people who are disabled and who have personal care needs, mobility needs or both. It consists of two components, the care component for people who need help with personal care and the mobility component for people who need help with getting around.

Within Wexham & Iver West Ward there were 110 people claiming Disability Living Allowance based on figures from August 2010 which accounted for about 6.6% of the total claimants for South Bucks. The age breakdown of claimants is shown in the table opposite. 45 of the claimants were male and 65 were female.

Of the people claiming disability living allowance:

- 10 had a claim duration for less than 12 months,
- 5 had a claim duration for between 1 & 2 years,
- 25 had a claim duration which was between 2 & 5 years
- 70 had a claim duration which was 5 years and over

Claimants Age	Count of Claimants
Claimants Aged Under 16	20
Claimants Aged 16-24	0
Claimants Aged 25-49	20
Claimants Aged 50-59	20
Claimants Aged 60-69	25
Claimants Aged 70 and Over	25

Incapacity Benefit/Severe Disablement Allowance is a benefit provided to people due to them being incapable of work through illness or disability. This includes Sickness/Invalidity Benefit and Severe Disablement and Incapacity Benefit. Within the Wexham & Iver Ward there were 45 people claiming this type of benefit, 45 of which were Incapacity Benefit Claimants and 0 of which were severe Disablement Allowance Claimants.

*Data has been rounded to base 5 for all figures in order to protect small counts.*

## Deprivation

Source: *Indices of Multiple Deprivation 2010, CLG.*

The Indices of Multiple Deprivation 2010 (IMD 2010) is a measure of deprivation at the small area level—Lower Super Output Area (LSOA). England is split into 32,482 LSOAs, LSOAs have a minimum population of 1000, and overall average population of 1500, and were ranked to create the IMD. All of the LSOAs in England are ranked, the LSOA ranked 1 by the IMD 2010 is the most deprived and the LSOA ranked 32,482 is the least deprived.

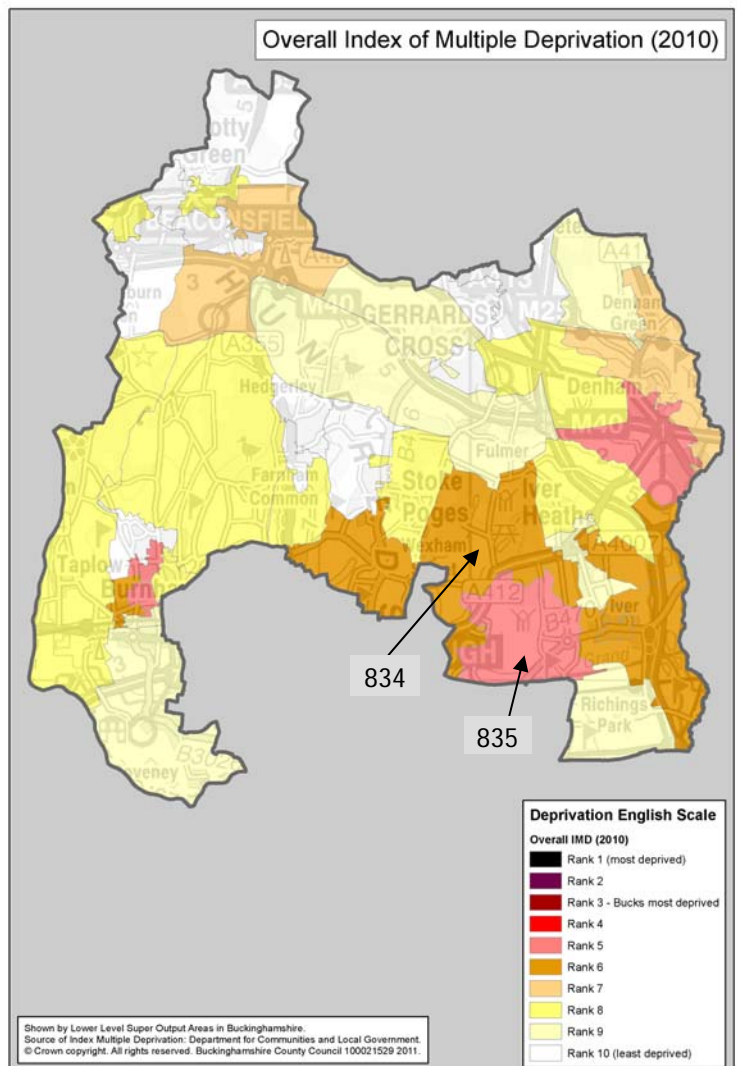
- Wexham & Iver West Ward is made up of 2 LSOAs (834 & 835 –locations shown on the map).

The IMD model is based on 7 distinct dimensions of deprivation which are then given a weighting to work out an overall ranking for deprivation as the table below shows.

Domain	Weighting
Income Deprivation	22.5%
Employment Deprivation	22.5%
Health Deprivation & Disability	13.5%
Education, Skills & Training Deprivation	13.5%
Barriers to Housing and Services	9.3%
Crime & Disorder	9.3%
Living Environment Deprivation	9.3%

### The different domains

- Income Deprivation covers a range of indicators including adults and children in Income Support/ Income-Based JSA/ Pension Credit/ certain child tax credit families and Asylum seekers receiving subsistence/accommodation support.
- Employment Deprivation measures involuntary exclusion of working age population from the labour market. This includes indicators on recipients of Jobseekers Allowance, Incapacity Benefits, Severe Disablement Allowance, claimants of employment and support allowance, participants in the New Deal for under 25s, over 25s and new parents.
- Health Deprivation and Disability domain measures rates of poor health, early mortality and disability in an area and covers the entire age range, it includes indicators on years of potential life lost, comparative illness and disability ratio, proportion of adults under 60 suffering from mood or anxiety disorders and measures of acute morbidity.
- Education Skills and Training Deprivation covers two sub-domains: one relating to education deprivation for children/young people in the area, and one relating to lack of skills and qualifications among a sub-set of the working age population.
- Barriers to Housing and Services domain splits into two sub-domains: geographical barriers which looks at road distance to a GP surgery/general stores or supermarket/primary school and to a Post office; wider barriers includes issues relating to access to housing such as affordability and household overcrowding.
- Crime domain measures the rate of recorded crime for four major crime types, representing the risk of personal and material victimisation at a small area level. These include Burglary, Theft, Criminal Damage and Violence.
- Living environment deprivation comprises two sub-domains: the 'indoors' which measures the quality of housing (housing in poor condition and without central heating), and the 'outdoors' which contains two measures about air quality and road traffic accidents.



For the overall level of deprivation for Wexham & Iwer West, one of the LSOAs (834) falls in the least deprived 46% in England and the other LSOA (835) falls just outside the lower half of all LSOAs in England and is ranked 2 out of 40 when compared to the other areas in the District.

For each LSOA within Wexham & Iwer West the table below shows the rank out all the LSOAs in England, the deprivation percentage and the rank compared to the other LSOAs in the District for each domain.

Domain	LSOA	Rank out of 32,482 LSOAs in England 1 most deprived / 32,482 least deprived	Deprivation % 0 = most deprived 100 = least deprived	Rank out of LSOAs in District 1 = lowest rank 40= highest rank
Overall Deprivation	834	17,862	54.99%	6/40
	835	15,878	48.88%	2/40
Income Deprivation	834	25,988	80.01%	20/40
	835	15,215	46.84%	4/40
Employment Deprivation	834	31,170	95.96%	28/40
	835	20,814	64.08%	4/40
Health Deprivation & Disability	834	29,400	90.51%	15/40
	835	25,648	78.96%	4/40
Education, Skills & Training Deprivation	834	19,797	60.95%	11/40
	835	19,740	60.8%	10/40
Barriers to Housing & Services	834	3,328	10.25%	3/40
	835	2,600	8.00%	1/40
Crime & Disorder	834	600	1.85%	1/40
	835	5,476	16.86%	12/40
Living Environment Deprivation	834	29,643	91.26%	37/40
	835	25,164	77.47%	27/40

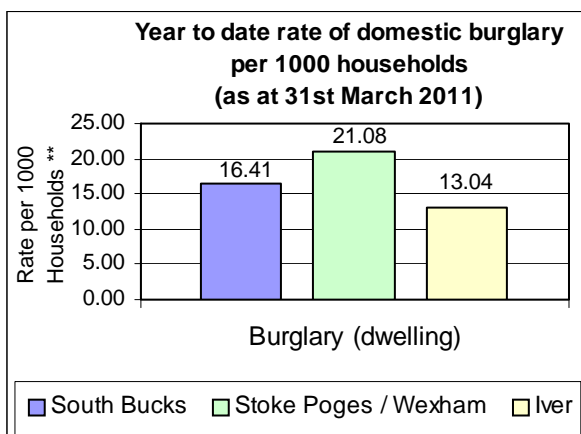
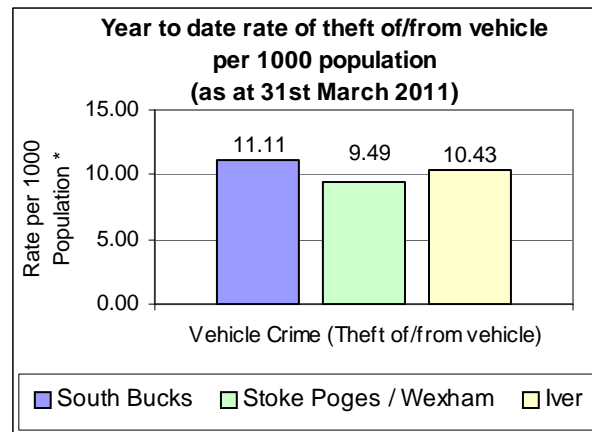
- For Income Deprivation there is clearly a difference between the LSOAs in Wexham & Iwer West with one of the LSOAs (834) falling in the least deprived 20% in England for Income Deprivation, the other LSOA (835) falls within the lower half of all LSOAs in England and ranks 4 out of 40 when compared to other LSOAs in the District. Based on the scoring used to work out this ranking we can say that 12% of people are income deprived in LSOA 835, and looking at a further breakdown for children aged 0-15 there is 23% living in income deprived households and for older people aged 60 and over there is 15% living in income deprived households.
- For Employment Deprivation LSOA 834 falls in the least deprived 5% in England and LSOA 835 falls in the least deprived 36% in England. For Health Deprivation & Disability both LSOAs within Wexham & Iwer West fall within the least deprived 22% in England.
- Barriers to Housing & Services is high for the Ward with both LSOAs falling within the most deprived 11% in England with LSOA 834 ranking 3 out of 40 compared to the other LSOAs in the District and LSOA 835 ranking 1 out of 40, meaning that it is the most deprived for this type of deprivation compared to the other LSOAs in the District.
- For Crime & Disorder both LSOAs fall in the most deprived 20% of all LSOAs in England. LSOA 835 falls in the most deprived 17% in England and SOA 834 falls in the most deprived 2% in England and ranks 1 out 40 when compared to the other LSOAs in the District.
- For the Living Environment Deprivation SOA 834 falls in the least deprived 9% in England and LSOA 835 falls in the least deprived 23% in England.

## Crime

Source: Thames Valley Police Crime Summary for South Bucks District as at 31st March 2011

Information on crime levels is produced at the Police Neighbourhood level rather than by Ward. The information is based on year to date crime summaries produced by Thames Valley Police for the District. Due to the neighbourhood group split this page includes information on the parishes of Gerrards Cross, Hedgerley, Fulmer and Denham.

The graph opposite shows that for the Stoke Poges/Wexham & Iver police neighbourhood area the rate of theft of or from a vehicle per 1,000 population is lower for both neighbourhoods than the District average. Vehicle crime has seen a decrease of 43.8% from 112 in 2009/10 to 63 in 2010/11 for Stoke Poges/Wexham and a decrease of 21.2% from 146 in 2009/10 to 115 in 2010/11.



The rate of domestic burglary per 1,000 households for the Stoke Poges/Wexham area is higher than the District average and the Iver police neighbourhood area is lower than the District average. Burglary has seen an increase for Stoke Poges/Wexham from 26 in 2009/10 to 59 incidents in 2010/11 but for Iver has seen a decrease from 96 incidents in 2009/10 to 54 in 2010/11.

\* Population figures to work out the rates per 1000 population are based on the Civil Parish population estimates in South Bucks, mid-2009. \*\* Household figures to work out the rates per 1000 households are based on the 2001 census data for Parishes and includes new housing completions per parish from 2001-2011. Data inaccuracy may occur due to boundary variations.

The table below shows the number of offences over the last three years for the Stoke Poges/Wexham and Iver police neighbourhood area and the District:

		South Bucks									
		2008/2009	2009/2010	% change	2010/2011	% change	2008/2009	2009/2010	% change	2010/2011	% change
Stoke Poges/Wexham	Vehicle Crime Theft of/from vehicle)	106	112	5.7%	63	-43.8%	1125	1003	-10.8%	740	-26.2%
	Burglary (Dwelling)	61	26	-57.4%	59	126.9%	601	511	-15.0%	432	-15.5%
	All Crime	473	447	-5.5%	363	-18.8%	6323	5809	-8.1%	4843	-16.6%
Iver	Vehicle Crime Theft of/from vehicle)	222	146	-34.2%	115	-21.2%					
	Burglary (Dwelling)	112	96	-14.3%	54	-43.8%					
	All Crime	1015	900	-11.3%	714	-20.7%					

Crime statistics for the District are produced by Thames Valley Police on a monthly basis and should be used for up to date trend information. There are some differences between the neighbourhood police area figures and the overall South Bucks figures due to different timelines in producing the report and crimes that are reclassified over the reporting period.

When using this Ward Profile please note that information is taken from a variety of sources and SBDC can not vouch for its accuracy & reliability. Many statistics come from the 2001 Census so this should be taken into account when utilising these figures as these are now 10 years old.

Some of the data contained in this profile is protected by various copyrights and cannot be re-used elsewhere without permission of the relevant copyright holder (please refer to source data for more information).